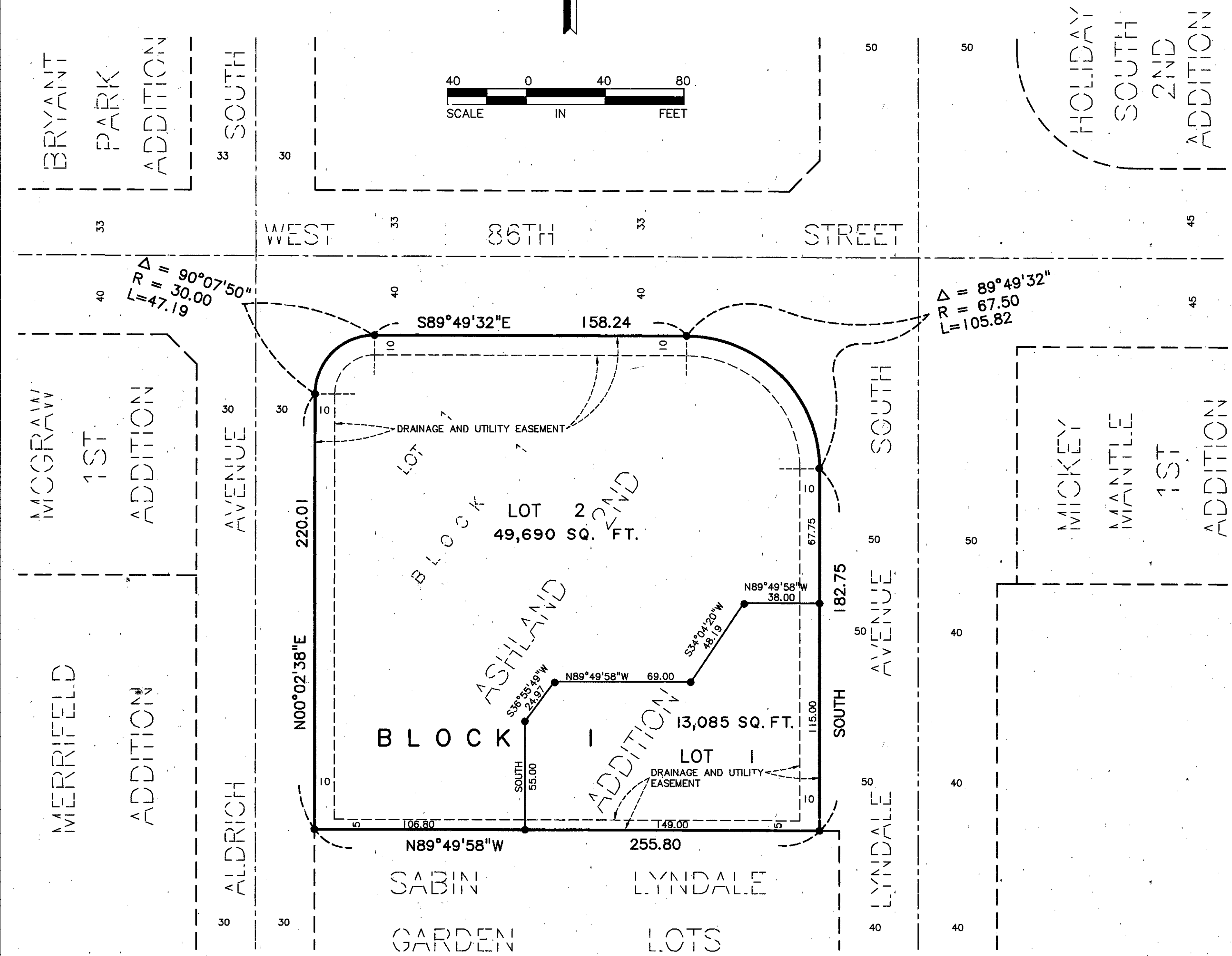
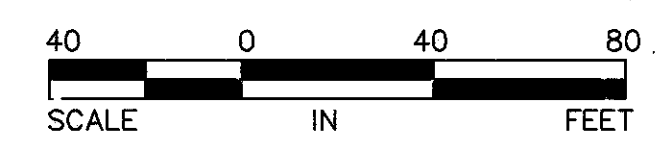


# SUPERAMERICA 4TH ADDITION



● DENOTES IRON MONUMENT SET AND MARKED BY R.L.S. NO. 8612

BEARINGS SHOWN ARE ASSUMED

KNOW ALL MEN BY THESE PRESENTS: That ASHLAND INC., A Kentucky Corporation, owner and proprietor of the following described property situated in the County of Hennepin, State of Minnesota, to wit:

Lot 1, Block 1, ASHLAND 2ND ADDITION, according to the recorded plat thereof.

Has caused the same to be surveyed and platted as SUPERAMERICA 4TH ADDITION and do hereby donate and dedicate to the public for public use forever the drainage and utility easements as shown on said plat.

In witness whereof said ASHLAND INC., a Kentucky Corporation, has caused these presents to be signed by its proper officer this 31<sup>st</sup> day of March, 1998.

ASHLAND INC., a Kentucky Corporation

SIGNED: William R. Sawran its Vice President

STATE OF ~~MINNESOTA~~ Kentucky  
COUNTY OF ~~Fayette~~

The foregoing instrument was acknowledged before me, this 31<sup>st</sup> day of March, 1998 by William R. Sawran its Vice President of ASHLAND INC., a Kentucky Corporation, on behalf of said corporation.

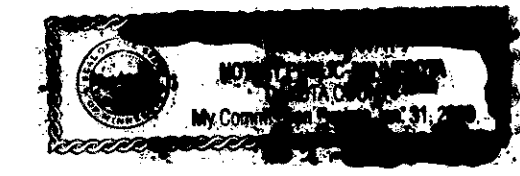
Allen J. Mitchell  
Notary Public, Fayette County, Kentucky  
My Commission Expires December 31st, 2000  
May 15, 2001

I hereby certify that I have surveyed and platted the property described on this plat as SUPERAMERICA 4TH ADDITION; that this plat is a correct representation of said survey; that all distances are correctly shown on said plat in feet and hundredths of a foot; that all monuments have been correctly placed in the ground as shown on said plat; that the outside boundary lines are correctly designated on the plat; and that there are no wetlands as defined in Minnesota Statutes, Section 505.02, Subdivision 1 to be designated on said plat other than as shown.

Edward H. Sunde  
Edward H. Sunde, Land Surveyor  
Minnesota License No. 8612

STATE OF MINNESOTA  
COUNTY OF Hennepin

The foregoing Surveyor's Certificate was acknowledged before me this 3<sup>rd</sup> day of February, 1998 by Edward H. Sunde, Land Surveyor.



Marie J. West  
Notary Public, Dakota County, Minnesota  
My Commission Expires December 31st, 2000.

BLOOMINGTON, MINNESOTA

This plat of SUPERAMERICA 4TH ADDITION was approved and accepted by the City Council of the City of Bloomington, Minnesota, at a regular meeting thereof, held this \_\_\_\_\_ day of \_\_\_\_\_, 199\_\_\_\_. If applicable, the written comments and recommendations of the Commissioner of Transportation and the County Highway Engineer have been received by the City or the prescribed 30 day period has elapsed without receipt of such comments and recommendations, as provided by Minnesota Statutes, Section 505.03, Subdivision 2.

CITY COUNCIL OF BLOOMINGTON, MINNESOTA

BY: \_\_\_\_\_ Mayor BY: \_\_\_\_\_ Manager

TAXPAYER SERVICES DIVISION, Hennepin County, Minnesota

I hereby certify that the taxes payable in 199\_\_\_\_ and prior years have been paid for the land described on this plat. Dated this \_\_\_\_\_ day of \_\_\_\_\_, 199\_\_\_\_

Patrick H. O'Connor, Hennepin County Auditor BY: \_\_\_\_\_ Deputy

SURVEY SECTION, Hennepin County, Minnesota

Pursuant to MINNESOTA STATUTES, Sec. 383B.565 (1969), this plat has been approved this \_\_\_\_\_ day of \_\_\_\_\_, 199\_\_\_\_

Gary F. Caswell, Hennepin County Surveyor BY: \_\_\_\_\_

COUNTY RECORDER, Hennepin County, Minnesota

I hereby certify that the within plat of SUPERAMERICA 4TH ADDITION was filed for record in this office this \_\_\_\_\_ day of \_\_\_\_\_, 199\_\_\_\_ at \_\_\_\_\_ o'clock \_\_\_\_\_M.

R. Dan Carlson, County Recorder BY: \_\_\_\_\_ Deputy

**Sunde Land Surveying Inc.**