

# STROMS ADDITION

KNOW ALL MEN BY THESE PRESENTS: That Mary Moppets Day Care Schools Inc., a Delaware corporation, owner and proprietor of the following described property situated in the County of Hennepin, State of Minnesota, to wit:

That part of Lot 16, Block 10, Oxboro Heath lying East of the West 204.5 feet thereof, on file and of record in the office of the County Recorder in said Hennepin County.

Has caused the same to be surveyed and platted as STROMS ADDITION, and does hereby donate and dedicate to the public for public use forever the Utility and Drainage easements and Avenue as shown on the plat.

In witness whereof said Mary Moppets Day Care Schools Inc., a Delaware corporation, has caused these presents to be signed by its proper officers this 4th day of August, A.D. 1981.

Signed  
by Gerald J. Spresser its president  
Gerald J. Spresser  
by William M. Spresser its vice president  
William M. Spresser

STATE OF ARIZONA  
COUNTY OF MARICOPA

The foregoing instrument was acknowledged before me this 4th day of August, A.D. 1981, by Gerald J. Spresser, president and William M. Spresser, vice president, of Mary Moppets Day Care Schools Inc., a Delaware corporation, on behalf of the corporation

Jeanne Outman Hall  
Notary Public, Maricopa County, Arizona  
My Commission Expires March 25, 1984

I hereby certify that I have surveyed and platted the property described on this plat as STROMS ADDITION; that the plat is a correct representation of the survey; that all distances are correctly shown in feet and hundredths of a foot; that all monuments have been correctly placed in the ground and that the outside boundary lines are correctly designated on the plat and that there are no wet lands or public highways to be designated on said plat.

F. C. Jackson  
F.C. Jackson, Land Surveyor, Minn. Licence No. 3600

STATE OF MINNESOTA  
COUNTY OF HENNEPIN

The following instrument was acknowledged before me this 3rd day of August, A.D. 1981, by F.C. Jackson, Land Surveyor.

Anton R. Hawkins  
Notary Public, Hennepin County, Minnesota  
My Commission Expires  
OCT. 16, 1986

CITY OF BLOOMINGTON, MINNESOTA  
This plat of STROMS ADDITION was approved and accepted by the City Council of the City of Bloomington, Minnesota, at a regular meeting thereof held this day of A.D. 1981.

City Council of Bloomington, Minnesota  
by \_\_\_\_\_ Mayor by \_\_\_\_\_ Manager

PROPERTY TAXATION DEPT., Hennepin County, Minnesota.

I hereby certify that there are no delinquent taxes for all years prior to for the land described in this plat Dated this day of A.D. 1981.

Vernon T. Hoppe, director, by \_\_\_\_\_ Tax Clerk

COUNTY SURVEYOR, Hennepin County, Minnesota.

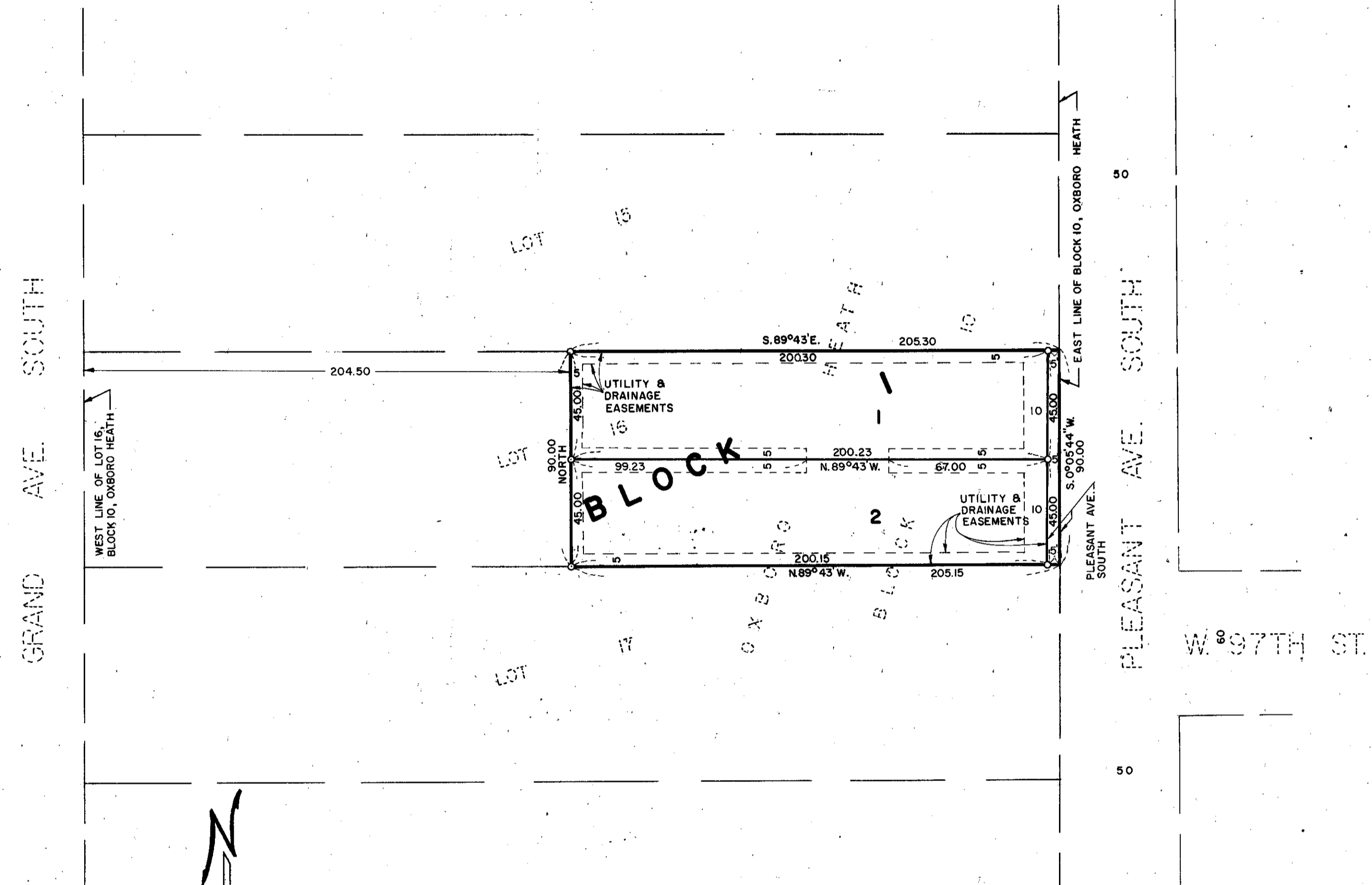
Pursuant to Chapter 810, Minnesota Laws of 1969, this plat has been approved this day of A.D. 1981.

Robert L. Bakka, Hennepin County Surveyor by \_\_\_\_\_

COUNTY RECORDER, Hennepin County, Minnesota.

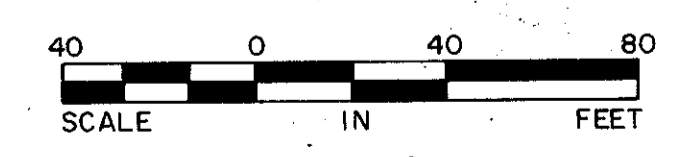
I hereby certify that this plat of STROMS ADDITION was filed for record in this office this day of A.D. 1981, at o'clock M

R. Dan Carlson, County Recorder by \_\_\_\_\_ Deputy



o DENOTES 1/2-INCH x 14-INCH SET IRON MONUMENT

THE EAST LINE OF BLOCK 10, OXBORO HEATH IS ASSUMED TO HAVE A BEARING OF S.0°05'44" W.



F.C. JACKSON  
LAND SURVEYORS