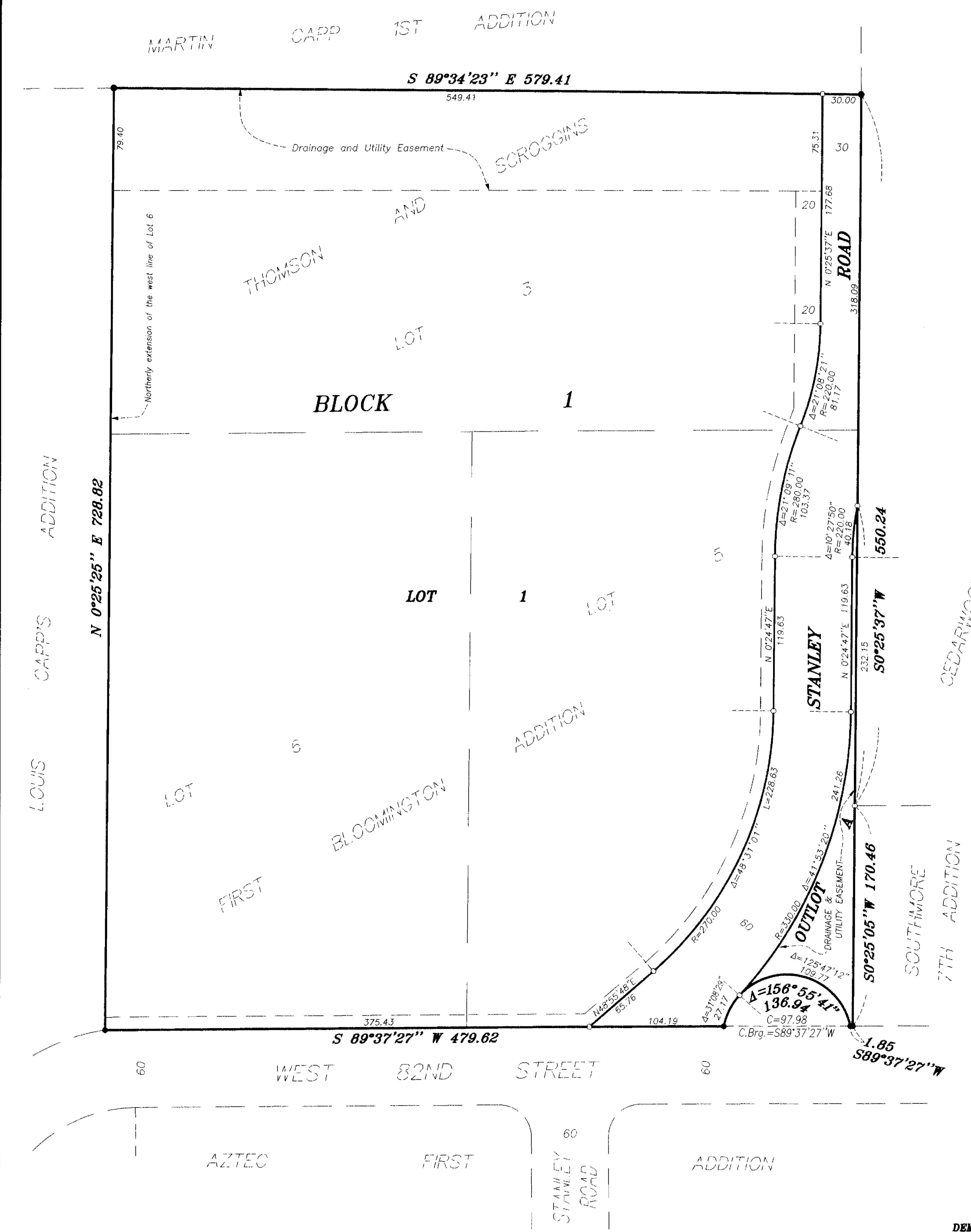


# STANLEY ADDITION

R.T. DOC. NO. \_\_\_\_\_



KNOW ALL MEN BY THESE PRESENTS: That SFI LTD. Partnership 57, a Nebraska limited partnership, fee owner, and R-D Investment Co. a Nebraska corporation, mortgagee of the following described property situated in the County of Hennepin, State of Minnesota, to wit:

Lots 5 and 6, and that part of Lot 3 lying East of the extension North of the West line of Lot 6, across said Lot 3, Block 1, Thomson and Scroggins First Bloomington Addition, Hennepin County, Minnesota.

Have caused the same to be surveyed and platted as STANLEY ADDITION, and do hereby donate and dedicate to the public use forever the public way and the easements for drainage and utility purposes as shown on the plat.

In witness whereof said SFI LTD. Partnership 57, a Nebraska limited partnership has caused these presents to be signed by its proper officers this 30th day of October, 2008.

SFI Ltd. Partnership 57 By: Luxembourg Apartments Corporation  
Formerly Stanley Corporation, general partner Jacob D. Slosburg its Vice President

STATE OF Nebraska  
COUNTY OF Douglas

The foregoing instrument was acknowledged before me this 30th day of October, 2008, by Jacob D. Slosburg the Vice President and by Luxembourg Apartments Corporation the General Partner of SFI LTD. Partnership 57, a Nebraska limited partnership, on behalf of said partnership.

GENERAL NOTARY - State of Nebraska

Connie L. Lopez  
Notary Public Douglas County, Nebraska  
My Commission expires 5/8/12

In witness whereof said R-D Investment Co., a Nebraska Corporation has caused these presents to be signed by its proper officers this 30th day of October, 2008.

R-D Investment Co., Inc.

By: D. David Slosburg its Partner By: \_\_\_\_\_ its \_\_\_\_\_

STATE OF Nebraska  
COUNTY OF Douglas

The foregoing instrument was acknowledged before me this 30th day of October, 2008, by D. David Slosburg the Partner and by \_\_\_\_\_ the \_\_\_\_\_ of R-D Investment Co., a Nebraska corporation, on behalf of said corporation.

GENERAL NOTARY - State of Nebraska

Connie L. Lopez  
Notary Public Douglas County, Nebraska  
My Commission expires 5/8/12

I hereby certify that this plat of STANLEY ADDITION is a correct representation of the boundary survey; that all mathematical data and labels are correctly designated on the plat; that all monuments depicted on the plat have been or will be correctly set within one year as indicated on the plat; that all water boundaries and wet lands as of the date of the surveyor's certification are shown and labeled on the plat; that all public ways are shown and labeled on the plat. I further certify that this plat was prepared by me or under my direct supervision and that I am a duly licensed land surveyor under the laws of the State of Minnesota.

David E. Crook  
David E. Crook, Licensed Land Surveyor  
Minnesota License No. 22414

STATE OF MINNESOTA  
COUNTY OF HENNEPIN

The foregoing Surveyor's Certificate was acknowledged before me this 27th day of JUNE, 2008, by David E. Crook, a Licensed Land Surveyor

ALISHA LOUISE MEAGHER  
NOTARY PUBLIC - MINNESOTA  
My Comm Exp. Jan. 31, 2011

Alisha Louise Meagher  
Notary Public Hennepin County, Minnesota  
My Commission expires Jan. 31 2011

BLOOMINGTON, MINNESOTA

This plat of STANLEY ADDITION was approved and accepted by the City Council of Bloomington, Minnesota at a regular meeting thereof held this \_\_\_\_\_ day of \_\_\_\_\_, 20\_\_\_\_. If applicable, the written comments and recommendations of the Commissioner of Transportation and the County Highway Engineer have been received by the City or the prescribed 30 day period has elapsed without receipt of such comments and recommendations, as provided by Minnesota Statutes, Section 505.03, Subd. 2.

CITY COUNCIL OF BLOOMINGTON, MINNESOTA

By: \_\_\_\_\_  
Mayor  
By: \_\_\_\_\_  
City Manager

TAXPAYER SERVICES DEPARTMENT, HENNEPIN COUNTY, MINNESOTA  
I hereby certify that taxes payable in 20\_\_\_\_ and prior years have been paid for land described on this plat.

Dated this \_\_\_\_\_ day of \_\_\_\_\_, 20\_\_\_\_.

Jill L. Alverson, Hennepin County Auditor

By: \_\_\_\_\_, Deputy

SURVEY DIVISION, HENNEPIN COUNTY, MINNESOTA

Pursuant to MN STAT. Sec. 383B.565 (1969), this plat has been approved this \_\_\_\_\_ day of \_\_\_\_\_, 20\_\_\_\_.

William P. Brown, Hennepin County Surveyor

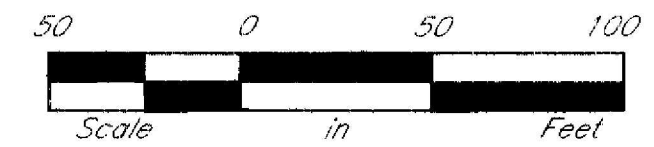
By: \_\_\_\_\_

REGISTRAR OF TITLES, HENNEPIN COUNTY, MINNESOTA

I hereby certify that the within plat of STANLEY ADDITION was filed in this office this \_\_\_\_\_ day of \_\_\_\_\_, 20\_\_\_\_, at \_\_\_\_\_ o'clock \_\_\_\_\_ M.

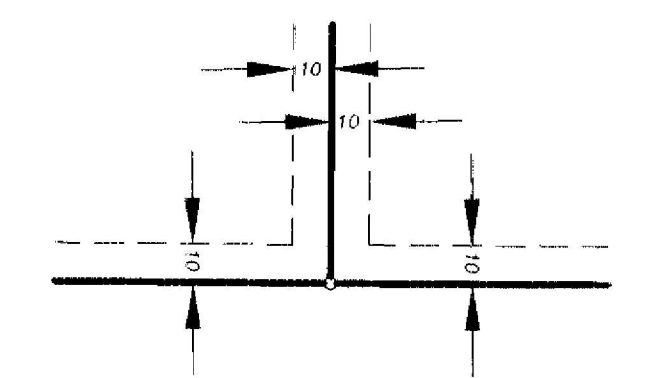
Michael H. Cuniff, Registrar of Titles

By: \_\_\_\_\_, Deputy



- Denotes 1/2 inch by 14 inch iron pipe marked by license no. 22414.
- Denotes iron monument found

Utility & Drainage Easements are shown thus:



Being 10 feet in width and adjoining lot lines, unless otherwise indicated and being 10 feet in width and adjoining R/W lines unless otherwise indicated.