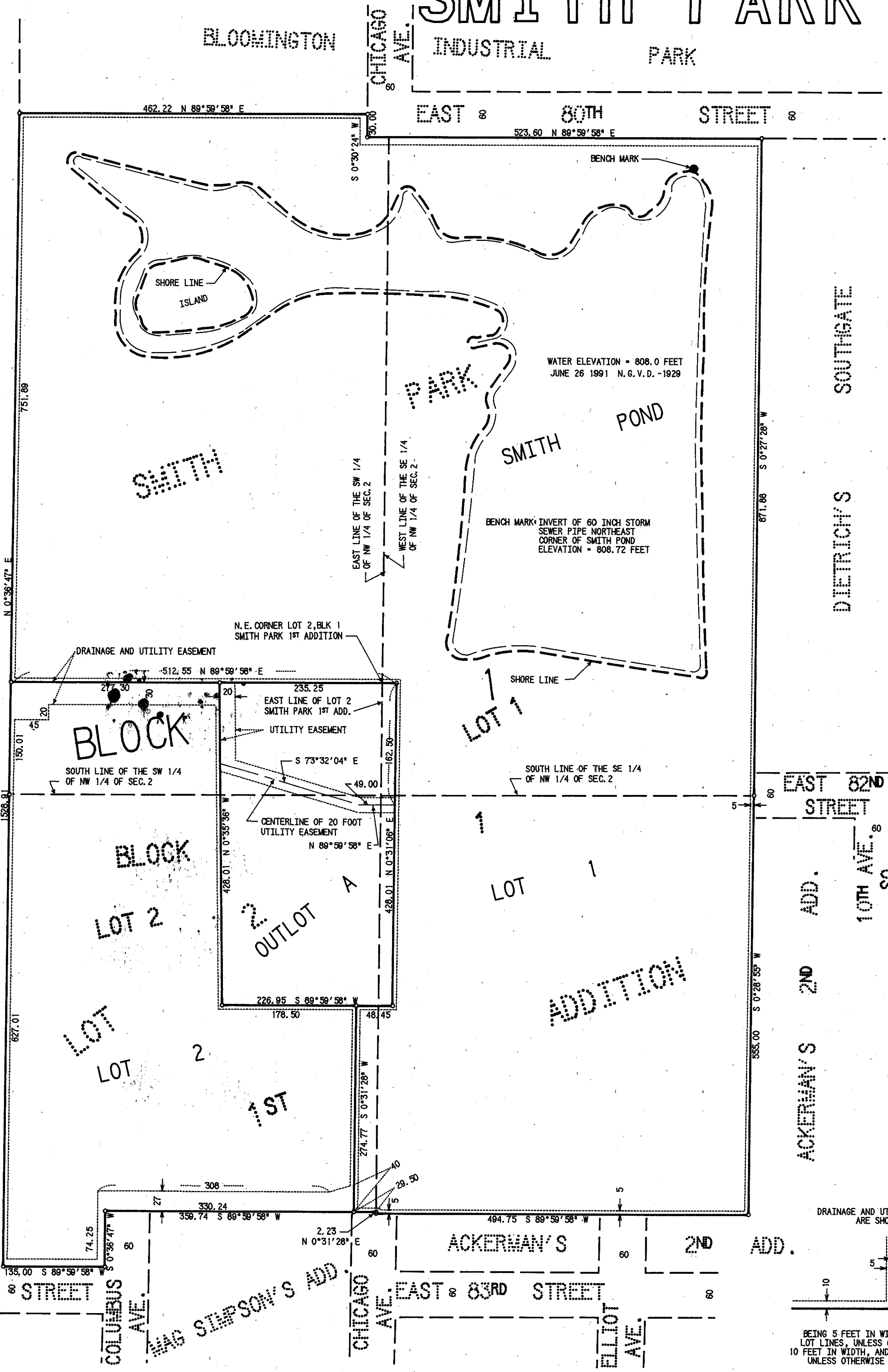


SMITH PARK 2ND ADDITION

R. T. DOC. NO. _____
C. R. DOC. NO. _____



KNOW ALL MEN BY THESE PRESENTS: That the City of Bloomington, a Minnesota municipal corporation, owner and proprietor of the following described land, situate in the County of Hennepin, State of Minnesota, to wit:

Lot 1, Block 1, SMITH PARK 1ST ADDITION

And that the Lutheran High School Association of Greater Minneapolis, a Minnesota non-profit corporation, owner and proprietor of the following described land, situate in the County of Hennepin, State of Minnesota, to wit:

Lot 2, Block 1, SMITH PARK 1ST ADDITION

Have caused the same to be surveyed and platted as SMITH PARK 2ND ADDITION and do hereby donate and dedicate to the public, for public use forever the drainage and utility easements as shown on said plat.

In witness whereof said City of Bloomington, a Minnesota municipal corporation, has caused these presents to be signed by its proper officers and the seal of the City of Bloomington to be hereunto affixed this 14th day of July, 1993.

SIGNED: Neil W. Peterson Its Mayor Mark E. Bernhardtson Its Manager

And in witness whereof said Lutheran High School Association of Greater Minneapolis, a Minnesota non-profit Corporation, has caused these presents to be signed by its proper officers this 15th day of March, 1993.

SIGNED by: Duane C. Helm its Chairman and by James R. Spitzack its Secretary.

STATE OF MINNESOTA
COUNTY OF HENNEPIN
The foregoing instrument was acknowledged before me this 14th day of July, 1993, by Neil Peterson, its Mayor, and Mark E. Bernhardtson, its Manager, of said City of Bloomington, a Minnesota Municipal Corporation, on behalf of said corporation.

Karen Kraemer
Notary Public, Hennepin County, Minnesota
My Commission Expires 12-2-95

STATE OF MINNESOTA
COUNTY OF HENNEPIN
The foregoing instrument was acknowledged before me this 15th day of March, 1993, by Duane C. Helm its Chairman and by James R. Spitzack its Secretary of Lutheran High School Association of Greater Minneapolis, a Minnesota non-profit Corporation, on behalf of said Corporation.

Duane C. Helm
Notary Public, Hennepin County, Minnesota
My Commission Expires 8-1-93

I hereby certify that I have surveyed and platted the property described on this plat as SMITH PARK 2ND ADDITION; that this plat is a correct representation of said survey; that all distances are correctly shown in feet and hundredths of a foot; that all monuments have been correctly placed in the ground as shown; and that the outside boundary lines are correctly designated; and that there are no public highways to be designated in the plat.

Leland C.N. Smith
Leland C.N. Smith, Land Surveyor
Minnesota License No. 14942

STATE OF MINNESOTA
COUNTY OF HENNEPIN
The foregoing surveyor's certificate was acknowledged before me this 12th day of July, 1991 by Leland C.N. Smith, Land Surveyor.

Garry Stusse
Notary Public, Hennepin County, Minnesota
My Commission Expires 3-2-94

BLOOMINGTON, MINNESOTA
This plat of SMITH PARK 2ND ADDITION was approved and accepted by the City Council of the City of Bloomington, Minnesota at a regular meeting thereof, held this 29th day of July, 1992. If applicable, the written comments and recommendations of the Commissioner of Transportation and the County Highway Engineer have been received by the City or the prescribed 30-day period has elapsed without receipt of such comments and recommendations as provided by Minn. Statutes, Section 505.03, Subd. 2.

CITY COUNCIL OF BLOOMINGTON, MINNESOTA
BY: Neil W. Peterson its Mayor BY: Mark E. Bernhardtson its Manager

PROPERTY TAX AND PUBLIC RECORDS DEPARTMENT, Hennepin County, Minnesota
I hereby certify that taxes payable in 19__ and prior years have been paid for land described on this plat. Dated this ___ day of ___, 1993.

Patrick H. O'Connor, Hennepin County Auditor BY: _____ Deputy
SURVEY DIVISION, Hennepin County, Minnesota

Pursuant to, MINN. STAT. Sec. 383B.565 (1969), this plat has been approved this ___ day of ___, 1993.
Gary F. Coswell, Hennepin County Surveyor BY: _____

REGISTRAR OF TITLES, Hennepin County, Minnesota
I hereby certify that the within plat of SMITH PARK 2ND ADDITION was filed in this office this ___ day of ___, 1993 at ___ o'clock ___ m.

R. Dan Carlson, Registrar of Titles BY: _____ Deputy

COUNTY RECORDER, Hennepin County, Minnesota
I hereby certify that the within plat of SMITH PARK 2ND ADDITION was filed in this office this ___ day of ___, 1993 at ___ o'clock ___ m.

R. Dan Carlson, County Recorder BY: _____ Deputy

