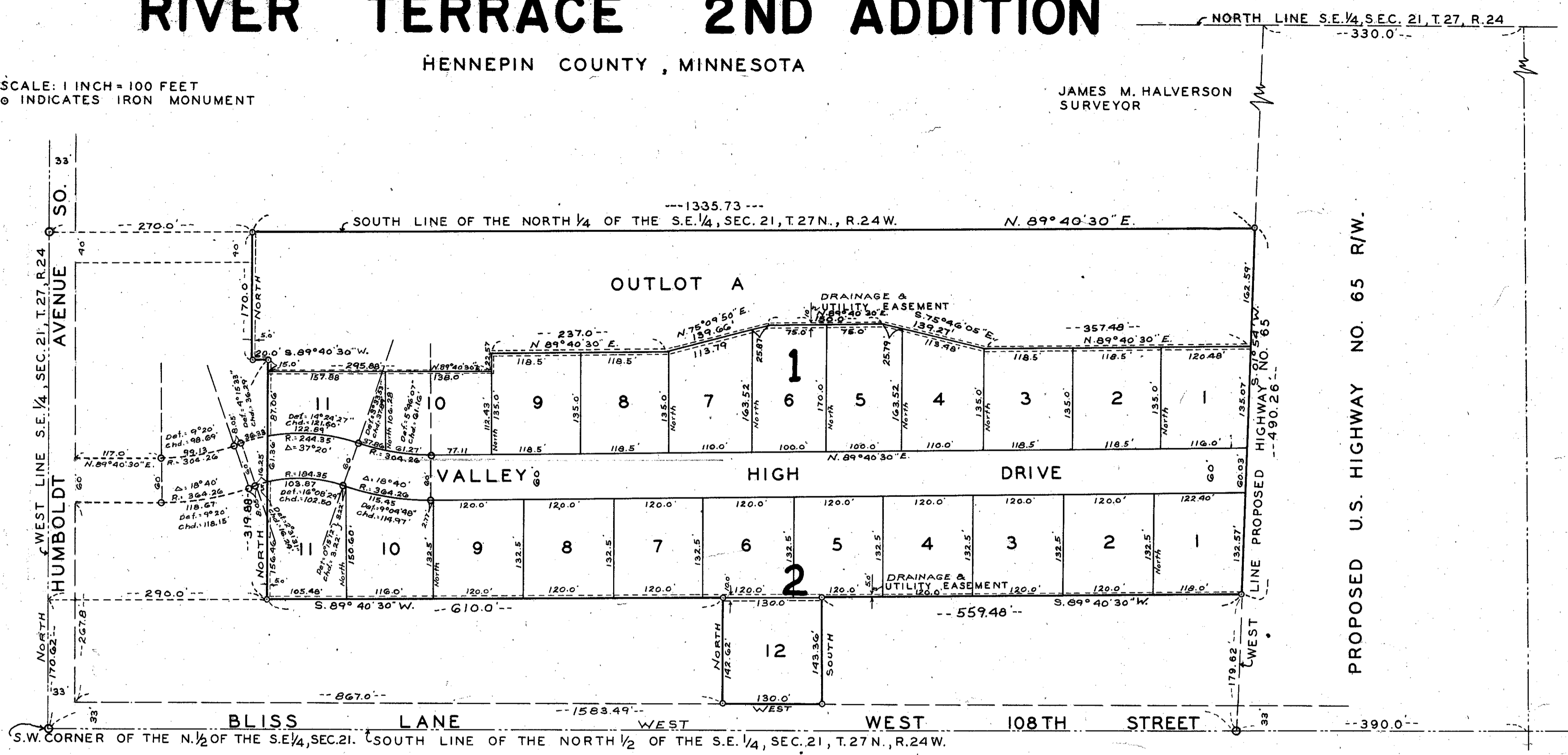
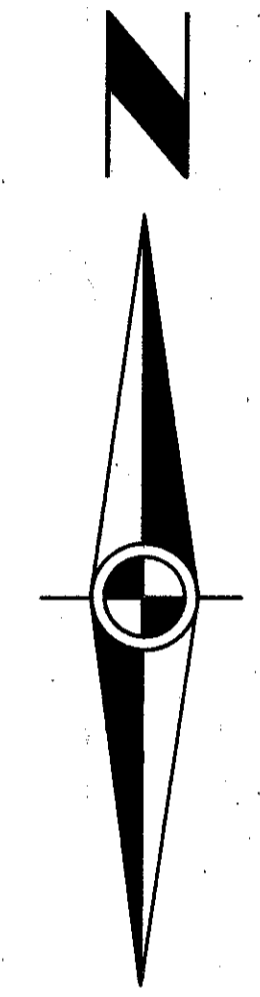


RIVER TERRACE 2ND ADDITION

HENNEPIN COUNTY, MINNESOTA

SCALE: 1 INCH = 100 FEET
 O INDICATES IRON MONUMENT

JAMES M. HALVERSON
 SURVEYOR



KNOW ALL MEN BY THESE PRESENTS:

That Forrest J. Linder and Lois E. Linder, his wife, owners and proprietors and Arthur Baillif and Emilie Baillif, his wife, Mortgagee of the following described property situated in the County of Hennepin, State of Minnesota, to wit:-- That part of the south 1/2 of the north 1/2 of the S.E. 1/4 of Section 21, T. 27 N., R. 24 W., described as follows: Commencing at a point on the south line of the north 1/4 of the S.E. 1/4 of said Section 21 distant 270.0 feet east of the west line of said S.E. 1/4; thence east along the south line of the north 1/4 of said S.E. 1/4 on a bearing of N. 89° 40' 30" E. a distance of 1,335.73 feet to the westerly line of proposed U.S. Highway No. 65; thence S. 01° 54' W. along the westerly line of said proposed Highway a distance of 490.26 feet to a point, 179.62 feet north of the south line of the N. 1/2 of said S.E. 1/4; thence S. 89° 40' 30" W. on a straight line produced to its intersection with a point on the west line of said S.E. 1/4 distant 170.62 feet north of the S.W. corner of the N. 1/2 of said S.E. 1/4, a distance of 559.48 feet; thence south to the north line of West 108th Street, a distance of 143.36 feet; thence west along the north line of west 108th Street a distance of 130.0 feet; thence north a distance of 142.62 feet to its intersection with a straight line drawn from a point on the west line of proposed Highway No. 65, distant 179.62 feet north of the south line of the N. 1/2 of said S.E. 1/4 to a point on the west line of said S.E. 1/4 distant 170.62 feet north of the S.W. corner of the N. 1/2 of said S.E. 1/4; thence S. 89° 40' 30" W. on the afore described straight line a distance of 610.0 feet; thence North parallel to and 290.0 feet east of the west line of said S.E. 1/4 a distance of 319.88 feet; thence S. 89° 40' 30" W. a distance of 20.0 feet; thence North parallel to and 270.0 feet east of the west line of said S.E. 1/4 a distance of 170.0 feet to place of beginning. Have caused the same to be surveyed and platted as "RIVER TERRACE 2nd ADDITION" and do hereby donate and dedicate to the public for the public use forever the Streets and Drives as shown on the annexed plat; also subject to the utility and drainage easements as shown on the annexed plat. In witness whereof we have hereunto set our hands and seals on this ____ day of ____ A.D. 1954.

I hereby certify that I have surveyed and platted the property described on this plat as "RIVER TERRACE 2ND ADDITION"; that this plat is a correct representation of said survey that all distances are correctly shown on the plat in feet and decimals of a foot; that the monuments for guidance of future surveys have been correctly placed in the ground as shown on the plat; and that there are no wet lands or public highways to be designated on said plat other than as shown thereon.

State of Minnesota }
 County of Hennepin } s.s.
 Registered Land Surveyor, Minnesota Reg. No. 3813
 The above certificate was subscribed and sworn to before me, a notary public within and for said County and State on this ____ day of ____ AD. 1954.
 Notary Public, Hennepin County, Minnesota
 My Commission expires ____
 This plat was checked and approved on this ____ day of ____ AD. 1954.
 County Surveyor, Hennepin County, Minnesota

In presence of: _____ Signed: _____
 _____ Signed: _____

State of Minnesota }
 County of Hennepin } s.s.
 On this ____ day of ____ A.D. 1954 before me, a notary public, within and for said County and State, personally appeared Forrest J. Linder and Lois E. Linder, his wife, and Arthur Baillif and Emilie Baillif, his wife, to me personally known to be the persons described in and who executed the foregoing instrument and acknowledged that they executed the same as their own free act and deed.
 Notary Public, Hennepin County, Minnesota
 My Commission expires ____

This plat was approved and accepted by the Village Council of the Village of Bloomington, Minnesota at a regular meeting thereof held this ____ day of ____ AD. 1954.
 VILLAGE COUNCIL OF THE VILLAGE OF BLOOMINGTON MINN.
 By: _____ its Mayor
 By: _____ its Clerk