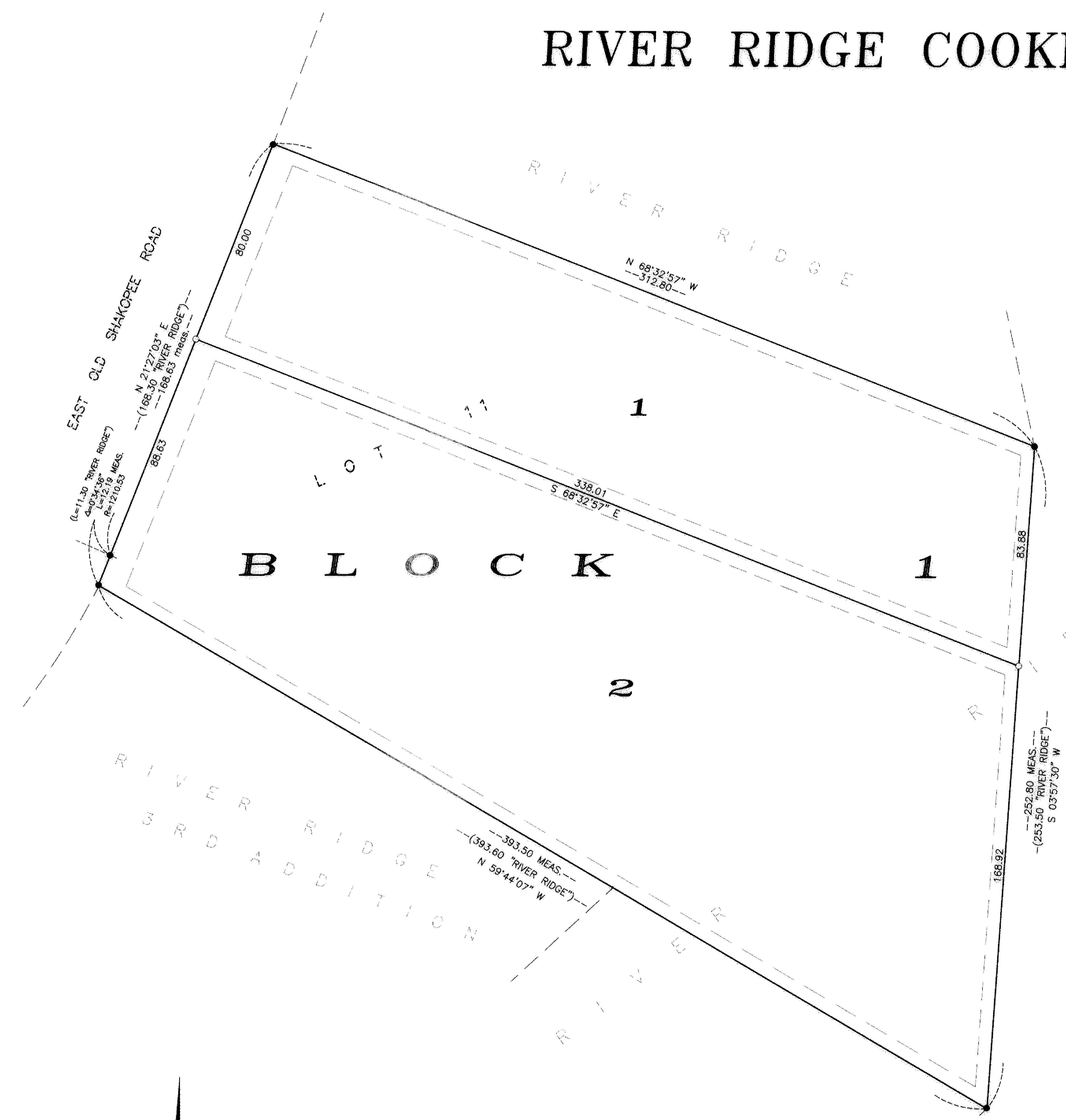


# RIVER RIDGE COOKE ADDITION



KNOW ALL MEN BY THESE PRESENTS: That John Payzant Cooke and S. Lynne Cooke, his wife owners and proprietors of the following described property situated in the State of Minnesota and County of Hennepin to wit:

Lot 11, "River Ridge".

Have caused the same to be surveyed and platted as RIVER RIDGE COOKE ADDITION and do hereby donate and dedicate to the public for public use forever the easements for utility and drainage purposes as shown on the plat. In witness whereof said John Payzant Cooke and S. Lynne Cooke, his wife, have hereunto set their hands this 21<sup>st</sup> day of JUNE, 2006

SIGNED:

*John Payzant Cooke*  
John Payzant Cooke

*S. Lynne Cooke*  
S. Lynne Cooke

STATE OF MINNESOTA  
COUNTY OF HENNEPIN

The foregoing instrument was acknowledged before me this 21<sup>st</sup> day of June, 2006 by John Payzant Cooke and S. Lynne Cooke, his wife.

*Steven H. Jorschum*  
Notary Public, Hennepin County, Minnesota  
My commission expires 1-31-10



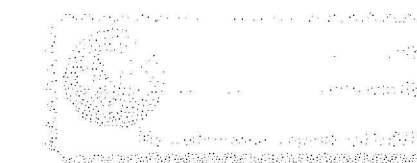
I hereby certify that I have surveyed and platted the property described on this plat as RIVER RIDGE COOKE ADDITION; that this plat is a correct representation of the survey; that all distances are correctly shown on the plat in feet and hundredths of a foot; that all monuments have been correctly placed in the ground as shown; that the outside boundary lines are correctly designated on the plat and that there are no wetlands as defined in Minnesota Statutes, Section 505.02, Subd. 1 or public highways to be designated.

*Larry R. Couture*  
Larry R. Couture, Land Surveyor  
Minnesota License No. 12267

STATE OF MINNESOTA  
COUNTY OF HENNEPIN

The foregoing Surveyors Certificate was acknowledged before me this 14<sup>th</sup> day of October, 2005, by Larry R. Couture Land Surveyor, Minnesota License No. 9018.

*James H. Couture*  
Notary Public, Hennepin County, Minnesota  
My commission expires 12-31-2010



BLOOMINGTON, MINNESOTA

This plat of RIVER RIDGE COOKE ADDITION was approved and accepted by the City Council of Bloomington, Minnesota at a regular meeting thereof held this \_\_\_\_\_ day of \_\_\_\_\_, 2005. If applicable, the written comments and recommendations of the commissioner of Transportation and the County Highway Engineer have been received by the City or the prescribed 30 day period has elapsed without receipt of such comments and recommendations, as provided by Minn. Statutes, Section 505.03, Subd.2.

By \_\_\_\_\_ Mayor by \_\_\_\_\_ City Manager

TAXPAYER SERVICES DEPARTMENT  
HENNEPIN COUNTY, MINNESOTA

I hereby certify that taxes payable in \_\_\_\_\_ and prior years have been paid for lands described on this plat. Dated this \_\_\_\_\_ day of \_\_\_\_\_, 2005.

Patrick H. O'Connor, Hennepin County Auditor by \_\_\_\_\_, Deputy

SURVEY DIVISION  
HENNEPIN COUNTY, MINNESOTA

Pursuant to MINN. STAT. Sec. 383b.565 (1969), this plat has been approved this \_\_\_\_\_ day of \_\_\_\_\_, 2005.

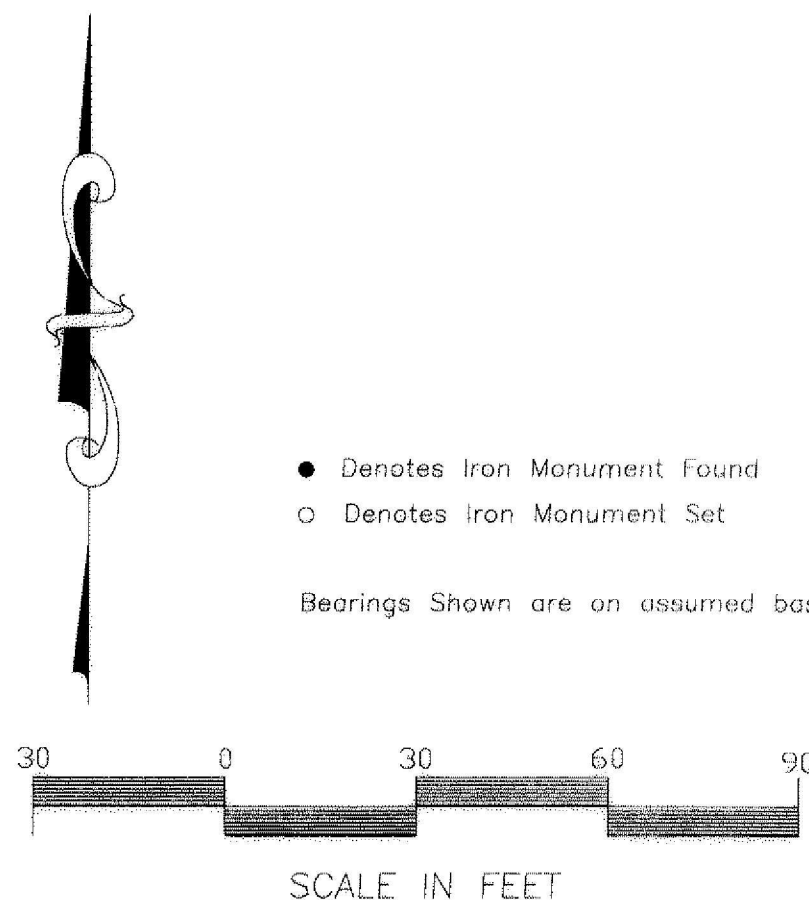
William P. Brown, Hennepin County Surveyor by \_\_\_\_\_

REGISTRAR OF TITLES  
HENNEPIN COUNTY, MINNESOTA

I hereby certify that the within plat of RIVER RIDGE COOKE ADDITION was filed in this office this \_\_\_\_\_ day of \_\_\_\_\_, 2005, at \_\_\_\_\_ o'clock \_\_\_\_\_ M.

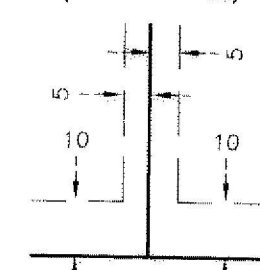
Michael H. Cunniff, Registrar of Titles

by \_\_\_\_\_, Deputy



● Denotes Iron Monument Found  
○ Denotes Iron Monument Set  
Bearings Shown are on assumed basis.

Drainage and Utility Easements are Shown Thus:  
(NOT TO SCALE)



Being 10 feet in width adjoining right of way lines and 5 feet in width adjoining lot lines, unless otherwise indicated on the plat.