

RICHARD SAVAGE ADDITION

HENNEPIN COUNTY, MINNESOTA.

Clyde H. Parker
SURVEYOR

Know all men by these presents that we, Richard T. Savage and Muriel B. Savage, his wife, owners and proprietors and LeRoy Cooper and Nettie M. Cooper, his wife, mortgagees of the following described property situate in the State of Minnesota, County of Hennepin, to wit:

The West 242.7 feet of the North 165 feet of the Northwest 1/4 of the North-east 1/4 of Section 20, Township 27, Range 24

Have caused the same to be surveyed and platted as RICHARD SAVAGE ADDITION and do hereby donate and dedicate to the public for public use forever, the avenue and street as shown on the annexed plat; also subject to easement for drainage and utilities as shown on the annexed plat.
In witness whereof we have hereunto set our hands and seals this ___ day of ___ A.D., 1957.

In Presence Of:
Guy C. Parker) As to Richard T. Savage
Emma A. Parker) and Muriel B. Savage
Louise Rose) As to LeRoy Cooper
Guy C. Parker) and Nettie M. Cooper

Signed:
Richard T. Savage
Richard T. Savage
Muriel B. Savage
Muriel B. Savage
LeRoy Cooper
LeRoy Cooper
Nettie M. Cooper
Nettie M. Cooper

STATE OF MINNESOTA) SS
COUNTY OF HENNEPIN)

On this 4th day of Oct A.D., 1957 before me a Notary Public within and for said County and State, personally appeared Richard T. Savage and Muriel B. Savage, his wife and LeRoy Cooper and Nettie M. Cooper, his wife to me known to be the persons described in and who executed the foregoing instrument and said Richard T. Savage and Muriel B. Savage, his wife and LeRoy Cooper and Nettie M. Cooper, his wife affirm and acknowledge said instrument to be their own free act and deed.

Guy C. Parker Notary Public, Henn. Co. Minn

My Commission expires May 14, 1961

I do hereby certify that I have surveyed and platted the property described on this plat, as RICHARD SAVAGE ADDITION, that this plat is a correct representation of said survey; that all distances are correctly shown on the plat in figures representing feet and decimals of a foot; that the monuments for guidance of future surveys have been correctly placed in the ground as shown on the plat; that the outside boundary lines are correctly designated on the plat and that there are no wet lands or public highways to be designated on the plat other than as shown thereon.

Clyde H. Parker
Registered Land Surveyor,
Minnesota No. 2055

STATE OF MINNESOTA) SS
COUNTY OF HENNEPIN)

The above certificate was subscribed and sworn to before me, a Notary Public, within and for said County and State, on this 4th day of Oct A.D., 1957.

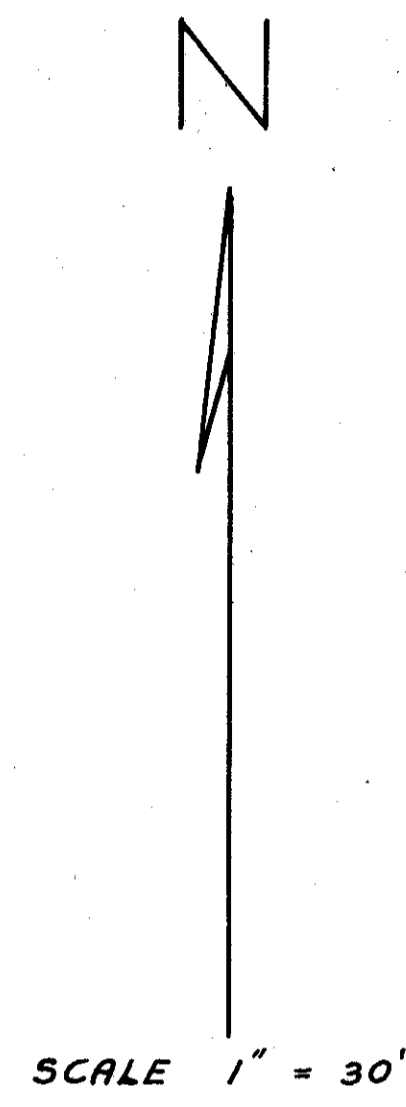
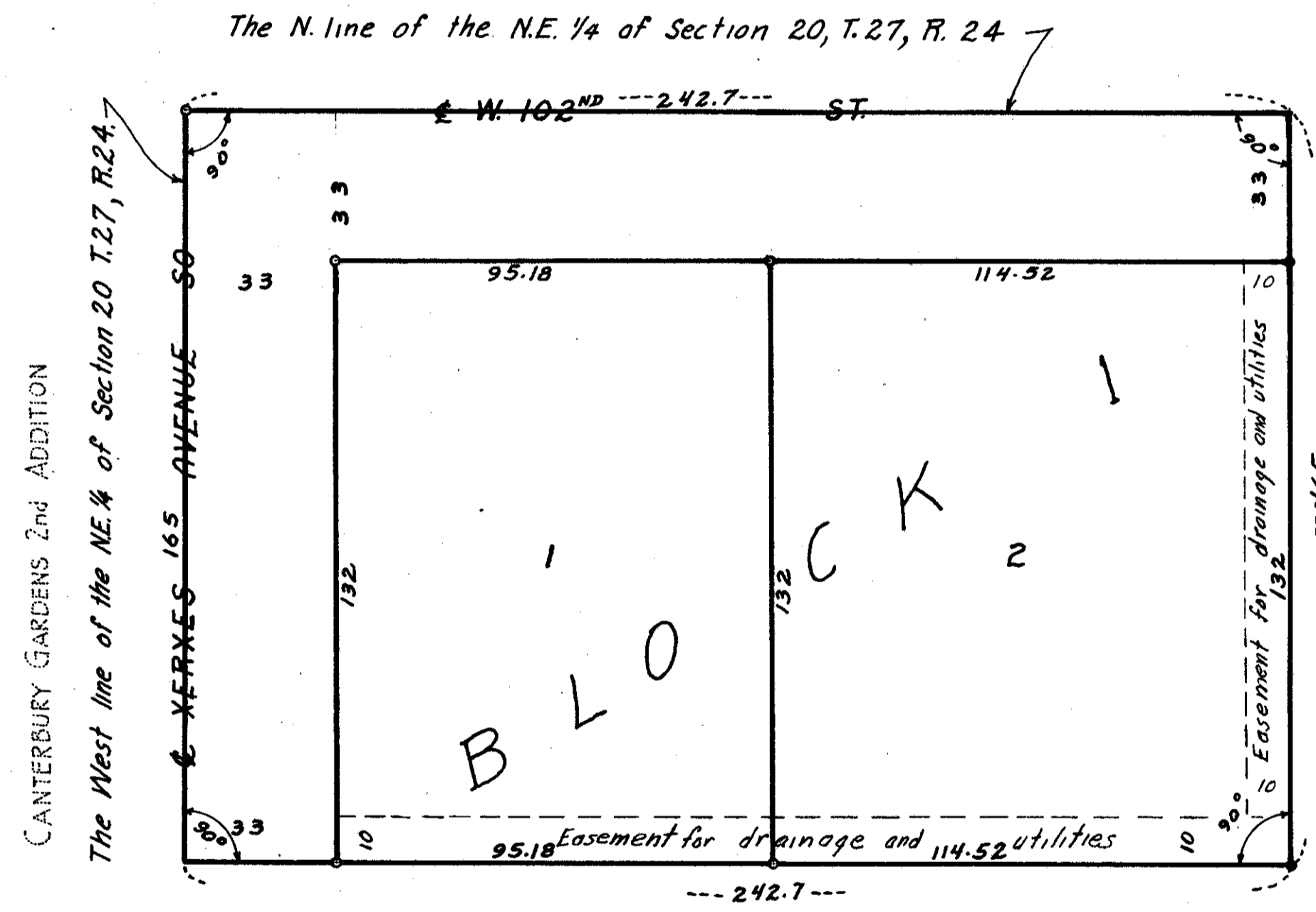
Guy C. Parker
Notary Public, Hennepin Co., Minn
My Commission expires May 14, 1961

The annexed plat was approved and accepted by the Village Council of Bloomington, Minnesota at a regular meeting thereof held this 4th day of Oct A.D., 1957.

VILLAGE COUNCIL OF BLOOMINGTON, MINN.
BY: Edwin Mikolajczyk Mayor
BY: Wils A. Hall its Clerk

The above plat was checked and approved this ___ day of ___ A.D., 1957.

Hennepin County Surveyor



Note: o denotes iron monument.