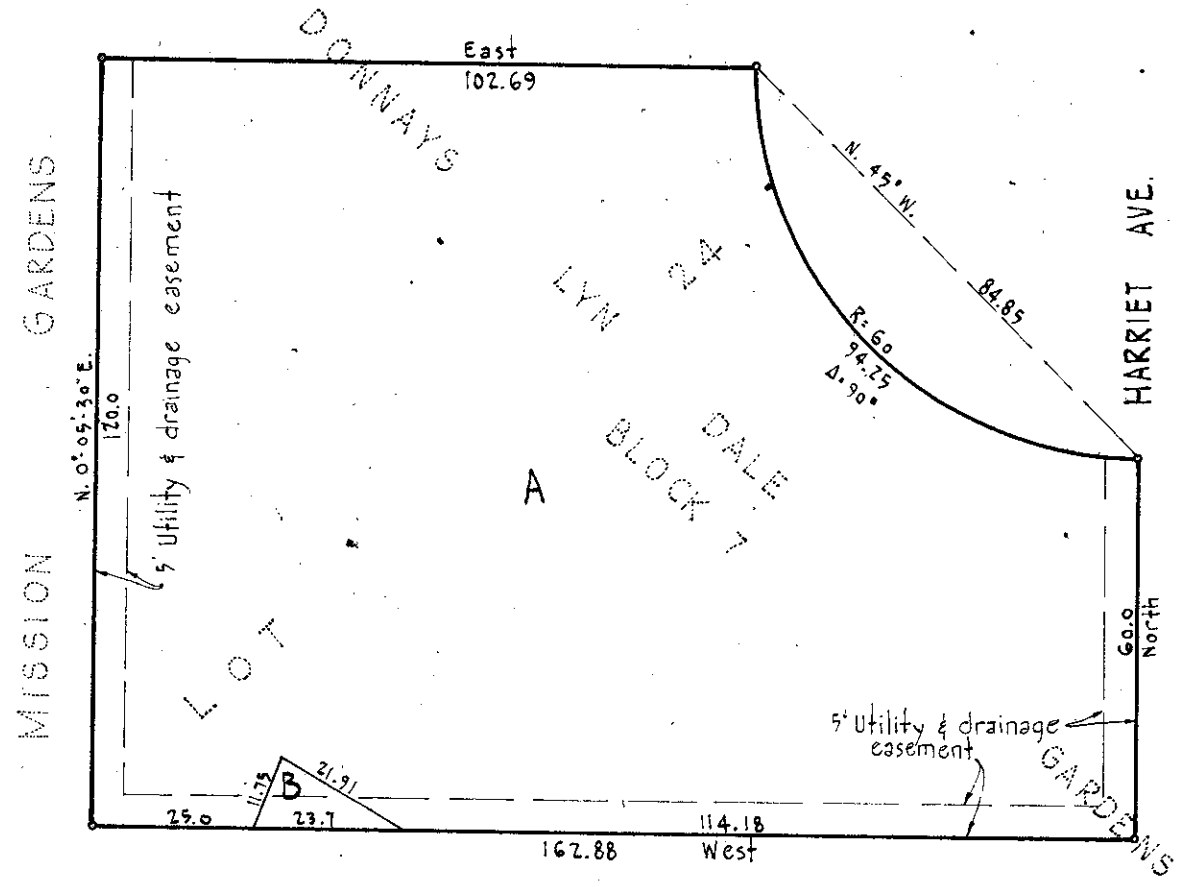


REGISTERED LAND SURVEY NO. 909
HENNEPIN COUNTY, MINNESOTA

GEORGE E. HOPKINS
Civil Engr. & Land Surveyor

N
SCALE: 1" = 30'
Bearings are assumed
"o" denotes iron monument



I hereby certify that in accordance with Chapter 508, Minnesota Statutes of 1949, as amended, I have surveyed the following described land situate in the County of Hennepin, State of Minnesota, to wit:

Lot 24, Block 7, DONNAYS LYN DALE GARDENS, according to the plat thereof on file or of record in the office of the Registrar of Titles in and for Hennepin County, Minnesota;

That the above plat is a correct delineation of said survey as surveyed by me the 30th day of July, 1957.

Dated the 29th day of February A.D. 1960

George E. Hopkins
Land Surveyor - Minnesota Reg. No 3116