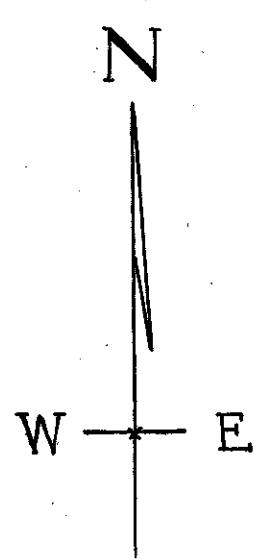
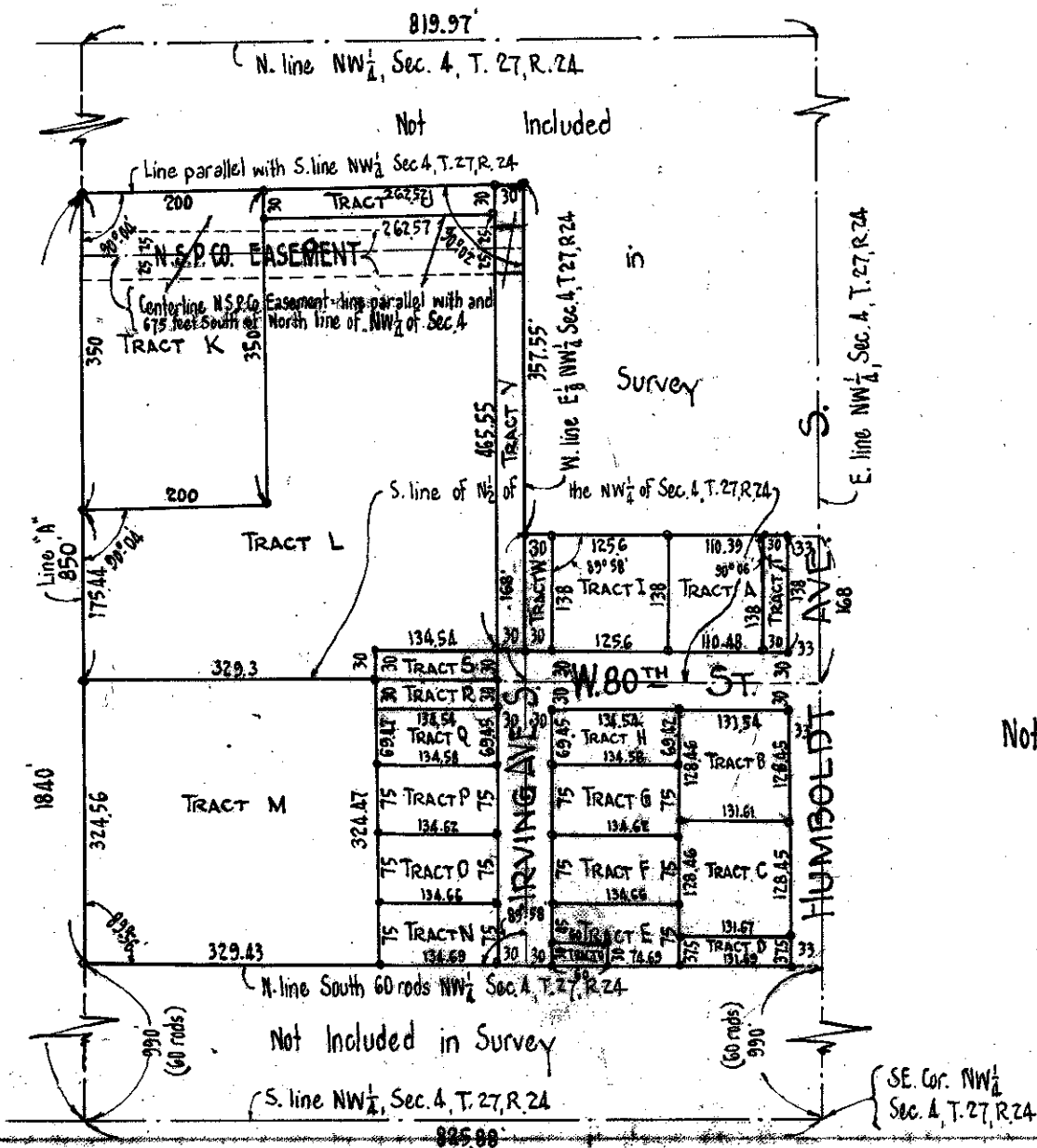


SCALE: 1" = 200' REGISTERED LAND SURVEY No. 165
 CARTWRIGHT & OLSON LAND SURVEYORS HENNEPIN COUNTY, MINN.



Note: ~
 Iron Monuments set at all points indicated by circles on the annexed survey

I hereby certify that in accordance with the provisions of Chapter 50B, Minnesota Statutes of 1949, as amended, I have surveyed the following described tracts of land situate in the County of Hennepin and State of Minnesota to-wit:—
 That part of the Northwest 1/4 of Section 4, Township 27, Range 24, lying East of a line which is hereinafter referred to as line "A" and is drawn from a point in the North line of said Northwest 1/4 distant 819.97 feet West, measured along said North line, from the East line of said Northwest 1/4 to a point in the South line of said Northwest 1/4 distant 825.88 feet West, measured along said South line from the Southeast corner of said Northwest 1/4 and bounded on the South by the North line of the South 60 rods of said Northwest 1/4 and
 Bounded on the North by a line described as follows: Commencing at a point in line "A" distant 1840 feet North of the South line of said Northwest 1/4; thence East parallel with the South line of said Northwest 1/4 to the West line of the East 1/8 of said Northwest 1/4; thence South along said West line to a point 168 feet North of the South line of the North 1/2 of the said Northwest 1/4; thence East parallel with the South line of said North 1/2 to the East line thereof and there terminating. That the survey shown hereon is a correct delineation of said survey.
 Minneapolis, Minn.

Dated this ___ day of ___ A. D. 195___ Surveyor- Minn. Reg. No. 1983