

# REGISTERED LAND SURVEY NO. 1039

HENNEPIN COUNTY, MINNESOTA

"o" Denotes Iron Monument.

Bearings Shown Are Assumed.

October, 1961

Scale: 1" = 60'

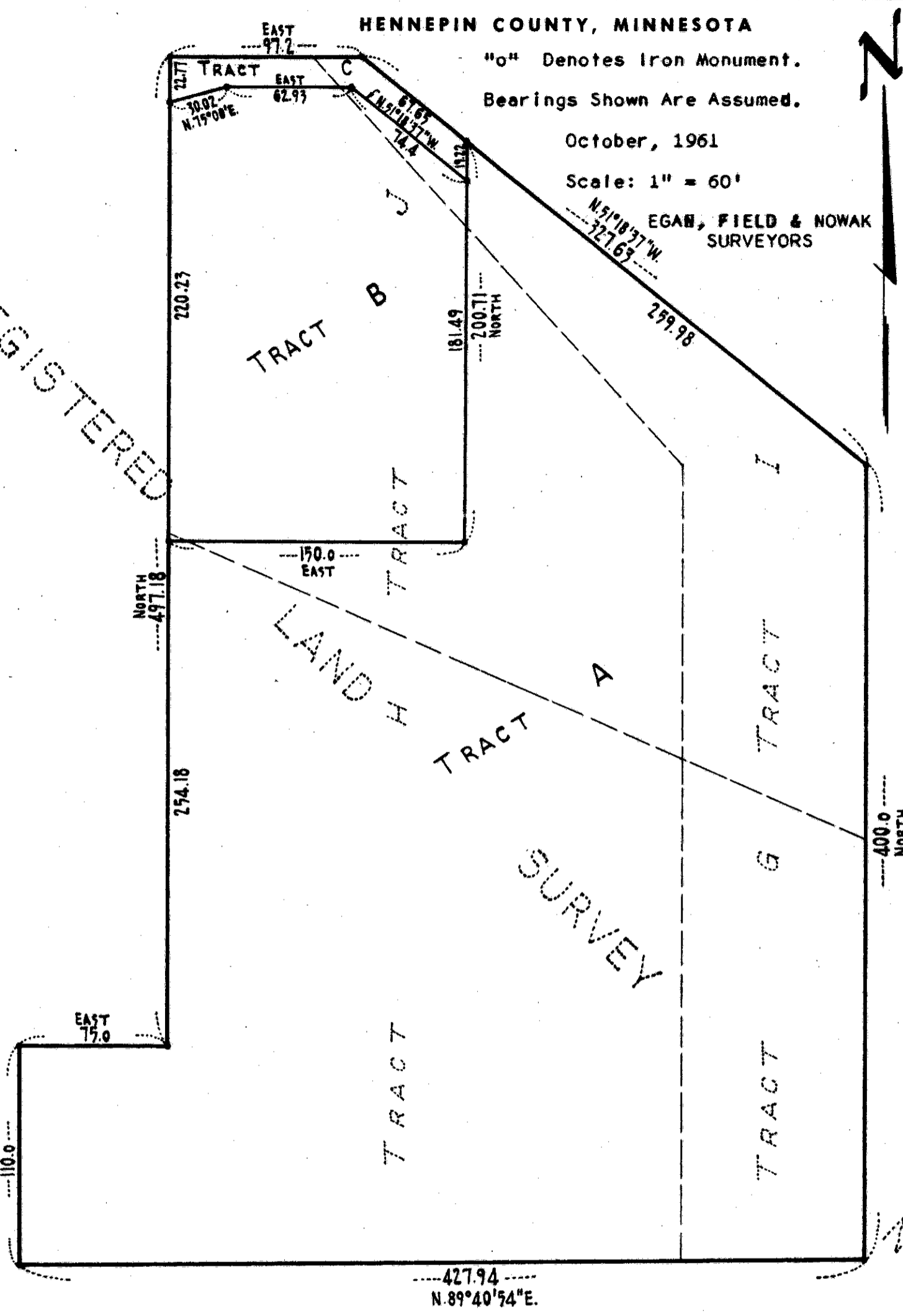
EGAN, FIELD & NOWAK  
SURVEYORS

COUNTY ROAD (NORMANDALE ROAD)

No. 34 REGISTERED

ROAD

COUNTY



I hereby certify that in accordance with the provisions of Chapter 508, Minnesota Statutes of 1949, as amended, I have surveyed the following described tract of land in the County of Hennepin and State of Minnesota, to-wit: Tracts G, H, I and J, Registered Land Survey No. 899, Files of Registrar of Titles, County of Hennepin, State of Minnesota.

That the survey shown hereon is a correct delineation of said survey.

Dated this 2<sup>ND</sup> day of NOVEMBER A.D. 1961.

*Arthur E. Cottland*  
Surveyor-Minnesota Registration No. 6122

This Registered Land Survey was approved and accepted by the City Council of Bloomington, Minnesota, at a regular meeting thereof held this 15<sup>TH</sup> day of January A.D. 1962.

CITY COUNCIL OF BLOOMINGTON, MINNESOTA

by *Robert A. Freeman* its Mayor

by *Raymond A. Olsen* its Manager