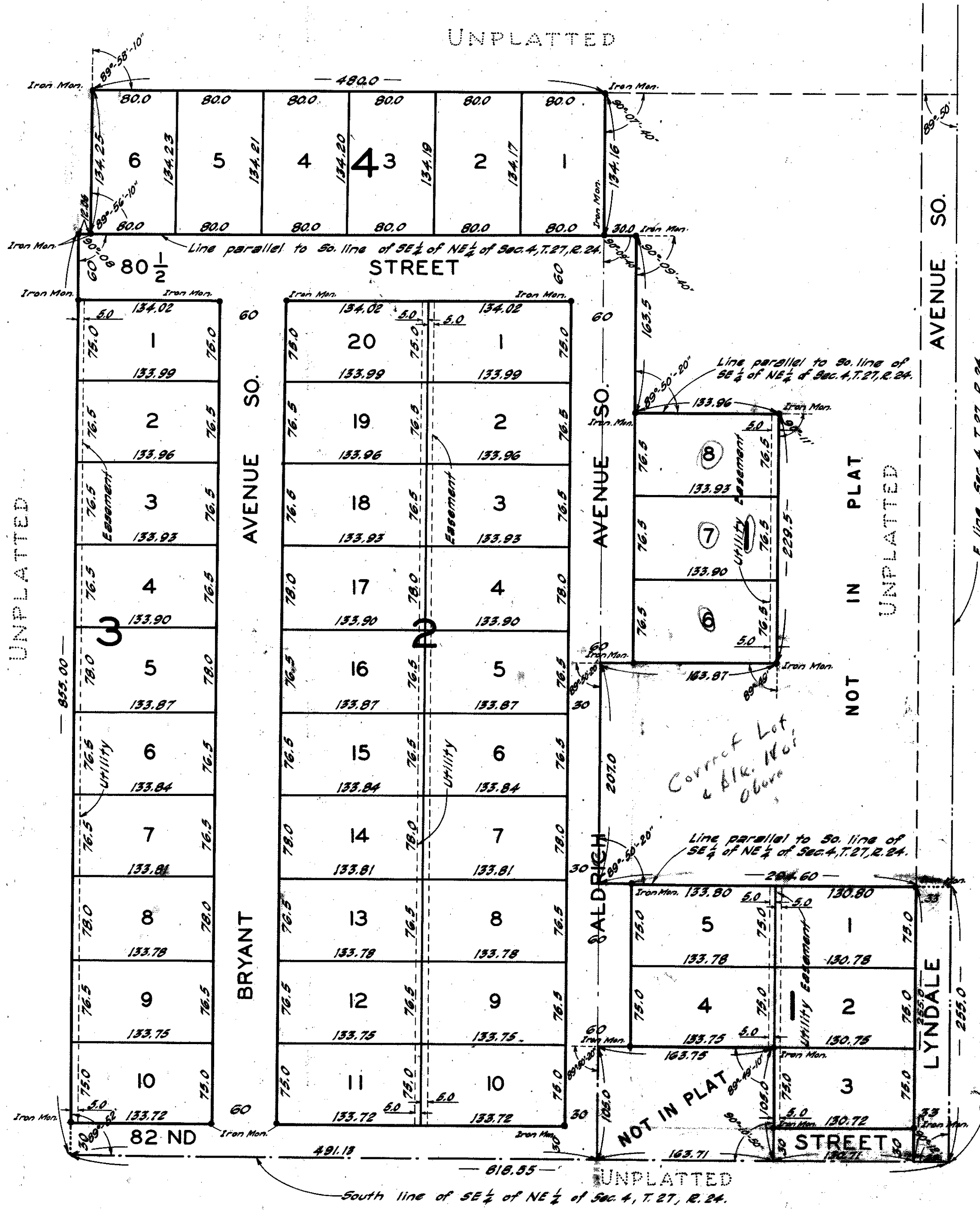


PRAIRIE VILLAGE 1ST ADDITION

HENNEPIN COUNTY, MINNESOTA



KNOW ALL MEN BY THESE PRESENTS: That the Coffman Realty Company, a Minnesota Corporation, owner and proprietor of the following property situated in the State of Minnesota and County of Hennepin to-wit:-
All that part of the S.E. 1/4 of the N.E. 1/4 of Section 4, Township 27, Range 24 described as follows: Beginning at the East 1/4 corner of said Section 4; thence West along the South line of said S.E. 1/4 of N.E. 1/4 a distance of 33 feet to the actual point of beginning; thence continuing West along said South line a distance of 130.71 feet; thence deflecting to the right 90 degrees, 10 minutes and 50 seconds a distance of 105 feet; thence deflecting to the left 90 degrees, 10 minutes and 50 seconds along a line parallel with the South line of said S.E. 1/4 of N.E. 1/4 a distance of 163.75 feet; thence deflecting to the left 89 degrees, 50 minutes and 20 seconds a distance of 105 feet to the South line of said S.E. 1/4 of N.E. 1/4; thence West along said South line of said S.E. 1/4 of N.E. 1/4 a distance of 491.13 feet; thence deflecting to the right 90 degrees and 08 minutes a distance of 855 feet; thence deflecting to the right 89 degrees and 52 minutes along a line parallel with the South line of said S.E. 1/4 of N.E. 1/4 a distance of 12.06 feet; thence deflecting to the left 89 degrees, 56 minutes and 10 seconds a distance of 134.25 feet; thence deflecting to the right 89 degrees and 58 minutes and 10 seconds a distance of 480 feet; thence deflecting to the right 90 degrees, 07 minutes and 40 seconds a distance of 134.16 feet; thence deflecting to the left 90 degrees, 09 minutes and 40 seconds along a line parallel with the South line of said S.E. 1/4 of N.E. 1/4 a distance of 30 feet; thence deflecting to the right 90 degrees, 09 minutes and 40 seconds a distance of 163.5 feet; thence deflecting to the left 90 degrees, 09 minutes and 40 seconds along a line parallel with the South line of said S.E. 1/4 of N.E. 1/4 a distance of 133.96 feet; thence deflecting to the right 90 degrees and 11 minutes a distance of 229.5 feet; thence deflecting to the right 89 degrees and 49 minutes a distance of 163.87 feet; thence deflecting to the left 89 degrees, 50 minutes and 20 seconds a distance of 207.0 feet; thence deflecting to the left 90 degrees, 09 minutes and 40 seconds along a line parallel with the South line of said S.E. 1/4 of N.E. 1/4 a distance of 294.6 feet; thence South 255.0 feet to the actual point of beginning.
Have caused the same to be surveyed and platted as "PRAIRIE VILLAGE 1ST ADDITION" and do hereby donate and dedicate to the public for public use forever the streets and avenues as shown on the annexed plat.
In witness whereof, said Coffman Realty Company has caused these presents to be signed by its proper officers and its corporate seal to be hereunto affixed this _____ day of _____, 1952.

In the Presence of:-
_____ as to W.D. Coffman & Meredith R. Coffman By _____ its President
_____ its Secretary & Treasurer

State of Minnesota } s.s. On this _____ day of _____, 1952 before me, a Notary Public, within the said County of Hennepin appeared W.D. Coffman and Meredith R. Coffman, to me personally known, who being each duly sworn, did say that they are respectively President and Secretary Treasurer of Coffman Realty Company the Corporation named in the foregoing instrument, that the seal affixed to said instrument is the Corporate seal of said Corporation and that said instrument was signed and sealed in behalf of said Corporation by authority of its Board of Directors and said W.D. Coffman and Meredith R. Coffman acknowledged said act to be the free act and deed of said Corporation.

Notary Public, Hennepin County, Minnesota.
My Commission Expires: _____

State of Minnesota } s.s. I do hereby certify that I have surveyed and platted the property described on this plat as "PRAIRIE VILLAGE 1ST ADDITION"; that this plat is a correct representation of said survey; that all distances are correctly shown on the plat in feet and decimals of a foot; that the monuments for guidance of future surveys have been correctly placed in the ground as shown on the plat; that the outside boundary lines are correctly designated on the plat; that the topography of the land is correctly shown on the plat, and that there are no wet lands or public highways to be designated on the plat other than as shown thereon.

Land Surveyor - Minnesota Reg. No. 3116

The above certificate subscribed and sworn to before me on this _____ day of _____, 1952.

Notary Public, Hennepin County, Minnesota.
My Commission Expires: _____

This plat was approved and accepted by the Board of County Commissioners, Hennepin County, Minnesota at a regular meeting thereof held this _____ day of _____, 1952.

County Auditor
By Deputy _____

Annexed plat approved and accepted this _____ day of _____, 1952.

County Surveyor.

Annexed plat approved and accepted this _____ day of _____, 1952.

County Highway Engineer

Approved as to form and execution this _____ day of _____, 1952.

Spec. Ass't. County Attorney

This plat was approved and accepted by the Planning & Zoning Commission of Bloomington Township, Hennepin County, Minnesota at a regular meeting thereof held this _____ day of _____, 1952.

Chairman of the Planning & Zoning Commission.
Secretary of the Planning & Zoning Commission.