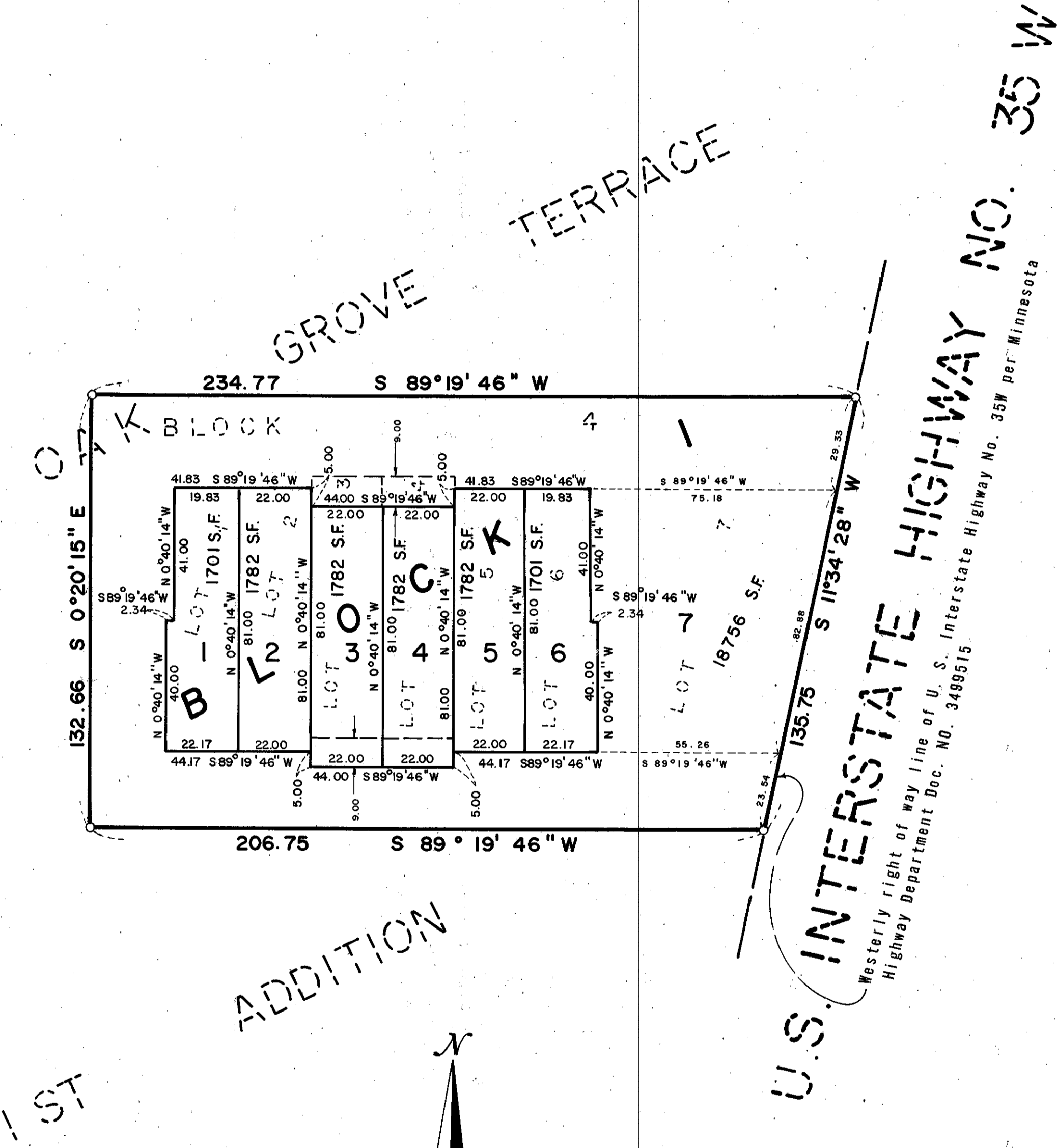
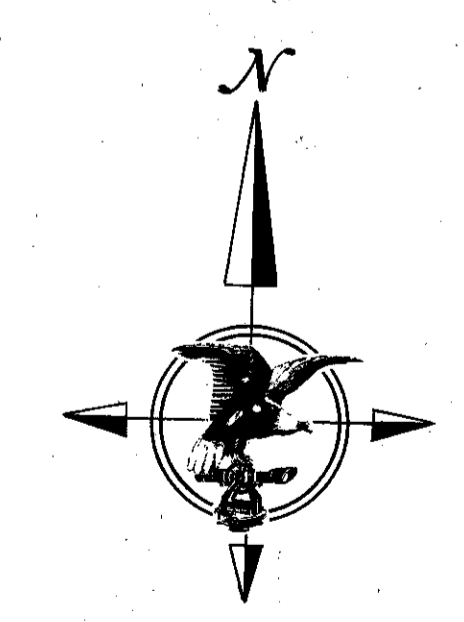


OAK GROVE TERRACE 2ND ADDITION



1ST ADDITION



SCALE: 1 INCH = 30 FEET
 ○ DENOTES IRON MONUMENT
 BEARINGS SHOWN ARE BASED ON ASSUMED DATUM

KNOW ALL MEN BY THESE PRESENTS: That LGS Concord Corporation, a Minnesota corporation, owner and proprietor and The First National Bank of Saint Paul, a United States corporation, mortgagee of the following described property situate in the County of Hennepin, State of Minnesota, to wit:

Lots 1, 2, 3, 4, 5, 6 and 7, Block 4, OAK GROVE TERRACE 1ST ADDITION, according to the recorded plat thereof, on file or of record in the office of the Register of Deeds in and for said County and State.

Have caused the same to be surveyed and platted as OAK GROVE TERRACE 2ND ADDITION.

In witness whereof LGS Concord Corporation, a Minnesota corporation, has caused these presents to be signed by its proper officers and its corporate seal to be hereunto affixed this 13th day of November A.D., 1973.

And The First National Bank of Saint Paul, a United States corporation, has caused these presents to be signed by its proper officers and its corporate seal to be hereunto affixed this 13th day of NOVEMBER A.D., 1973.

SIGNED:

LGS Concord Corporation

James W. Lussman its Pres.

Charles R. Albrecht its Secy. - Treas.

The First National Bank of Saint Paul

Robert J. Timm its Asst. V. Pres.

J. F. Mathews Real Estate Officer

State of Minnesota
County of Hennepin

The foregoing instrument was acknowledged before me this 13th day of November, 1973 by James W. Lussman President and Charles R. Albrecht Secretary - Treasurer of LGS Concord Corporation, a Minnesota corporation, on behalf of said corporation.

JANE SIMMONS
Notary Public, Hennepin County, Minn.
My Commission Expires Mar. 21, 1978.

Jane Simmons
Notary Public Hennepin County, Minnesota

State of Minnesota
County of RAMSEY

The foregoing instrument was acknowledged before me this 13th day of NOVEMBER, 1973 by ROBERT J. TIMM, ASST. V. PRES. of The First National Bank of Saint Paul, a United States corporation, on behalf of said corporation.

E. R. ERIKSON,
Notary Public, Ramsey County, Minn.
My Commission Expires Jan. 28, 1975

E. R. Erikson
Notary Public RAMSEY County, Minnesota

I hereby certify that I have surveyed and platted the property described on this plat as OAK GROVE TERRACE 2ND ADDITION; that this plat is a correct representation of said survey; that all distances are correctly shown on said plat in feet and hundredths of a foot that all monuments have been correctly placed in the ground as shown on said plat; that the outside boundary lines are designated on said plat; and there are no wet lands or public highways to be designated on said plat.

Arvid T. Bodin
Arvid T. Bodin
Land Surveyor
Minn. Reg. No. 9396

State of Minnesota
County of Carver

The foregoing instrument was acknowledged before me this 12 day of November, 1973 by Arvid T. Bodin.

WILLIAM E. DIEDRICH
Notary Public, Carver County, Minn.
My Commission Expires Sept. 7, 1979.

William E. Diedrich
Notary Public Carver County, Minnesota

The plat of OAK GROVE TERRACE 2ND ADDITION was approved and accepted by the City Council of Bloomington, Minnesota at a regular meeting thereof held this _____ day of _____ A.D., 1973.

CITY COUNCIL OF BLOOMINGTON, MINNESOTA

By: _____ Mayor By: _____ Manager

Pursuant to Chapter 810, Minnesota laws of 1969, this plat has been approved this _____ day of _____ A.D., 1973.

By: Elmer J. Peterson
Hennepin County Surveyor

