

# OAK GROVE TERRACE 1ST ADDITION

KNOW ALL MEN BY THESE PRESENTS: That Concord Development Corporation, a Minnesota corporation, owner and proprietor of the following described property situate in the County of Hennepin, State of Minnesota, to wit:

That part of the Southeast 1/4 of the Northeast 1/4 of Section 21, Township 27, Range 24, West of Highway 35W

Has caused the same to be surveyed and platted as OAK GROVE TERRACE 1ST ADDITION and does hereby donate and dedicate to the public for public use forever, the streets and drainage and utility easement as shown on this plat.

In witness whereof Concord Development Corporation, has caused these presents to be signed by its proper officers and its corporate seal to be hereunto affixed this \_\_\_\_\_ day of \_\_\_\_\_ A.D., 19\_\_.

IN PRESENCE OF: \_\_\_\_\_ SIGNED: Concord Development Corporation  
Witness \_\_\_\_\_ Witness \_\_\_\_\_ its \_\_\_\_\_  
Witness \_\_\_\_\_ Witness \_\_\_\_\_ its \_\_\_\_\_

State of Minnesota \_\_\_\_\_  
County of \_\_\_\_\_  
On this \_\_\_\_\_ day of \_\_\_\_\_ A.D., 19\_\_, before me, a Notary Public, within and for said County and State, personally appeared \_\_\_\_\_ and \_\_\_\_\_, to me personally known, who being by me each duly sworn did say that they are the \_\_\_\_\_ and \_\_\_\_\_ respectively of Concord Development Corporation, the corporation named in the foregoing instrument; that the seal affixed to said instrument is the corporate seal of said corporation; that said instrument was signed and sealed in behalf of said corporation by authority of its Board of Directors and said \_\_\_\_\_ and \_\_\_\_\_ acknowledge said instrument to be the free act and deed of said corporation.

Notary Public, \_\_\_\_\_ County, Minnesota  
My Commission Expires \_\_\_\_\_

I hereby certify that I have surveyed and platted the property described on this plat as OAK GROVE TERRACE 1ST ADDITION; that this plat is a correct representation of said survey; that all distances are correctly shown on said plat in feet and decimals of a foot; that all monuments have been correctly placed in the ground as shown; that the outside boundary lines are correctly designated; and that there are no wet lands to be designated on said plat.

Arvid T Bodin  
Arvid T Bodin  
Land Surveyor  
Minn. Reg. No. 9396

State of Minnesota \_\_\_\_\_  
County of Hennepin The Surveyor's certificate was subscribed and sworn to before me, a Notary Public, this 28<sup>th</sup> day of October A.D., 1971.

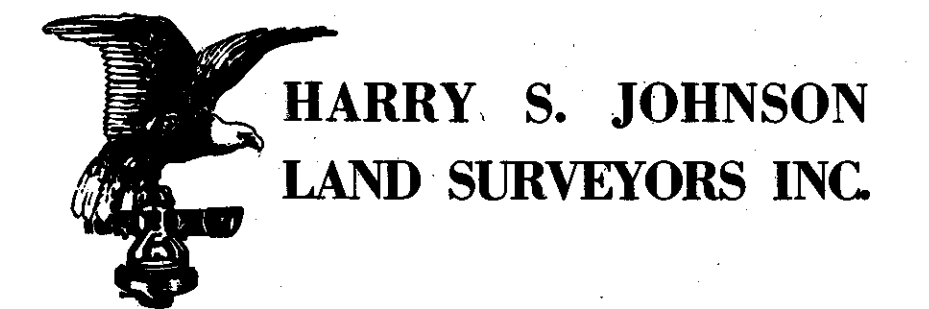
Wesley B. Baillif  
WESLEY B. BAILLIF  
Notary Public, Hennepin County, Minn.  
My Commission Expires April 11, 1978.  
Notary Public, Hennepin County, Minnesota  
My Commission Expires April 11, 1978

The plat of OAK GROVE TERRACE 1ST ADDITION was accepted by the City Council of Bloomington, Minnesota at a regular meeting thereof held this \_\_\_\_\_ day of \_\_\_\_\_ A.D., 19\_\_.

CITY COUNCIL OF BLOOMINGTON, MINNESOTA  
By: \_\_\_\_\_ Mayor By: \_\_\_\_\_ Manager

Pursuant to Chapter 810, Minnesota Laws of 1969, this plat has been approved this \_\_\_\_\_ day of \_\_\_\_\_ 19\_\_.

By: \_\_\_\_\_  
Elmer J. Peterson  
Hennepin County Surveyor



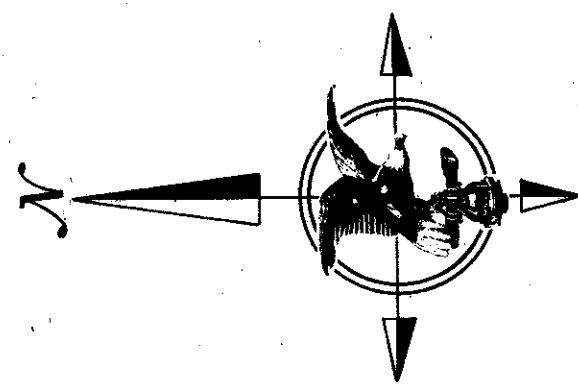
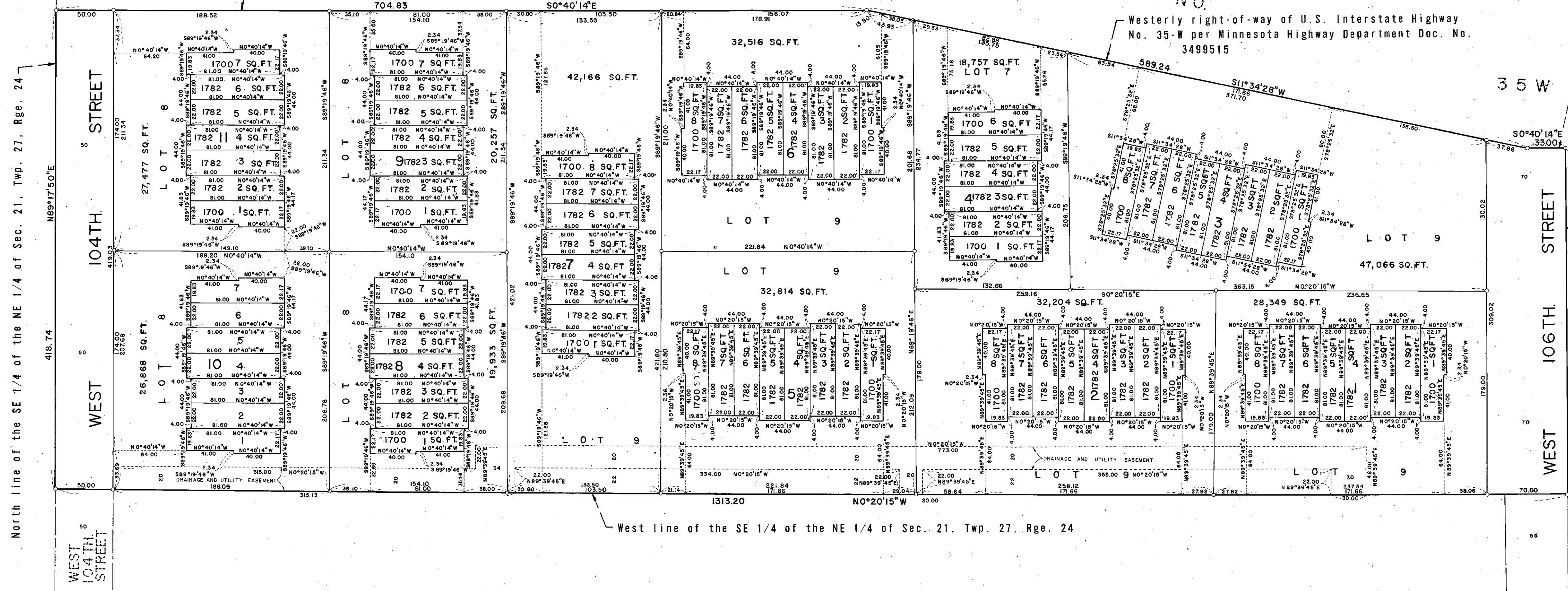
# OAK GROVE TERRACE 1ST ADDITION

U. S. INTERSTATE HIGHWAY

West line of U.S. Interstate Highway No. 35-W per Minnesota Highway Department Doc. No. 3339719

NO. Westery right-of-way of U.S. Interstate Highway No. 35-W per Minnesota Highway Department Doc. No. 3499515

West line of U.S. Interstate Highway No. 35-W per Minnesota Highway Department Doc. No. 3339719



SCALE: 1 INCH = 60 FEET  
 O DENOTES IRON MONUMENT  
 BEARINGS SHOWN ARE ASSUMED



HARRY S. JOHNSON  
 LAND SURVEYORS INC.