

NORMANDALE PLAZA

KNOW ALL MEN BY THESE PRESENTS: That Inland Construction Corp., a Minnesota Corporation, owner and proprietor, and The First National Bank of Saint Paul, a United States Corporation, mortgagee of the following described property situate in the County of Hennepin, State of Minnesota to wit:

Outlot 3, and Lot 1, Block 9 except that part thereof embraced in the plat of Normandale Highlands Third Addition, Normandale Highlands Addition, according to the plat thereof on file or of record in the office of the Registrar of Titles in and for said County.

Have caused the same to be surveyed and platted as NORMANDALE PLAZA, and do hereby donate and dedicate to the public for public use forever, the Boulevard, Street, Drive and drainage and utility easements as shown on this plat.

In witness whereof Inland Construction Corp., a Minnesota Corporation, has caused these presents to be signed by its proper officer and its corporate seal to be hereunto affixed this 23 day of JULY A.D., 1973.

And The First National Bank of Saint Paul, a United States Corporation, has caused these presents to be signed by its proper officers and its corporate seal to be hereunto affixed this ___ day of ___ A.D., 1973.

IN PRESENCE OF:

SIGNED:
INLAND CONSTRUCTION CORP.

Witness E. J. Mulla
C. H. Stephens

by Clyde E. Pemble, President

Witness Walter J. Johnson
John W. Williams

by Fred Horamann Jr., Asst. V.P.

Witness Walter J. Johnson
John W. Williams

by Gregory J. Brank Real Estate Office

State of Minnesota On this 23rd day of July A.D., 1973, before me, a Notary Public, personally appeared Clyde E. Pemble, to me personally known and who being by me duly sworn, did say that he is the President of Inland Construction Corp., the corporation named in the foregoing instrument; that the seal affixed to said instrument is the corporate seal of said corporation; that the instrument was signed and sealed in behalf of said corporation by authority of its Board of Directors and that Clyde E. Pemble acknowledge said instrument to be the free act and deed of said corporation.

Marvin D. Duffel
Notary Public Hennepin County, Minnesota
My Commission Expires May 18, 1979

State of Minnesota On this 23rd day of July A.D., 1973, before me, a Notary Public, personally appeared Fred Horamann Jr. and Gregory J. Brank, to me personally known and who being by me each duly sworn, did say that they are the Asst. V.P. and Real Estate Office respectively, of The First National Bank of Saint Paul, the corporation named in the foregoing instrument; that the seal affixed to said instrument is the corporate seal of said corporation; that the instrument was signed and sealed in behalf of said corporation by authority of its Board of Directors and that Fred Horamann Jr. and Gregory J. Brank acknowledge said instrument to be the free act and deed of said corporation.

M. Sue Lind
Notary Public Ramsey County, Minnesota
My Commission Expires May 17, 1980

I hereby certify that I have surveyed the property described on this plat as NORMANDALE PLAZA, that this plat is a correct representation of said survey; that all distances are correctly shown in feet and hundredths of a foot; that all monuments have been correctly placed in the ground as shown; that the outside boundary lines are correctly designated and that there are no wetlands to be designated.

Gordon L. Christenson
Land Surveyor, Minnesota Registration No. 9293

State of Minnesota The Surveyor's Certificate was subscribed and sworn to before me, a Notary Public, this 23 day of July A.D., 1973.

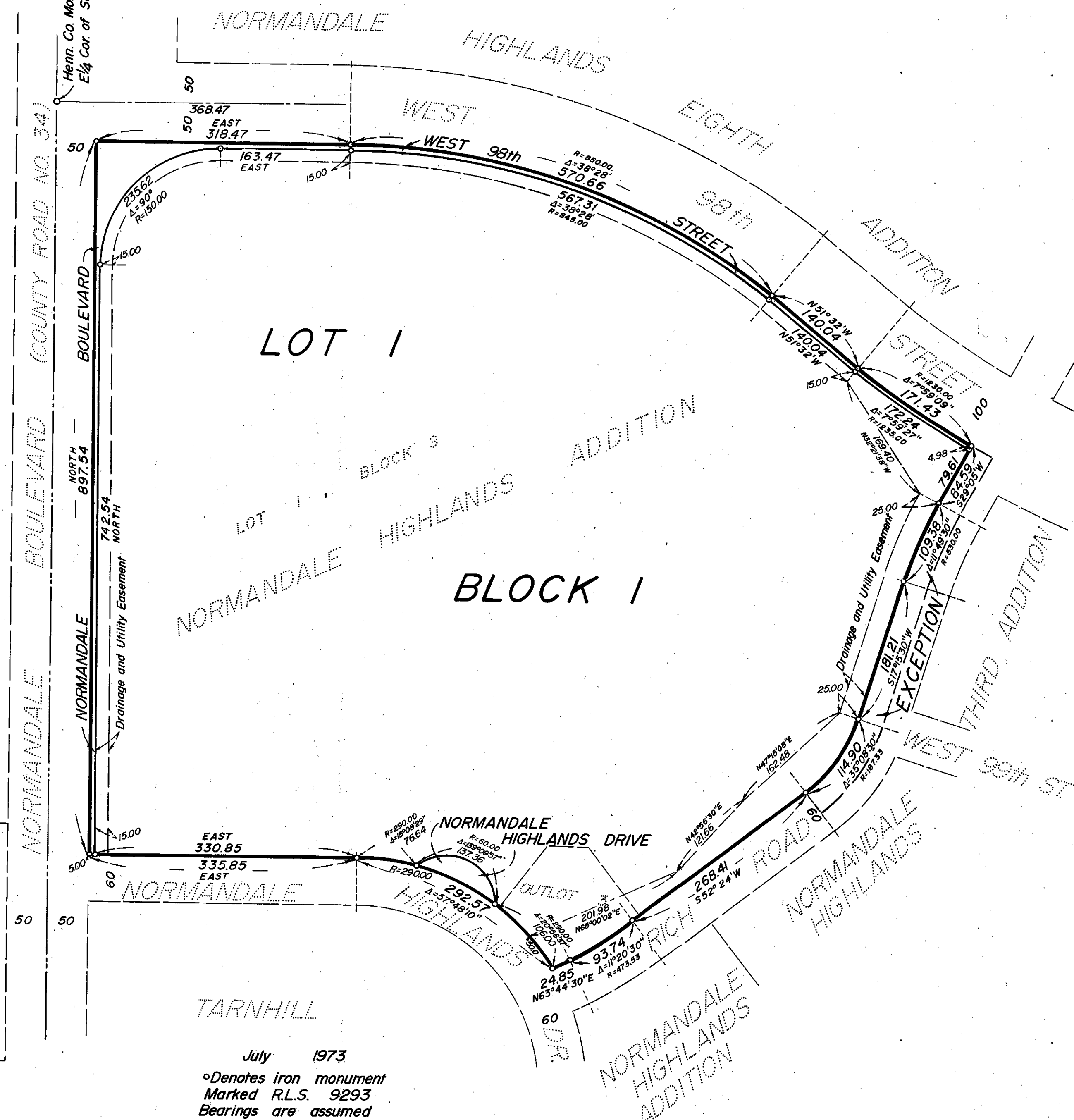
Robert L. Peters
Notary Public Scott County, Minnesota
My Commission Expires MAR 15, 1977

This plat of NORMANDALE PLAZA was approved and accepted by the City Council of Bloomington, Minnesota at a regular meeting thereof held this ___ day of ___ A.D., 1973.

by: _____ Mayor
by: _____ Manager

Pursuant to Chapter 810, Minnesota Laws of 1969, this plat has been approved this ___ day of ___ A.D., 1973.

by: Elmer J. Peterson
Hennepin County Surveyor



July 1973
o Denotes iron monument
Marked R.L.S. 9293
Bearings are assumed
Scale 1 inch = 100 feet

NORMANDALE HIGHLANDS UNITED METHODIST CHURCH PLAT

