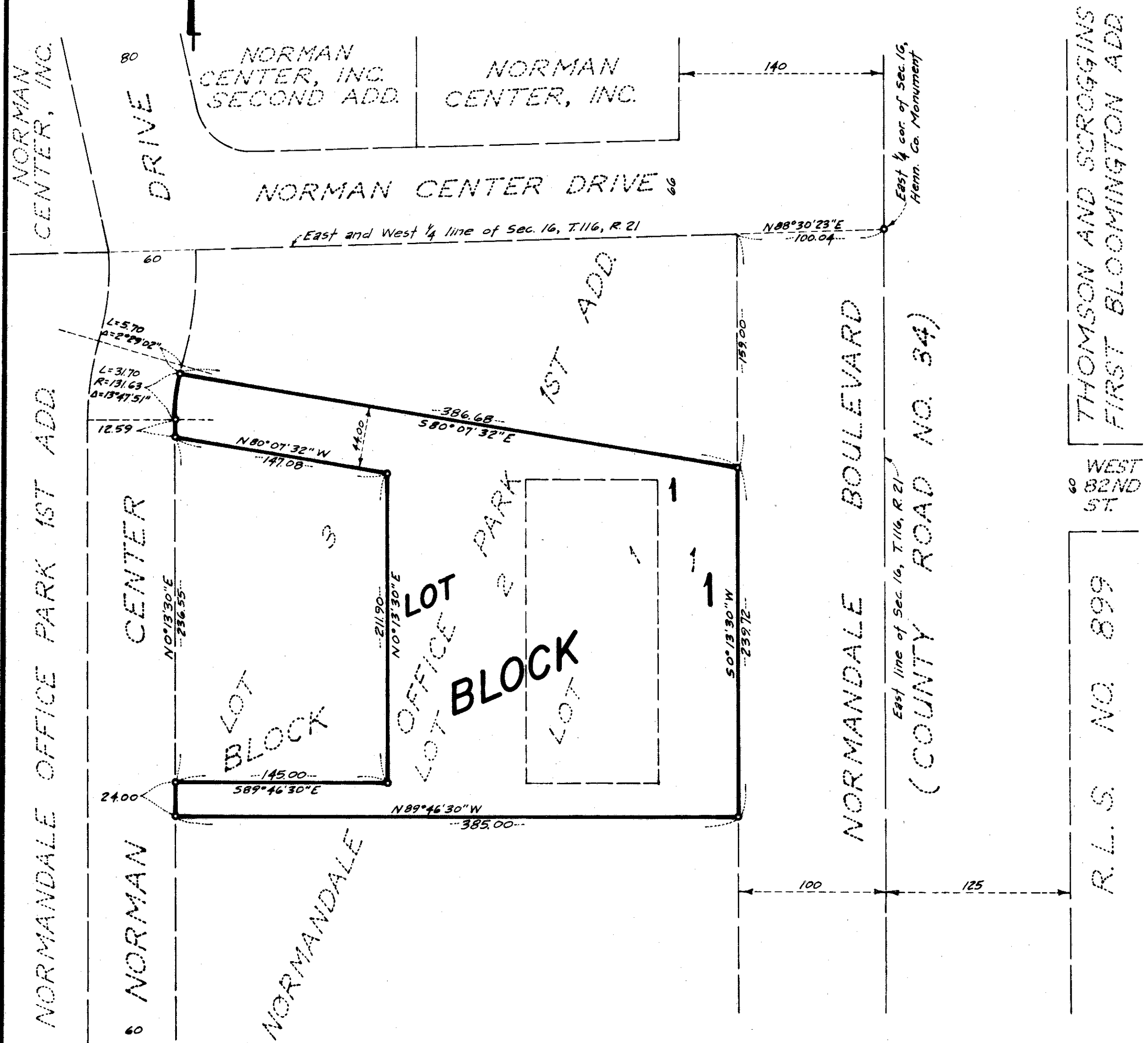


# NORMAN DALE OFFICE PARK 2ND ADDITION

Scale: 1 inch = 60 feet  
Bearings shown are assumed  
o - Denotes Iron Monument



KNOW ALL MEN BY THESE PRESENTS: That Minnesota Urban Developers, Inc., a Minnesota corporation, owner and proprietor, and the Northwestern National Bank of Minneapolis, a United States of America corporation, mortgagee, of the following described property situated in the State of Minnesota and the County of Hennepin, to wit:

Lots 1 and 2, Block 1, NORMAN DALE OFFICE PARK 1ST ADDITION, according to the plat thereof on file or of record in the office of the Registrar of Titles, Hennepin County, Minnesota.

Have caused the same to be surveyed and platted as NORMAN DALE OFFICE PARK 2ND ADDITION.

In witness whereof said Minnesota Urban Developers, Inc., a Minnesota corporation, has caused these presents to be signed by its proper officers and its corporate seal to be hereunto affixed this 11th day of October A. D. 1972, and said Northwestern National Bank of Minneapolis, a United States of America corporation, has caused these presents to be signed by its proper officers and its corporate seal to be hereunto affixed this 13 day of October A. D. 1972.

IN PRESENCE OF:

*Desiree L. McEnroe and Douglas E. Englund*  
*Desiree L. McEnroe and Douglas E. Englund*

SIGNED:  
MINNESOTA URBAN DEVELOPERS, INC.  
By *Frederick L. Wall, III*, President  
By *Lee B. Hoffmann*, Treasurer  
NORTHWESTERN NATIONAL BANK OF MINNEAPOLIS  
By *Donald Pedersen*,  
Its *Asst. Vice Pres.*

*Bersoldin W. Miller and Albert Linnier Lindholm*  
*Bersoldin W. Miller and Albert Linnier Lindholm*

STATE OF MINNESOTA  
COUNTY OF HENNEPIN

On this 11th day of October A. D. 1972, before me a Notary Public within and for said County personally appeared Frederick L. Wall, III, and Lee B. Hoffmann, to me personally known, who being each by me duly sworn did say that they are respectively the President and Treasurer of Minnesota Urban Developers, Inc., the corporation named in the foregoing instrument, and that the seal affixed to said instrument is the corporate seal of said corporation, and that said instrument was signed and sealed in behalf of said corporation by authority of its Board of Directors and said Frederick L. Wall, III, and Lee B. Hoffmann acknowledged said instrument to be the free act and deed of said corporation.

*Letitia M. McGillivray*  
Notary Public, Hennepin County, Minnesota  
My Commission Expires Nov. 1, 1978

STATE OF MINNESOTA  
COUNTY OF HENNEPIN

On this 13 day of October A. D. 1972, before me a Notary Public within and for said County personally appeared Richard D. Schneider and Donald G. Pedersen, to me personally known, who being each by me duly sworn did say that they are respectively the Vice Pres. and Asst. Vice Pres. of the Northwestern National Bank of Minneapolis, the corporation named in the foregoing instrument, and that the seal affixed to said instrument is the corporate seal of said corporation, and that said instrument was signed and sealed in behalf of said corporation by authority of its Board of Directors and said Richard D. Schneider and Donald G. Pedersen acknowledged said instrument to be the free act and deed of said corporation.

*Gregory D. Ruder*  
Notary Public, Hennepin County, Minnesota  
My Commission Expires Sept. 18, 1975

I hereby certify that I have surveyed and platted the property described on this plat as NORMAN DALE OFFICE PARK 2ND ADDITION; that this plat is a correct representation of said survey; that all distances are correctly shown on the plat in feet and decimals of a foot; that all monuments have been correctly placed in the ground as shown on the plat; that the outside boundary lines are correctly designated on the plat; and that there are no wet lands or public highways to be designated on said plat.

*Carlisle Madson*  
Carlisle Madson  
Land Surveyor, Minn. Reg. No. 4374

STATE OF MINNESOTA  
COUNTY OF HENNEPIN

The Surveyor's certificate subscribed and sworn to before me, a Notary Public, this 5th day of October A. D. 1972.

*Larry L. Hanson*  
Larry L. Hanson  
Notary Public, Hennepin County, Minnesota  
My Commission Expires March 9, 1976

The plat of NORMAN DALE OFFICE PARK 2ND ADDITION was approved and accepted by the City Council of Bloomington, Minnesota, at a regular meeting thereof held this \_\_\_\_\_ day of \_\_\_\_\_ A. D. 1972.

CITY COUNCIL OF BLOOMINGTON, MINNESOTA  
By \_\_\_\_\_ Mayor  
By \_\_\_\_\_ Manager

Pursuant to Chapter 810, Minnesota Laws of 1969, this plat has been approved this \_\_\_\_\_ day of \_\_\_\_\_ A. D. 1972.

By *Elmer J. Peterson*  
Hennepin County Surveyor