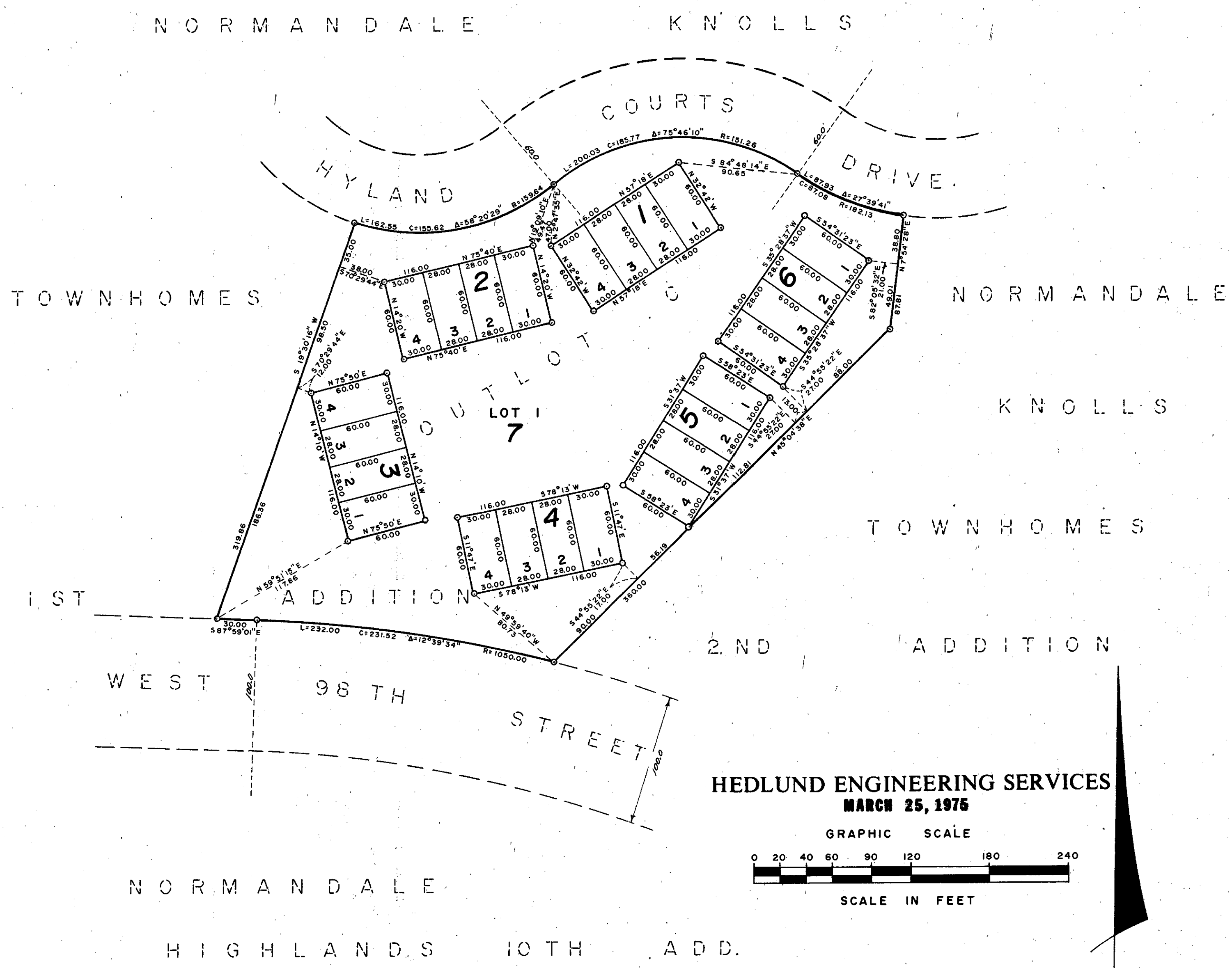


# NORMANDALE KNOLLS TOWNHOMES 3RD ADDITION

THIS SPACE RESERVED FOR BINDING



KNOW ALL MEN BY THESE PRESENTS: That Marvin H. Anderson Construction Co., a Minnesota Corporation, fee owner, and The First National Bank of Saint Paul, a United States Corporation, mortgagee, of the following described property situated in the County of Hennepin, State of Minnesota to wit:  
Outlot C, Normandale Knolls Townhomes 1st Addition, according to the plat thereof on file or of record in the office of the Registrar of Titles, in and for said County.  
Have caused the same to be surveyed and platted as NORMANDALE KNOLLS TOWNHOMES 3RD ADDITION. In witness whereof Marvin H. Anderson Construction Co., a Minnesota Corporation, has caused these presents to be signed by its proper officers and its corporate seal to be hereunto affixed this \_\_\_\_\_ day of \_\_\_\_\_ A.D. 1975, and The First National Bank of Saint Paul, a United States Corporation, has caused these presents to be signed by its proper officers and its corporate seal to be hereunto affixed this \_\_\_\_\_ day of \_\_\_\_\_ A.D. 1975.

SIGNED

Marvin H. Anderson Construction Co.	The First National Bank of Saint Paul
_____ its President	_____ its _____
Marlin D. Grant	_____ its Vice President
_____ its Vice President	Norman C. Soderman

STATE OF MINNESOTA  
COUNTY OF HENNEPIN The foregoing instrument was acknowledged before me this \_\_\_\_\_ day of \_\_\_\_\_ A.D. 1975 by Marlin D. Grant and Norman C. Soderman, President and Vice President respectively, of Marvin H. Anderson Construction Co., a Minnesota Corporation, on behalf of the corporation.

Notary Public, Hennepin County, Minnesota  
My commission expires \_\_\_\_\_

STATE OF MINNESOTA  
COUNTY OF \_\_\_\_\_ The foregoing instrument was acknowledged before me this \_\_\_\_\_ day of \_\_\_\_\_ A.D. 1975 by \_\_\_\_\_ and \_\_\_\_\_ and \_\_\_\_\_ respectively, of the First National Bank of Saint Paul, a United States Corporation, on behalf of the corporation.

Notary Public, \_\_\_\_\_ County, Minnesota  
My commission expires \_\_\_\_\_

I hereby certify that I have surveyed the property described on this plat as NORMANDALE KNOLLS TOWNHOMES 3RD ADDITION; that this plat is a correct representation of said survey; that all distances are correctly shown in feet and hundredths of a foot; that all monuments have been correctly placed in the ground as shown; that the outside boundary lines are correctly designated; and that there are no wet lands or public highways to be designated on said plat.

Calvin H. Hedlund, Land Surveyor  
Minnesota Registration No. 5942

State of Minnesota  
County of Hennepin  
The foregoing instrument was acknowledged before me this \_\_\_\_\_ day of \_\_\_\_\_ A.D. 1975 by Calvin H. Hedlund, Land Surveyor.

Notary Public, Hennepin County, Minnesota  
My commission expires \_\_\_\_\_

(Bloomington, Minnesota)  
The plat of NORMANDALE KNOLLS TOWNHOMES 3RD ADDITION was approved and accepted by the City Council of Bloomington, Minnesota, at a regular meeting thereof held on this \_\_\_\_\_ day of \_\_\_\_\_ 1975 A.D.

CITY COUNCIL OF BLOOMINGTON, MINNESOTA

By \_\_\_\_\_ Mayor By \_\_\_\_\_ Manager

FINANCE DIVISION, Hennepin County, Minnesota  
I hereby certify that there are no delinquent taxes for all years prior to \_\_\_\_\_ for land described on this plat. Dated this \_\_\_\_\_ day of \_\_\_\_\_ 1975.

Vernon T. Hoppe, Director by \_\_\_\_\_ Tax Clerk

REGISTRAR OF TITLES, Hennepin County, Minnesota  
I hereby certify that the within plat of NORMANDALE KNOLLS TOWNHOMES 3RD ADDITION was filed in this office this \_\_\_\_\_ day of \_\_\_\_\_ 1975 A.D. at \_\_\_\_\_ o'clock \_\_\_\_\_ and that the two copies were compared with the official plat and were found to be true and correct copies thereof.

Wayne A. Johnson, Registrar of Titles, by \_\_\_\_\_ Deputy

(Hennepin County Surveyor)  
Pursuant to chapter 810, Minnesota laws of 1969, this plat has been approved this \_\_\_\_\_ day of \_\_\_\_\_ 1975 A.D.

By \_\_\_\_\_  
Alver R. Freeman  
Hennepin County Surveyor

o- Denotes iron monument  
All bearings are assumed