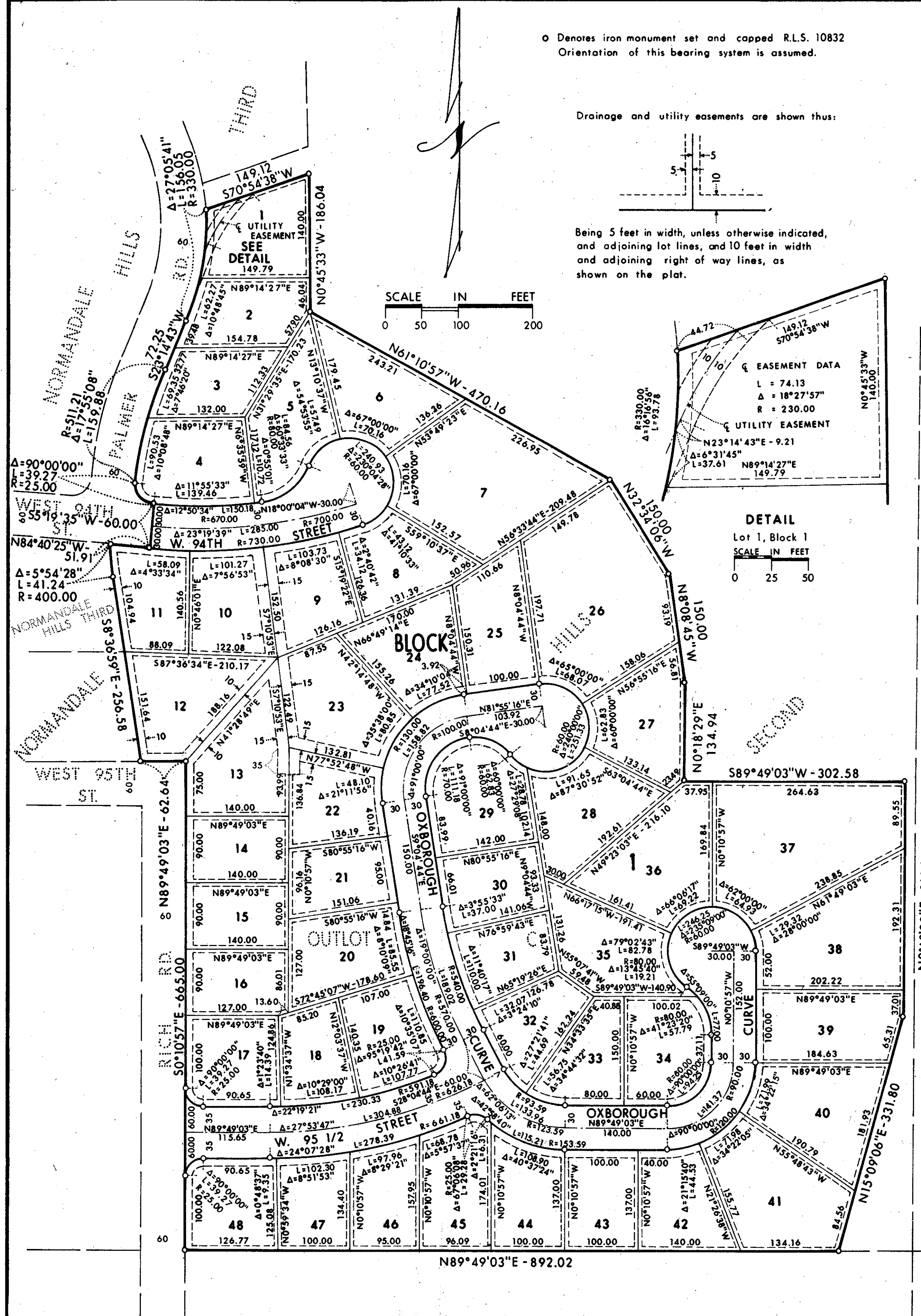


# NORMANDALE HILLS FOURTH



O Denotes iron monument set and capped R.L.S. 10832  
Orientation of this bearing system is assumed.

Drainage and utility easements are shown thus:

Being 5 feet in width, unless otherwise indicated, and adjoining lot lines, and 10 feet in width and adjoining right of way lines, as shown on the plat.

SCALE IN FEET  
0 50 100 200

DETAIL  
Lot 1, Block 1  
SCALE IN FEET  
0 25 50

KNOW ALL PERSONS BY THESE PRESENTS that Coffman Realty Co., a Minnesota corporation, fee owner of the following described property;

Outlot C, Normandale Hills Second, Hennepin County, Minnesota.

has caused the same to be surveyed and platted as NORMANDALE HILLS FOURTH and does hereby donate and dedicate to the public for the public use forever the streets, curve, utility easement, and drainage and utility easements as shown on the plat. In witness whereof said Coffman Realty Co., a Minnesota corporation, has caused these presents to be signed by its proper officer and its corporate seal to be hereunto affixed this 19<sup>th</sup> day of February, 1985.

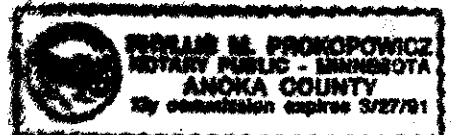
SIGNED:

COFFMAN REALTY CO.  
William D. Coffman, Jr., Its Vice-President  
William D. Coffman, Jr.

STATE OF MINNESOTA  
COUNTY OF Anoka

The foregoing instrument was acknowledged before me this 19<sup>th</sup> day of February, 1985, by William D. Coffman, Jr., Vice-President of Coffman Realty Co., a Minnesota Corporation, on behalf of the corporation.

Phyllis M. Prokopowicz  
Notary Public, Anoka County, Minnesota  
My Commission Expires March 27, 1991



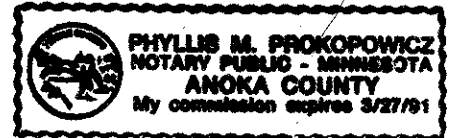
I hereby certify that I have surveyed and platted the property described on this plat as NORMANDALE HILLS FOURTH; that this plat is a correct representation of said survey; that all distances are correctly shown in feet and hundredths of a foot; that all monuments have been correctly placed in the ground as shown; that the outside boundary lines are correctly designated on the plat; and that there are no wet lands to be designated on said plat.

Ron Murphy  
Ron Murphy, Licensed Land Surveyor  
Minnesota License No. 10832

STATE OF MINNESOTA  
COUNTY OF ANOKA

The Surveyor's Certificate was acknowledged before me, a Notary Public, this 11<sup>th</sup> day of FEBRUARY, 1985, by Ron Murphy, Land Surveyor.

Phyllis M. Prokopowicz  
Notary Public, Anoka County, Minnesota  
My Commission Expires March 27, 1991



BLOOMINGTON, MINNESOTA

This plat of NORMANDALE HILLS FOURTH was approved and accepted by the City Council of the City of Bloomington, Minnesota, at a regular meeting thereof held this \_\_\_\_\_ day of \_\_\_\_\_, 19\_\_\_\_. If applicable, the written comments and recommendations of the Commissioner of Transportation and the County Highway Engineer have been received by the City or the prescribed 30 day period has elapsed without receipt of such comments and recommendations, as provided by Minnesota Statutes, Section 505.03, Subdivision 2.

By \_\_\_\_\_, Mayor  
James H. Lindau  
By \_\_\_\_\_, Manager  
John C. Pidgeon

PROPERTY TAXATION DEPARTMENT, HENNEPIN COUNTY, MINNESOTA

I hereby certify that taxes payable in \_\_\_\_\_ and prior years have been paid for land described on this plat. Dated this \_\_\_\_\_ day of \_\_\_\_\_, 19\_\_\_\_.

\_\_\_\_\_, Director  
By \_\_\_\_\_  
Tax Clerk

SURVEY DIVISION, HENNEPIN COUNTY, MINNESOTA

Pursuant to Chapter 810, Minnesota Laws of 1969, this plat has been approved this \_\_\_\_\_ day of \_\_\_\_\_, A.D. 19\_\_\_\_.

Robert L. Bakka, Hennepin County Surveyor  
By \_\_\_\_\_

COUNTY RECORDER, HENNEPIN COUNTY, MINNESOTA

I hereby certify that the within plat of NORMANDALE HILLS FOURTH was filed in this office this \_\_\_\_\_ day of \_\_\_\_\_, 19\_\_\_\_, at \_\_\_\_\_ o'clock \_\_\_\_\_ M.

R. Dan Carlson, County Recorder  
By \_\_\_\_\_  
Deputy