

# NORMAN POINTE BUSINESS CENTER 3RD ADDITION

R.T. DOC. \_\_\_\_\_  
C.R. DOC. \_\_\_\_\_

KNOW ALL MEN BY THESE PRESENTS: That Duke Realty Limited Partnership, an Indiana limited partnership, fee owner of the following described property situated in the County of Hennepin, State of Minnesota, to wit:

Lot 1, Block 1, NORMAN POINTE BUSINESS CENTER 2ND ADDITION

The registered portion of said Lot 1 is described as:

That part of Lot 1, Block 1, NORMAN POINTE BUSINESS CENTER 2ND ADDITION, lying Westerly of the Westerly line of the plat of PURE'S ADDITION

Has caused the same to be surveyed and platted as NORMAN POINTE BUSINESS CENTER 3RD ADDITION and does hereby donate and dedicate to the public for public use forever the easements as shown on this plat.

In witness whereof said Duke Realty Limited Partnership, an Indiana limited partnership, has caused these presents to be signed by its proper partner this 17<sup>th</sup> day of December, 2007.

DUKE REALTY LIMITED PARTNERSHIP, an Indiana limited partnership

By: Duke Realty Corporation, an Indiana corporation, its general partner

By: [Signature]

Printed: PATRICK E. MUSCIA

Title: SENIOR VICE PRESIDENT

STATE OF MINNESOTA  
COUNTY OF Hennepin

The foregoing instrument was acknowledged before me this 17<sup>th</sup> day of December, 2007, by Pat Muscia the Sen. Vice President of Duke Realty Corporation, an Indiana corporation, General Partner of Duke Realty Limited Partnership, an Indiana limited partnership, on behalf of said partnership.



Mary B. Engstrom  
Notary Public, Hennepin County, Minnesota  
My Commission expires 1/31/2010

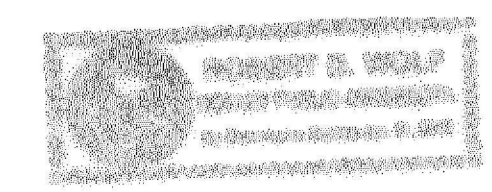
I hereby certify that this plat of NORMAN POINTE BUSINESS CENTER 3RD ADDITION is a correct representation of the boundary survey; that all mathematical data and labels are correctly designated on the plat; that all monuments depicted on the plat have been or will be correctly set within one year as indicated on the plat; that all water boundaries and wet lands as of the date of the surveyor's certification are shown and labeled on the plat; that all public ways are shown and labeled on the plat. I further certify that this plat was prepared by me or under my direct supervision and that I am a duly licensed land surveyor under the laws of the State of Minnesota.

[Signature]  
Kurt M. Kisch, Licensed Land Surveyor  
Minnesota License No. 23968

STATE OF MINNESOTA  
COUNTY OF Hennepin

The foregoing Surveyor's Certificate was acknowledged before me this 14<sup>th</sup> day of December, 2007, by Kurt M. Kisch, a Licensed Land Surveyor.

[Signature]  
Notary Public, Hennepin County, Minnesota  
My Commission Expires 1/31/2010



BLOOMINGTON, MINNESOTA

This plat of NORMAN POINTE BUSINESS CENTER 3RD ADDITION was approved and accepted by the City Council of Bloomington, Minnesota at a regular meeting thereof held this \_\_\_\_\_ day of \_\_\_\_\_, 20\_\_\_\_. If applicable, the written comments and recommendations of the Commissioner of Transportation and the County Highway Engineer have been received by the City or the prescribed 30 day period has elapsed without receipt of such comments and recommendations, as provided by Minnesota Statutes, Section 505.03, Subd. 2.

CITY COUNCIL OF BLOOMINGTON, MINNESOTA

By \_\_\_\_\_ Mayor

By \_\_\_\_\_ City Manager

TAXPAYER SERVICES DEPARTMENT, HENNEPIN COUNTY, MINNESOTA

I hereby certify that taxes payable in 20\_\_\_\_ and prior years have been paid for the land described on this plat. Dated this \_\_\_\_\_ day of \_\_\_\_\_, 20\_\_\_\_.

Jill L. Alverson, Hennepin County Auditor

By \_\_\_\_\_ Deputy

SURVEY DIVISION, HENNEPIN COUNTY, MINNESOTA

Pursuant to MN. STAT. Section 383B.565 (1969), this plat has been approved this \_\_\_\_\_ day of \_\_\_\_\_, 20\_\_\_\_.

William P. Brown, Hennepin County Surveyor

By \_\_\_\_\_

REGISTRAR OF TITLES, HENNEPIN COUNTY, MINNESOTA

I hereby certify that the within plat of NORMAN POINTE BUSINESS CENTER 3RD ADDITION was filed for record in this office this \_\_\_\_\_ day of \_\_\_\_\_, 20\_\_\_\_, at \_\_\_\_\_ o'clock \_\_\_\_m.

Michael H. Cunniff, Registrar of Titles

By \_\_\_\_\_ Deputy

COUNTY RECORDER, HENNEPIN COUNTY, MINNESOTA

I hereby certify that the within plat of NORMAN POINTE BUSINESS CENTER 3RD ADDITION was filed for record in this office this \_\_\_\_\_ day of \_\_\_\_\_, 20\_\_\_\_, at \_\_\_\_\_ o'clock \_\_\_\_m.

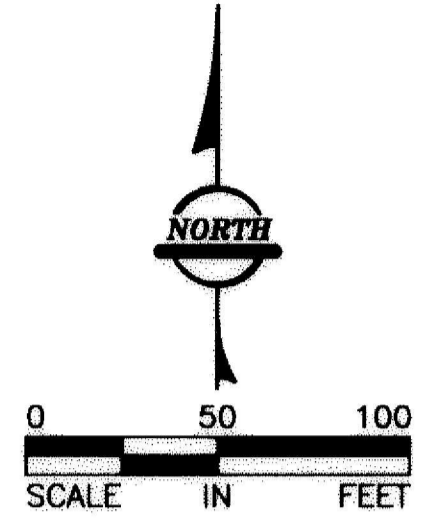
Michael H. Cunniff, County Recorder

By \_\_\_\_\_ Deputy

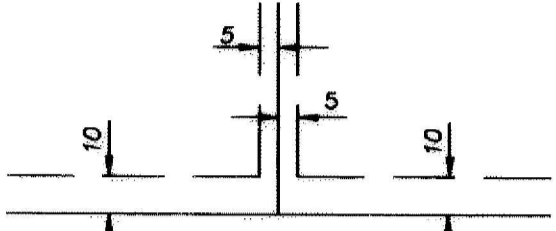


# NORMAN POINTE BUSINESS CENTER 3RD ADDITION

R.T. DOC. \_\_\_\_\_  
C.R. DOC. \_\_\_\_\_



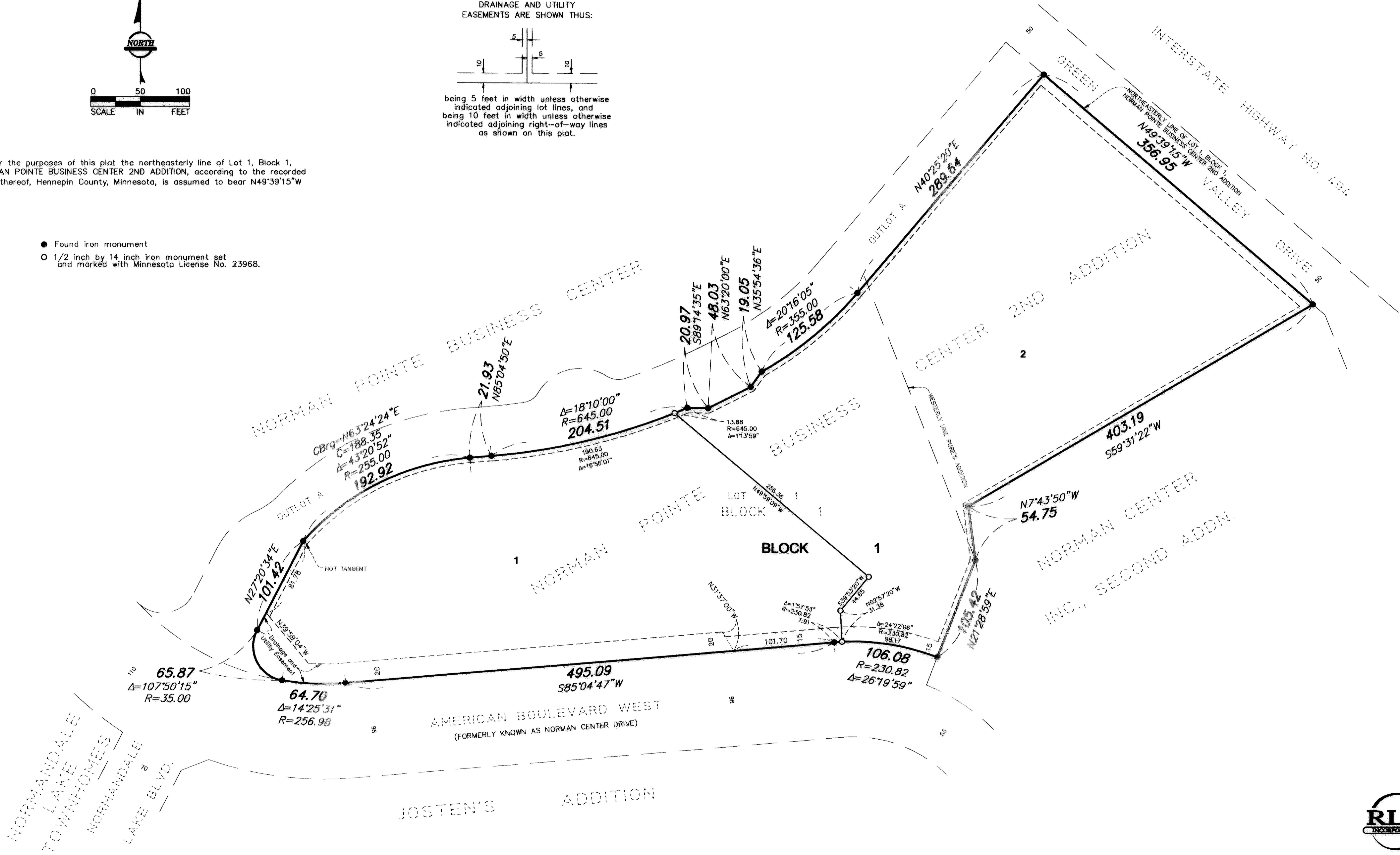
DRAINAGE AND UTILITY  
EASEMENTS ARE SHOWN THUS:



being 5 feet in width unless otherwise indicated adjoining lot lines, and being 10 feet in width unless otherwise indicated adjoining right-of-way lines as shown on this plat.

For the purposes of this plat the northeasterly line of Lot 1, Block 1, NORMAN POINTE BUSINESS CENTER 2ND ADDITION, according to the recorded plat thereof, Hennepin County, Minnesota, is assumed to bear N49°39'15"W

- Found iron monument
- 1/2 inch by 14 inch iron monument set and marked with Minnesota License No. 23968.



NORMAN DALE  
LAKE  
TOWNHOMES  
NORMAN DALE  
LAKE BLVD.

JOSTEN'S  
ADDITION

AMERICAN BOULEVARD WEST  
(FORMERLY KNOWN AS NORMAN CENTER DRIVE)

NORMAN CENTER  
INC., SECOND ADDN.



RLK INCORPORATED