

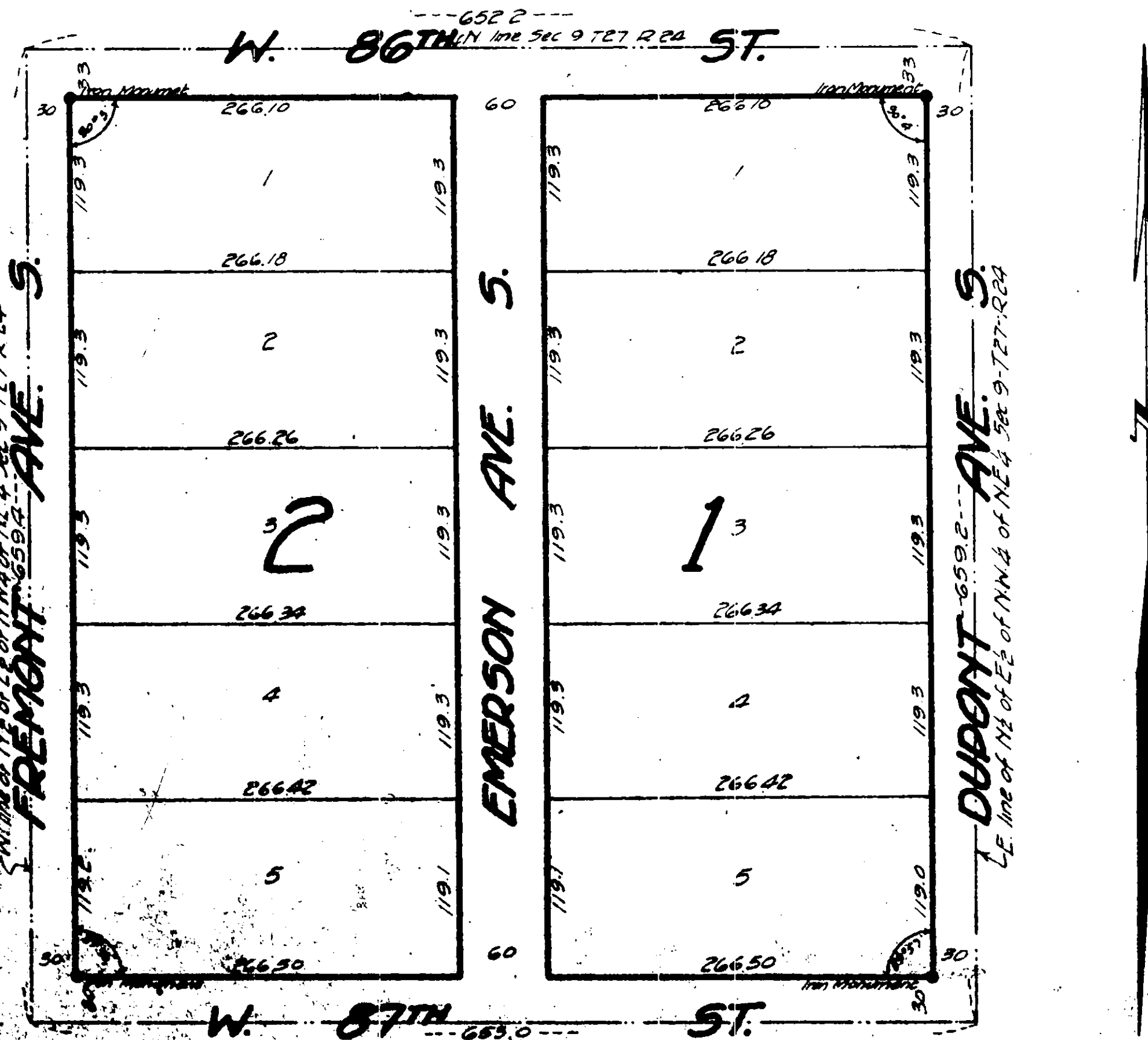
-100 73167

MURPHY BROTHERS FIRST ADDITION

TO HENNEPIN COUNTY MINN

Scale 1"=80'

W. J. Murphy Surveyor



KNOW ALL MEN BY THESE PRESENTS -

That we, Dorothy M. Murphy and Joseph W. Murphy, her husband owners and proprietors, ~~and~~ ~~his wife mortgagee~~, of the following described property situate in the County of Hennepin and State of Minnesota to wit: - The North One-half (NE 1/2) of the East One-half (E 1/2) of the Northwest Quarter (NW 1/4) of the Northeast Quarter (NE 1/4) of Section Nine (Sec 9) Township Twenty seven (T 27) Range Twenty four (R 24) West of the Fourth (4th) Principal Meridian, have caused the same to be surveyed and platted as "Murphy Brothers First Addition to Hennepin County Minn." and do hereby donate and dedicate to the public use forever the Streets and Avenues as shown in the annexed plat.

In witness whereof we have hereunto set our hands and seals this 28th day of April A.D. 1925

In presence of

Joseph W. Murphy
Dorothy M. Murphy

Dorothy M. Murphy
Joseph W. Murphy

State of Minnesota }
 County of Hennepin } ss. On this 28th day of April A.D. 1925, before me a Notary Public within and for said County and State personally appeared Dorothy M. Murphy and Joseph W. Murphy, her husband ~~and~~ ~~and~~ to me personally known to be the persons described in and who executed the foregoing instrument and they acknowledged that they executed the same as their own free act and deed.

Elmer J. Murphy

Notary Public Hennepin County
My Commission expires

ELMER J. MURPHY
Notary Public, Hennepin County, Minn.
My commission expires Nov. 22, 1926.

State of Minnesota }
 County of Hennepin } I hereby certify that I have surveyed and platted the property described on this plat as "Murphy Brothers First Addition to Hennepin County Minn." that said plat is a correct representation of said survey, that all distances are correctly shown on said plat in feet and decimals of a foot, that the outside boundary lines are correctly designated on the plat, that iron monuments for guidance of future surveys have been correctly placed in the ground as shown on the plat, that the topography of the land is correctly shown on the plat and that there are no wet lands or public highways to be designated on said plat other than as shown thereon.

W. J. Murphy
Surveyor

TAXES PAID AND TRANSFER ENTERED
 MAY 12 1925
 AL. P. ERICKSON, AUDITOR
 COUNTY OF HENNEPIN, MINN.
Al. P. Erickson DEPUTY

Above certificate subscribed and sworn before me this 28th day of April A.D. 1925
Al. P. Erickson
 Notary Public

Elmer J. Murphy

Notary Public Hennepin County
My Commission expires

ELMER J. MURPHY
Notary Public, Hennepin County, Minn.
My commission expires Nov. 22, 1926.

Annexed plat accepted and approved by Board of County Commissioners Hennepin County at a regular meeting thereof held the 14th day of May A.D. 1925.

Al. P. Erickson
County Auditor

Al. P. Erickson
County Auditor

OK May 7-23
John W. Bluff
County Surveyor

RECORDS OF DEEDS
 Hennepin County, Minnesota
 This plat was filed in the office for record this
 28th day of April A.D. 1925 at 2 o'clock P.M.
Al. P. Erickson
 County Auditor