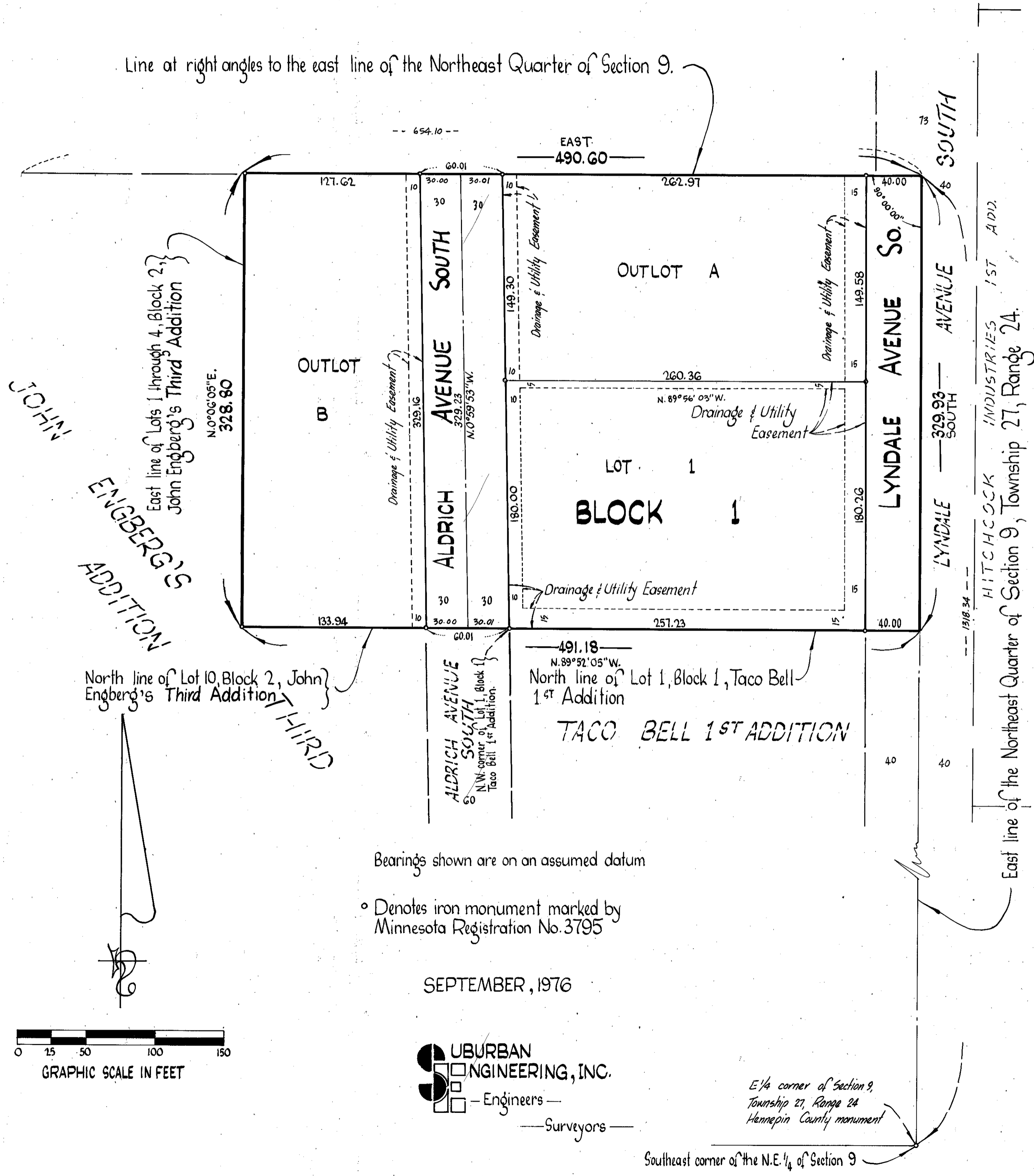


# MOTOR PARTS ADDITION

Line at right angles to the east line of the Northeast Quarter of Section 9.



KNOW ALL MEN BY THESE PRESENTS: That Motor Parts Service, Inc., a Minnesota corporation, owner and proprietor of the following described property situated in the County of Hennepin, State of Minnesota to wit: That part of the East Half of the Southeast Quarter of the Northeast Quarter of Section 9, Township 27, Range 24, lying East of the east line of Lots 1 to 4, inclusive, Block 2, John Engberg's Third Addition, according to the recorded plat thereof and lying North of the north line of Lot 10, Block 2, John Engberg's Third Addition and the same extended to the northwest corner of Lot 1, Block 1, Taco Bell 1st Addition and North of the north line of said Lot 1, Block 1, Taco Bell 1st Addition, according to the recorded plat thereof and lying South of the following described line: Commencing at a point on the east line of Southeast Quarter of the Northeast Quarter, 1318.34 feet North of the southeast corner of said Southeast Quarter of the Northeast Quarter; thence West, at a right angle, a distance of 654.1 feet and there terminating, according to the United States Government Survey;

has caused the same to be surveyed and platted as MOTOR PARTS ADDITION and do hereby donate and dedicate to the public for public use forever the Avenues and drainage and utility easements as shown on this plat. In witness whereof said Motor Parts Service, Inc. has caused these presents to be signed by its proper officer and its corporate seal to be hereunto affixed this 15th day of Sept., 1976.

MOTOR PARTS SERVICE, INC.  
*Dewey E. Johnson*  
Dewey E. Johnson, President

STATE OF MINNESOTA The foregoing instrument was acknowledged before me this 21st day of September, 1976 by Dewey E. Johnson, President of Motor Parts Service, Inc., a Minnesota corporation on behalf of the corporation.

*Marietta L. Zuehlke*  
Notary Public, Anoka County, Minnesota  
My Commission Expires \_\_\_\_\_  
MARIETTA L. ZUEHLKE  
Notary Public, Anoka County, Minn.  
My Commission Expires: April 19, 1977

I hereby certify that I have surveyed and platted the property described on this plat as MOTOR PARTS ADDITION; that this plat is a correct representation of said survey; that all distances are correctly shown on the plat in feet and hundredths of a foot; that the monuments have been correctly placed in the ground as shown on said plat; that the outside boundary lines are correctly designated on said plat and that there are no wet lands to be designated on said plat.

*E. A. Rathbun*  
E. A. Rathbun, Land Surveyor  
Minnesota Registration No. 3795

STATE OF MINNESOTA The foregoing instrument was acknowledged before me this 17th day of September, 1976 by COUNTY OF ANOKA E. A. Rathbun, Land Surveyor.

*Marietta L. Zuehlke*  
Notary Public, Anoka County, Minnesota  
My Commission Expires \_\_\_\_\_  
MARIETTA L. ZUEHLKE  
Notary Public, Anoka County, Minn.  
My Commission Expires: April 19, 1977

BLOOMINGTON, MINNESOTA

This plat of MOTOR PARTS ADDITION was approved and accepted by the City Council of the City of Bloomington at a regular meeting thereof held this \_\_\_\_\_ day of \_\_\_\_\_, 1976.

CITY COUNCIL OF BLOOMINGTON, MINNESOTA  
By \_\_\_\_\_ Mayor  
By \_\_\_\_\_ Manager

FINANCE DIVISION, HENNEPIN COUNTY, MINNESOTA

I hereby certify that there are no delinquent taxes for all years prior to \_\_\_\_\_ for land described on this plat. Dated this \_\_\_\_\_ day of \_\_\_\_\_, 1976.

Vernon T. Hoppe, Director  
By \_\_\_\_\_ Tax Clerk

HENNEPIN COUNTY SURVEYOR

Pursuant to Chapter 810, Minnesota Laws of 1969, this plat has been approved this \_\_\_\_\_ day of \_\_\_\_\_, 1976.

By \_\_\_\_\_  
Alver R. Freeman, Hennepin County Surveyor

COUNTY RECORDER, HENNEPIN COUNTY, MINNESOTA

I hereby certify that the within plat of MOTOR PARTS ADDITION was filed for record in this office this \_\_\_\_\_ day of \_\_\_\_\_ 1976 at \_\_\_\_\_ o'clock \_\_\_\_\_ M. and was recorded in Book \_\_\_\_\_ of plats, Page \_\_\_\_\_ and that the two copies were compared with the official plat and were found to be true and correct copies thereof.

Wayne A. Johnson, County Recorder  
By \_\_\_\_\_ Deputy

THIS SPACE RESERVED FOR BINDING