

MINNEAPOLIS, NORTHFIELD AND SOUTHERN RAILWAY 2ND ADDITION

KNOW ALL MEN BY THESE PRESENTS: That Minneapolis, Northfield and Southern Railway, a South Dakota corporation, owner and proprietor of the following described land situated in the County of Hennepin, State of Minnesota, to wit:

Lots 1 and 2, Block 1, MINNEAPOLIS, NORTHFIELD AND SOUTHERN RAILWAY 1ST ADDITION, according to the plat thereof on file and of record in the office of the Registrar of Titles.

Has caused the same to be surveyed and platted as MINNEAPOLIS, NORTHFIELD AND SOUTHERN RAILWAY 2ND ADDITION and does hereby donate and dedicate to the public, for public use forever, the avenues, streets and easements for utility and drainage purposes as shown on said plat. In witness whereof Minneapolis, Northfield and Southern Railway, a South Dakota corporation, has caused these presents to be signed by its proper officers and its corporate seal to be hereunto affixed this 5th day of January A.D., 1978

MINNEAPOLIS, NORTHFIELD AND SOUTHERN RAILWAY
C. J. [Signature] its PRESIDENT
H. J. Nelson its SECRETARY

STATE OF MINNESOTA
COUNTY OF HENNEPIN
The foregoing instrument was acknowledged before me this 5th day of January A.D., 1978 by D. J. Boyer and R. A. Nelson, of Minneapolis, Northfield and Southern Railway, a South Dakota corporation, on behalf of said corporation.

Notary Public, HENNEPIN County, Minnesota.
My Commission expires MARCH 14 1981

I hereby certify that I have surveyed and platted the property described on this plat as MINNEAPOLIS, NORTHFIELD AND SOUTHERN RAILWAY 2ND ADDITION; that this plat is a correct representation of said survey; that all distances are correctly shown on said plat in feet and hundredths of a foot; that all monuments have been correctly placed in the ground as shown on said plat; that the outside boundary lines are correctly designated on said plat; and that there are no wet lands to be designated on said plat.

Ronald A. Swanson
Ronald A. Swanson, Land Surveyor
Minnesota Registration No. 10183

STATE OF MINNESOTA
COUNTY OF SCOTT

The foregoing instrument was acknowledged before me this 21 day of Dec, 1978 by Ronald A. Swanson, Land Surveyor.

Delora M. Clemmer
Notary Public, Scott County, Minnesota.
My Commission expires _____

The plat of MINNEAPOLIS, NORTHFIELD AND SOUTHERN RAILWAY 2ND ADDITION was approved and accepted by the City of Bloomington, Minnesota, at a regular meeting thereof, held this _____ day of _____ A.D., 19__.

CITY COUNCIL OF BLOOMINGTON, MINNESOTA

By: _____ Mayor By: _____ Manager

FINANCE DIVISION, Hennepin County, Minnesota

I hereby certify that there are no delinquent taxes for all years prior to 19__ for land described on this plat. Dated this _____ day of _____, 19__.

Vernon T. Hoppe, Director By: _____ Tax Clerk

SURVEY DIVISION, Hennepin County, Minnesota

Pursuant to Chapter 810 Minnesota Laws of 1969, this plat has been approved this _____ day of _____, 19__.

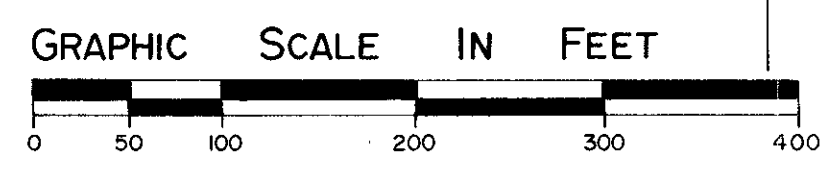
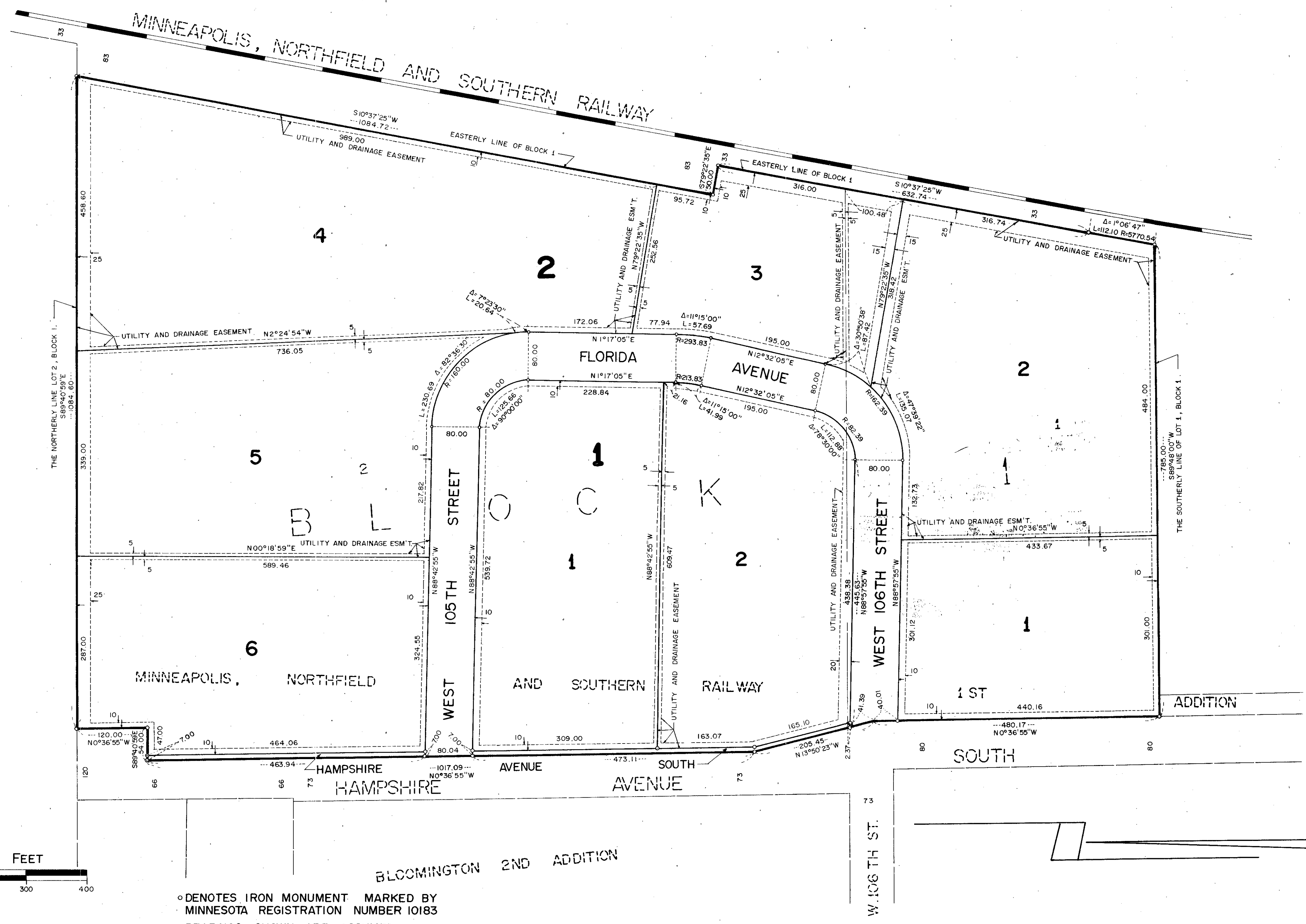
Alver R. Freeman, Hennepin County Surveyor By: _____

REGISTRAR OF TITLES, Hennepin County, Minnesota

I hereby certify that the within plat of MINNEAPOLIS, NORTHFIELD AND SOUTHERN RAILWAY 2ND ADDITION was filed for record in this office this _____ day of _____, 19__, at _____ o'clock _____ M.

Wayne A. Johnson, Registrar of Titles By: _____ Deputy

MINNEAPOLIS , NORTHFIELD AND SOUTHERN RAILWAY 2ND ADDITION



○ DENOTES IRON MONUMENT MARKED BY MINNESOTA REGISTRATION NUMBER 10183 BEARINGS SHOWN ARE ASSUMED.

BLOOMINGTON 2ND ADDITION