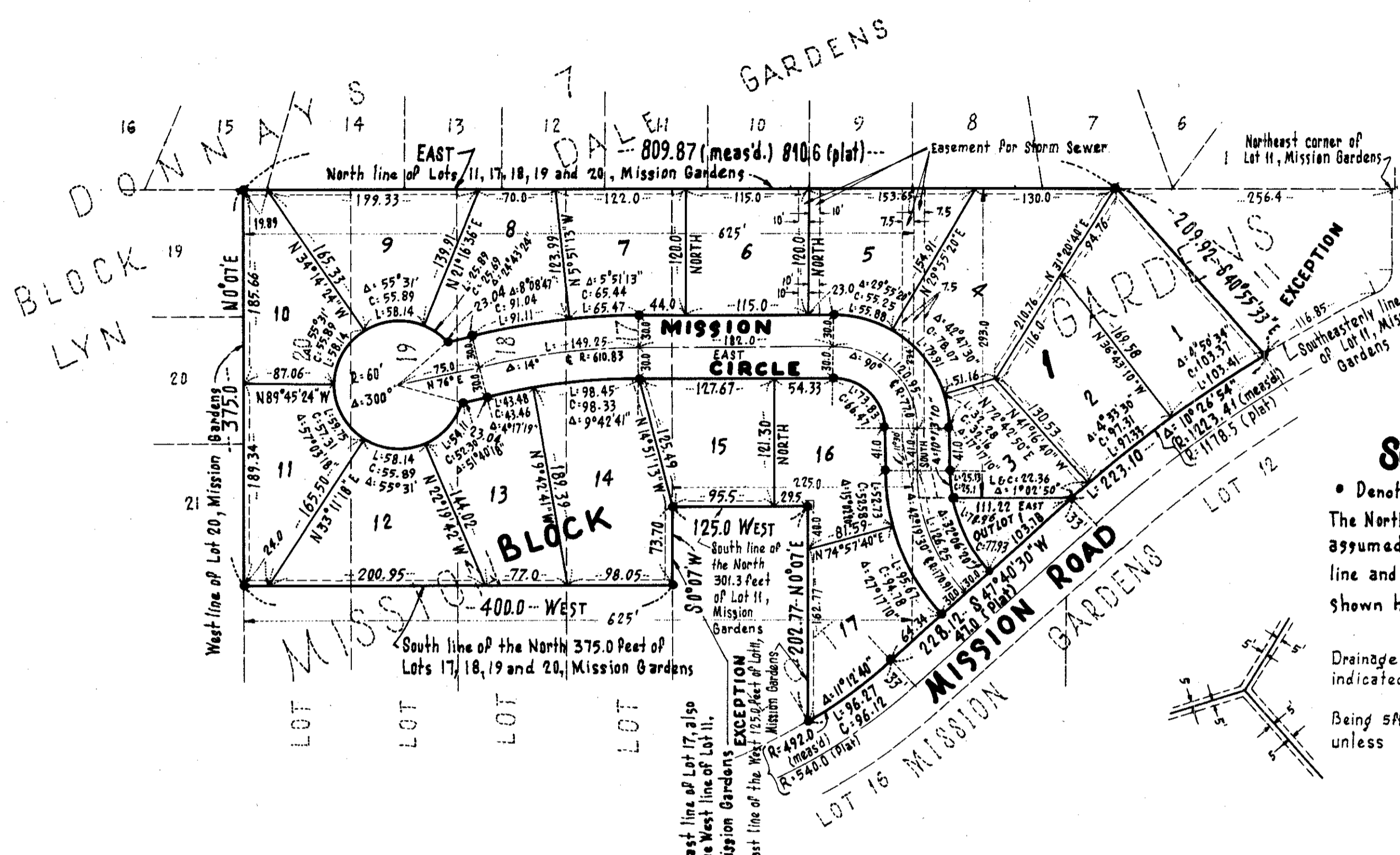


McDONALD'S MISSION GARDENS

CITY OF BLOOMINGTON HENNEPIN COUNTY, MINNESOTA



KNOW ALL MEN BY THESE PRESENTS: That R.F. McDonald Realty, Inc., a Minnesota corporation, owner and proprietor, and The Knutson Company, a Minnesota corporation, mortgagee, of the following described property situate in the County of Hennepin, State of Minnesota, to wit: The North 375 feet of Lots 17, 18, 19, and 20 and all of Lot 11, "Mission Gardens, Hennepin County, Minnesota", except that part of Lot 11, lying Northeasterly of a line commencing at a point in the North line of said Lot distant 256.4 feet West of the Northeast corner thereof; thence South 40° 55' 33" East to the Southeast line of said Lot. For purposes of this description the North line of said Lot 11 is deemed to be a due East and West line; and also except the West 125 feet of that part of Lot 11 lying South of the North 301.3 feet thereof, and also except that part of Lot 11 lying South of the North 293.0 feet and East of the West 225.0 feet thereof; also the City of Bloomington, a Municipal corporation, of the State of Minnesota, owner and proprietor of the following described property situate in the County of Hennepin, State of Minnesota, to wit: That part of Lot 11, "Mission Gardens, Hennepin County, Minnesota" lying South of the North 293.0 feet and East of the West 225.0 feet thereof; all according to the plat thereof on file and of record in the Office of the Registrar of Titles in and for said Hennepin County. Have caused the same to be surveyed and platted as McDONALD'S MISSION GARDENS and do hereby donate and dedicate to the public for the public use forever the circle as shown on the annexed plat and also the drainage, utility and storm sewer easements as shown on the annexed plat. In witness whereof, said R.F. McDonald Realty, Inc., a Minnesota corporation has caused these presents to be signed by its proper officer and its corporate seal to be hereunto affixed this _____ day of _____ A.D. 1964. Also, The Knutson Company, a Minnesota corporation, has caused these presents to be signed by its proper officers and its corporate seal to be hereunto affixed this _____ day of _____ A.D. 1964. Also, City of Bloomington, a Municipal corporation of the State of Minnesota, has caused these presents to be signed by its officers and its corporate seal to be hereunto affixed this _____ day of _____ A.D. 1964.

In presence of :

and _____
by _____ Its President
The Knutson Company
by _____ Its Assistant Vice-President
by _____ Its Assistant Vice-President
City of Bloomington
by Donald R. Haselberg Its _____
by _____ Its _____

Scale: 1" = 100'

• Denotes Iron Monument
The North line of Mission Gardens is assumed to be a due East and West line and is the basis for the bearings shown hereon.

Drainage and utility easements are indicated thus:
Being 5 ft. on each side of the Lot line unless otherwise shown.

State of Minnesota) On this _____ day of _____ A.D. 1964, before me, a Notary Public, within and for County of Hennepin) said County and State, personally appeared R.F. McDonald, to me personally known, who being by me duly sworn did say that he is the President of R. F. McDonald Realty, Inc., the Corporation named in the foregoing instrument; that the seal affixed to said instrument is the corporate seal of said corporation; and that said instrument was signed and sealed in behalf of said corporation by authority of its board of directors and said R. F. McDonald acknowledges said instrument to be the free act and deed of said corporation.

Notary Public, Hennepin County, Minnesota
My Commission expires _____

The plat of McDONALD'S MISSION GARDENS was approved and accepted by the City Council of Bloomington, Minnesota, at a regular meeting thereof held on this _____ day of _____ A.D. 1964.

CITY COUNCIL OF BLOOMINGTON, MINNESOTA
by Donald R. Haselberg Its Mayor
by _____ Its Clerk

The boundaries of this plat and the boundaries of the block therein have been mathematically checked and approved. No determination has been made to ascertain that the legal description agrees with said plat.

Dated this _____ day of _____ A.D. 1964.

by Howard W. Perkins, County Surveyor, Hennepin County, Minnesota

State of Minnesota) On this _____ day of _____ A.D. 1964, before me, a Notary Public, within and for said County and State, personally appeared Emanuel E. Machacek and Maurice F. Wagner, to me personally known, who being by me duly sworn did say that they are respectively the Assistant Vice-President and Assistant Vice-President of The Knutson Company, the corporation named in the foregoing instrument; that the seal affixed to said instrument is the corporate seal of said corporation; and that said instrument was signed and sealed in behalf of said corporation by authority of its board of directors and said Emanuel E. Machacek and Maurice F. Wagner acknowledge said instrument to be the free act and deed of said corporation.

Notary Public, Hennepin County, Minnesota
My Commission expires _____

State of Minnesota) On this _____ day of _____ A.D. 1964, before me, a Notary Public, within and for said County and State, personally appeared _____ and _____ of City of Bloomington, the corporation named in the foregoing instrument; that the seal affixed to said instrument is the corporate seal of said corporation; and that said instrument was signed and sealed in behalf of said corporation by authority of the City Council of Bloomington and said _____ and _____ acknowledge said instrument to be the free act and deed of said corporation.

Notary Public, Hennepin County, Minnesota
My Commission expires _____

I hereby certify that I have surveyed and platted the land described in the dedication on the plat as McDONALD'S MISSION GARDENS; that this plat is a correct representation of said survey; that all distances are correctly shown on said plat in figures denoting feet and decimals of a foot; that the monuments for the guidance of future surveys have been correctly placed in the ground as shown on said plat; that the outside boundaries of the plat are correctly designated on said plat; and that there are no wet lands or public highways to be designated on said plat other than are shown thereon.

Harold Johnson
Harold S. Johnson
Land Surveyor Minn. Reg. No. 5065

State of Minnesota) County of Hennepin) The above certificate was subscribed and sworn to before me, a Notary Public, within and for said County and State, on this _____ day of _____ A.D., 1964.

Raymond C. Schultz
RAYMOND C. SCHULTZ
Notary Public, Hennepin County, Minn.
My Commission Expires Aug. 13, 1968

