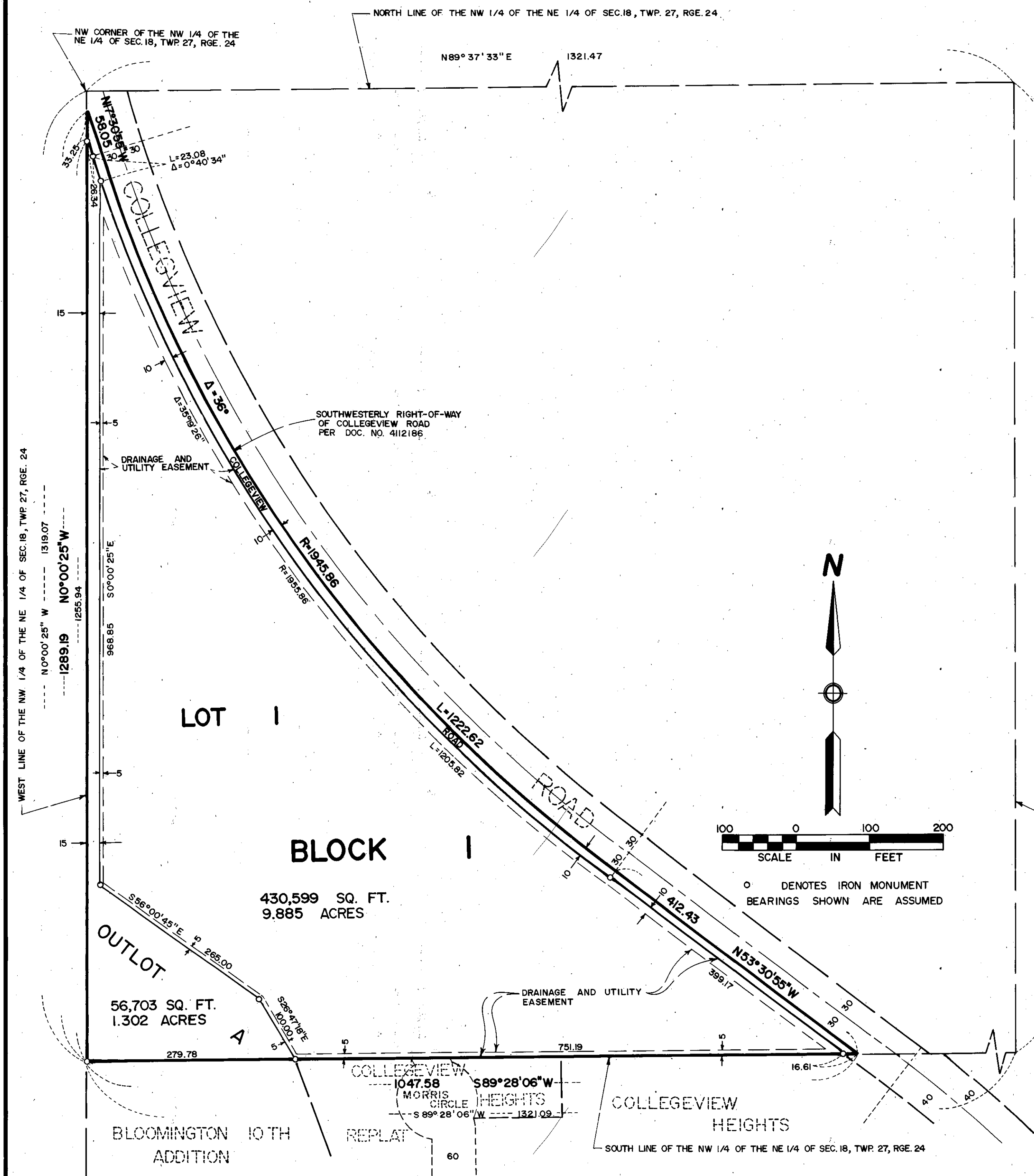


# MARSH PARK

BINDING  
FOR  
RESERVED  
SPACE  
THIS



KNOW ALL MEN BY THESE PRESENTS: That Marsh Park Co., a partnership, owner and proprietor, and First National Bank of Minneapolis, a National Banking Association Corporation, mortgagee of the following described property situated in the County of Hennepin, State of Minnesota, to wit:

That part of the Northwest 1/4 of the Northeast 1/4 of Section 18, Township 27 North Range 24, West of the Fourth Principal Meridian, lying Southwesterly of the Southwesterly right of way line of Collegeview Road.

Have caused the same to be surveyed and platted as MARSH PARK, and do hereby donate and dedicate to the public for public use forever the road and drainage and utility easements as shown on said plat.

In witness whereof said Marsh Park Co., a partnership, has caused these presents to be signed by Melvin C. Gittleman, a partner, in behalf of said Partnership by authority of the Partnership this 14<sup>th</sup> day of July 1978.

And in witness whereof said First National Bank of Minneapolis, a National Banking Association Corporation, has caused these presents to be signed by its proper officers and its corporate seal to be hereunto affixed this 14 day of JULY 1978.

SIGNED: Melvin C. Gittleman MARSH PARK CO.

SIGNED: Richard L. Peterson its Assistant Vice President and Paul S. Bauer its Commercial Banking Officer FIRST NATIONAL BANK OF MINNEAPOLIS

STATE OF MINNESOTA COUNTY OF \_\_\_\_\_

The foregoing instrument was acknowledged before me this 14<sup>th</sup> day of July 1978 by Melvin C. Gittleman, a partner of said Marsh Park Co., a partnership, on behalf of said Partnership by authority of the Partnership

Donald W. Anderson  
Notary Public, Hennepin County, Minnesota  
My Commission Expires Jan. 10, 1980

STATE OF MINNESOTA COUNTY OF Hennepin

The foregoing instrument was acknowledged before me this 14<sup>th</sup> day of July 1978 by Richard L. Peterson its Assistant Vice President and Paul S. Bauer its Commercial Banking Officer of First National Bank of Minneapolis, a National Banking Association Corporation, on behalf of said corporation.

Mercedes Mackall  
Notary Public - Minnesota  
Hennepin County  
My Commission Expires Jan. 10, 1980

I hereby certify that I have surveyed and platted the property described on this plat as MARSH PARK; that this plat is a correct representation of said survey; that all distances are correctly shown on said plat in feet and hundredths of a foot; that all monuments have been correctly placed in the ground as shown on said plat; that the outside boundary lines are correctly designated on said plat; and that there are no wetlands to be designated on said plat.

Edward H. Sunde  
Edward H. Sunde, Land Surveyor  
Minnesota Registration No. 8612

STATE OF MINNESOTA COUNTY OF Dakota

The foregoing instrument was acknowledged before me this 12<sup>th</sup> day of July 1978 by Edward H. Sunde, Land Surveyor.

Sharon L. Flear  
Notary Public, Dakota County, Minnesota  
My Commission Expires January 14, 1983

BLOOMINGTON, MINNESOTA

The plat of MARSH PARK was approved and accepted by the City Council of the City of Bloomington, Minnesota at a regular meeting thereof, held this \_\_\_\_\_ day of \_\_\_\_\_ 197\_\_\_\_\_.

CITY COUNCIL OF BLOOMINGTON, MINNESOTA

BY: \_\_\_\_\_ its Mayor

BY: \_\_\_\_\_ its Manager

FINANCE DIVISION, Hennepin County, Minnesota

I hereby certify that there are no delinquent taxes for all years prior to 197\_\_\_\_\_ for land described on this plat.

Dated this \_\_\_\_\_ day of \_\_\_\_\_ 197\_\_\_\_\_.

Vernon T. Hoppe, Director

SURVEY DIVISION, Hennepin County, Minnesota

BY: \_\_\_\_\_ Tax Clerk

Pursuant to Chapter 810, Minnesota Laws of 1969, this plat has been approved this \_\_\_\_\_ day of \_\_\_\_\_ 197\_\_\_\_\_.

Alver R. Freeman, Hennepin County Surveyor

COUNTY RECORDER, Hennepin County, Minnesota

BY: \_\_\_\_\_

I hereby certify that the within plat of MARSH PARK was filed for record in this office this \_\_\_\_\_ day of \_\_\_\_\_ 197\_\_\_\_\_, at \_\_\_\_\_ o'clock \_\_\_\_\_ M. and was recorded in Book \_\_\_\_\_ of Plats, Page \_\_\_\_\_ and that the two copies were compared with the official plat and were found to be true and correct copies thereof.

WAYNE A. JOHNSON, County Recorder

BY: \_\_\_\_\_ Deputy