

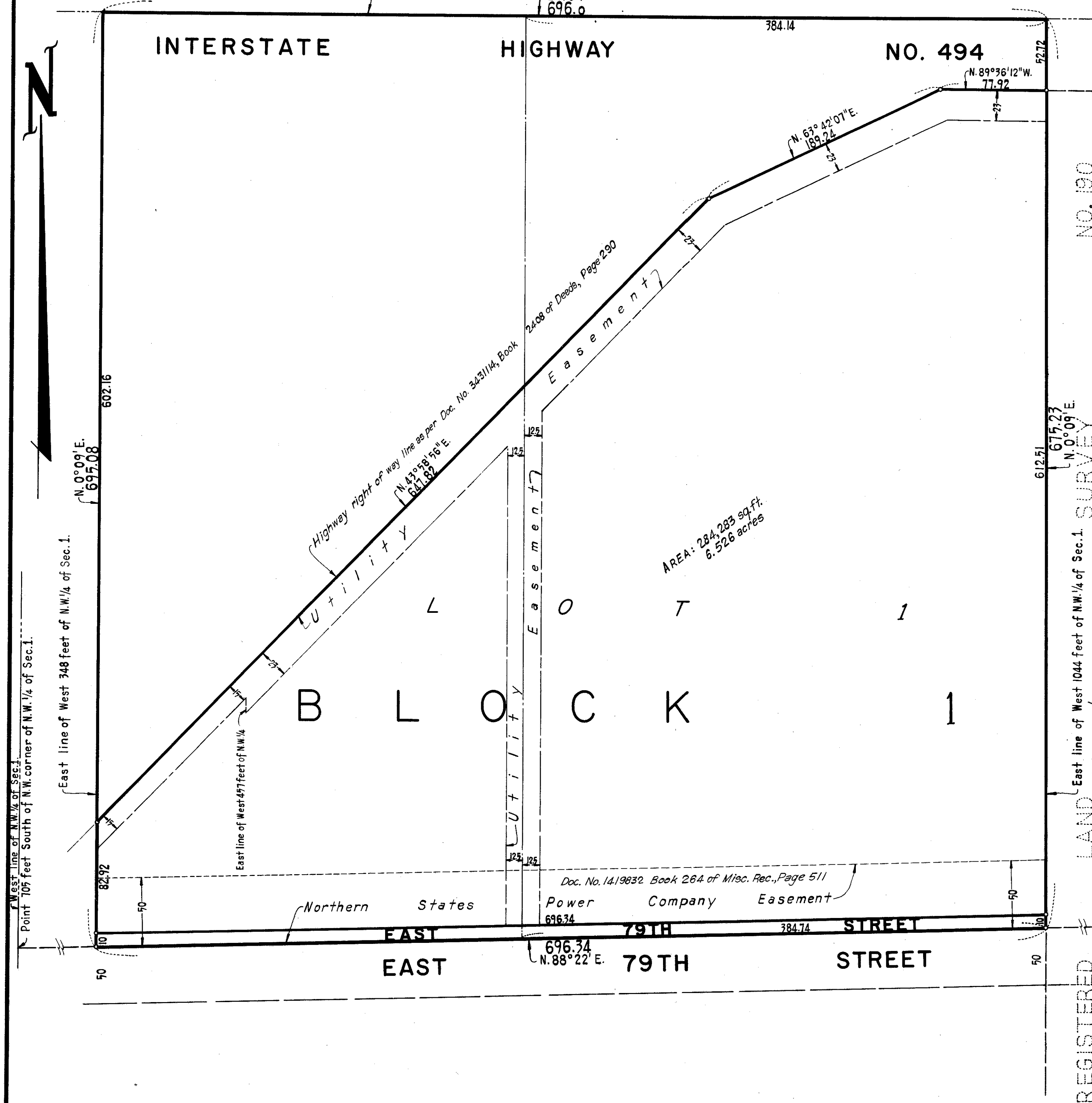
MARRIOTT ADDITION

EGAN, FIELD & NOWAK
SURVEYORS

BEARINGS SHOWN ARE ASSUMED.
O DENOTES IRON MONUMENT.

SCALE: 1 inch equals 50 feet.

North line of N.W. 1/4 of Sec. 1, T. 27, R. 24.



Know all men by these presents that Rudolph L. Schultz and Blanche Schultz, his wife, owners and proprietors, and O'Meara - Chandler Corporation, a Texas corporation, purchaser under contract for deed, and Northwestern Mutual Life Insurance Company, a Wisconsin corporation, mortgagee, of the following described property situate in the State of Minnesota and County of Hennepin, to wit: The East 696 feet of the West 1044 feet of that part of the Northwest 1/4 of Section 1, Township 27, Range 24, lying Northerly of a line running from a point on the West line of the Northwest 1/4 distant 705 feet South from the Northwest corner thereof to a point in the East line of the Northwest 1/4 distant 628.5 feet South from the Northeast corner thereof, have caused the same to be surveyed and platted as MARRIOTT ADDITION and do hereby donate and dedicate to the public for public use forever the street, highway and easements for utility purposes as shown on the plat. In witness whereof said Rudolph L. Schultz and Blanche Schultz, his wife, have hereunto set their hands and seals this 8th day of July A.D. 1970. In witness whereof said O'Meara - Chandler Corporation has caused these presents to be signed by its proper officer and its corporate seal to be hereunto affixed this 22nd day of June A.D. 1970. In witness whereof said Northwestern Mutual Life Insurance Company has caused these presents to be signed by its proper officers and its corporate seal to be hereunto affixed this 29th day of June A.D. 1970.

In presence of:-
 Signed
 As to Rudolph L. Schultz and Blanche Schultz by Rudolph L. Schultz (Seal)
 As to Kenneth W. O'Meara by Kenneth W. O'Meara president
 O'MEARA - CHANDLER CORPORATION
 As to WARREN G. FABER and GEORGE M. HIGBEE by Warren G. Faber its ASSE. MANAGER
 and George M. Higbee its ASST. SECRETARY
 THE NORTHWESTERN MUTUAL LIFE INSURANCE COMPANY

STATE OF MINNESOTA) COUNTY OF HENNEPIN) S.S. On this 8 day of July A.D. 1970, before me a Notary Public, personally appeared Rudolph L. Schultz and Blanche Schultz, his wife, to me known to be the persons described in and who executed the foregoing instrument, and they acknowledged that they executed the same as their own free act and deed.
 Notary Public, Hennepin County, Minnesota
 My commission expires June 19, 1975

STATE OF Texas) COUNTY OF Harris) S.S. On this 23rd day of June A.D. 1970, before me a Notary Public, personally appeared Kenneth W. O'Meara, to me personally known who by me duly sworn did say that he is president of O'Meara - Chandler Corporation, the corporation named in the foregoing instrument, that the corporate seal affixed to said instrument is the corporate seal of said corporation and that said instrument was signed and sealed in behalf of said corporation by authority of its Board of Directors and said Kenneth W. O'Meara acknowledged said instrument to be the free act and deed of said corporation.
 Notary Public, Harris County, Texas
 My commission expires 6-1-71

STATE OF Wisconsin) COUNTY OF MILWAUKEE) S.S. On this 29th day of June A.D. 1970, before me a Notary Public, personally appeared WARREN G. FABER and GEORGE M. HIGBEE, to me personally known who by me each duly sworn did say that they are respectively ASSE. MANAGER and ASST. SECRETARY of Northwestern Mutual Life Insurance Company, the corporation named in the foregoing instrument, that the corporate seal affixed to said instrument is the corporate seal of said corporation and that said instrument was signed and sealed in behalf of said corporation by authority of its Board of Directors and said WARREN G. FABER and GEORGE M. HIGBEE acknowledged said instrument to be the free act and deed of said corporation.
 Notary Public, MILWAUKEE CO., WIS.
 My commission expires JANUARY 3, 1974

I hereby certify that I have surveyed and platted the property described on this plat as MARRIOTT ADDITION; that this plat is a correct representation of said survey; that all distances are correctly shown on the plat in feet and decimals of a foot; that all monuments have been correctly placed in the ground as shown; that the outside boundary lines are correctly designated on the plat and that there are no wet lands to be designated on said plat.
 Surveyor - Minnesota Registration No. 9053

STATE OF MINNESOTA) COUNTY OF HENNEPIN) S.S. The surveyor's certificate was subscribed and sworn to before me, a Notary Public, this 10th day of April A.D. 1970.
 CHRIS KUNTZ - Notary Public, Hennepin County, Minnesota
 My commission expires March 4, 1975.

This plat of MARRIOTT ADDITION was approved and accepted by the City Council of Bloomington, Minnesota at a regular meeting thereof held this 30th day of DECEMBER A.D. 1968.
 CITY COUNCIL OF BLOOMINGTON, MINNESOTA
 by James M. Berg mayor
 by John J. Berg manager

The boundaries of this plat and the boundaries of the block therein have been mathematically checked and approved. No determination has been made to ascertain that the legal description agrees with said plat. Dated this _____ day of _____ A.D. 1970.
 by Elmer J. Peterson - Hennepin County Surveyor

REGISTERED LAND SURVEY