

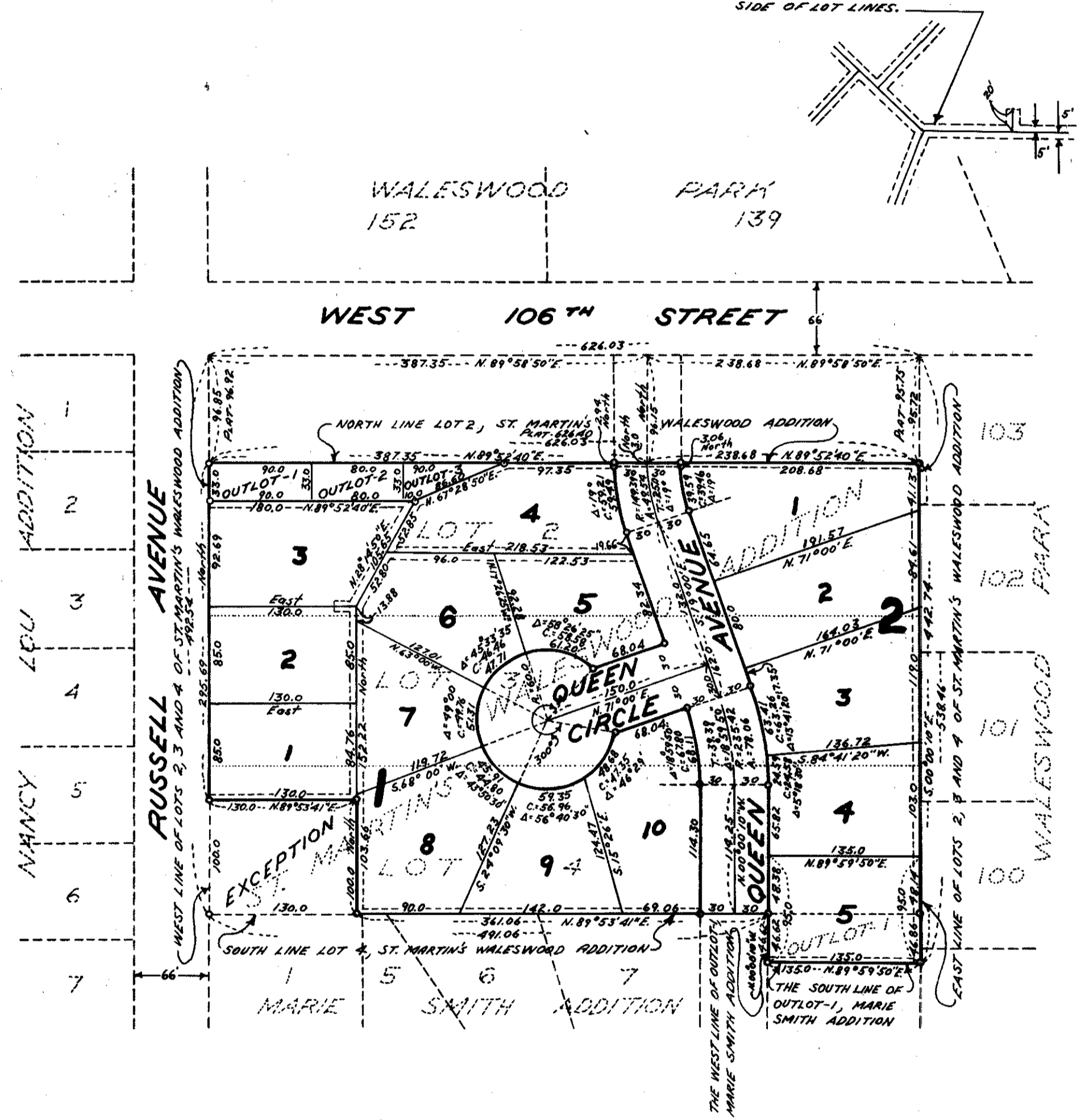
# MARIE SMITH SECOND ADDITION

CITY OF BLOOMINGTON  
HENNEPIN COUNTY, MINNESOTA

S-15

"0" DENOTE IRON MONUMENTS  
BEARINGS SHOWN ARE ASSUMED

DRAINAGE AND UTILITY EASEMENTS ARE  
DENOTED THUS, BEING 5 FEET ON EACH  
SIDE OF LOT LINES.



KNOW ALL MEN BY THESE PRESENTS: that George R. Butler Construction Co., a Minnesota Corporation, as owner and proprietor of the following described property situated in the State of Minnesota and County of Hennepin to wit: Outlot 1 Marie Smith Addition according to the plat thereof on file and of record in the office of the Registrar of Titles in and for said Hennepin County, also Lots 2, 3, and 4 St. Martin's Waleswood Addition except the south 100 feet of the west 130 feet of said lot 4, according to the plat thereof on file or of record in the office of the Registrar of Deeds in and for said Hennepin County,

Has caused the same to be surveyed and platted as MARIE SMITH SECOND ADDITION and does hereby donate and dedicate to the public for the public use forever the avenue and circle and also the easements for utility and drainage purposes as shown on the annexed plat. In witness whereof George R. Butler Construction Co. has caused these presents to be signed by its proper officers and its corporate seal to be hereunto affixed this \_\_\_\_\_ day of \_\_\_\_\_ A.D. 1965.

In the Presence of: \_\_\_\_\_ Signed \_\_\_\_\_  
 GEORGE R. BUTLER CONSTRUCTION CO.  
 \_\_\_\_\_ its President  
 George R. Butler  
 \_\_\_\_\_ its Secretary  
 Mildred B. Butler

State of Minnesota  
County of Hennepin On this \_\_\_\_\_ day of \_\_\_\_\_ A. D. 1965, before me a Notary Public, within and for said County and State, personally appeared George R. Butler and Mildred B. Butler, to me personally known, who being by me each duly sworn, did say that they are respectively the President and Secretary of George R. Butler Construction Co., the corporation named in the foregoing instrument, that the seal affixed to said instrument is the corporate seal of said corporation, that said instrument was signed and sealed in behalf of said corporation by authority of its board of directors, and said George R. Butler and Mildred B. Butler acknowledge said instrument to be the free act and deed of said corporation.

\_\_\_\_\_  
 Notary Public, Hennepin County, Minnesota  
 My Commission Expires \_\_\_\_\_

I hereby certify that I have surveyed and platted the property described and shown on this plat as MARIE SMITH SECOND ADDITION, that this plat is a correct representation of said survey, that all distances are correctly shown on said plat in feet and decimals of a foot, that the monuments for the guidance of future surveys have been correctly placed in the ground as shown on said plat, that the outside boundary lines are correctly designated on said plat, and there are no wetlands or public highways to be designated on said plat other than as shown thereon.

\_\_\_\_\_  
 Calvin H. Hedlund, Land Surveyor  
 Minnesota Registration No. 5942

State of Minnesota  
County of Hennepin The above certificate was subscribed and sworn to before me, a Notary Public, within and for said County and State, on this \_\_\_\_\_ day of \_\_\_\_\_ A.D. 1965.

\_\_\_\_\_  
 Notary Public, Hennepin County, Minnesota  
 My Commission Expires \_\_\_\_\_

The plat of MARIE SMITH SECOND ADDITION was approved and accepted by the City Council of Bloomington, Minnesota, at a regular meeting thereof held on this \_\_\_\_\_ day of \_\_\_\_\_ A.D. 1965.

\_\_\_\_\_  
 City Council, Bloomington, Minnesota

by \_\_\_\_\_ its Mayor  
 by \_\_\_\_\_ its Manager

The boundaries of this plat and the boundaries of the blocks therein have been mathematically checked and approved. No determination has been made to ascertain that the legal description agrees with said plat.

Dated this \_\_\_\_\_ day of \_\_\_\_\_ A.D. 1965.

by \_\_\_\_\_  
 Elmer Peterson, Hennepin County Surveyor