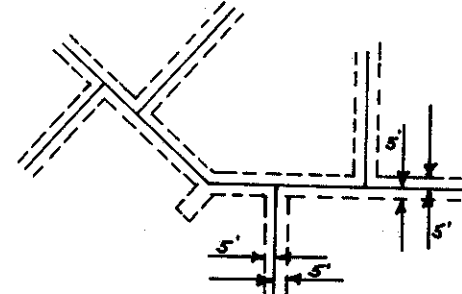


MARIE SMITH ADDITION

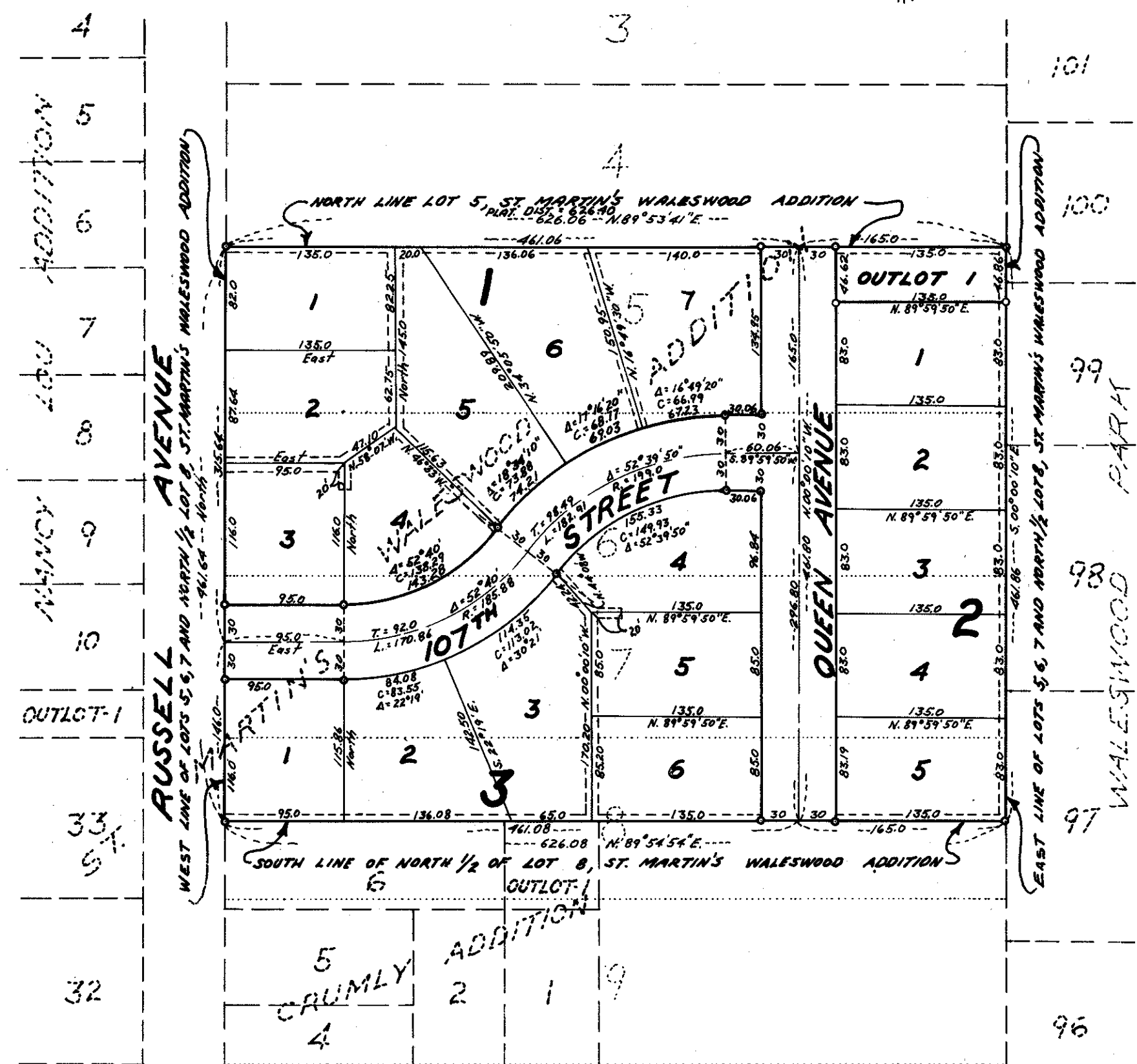
CITY OF BLOOMINGTON
HENNEPIN COUNTY, MINNESOTA

"O" DENOTE IRON MONUMENTS.
BEARINGS SHOWN ARE ASSUMED.

DRAINAGE & UTILITY EASEMENTS ARE
DENOTED THUS
BEING SHOWN ON EACH SIDE OF LOT LINES.



Scale 1" = 100'



Know all men by these presents: That George R. Butler Construction Co, a Minnesota Corporation, as owner and proprietor of the following described property situated in the State of Minnesota and County of Hennepin to wit: Lots No. 5, 6 and 7 and the North 1/2 of Lot 8, St. Martin's Waleswood Addition, according to the plat thereof on file or of record in the office of the Register of Deeds in and for said Hennepin County. Has caused the same to be surveyed and platted as MARIE SMITH ADDITION and has hereby donate and dedicate to the public for the public use forever the street and avenue and also the easements for utility and drainage purposes on the annexed plat. In witness whereof George R. Butler Construction Co. has caused these presents to be signed by its proper officers and its corporate seal to be hereunto affixed this _____ day of _____ A.D. 1964.

In Presence of

Signed

GEORGE R. BUTLER CONSTRUCTION CO.

George R. Butler its President

Mildred B. Butler its Secretary

State of Minnesota
County of Hennepin On this _____ day of _____ A.D. 1964, before me a Notary Public, within and for said County and State, personally appeared George R. Butler and Mildred B. Butler, to me personally known, who being by me each duly sworn, did say that they are respectively the President and Secretary of George R. Butler Construction Co, the corporation named in the foregoing instrument, that the seal affixed to said instrument is the corporate seal of said corporation, that said instrument was signed and sealed in behalf of said corporation by authority of its board of directors, and said George R. Butler and Mildred B. Butler acknowledge said instrument to be the free act and deed of said corporation.

Notary Public, Hennepin County, Minnesota
My Commission Expires _____

I hereby certify that I have surveyed and platted the property described and shown on this plat as MARIE SMITH ADDITION, that this plat is a correct representation of said survey, that all distances are correctly shown on said plat in feet and decimals of a foot, that the monuments for the guidance of future surveys have been correctly placed in the ground as shown on said plat, that the outside boundary lines are correctly designated on said plat, and there are no wetlands or public highways to be designated on said plat other than as shown thereon.

Colvin H. Hedlund, Land Surveyor
Minnesota Registration No. 5942

State of Minnesota
County of Hennepin The above certificate was subscribed and sworn to before me, a Notary Public, within and for said County and State, on this _____ day of _____ A.D. 1964.

Notary Public, Hennepin County, Minnesota
My Commission Expires _____

The plat of MARIE SMITH ADDITION was approved and accepted by the City Council of Bloomington, Minnesota, at a regular meeting thereof held on this _____ day of _____ A.D. 1964.

City Council, Bloomington, Minnesota

by Donald R. Hasselberg its Mayor by _____ its Manager

The boundaries of this plat and the boundaries of the blocks therein have been mathematically checked and approved. No determination has been made to ascertain that the legal description agrees with said plat. Dated this _____ day of _____ A.D. 1964.

by Howard W. Perkins, Hennepin County Surveyor