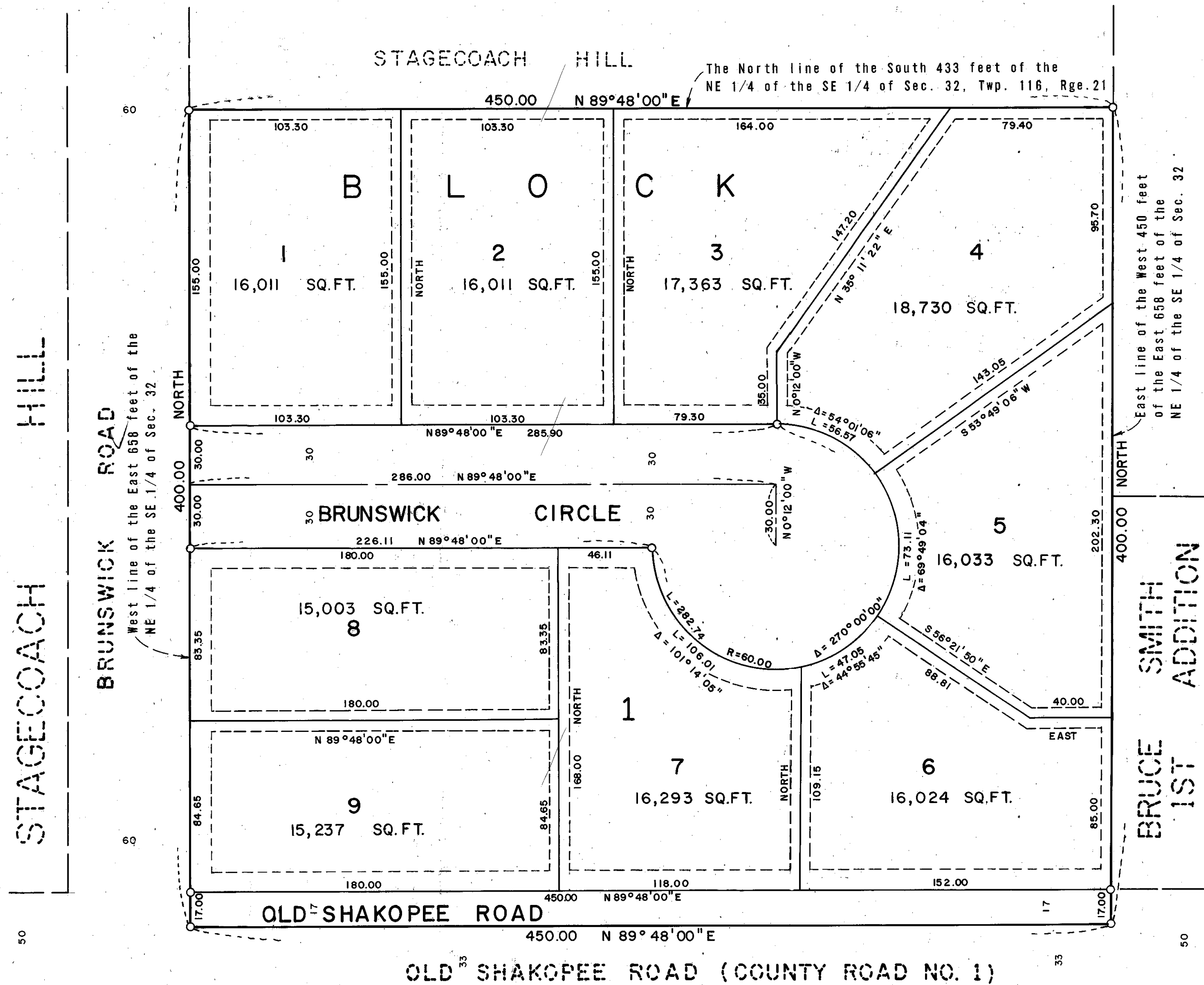


# MAC INVESTMENTS 1ST ADDITION



KNOW ALL MEN BY THESE PRESENTS: That Mac Investments, a Minnesota limited partnership, whose general partner is Land Unlimited, Inc., a Minnesota Corporation, owner and proprietor, and Richfield Bank and Trust Co., a Minnesota Corporation, mortgagee, of the following described property, situate in the County of Hennepin, State of Minnesota, to wit:

The north 400 feet of the south 433 feet of the west 450 feet of the east 658 feet of the Northeast 1/4 of the Southeast 1/4 of Section 32, Township 116, Range 21.

Have caused the same to be surveyed and platted as MAC INVESTMENTS 1ST ADDITION and do hereby donate and dedicate to the public for public use forever the road, <sup>circle</sup> and easements for drainage and utility purposes, as shown on the plat.

In witness whereof Mac Investments, a Minnesota limited partnership, whose general partner is Land Unlimited, Inc., a Minnesota Corporation, has caused these presents to be signed by its proper officers and its corporate seal to be hereunto affixed this \_\_\_ day of \_\_\_ A.D., 19\_\_.

And Richfield Bank and Trust Co., a Minnesota corporation, has caused these presents to be signed by its proper officers and its corporate seal to be hereunto affixed this \_\_\_ day of \_\_\_ A.D., 19\_\_.

IN PRESENCE OF: \_\_\_\_\_ SIGNED: Land Unlimited, Inc., General Partner

Witness \_\_\_\_\_ its \_\_\_\_\_  
 Witness \_\_\_\_\_ its \_\_\_\_\_  
 Witness \_\_\_\_\_ its \_\_\_\_\_  
 Witness \_\_\_\_\_ its \_\_\_\_\_  
 Witness \_\_\_\_\_ its \_\_\_\_\_  
 Witness \_\_\_\_\_ its \_\_\_\_\_

State of Minnesota County of \_\_\_\_\_ On this \_\_\_ day of \_\_\_ A.D., 19\_\_, before me, a Notary Public, within and for said County and State, personally appeared \_\_\_\_\_ and \_\_\_\_\_ to me personally known, who being by me each duly sworn did say that they are the \_\_\_\_\_ respectively, of Land Unlimited, Inc., the corporation named in the foregoing instrument and the general partner of Mac Investments, the Minnesota limited partnership named in the foregoing instrument; that the seal affixed to said instrument is the corporate seal of said corporation; that said instrument was signed and sealed in behalf of said limited partnership by said corporation by authority of its Board of Directors and said \_\_\_\_\_ and \_\_\_\_\_ acknowledge said instrument to be the free act and deed of said corporation.

Notary Public, \_\_\_\_\_ County, Minnesota  
 My Commission Expires \_\_\_\_\_

State of Minnesota County of \_\_\_\_\_ On this \_\_\_ day of \_\_\_ A.D., 19\_\_, before me, a Notary Public, within and for said County and State, personally appeared \_\_\_\_\_ and \_\_\_\_\_ to me personally known, who being by me each duly sworn did say that they are the \_\_\_\_\_ respectively, of Richfield Bank and Trust Co., the corporation named in the foregoing instrument; that the seal affixed to said instrument is the corporate seal of said corporation; that said instrument was signed and sealed in behalf of said corporation by authority of its Board of Directors and said \_\_\_\_\_ and \_\_\_\_\_ acknowledge said instrument to be the free act and deed of said corporation.

Notary Public, \_\_\_\_\_ County, Minnesota  
 My Commission Expires \_\_\_\_\_

I hereby certify that I have surveyed and platted the property described on this plat as MAC INVESTMENTS 1ST ADDITION; that this plat is a correct representation of said survey; that all distances are correctly shown in feet and decimals of a foot; that all monuments have been correctly placed in the ground as shown; that the outside boundary lines are correctly designated; and there are no wet lands to be designated on said plat.

Arvid T. Bodin  
 Arvid T. Bodin  
 Land Surveyor  
 Minn. Reg. No. 9396

State of Minnesota County of Hennepin The Surveyor's certificate was subscribed and sworn to before me this 5<sup>th</sup> day of November A.D., 1971.

Wesley B. Baillif  
 Wesley B. Baillif  
 Notary Public, Hennepin County, Minn.  
 My Commission Expires April 11, 1978

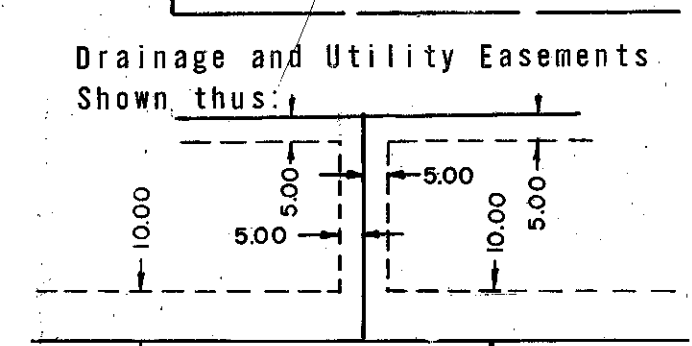
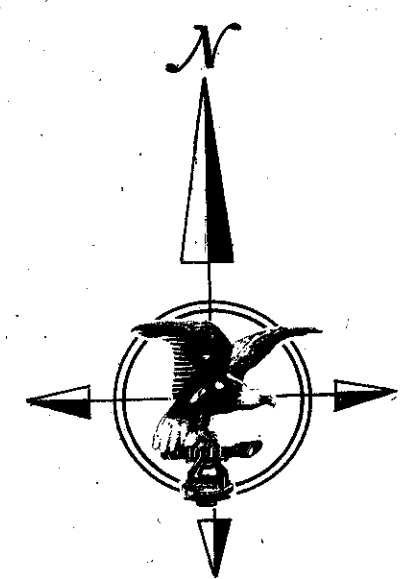
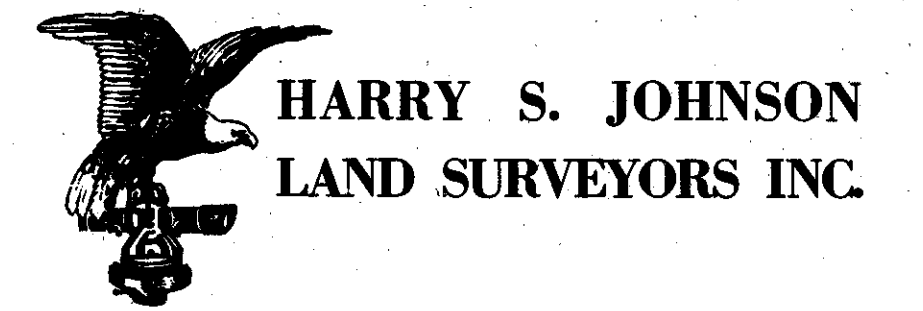
Approved by the City Council of Bloomington, Minnesota, at a regular meeting thereof held this \_\_\_ day of \_\_\_ A.D., 19\_\_.

CITY COUNCIL OF BLOOMINGTON, MINNESOTA

By: \_\_\_\_\_ Mayor By: \_\_\_\_\_ Manager

Pursuant to Chapter 810, Minnesota Laws of 1969, this plat has been approved this \_\_\_ day of \_\_\_ 19\_\_.

By: \_\_\_\_\_  
 Elmer J. Peterson  
 Hennepin County Surveyor



Being 5 feet in width and adjoining all side and rear lot lines and 10 feet in width and adjoining all public roads.

SCALE: 1 INCH = 40 FEET  
 O DENOTES IRON MONUMENT  
 BEARINGS SHOWN ARE ASSUMED