

COMPARED BY 116

(ORIGINAL)

3332

I Hereby Certify That  
**ADDITION**  
116  
DONALD BENNYHOFF

*B. H. Allison*



# LYNETTE ADDITION

## HENNEPIN COUNTY, MINN.

SCALE 1"=100'

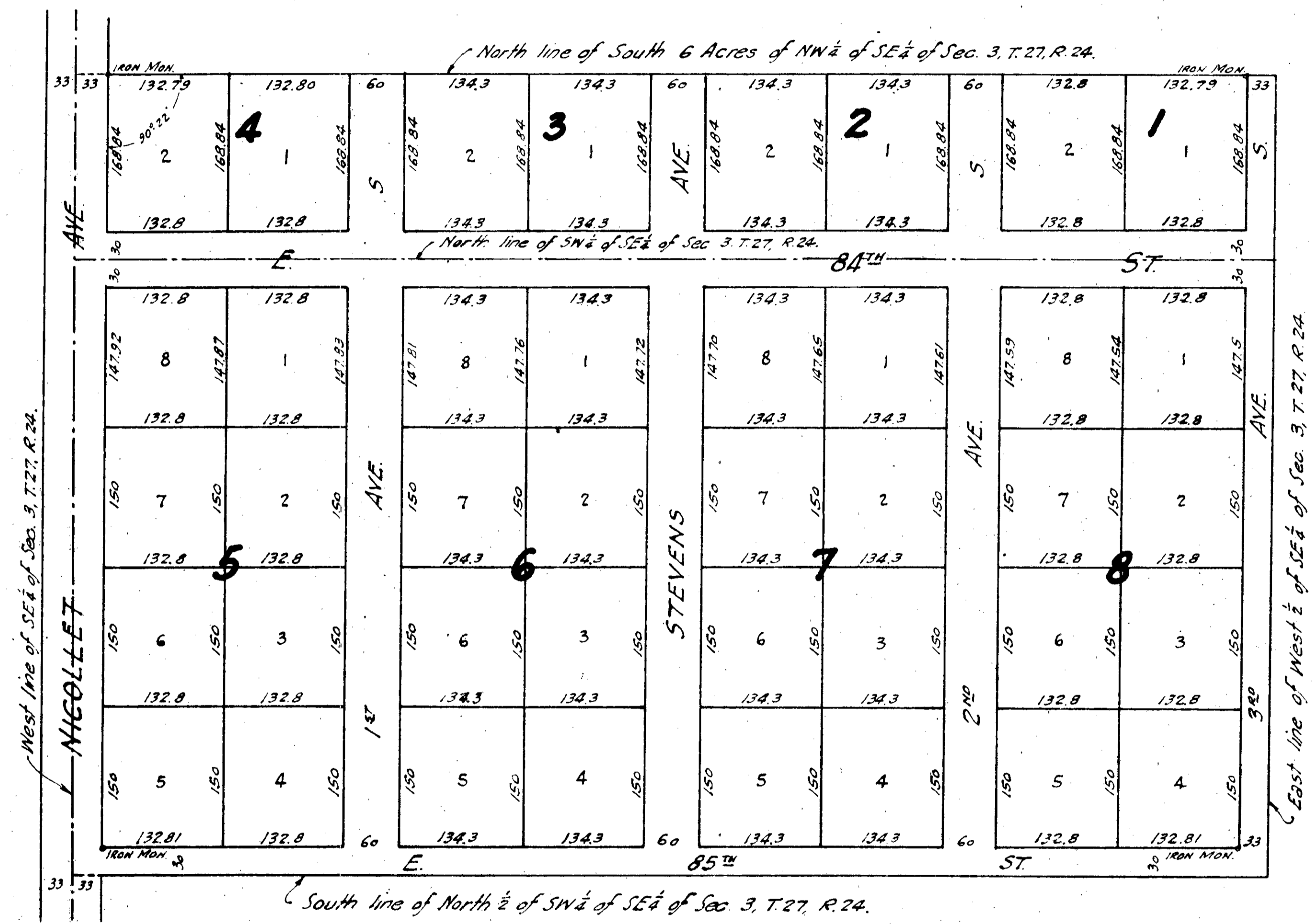
J. CALVIN BARKER  
Surveyor - Minn. Reg. No. 2449

APRIL 1946

TAXES PAID AND TRANSFER EXPENSES  
MAY 3 1946  
AL PERICKSON, AUDITOR  
HENNEPIN COUNTY, MINN.

L-12

*J. B. Jewele*



Know all men by these presents that Jennie L. Haberberg, single, owner and proprietor of the following described property situated in the State of Minnesota and County of Hennepin to-wit: The North 1/2 of the SW 1/4 of the SE 1/4 and the South 6 Acres of the NW 1/4 of the SE 1/4, all in Section 3, Township 27 North, Range 24 West of the Fourth Principal Meridian, Has caused the same to be surveyed and platted as "LYNETTE ADDITION", and does hereby donate and dedicate to the public use forever the Streets and Avenues as shown on the annexed plat: In witness whereof she has hereunto set her hand and seal this 22<sup>nd</sup> day of April A.D. 1946.

In Presence of:  
*J. B. Jewele* (SEAL)  
*J. B. Jewele*

State of Minnesota } S.S.  
County of Hennepin } On this 22<sup>nd</sup> day of April A.D. 1946, before me, a Notary Public, personally appeared Jennie L. Haberberg to me known to be the person described in and who executed the foregoing instrument and she acknowledged that she executed the same as her own free act and deed.

*J. B. Jewele*  
Notary Public, Hennepin County, Minnesota  
My Commission expires Nov. 17, 1947

State of Minnesota } S.S.  
County of Hennepin } I hereby certify that I have surveyed and platted the property described on this plat as "LYNETTE ADDITION"; that this plat is a correct representation of said survey; that all distances are correctly shown on the plat in feet and decimals of a foot; that the monuments for guidance of future surveys have been correctly placed in the ground as shown on the plat; that the outside boundary lines are correctly designated on the plat; that the topography of the land is correctly shown on the plat and that there are no wet lands or public highways to be designated on said plat other than as shown thereon.

*J. Calvin Barker*  
Surveyor

Above certificate subscribed and sworn to before me this 22<sup>nd</sup> day of April 1946.

*O. Carlson*  
Notary Public, Hennepin County, Minnesota  
My Commission expires May 24<sup>th</sup> 1950

Approved as to form and execution  
this 2<sup>nd</sup> day of May 1946.  
*John W. Shaffer*  
Special Ass't County Attorney

Approved this 2<sup>nd</sup> day  
of May 1946.  
*John W. Shaffer*  
County Surveyor  
BY *Howard W. Perkins*  
Deputy County Surveyor

This plat was approved and accepted by the Board of County Commissioners of Hennepin County, Minnesota at a regular meeting thereof held this 3<sup>rd</sup> day of May, 1946.

BOARD OF COUNTY COMMISSIONERS  
*Howard W. Perkins*  
County Board