

# LINDAU LINK ADDITION

R.T. DOC. NO. \_\_\_\_\_  
C.R. DOC. NO. \_\_\_\_\_

KNOW ALL PERSONS BY THESE PRESENTS: That Port Authority of the City of Bloomington, a Minnesota public body corporate and politic, owner and proprietor of the following described property situated in the County of Hennepin, State of Minnesota, to wit:

That part of Lot 1, Block 1, ALPHA BUSINESS CENTER, embraced within the North 10 acres of the South 26 acres of the Southwest Quarter of the Northeast Quarter, Section 1, Township 27 North, Range 24.

And  
That part of Lot 1, Block 1, ALPHA BUSINESS CENTER, embraced within the South 16 acres of the Southwest 1/4 of the Northeast 1/4, Section 1, Township 27 North, Range 24, West of the Fourth Principal Meridian, according to the recorded plat thereof, Hennepin County, Minnesota.

Has caused the same to be surveyed and platted as LINDAU LINK ADDITION and does hereby dedicate to the public for public use forever the easements for drainage and utility purposes as shown on this plat.

In witness whereof said Port Authority of the City of Bloomington, a Minnesota public body corporate and politic, has caused these presents to be signed by its proper officer this 16<sup>th</sup> day of February, 2014.

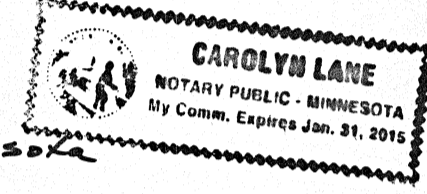
Port Authority of the City of Bloomington, Minnesota

SIGNED: Schane Rudlang its ADMINISTRATOR

STATE OF MINNESOTA  
COUNTY OF Dakota/Hennepin

The foregoing instrument was acknowledged before me this 10<sup>th</sup> day of February, 2014, by Schane Rudlang the Administrator of said Port Authority of the City of Bloomington, a Minnesota public body corporate and politic, on behalf of said public body corporate and politic.

Carolyn Lane  
Carolyn Lane  
Notary Public, Dakota County, Dakota Minnesota  
My Commission Expires 1/31/2015



I, Mark S. Hanson, do hereby certify that this plat was prepared by me or under my direct supervision; that I am a duly Licensed Land Surveyor in the State of Minnesota; that this plat is a correct representation of the boundary survey; that all mathematical data and labels are correctly designated on this plat; that all monuments depicted on this plat have been or will be correctly set within one year; that all water boundaries and wet lands as defined in Minnesota Statutes, Section 505.01, Subd. 3, as of the date of this certificate are shown and labeled on this plat; and all public ways are shown and labeled on the plat.

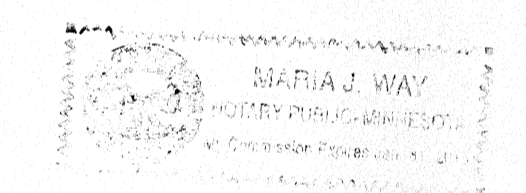
Dated this 16<sup>th</sup> day of JANUARY, 2014.

Mark S. Hanson  
Mark S. Hanson, Land Surveyor  
Minnesota License No. 15480

STATE OF MINNESOTA  
COUNTY OF Hennepin

This instrument was acknowledged before me this 16<sup>th</sup> day of January, 2014, by Mark S. Hanson.

Maria J. Way  
Maria J. Way  
Notary Public, Dakota County, Minnesota  
My Commission Expires January 31, 2015



BLOOMINGTON, MINNESOTA

This plat of LINDAU LINK ADDITION was approved and accepted by the City Council of Bloomington, Minnesota, at a regular meeting thereof held this 16<sup>th</sup> day of December, 2013. If applicable, the written comments and recommendations of the Commissioner of Transportation and the County Highway Engineer have been received by the City or the prescribed 30 day period has elapsed without receipt of such comments and recommendations, as provided by Minn. Statutes, Section 505.03, Subd. 2.

CITY COUNCIL OF BLOOMINGTON, MINNESOTA

By Steve Rasmussen, Mayor By Wojciech, City Manager

TAXPAYER SERVICES DEPARTMENT, Hennepin County, Minnesota

I hereby certify that taxes payable in 20     and prior years have been paid for land described on this plat, dated this      day of     , 20    .

Mark V. Chapin, County Auditor BY:      Deputy

SURVEY DIVISION, Hennepin County, Minnesota

Pursuant to Minnesota Statutes, Sec. 383B.565 (1969), this plat has been approved this      day of     , 20    .

William P. Brown, County Surveyor BY:     

REGISTRAR OF TITLES, Hennepin County, Minnesota

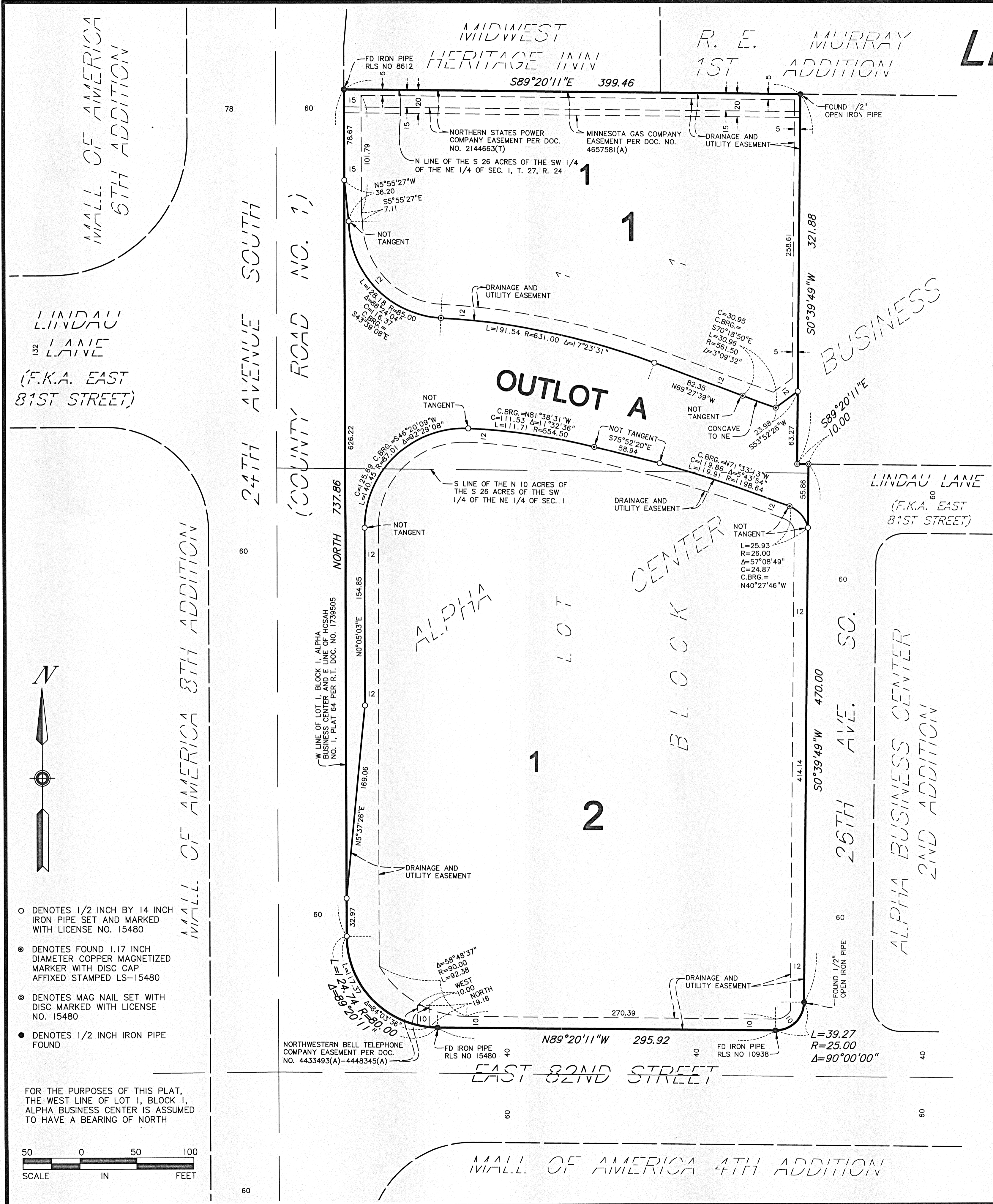
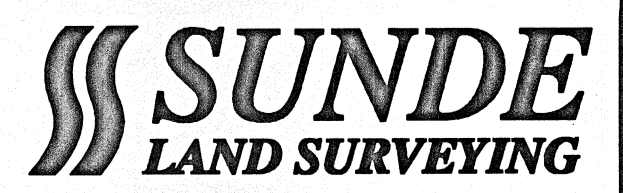
I hereby certify that the within plat of LINDAU LINK ADDITION was filed in this office this      day of     , 20     at      o'clock      M.

Martin McCormick, Registrar of Titles BY:      Deputy

COUNTY RECORDER, Hennepin County, Minnesota

I hereby certify that the within plat of LINDAU LINK ADDITION was recorded in this office this      day of     , 20     at      o'clock      M.

Martin McCormick, County Recorder BY:      Deputy



- DENOTES 1/2 INCH BY 14 INCH IRON PIPE SET AND MARKED WITH LICENSE NO. 15480
- DENOTES FOUND 1.17 INCH DIAMETER COPPER MAGNETIZED MARKER WITH DISC CAP AFFIXED STAMPED LS-15480
- ◎ DENOTES MAG NAIL SET WITH DISC MARKED WITH LICENSE NO. 15480
- DENOTES 1/2 INCH IRON PIPE FOUND

FOR THE PURPOSES OF THIS PLAT, THE WEST LINE OF LOT 1, BLOCK 1, ALPHA BUSINESS CENTER IS ASSUMED TO HAVE A BEARING OF NORTH

