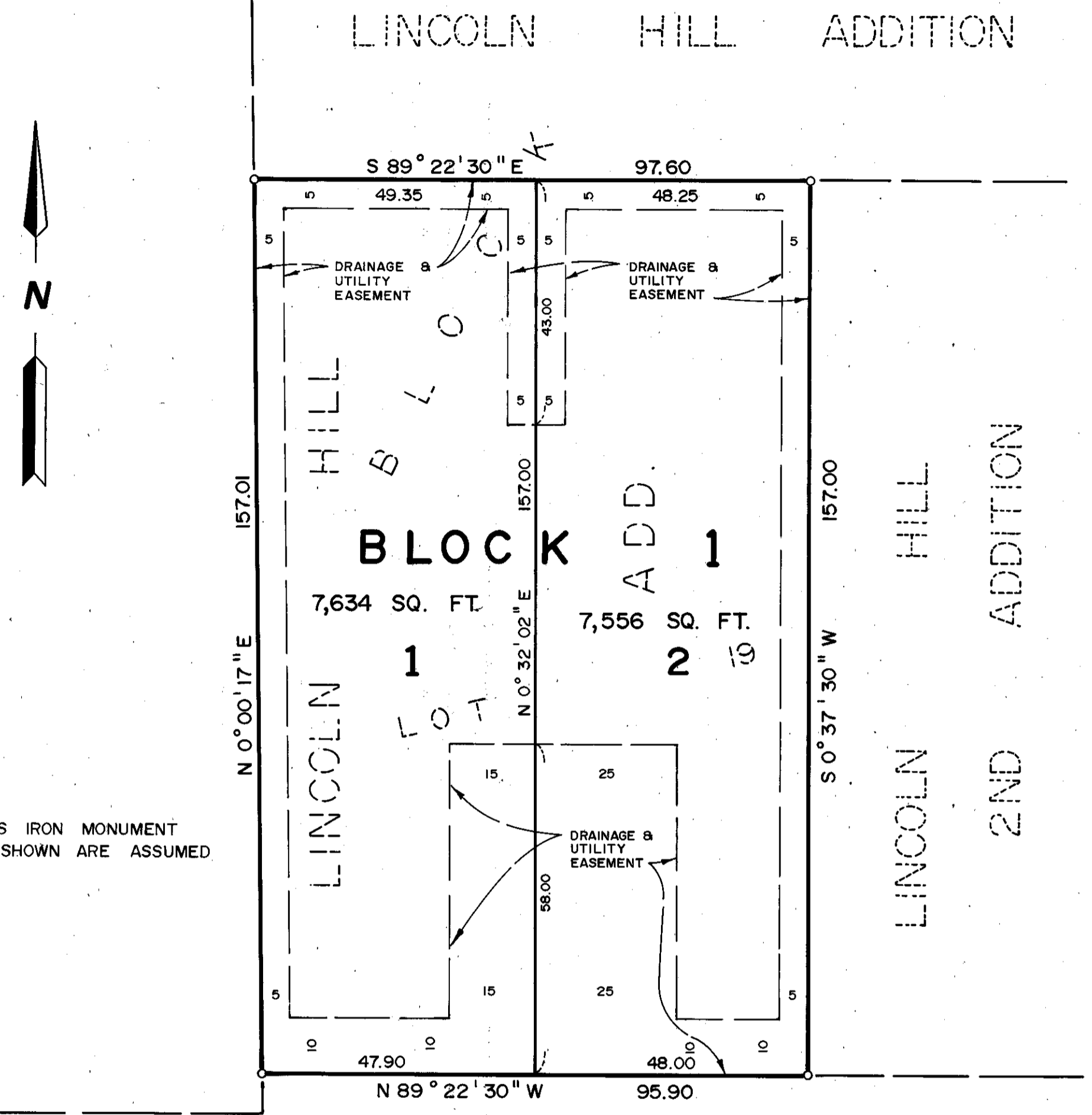


# LINCOLN HILL 3RD ADDITION

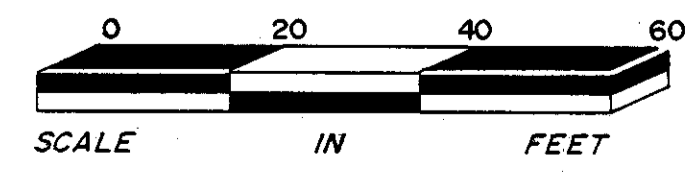
C.R. DOC. NO. \_\_\_\_\_



o DENOTES IRON MONUMENT  
BEARINGS SHOWN ARE ASSUMED

90TH STREET WEST

CARLETON  
NELSON  
ADD.



KNOW ALL MEN BY THESE PRESENTS: That Paul Baszucki and Helen G. Baszucki, husband and wife, owners and proprietors, and NORWEST BANK MINNESOTA, NATIONAL ASSOCIATION, a National Banking Association, mortgagee, of the following described property situated in the County of Hennepin, State of Minnesota, to wit:

Lot 19, Block 1, LINCOLN HILL ADDITION, according to the plat thereof on file or of record in the office of the County Recorder, Hennepin County, Minnesota.

Have caused the same to be surveyed and platted as LINCOLN HILL 3RD ADDITION and do hereby donate and dedicate to the public, for public use forever the drainage and utility easements as shown on said plat.

In witness whereof said Paul Baszucki and Helen G. Baszucki, husband and wife, have set their hands this 13 day of April, 1988.

SIGNED: Paul Baszucki  
Paul Baszucki

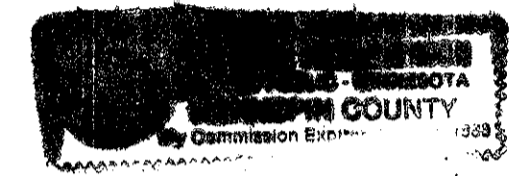
Helen G. Baszucki  
Helen G. Baszucki

And in witness whereof said NORWEST BANK MINNESOTA, NATIONAL ASSOCIATION, a National Banking Association, has caused these presents to be signed by its proper officers and its corporate seal to be hereunto affixed this 13 day of April, 1988.

SIGNED: R. I. Lund its Sr. Vice Pres. and William A. Blackburn its Commercial Banking Officer

STATE OF MINNESOTA  
COUNTY OF Hennepin

The foregoing instrument was acknowledged before me this 13<sup>th</sup> day of April, 1988 by Paul Baszucki and Helen G. Baszucki, husband and wife.



Karen M. Nambreson  
Notary Public, Hennepin County, Minnesota  
My Commission Expires June 16, 1989

STATE OF Minnesota  
COUNTY OF Hennepin

The foregoing instrument was acknowledged before me this 13<sup>th</sup> day of April, 1988 by R. I. Lund its Sr. Vice Pres. and William A. Blackburn its Commercial Banking Officer of NORWEST BANK MINNESOTA, NATIONAL ASSOCIATION, a National Banking Association, on behalf of said association.



Clayton Frach  
Notary Public, Hennepin County, Minnesota  
My Commission Expires Aug. 9, 1993

I hereby certify that I have surveyed and platted the property described on this plat as LINCOLN HILL 3RD ADDITION; that this plat is a correct representation of said survey; that all distances are correctly shown in feet and hundredths of a foot; that all monuments have been correctly placed in the ground as shown; that the outside boundary lines are correctly designated; and that there are no wetlands or public highways to be designated on said plat.

Edward H. Sunde  
Edward H. Sunde, Land Surveyor  
Minnesota License No. 8612

STATE OF MINNESOTA  
COUNTY OF HENNEPIN

The foregoing surveyor's certificate was acknowledged before me this 13<sup>th</sup> day of APRIL, 1988 by Edward H. Sunde, Land Surveyor.



John K. Barnes  
Notary Public, HENNEPIN County, Minnesota  
My Commission Expires SEPTEMBER 26, 1991

BLOOMINGTON, MINNESOTA

This plat of LINCOLN HILL 3RD ADDITION was approved and accepted by the City Council of the City of Bloomington, Minnesota at a regular meeting thereof, held this \_\_\_\_\_ day of \_\_\_\_\_, 1988. If applicable, the written comments and recommendations of the Commissioner of Transportation and the County Highway Engineer have been received by the City or the prescribed 30 day period has elapsed without receipt of such comments and recommendations, as provided by Minn. Statutes, Section 505.03, Subd. 2.

CITY COUNCIL OF BLOOMINGTON, MINNESOTA

BY: \_\_\_\_\_ its Mayor BY: \_\_\_\_\_ its Manager

PROPERTY TAX AND PUBLIC RECORDS DEPARTMENT, Hennepin County, Minnesota

I hereby certify that taxes payable in 19\_\_\_\_ and prior years have been paid for land described on this plat. Dated this \_\_\_\_\_ day of \_\_\_\_\_, 1988.

Dale G. Folstad, Hennepin County Auditor BY: \_\_\_\_\_ Deputy

SURVEY DIVISION, Hennepin County, Minnesota

Pursuant to Chapter 810, Minnesota Laws of 1969, this plat has been approved this \_\_\_\_\_ day of \_\_\_\_\_, 1988.

Bernard H. Larson, Hennepin County Surveyor BY: \_\_\_\_\_

COUNTY RECORDER, Hennepin County, Minnesota

I hereby certify that the within plat of LINCOLN HILL 3RD ADDITION was filed in this office this \_\_\_\_\_ day of \_\_\_\_\_, 1988 at \_\_\_\_\_ o'clock \_\_\_\_\_ M.

R. Dan Carlson, County Recorder BY: \_\_\_\_\_ Deputy