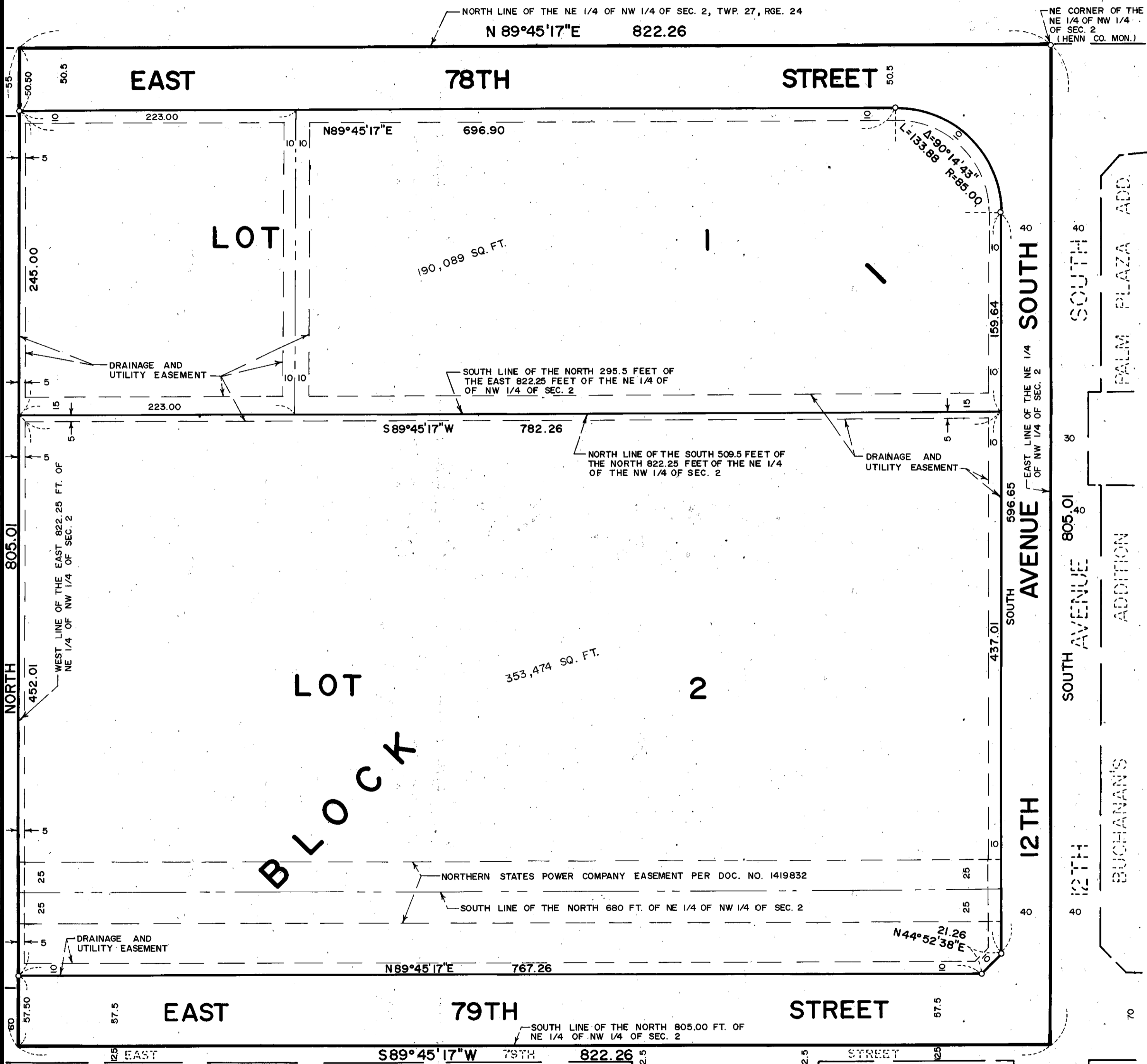


LESHUM ADDITION

C.R. DOC. NO. _____

U.S. STATE HIGHWAY NO. 58100 I NO. 494



KNOW ALL MEN BY THESE PRESENTS: That LESHUM PROPERTIES, a Minnesota general partnership, owner and proprietor and FIRST NATIONAL BANK OF MINNEAPOLIS, a National Banking Association Corporation, mortgagee of the following described property situated in the County of Hennepin, State of Minnesota to wit:

The North 295.5 feet of the East 822.25 feet of the Northeast 1/4 of the Northwest 1/4 of Section 2, Township 27, Range 24, Hennepin County, Minnesota.

and

The South 509.5 of the North 805 feet of the East 822.25 feet of the Northeast 1/4 of the Northwest 1/4 of Section 2, Township 27, Range 24, Hennepin County, Minnesota.

Have caused the same to be surveyed and platted as LESHUM ADDITION and do hereby donate and dedicate to the public, for public use forever the streets, avenue and drainage and utility easements as shown on said plat.

It witness whereof said LESHUM PROPERTIES, a Minnesota general partnership, has caused these presents to be signed by Clyde Pemble, general partner this _____ day of _____ 19____.

In witness whereof said FIRST NATIONAL BANK OF MINNEAPOLIS, a National Banking Association Corporation, has caused these presents to be signed by its proper officers and its corporate seal to be hereunto affixed this _____ day of _____ 19____.

LESHUM PROPERTIES

SIGNED: Clyde Pemble
Clyde Pemble, general partner

SIGNED: David V. Hansen its Vice President and William Shiple its IMMEDIATE CHIEF OFFICER
FIRST NATIONAL BANK OF MINNEAPOLIS

STATE OF MINNESOTA
COUNTY OF _____

The foregoing instrument was acknowledged before me this 30 day of September 19 79 by Clyde Pemble, general partner of said LESHUM PROPERTIES, a Minnesota general partnership, on behalf of said general partnership.

Elizabeth A. Pemble
Notary Public, Dakota County, Minnesota
My Commission Expires Jan 29, 1986

STATE OF MINNESOTA
COUNTY OF Dakota

The foregoing instrument was acknowledged before me this 27 day of September 19 79 by David Hansen its Vice President and William Shiple its Com. Bank Officer of said FIRST NATIONAL BANK OF MINNEAPOLIS, a National Banking Association Corporation, on behalf of said corporation.

Elizabeth A. Pemble
Notary Public, Dakota County, Minnesota
My Commission Expires Jan 29, 1986

I hereby certify that I have surveyed and platted the property described on this plat as LESHUM ADDITION; that this plat is a correct representation of said survey; that all distances are correctly shown on said plat in feet and hundredths of a foot; that all monuments have been correctly placed in the ground as shown on said plat; that the outside boundary lines are correctly designated on said plat; and that there are no wetlands to be designated on said plat.

Edward H. Sunde
Edward H. Sunde, Land Surveyor
Minnesota Registration No. 8612.

STATE OF MINNESOTA
COUNTY OF Hennepin

The foregoing instrument was acknowledged before me this 25th day of September 19 79 by Edward H. Sunde, Land Surveyor.

JOHN K. BARNES
NOTARY PUBLIC - MINNESOTA
HENNEPIN COUNTY
My commission expires Sept. 18, 1985

John K. Barnes
Notary Public, Hennepin County, Minnesota
My Commission Expires Sept. 18, 1985

BLOOMINGTON, MINNESOTA

The plat of LESHUM ADDITION was approved and accepted by the City Council of the City of Bloomington, Minnesota at a regular meeting thereof, held this _____ day of _____ 19____.

CITY COUNCIL OF BLOOMINGTON, MINNESOTA

BY: _____ its Mayor BY: _____ its Manager

FINANCE DIVISION, Hennepin County, Minnesota

I hereby certify that there are no delinquent taxes for all years prior to 19____ for land described on this plat. Dated this _____ day of _____ 19____.

Vernon T. Hoppe, Director BY: _____ Tax Clerk

SURVEY DIVISION, Hennepin County, Minnesota

Pursuant to Chapter 810, Minnesota Laws of 1969, this plat has been approved this _____ day of _____ 19____.

Alver R. Freeman, Hennepin County Surveyor BY: _____

COUNTY RECORDER, Hennepin County, Minnesota

I hereby certify that the within plat of LESHUM ADDITION was filed for record in this office this _____ day of _____ 19____, at _____ o'clock _____ M.

WAYNE A. JOHNSON, County Recorder BY: _____ Deputy