

KEVIN KLODT 2ND ADDITION

R.T. DOC. NO. _____

KNOW ALL MEN BY THESE PRESENTS: That The Travelers Insurance Company, a Connecticut corporation, fee owner, France Place Associates, a Minnesota limited partnership, the general partner of which is The Prospect Company, a Delaware corporation, having a lease-hold interest in and being the fee owner of all improvements, including the building, and The Travelers Insurance Company, a Connecticut corporation, Mortgagee of the following described property situated in the County of Hennepin, State of Minnesota, to wit:

Lot 1, Block 1, KEVIN KLODT 1ST ADDITION according to the recorded plat thereof, Hennepin County, Minnesota.

Have caused the same to be surveyed and platted as KEVIN KLODT 2ND ADDITION and do hereby donate and dedicate to the public for public use forever, the street and drainage and utility easements as shown on said plat.

In witness whereof said The Travelers Insurance Company, a Connecticut corporation, has caused these presents to be signed by its proper officers this 9th day of May, 1984.

And in witness whereof said The Prospect Company, a Delaware corporation, has caused these presents to be signed by its proper officers this 9th day of May, 1984.

And in witness whereof said The Travelers Insurance Company, a Connecticut corporation, has caused these presents to be signed by its proper officers this 9th day of May, 1984.

SIGNED: THE TRAVELERS INSURANCE COMPANY

RICHARD G. GRIFFITH; REG. VICE PRES

By Richard G. Griffith

PAMELA E. ELY; REG. DIRECTOR

By Pamela E. Ely

SIGNED: THE PROSPECT COMPANY, a general partner of France Place Associates

RICHARD G. GRIFFITH; REG. VICE PRES.

By Richard G. Griffith

PAMELA E. ELY; REG. DIRECTOR

By Pamela E. Ely

SIGNED: THE TRAVELERS INSURANCE COMPANY

RICHARD G. GRIFFITH; REG. VICE PRES.

By Richard G. Griffith

PAMELA E. ELY; REG. DIRECTOR

By Pamela E. Ely

STATE OF ILLINOIS

COUNTY OF DUPAGE

The foregoing instrument was acknowledged before me this 9th day of May, 1984 by

RICHARD G. GRIFFITH, REGIONAL VICE PRESIDENT AND PAMELA E. ELY

REGIONAL DIRECTOR of said The Travelers Insurance Company, a Connecticut corporation, on behalf of said corporation.

Nelda Becker
Notary Public, COOK County, ILLINOIS
My Commission Expires 7-6-85

STATE OF ILLINOIS

COUNTY OF DUPAGE

The foregoing instrument was acknowledged before me this 9th day of May, 1984 by

RICHARD G. GRIFFITH, REGIONAL VICE PRESIDENT AND PAMELA E. ELY

REGIONAL DIRECTOR of said The Prospect Company, a Delaware corporation, a general partner of France Place Associates, a Minnesota limited partnership, on behalf of said corporation.

Nelda Becker
Notary Public, COOK County, ILLINOIS
My Commission Expires 7-6-85

STATE OF ILLINOIS

COUNTY OF DUPAGE

The foregoing instrument was acknowledged before me this 9th day of MAY, 1984 by

RICHARD G. GRIFFITH, REGIONAL VICE PRESIDENT AND PAMELA E. ELY

REGIONAL DIRECTOR of said The Travelers Insurance Company, a Connecticut corporation, on behalf of said corporation.

Nelda Becker
Notary Public, COOK County, ILLINOIS
My Commission Expires 7-6-85

I hereby certify that I have surveyed and platted the property described on this plat as KEVIN KLODT 2ND ADDITION; that this plat is a correct representation of said survey; that all distances are correctly shown on said plat in feet and hundredths of a foot; that all monuments have been correctly placed in the ground as shown on said plat; that the outside boundary lines are correctly designated on said plat; and that there are no wetlands to be designated on said plat

Harry S. Johnson
Land Surveyor
Minnesota License No. 5065

STATE OF MINNESOTA

COUNTY OF HENNEPIN

The foregoing Surveyor's Certificate was acknowledged before me this 24 day of APRIL, 1984, by Harry S. Johnson, Land Surveyor.



Steven Paul Pierson
Notary Public, Hennepin County, Minnesota
My Commission Expires 7-28-88

BLOOMINGTON, MINNESOTA

The plat of KEVIN KLODT 2ND ADDITION was approved and accepted by the City Council of Bloomington, Minnesota at a regular meeting thereof held this _____ day of _____, 19____. If applicable, the written comments and recommendations of the Commissioner of Transportation and the County Highway Engineer have been received by the City or the prescribed 30 day period has elapsed without receipt of such comments and recommendations as provided by Minn. Statutes, Section 505.03, Subd. 2.

CITY COUNCIL OF BLOOMINGTON, MINNESOTA

By _____ Mayor By _____ Manager

PROPERTY TAXATION DEPARTMENT, Hennepin County, Minnesota

I hereby certify that there are no delinquent taxes for all years prior to 19____ for land described on this plat. Dated this _____ day of _____, 19____.

Vernon T. Hoppe, Director By: _____ Tax Clerk

SURVEY DIVISION, Hennepin County, Minnesota

Pursuant to Chapter 810 Minnesota Laws of 1969, this plat has been approved this _____ day of _____, 19____.

Robert L. Bakka, Hennepin County Surveyor By: _____

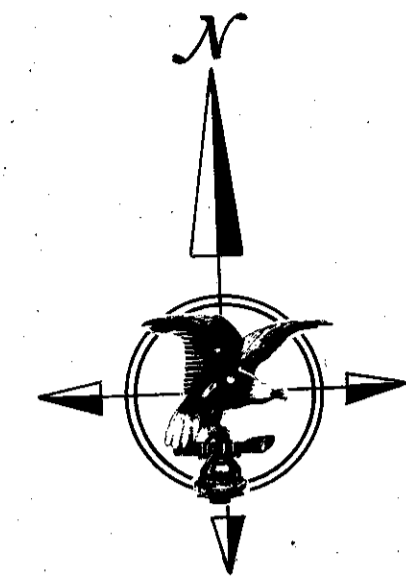
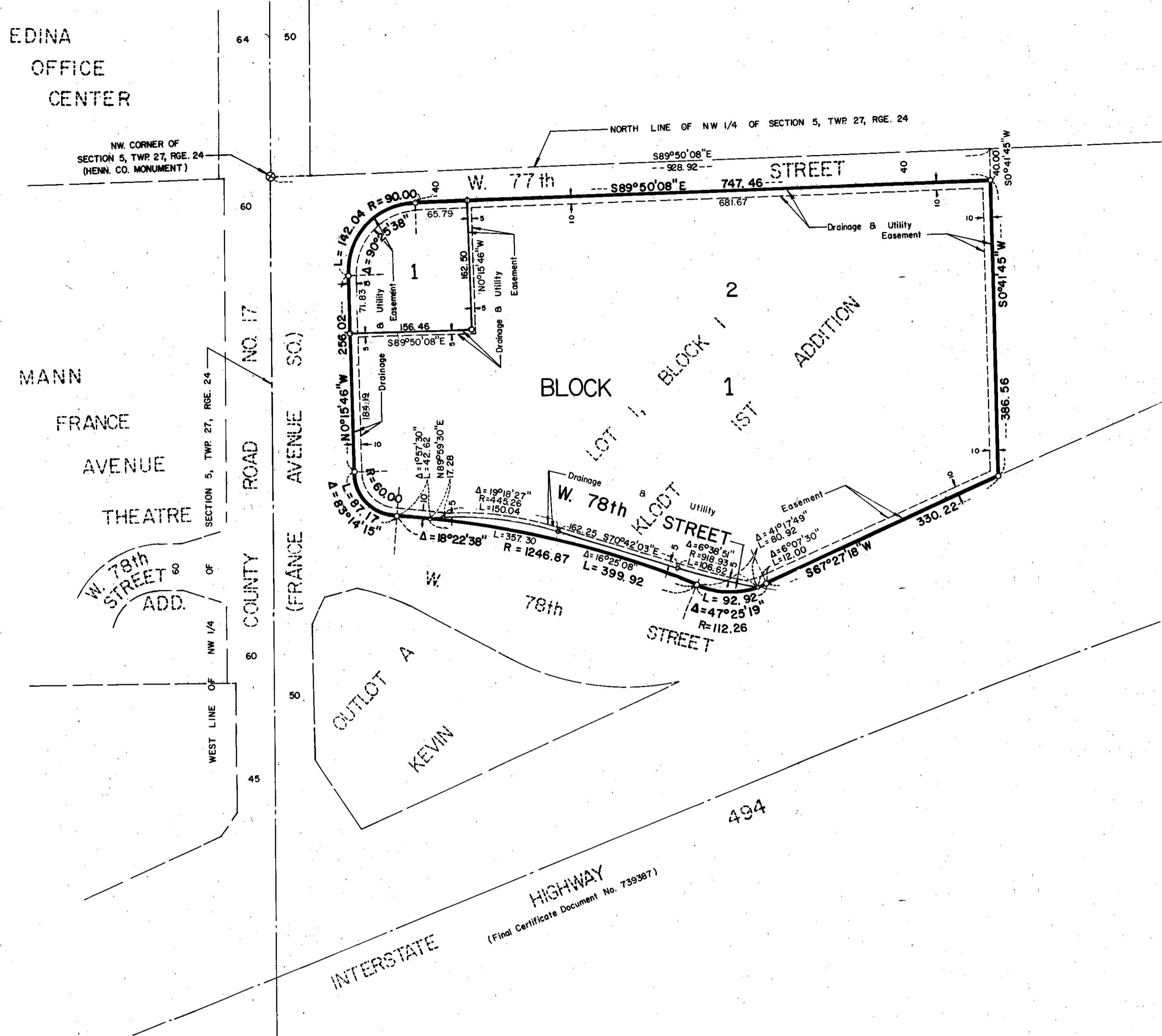
REGISTRAR OF TITLES, Hennepin County, Minnesota

I hereby certify that the within plat of KEVIN KLODT 2ND ADDITION was filed in this office this _____ day of _____, 19____, at _____ o'clock _____m.

R. Dan Carlson, Registrar of Titles By: _____ Deputy

KEVIN KLODT 2ND ADDITION

R.T. DOC. NO. _____



SCALE
100 50 0 100 200 300
IN FEET
o Denotes Iron Monument
Bearings Shown Are Based On Assumed Datum

