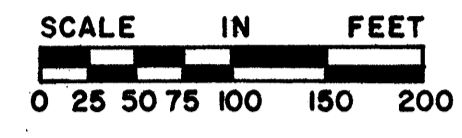
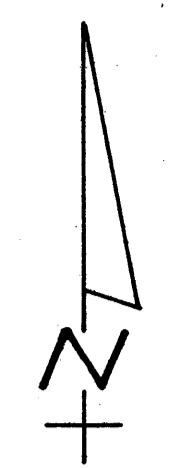


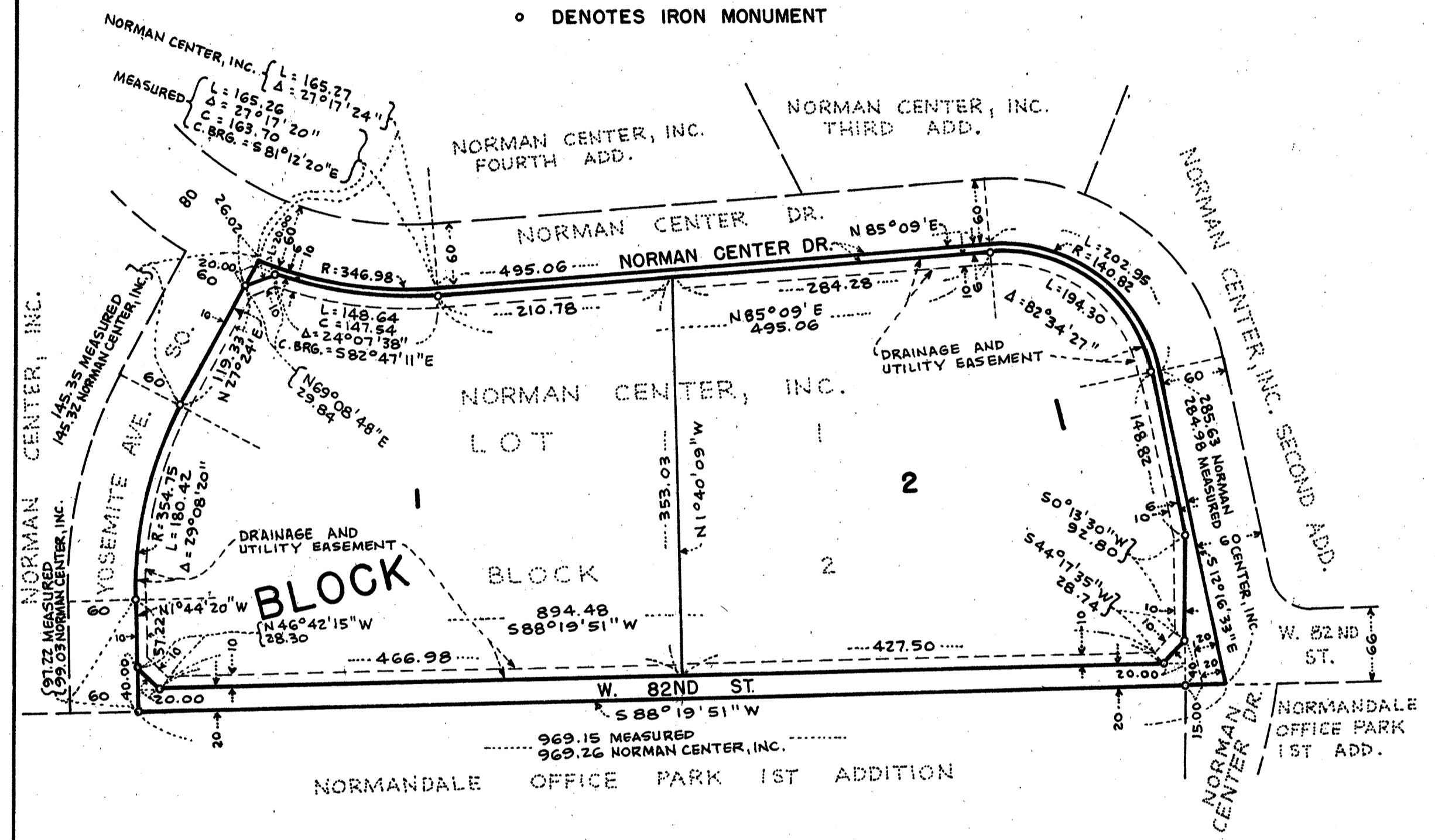
# JOSTEN'S ADDITION

R.T. DOC. NO. \_\_\_\_\_

C. E. COULTER & ASSOCIATES, INC.  
LAND SURVEYORS



ALL BEARINGS SHOWN ARE ASSUMED  
• DENOTES IRON MONUMENT



KNOW ALL MEN BY THESE PRESENTS: That Jostens, Inc., a Minnesota corporation, owner and proprietor of the following described property situated in the County of Hennepin, State of Minnesota, to wit:

Lot 1, Block 2, NORMAN CENTER, INC., according to the plat thereof on file and of record in the office of the Registrar of Titles, County of Hennepin.

Has caused the same to be surveyed and platted as JOSTEN'S ADDITION and does hereby donate and dedicate to the public for the public use forever the Drive, Street and drainage and utility easements as shown on this plat.

In witness whereof said Jostens, Inc., the above mentioned corporation has caused these presents to be signed by its proper officers and its corporate seal to be hereunto affixed this 20TH day of OCTOBER, 1978.

Signed: Jostens, Inc.  
By Don C. Lein, Its EXECUTIVE VICE PRESIDENT  
By Robb L. Prince, Its VICE PRESIDENT

STATE OF MINNESOTA  
COUNTY OF HENNEPIN  
The foregoing instrument was acknowledged before me this 20TH day of OCTOBER, 1978, by DON C. LEIN, EXECUTIVE VICE PRESIDENT and ROBB L. PRINCE, VICE PRESIDENT of Jostens, Inc., a Minnesota corporation, on behalf of the corporation.

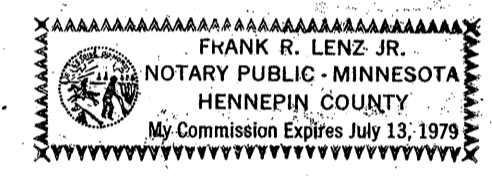
Jan Olson JAN OLSON  
Notary Public, HENNEPIN County, Minnesota  
My commission expires NOVEMBER 22 1983

I hereby certify that I have surveyed and platted the property described on this plat as JOSTEN'S ADDITION; that this plat is a correct representation of said survey; that all distances are correctly shown in feet and hundredths of a foot; that all monuments have been correctly placed in the ground as shown; that the outside boundary lines are correctly designated; and that there are no wet lands to be designated on said plat.

John A. Peterson  
John A. Peterson, Registered Land Surveyor  
Minnesota Registration No. 6267

STATE OF MINNESOTA  
COUNTY OF HENNEPIN  
The foregoing instrument was acknowledged before me this 20th day of October, 1978 by  
John A. Peterson, Land Surveyor.

Frank R. Lenz, Jr. FRANK R. LENZ, JR.  
Notary Public, HENNEPIN County, Minnesota  
My commission expires July 13, 1979



BLOOMINGTON, MINNESOTA  
This plat of JOSTEN'S ADDITION was approved and accepted by the City Council of the City of Bloomington, Minnesota, at a regular meeting thereof held this \_\_\_\_\_ day of \_\_\_\_\_ 197\_\_.

CITY COUNCIL OF THE CITY OF BLOOMINGTON, MINNESOTA  
By \_\_\_\_\_ Mayor  
By \_\_\_\_\_ Manager

FINANCE DIVISION, Hennepin County, Minnesota  
I hereby certify that there are no delinquent taxes for all years prior to \_\_\_\_\_ for land described on this plat. Dated this \_\_\_\_\_ day of \_\_\_\_\_ 197\_\_.

Vernon T. Hoppe, Director, By \_\_\_\_\_ Tax Clerk

SURVEY DIVISION, Hennepin County, Minnesota  
Pursuant to Chapter 810, Minnesota Laws of 1969, this plat has been approved this \_\_\_\_\_ day of \_\_\_\_\_ 197\_\_.

Alver R. Freeman  
Hennepin County Surveyor By \_\_\_\_\_

REGISTRAR OF TITLES, Hennepin County, Minnesota  
I hereby certify that the within plat of JOSTEN'S ADDITION was filed in this office this \_\_\_\_\_ day of \_\_\_\_\_ 197\_\_ at \_\_\_\_\_ o'clock \_\_\_\_\_ M.  
Wayne A. Johnson, Registrar of Titles By \_\_\_\_\_ Deputy