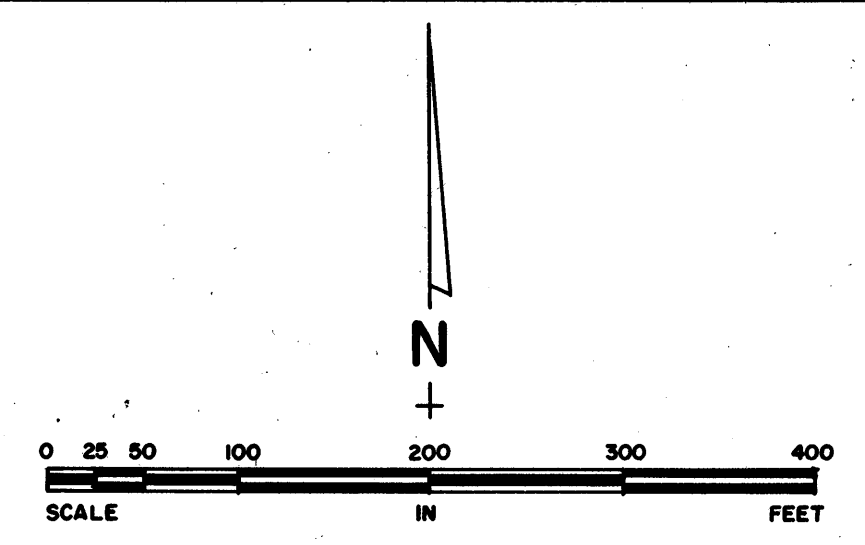


J-24

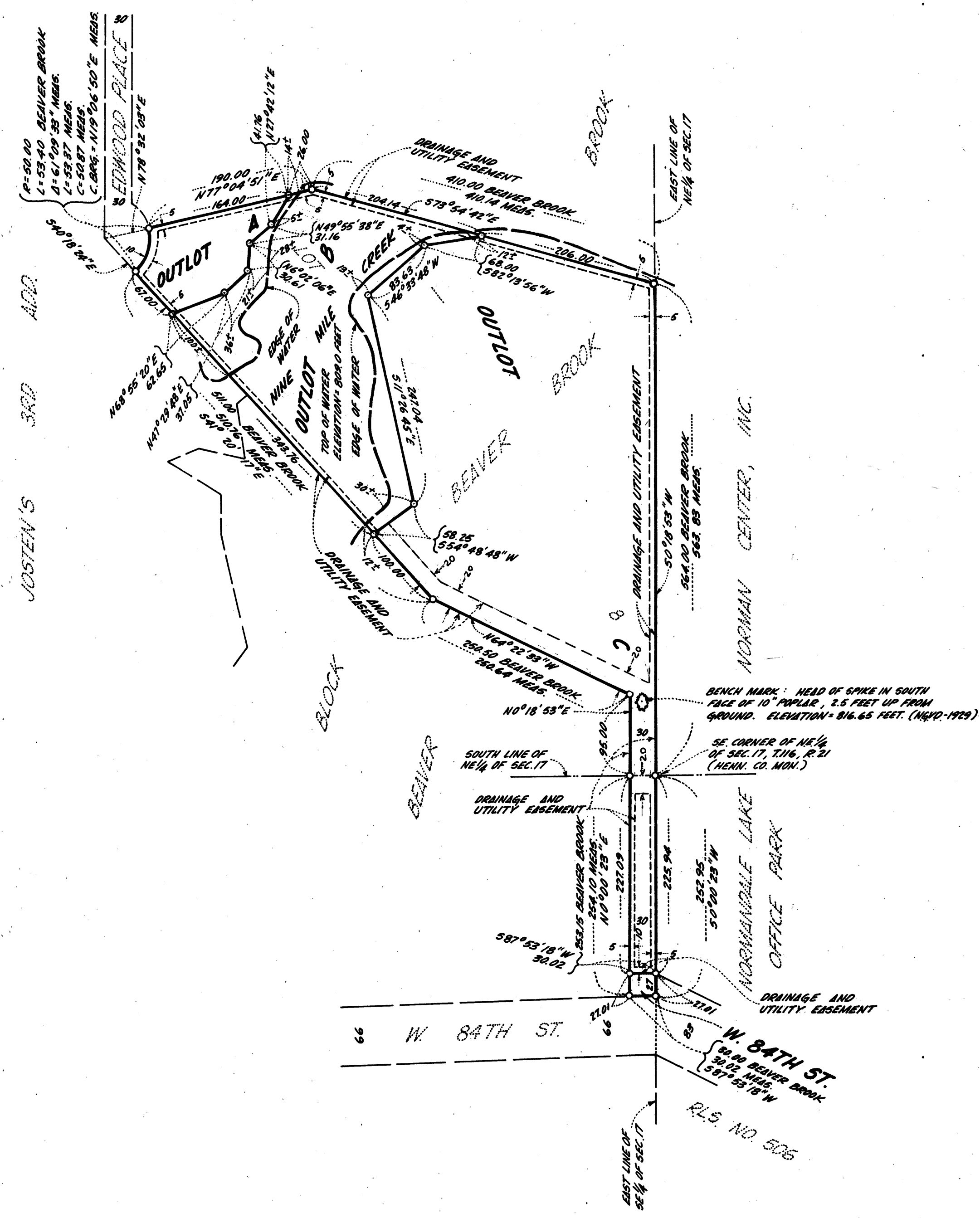
R.T. DOC. NO. _____

JOSTEN'S 4TH ADDITION

C.E. COULTER & ASSOCIATES, INC.
LAND SURVEYORS



ALL BEARINGS SHOWN ARE ASSUMED
o DENOTES IRON MONUMENT



KNOW ALL MEN BY THESE PRESENTS: That Normandale Lake Office Center Limited Partnership, a limited partnership, owner and proprietor of the following described property situated in the County of Hennepin, State of Minnesota, to wit:

Lot 8, Block 1, "BEAVER BROOK", according to the plat thereof on file and of record in the office of the County Recorder in and for said Hennepin County, Minnesota.

Has caused the same to be surveyed and platted as JOSTEN'S 4TH ADDITION and does hereby donate and dedicate to the public for the public use forever the Street and also dedicating the easements shown on this plat for drainage and utility purposes only.

In witness whereof said Normandale Lake Office Center Limited Partnership, a limited partnership, has caused these presents to be signed by its Managing General Partner this 8th day of April, 1986.

Signed: Normandale Lake Office Center Limited Partnership, a limited partnership
By Gopher III Limited Partnership, a limited partnership, its Managing General Partner
By Kirtland C. Woodhouse
Kirtland C. Woodhouse, Managing General Partner

STATE OF Minnesota
COUNTY OF Hennepin
The foregoing instrument was acknowledged before me this 8th day of April, 1986, by Kirtland C. Woodhouse, Managing General Partner of Gopher III Limited Partnership, a limited partnership, said Gopher III Limited Partnership being the Managing General Partner of Normandale Lake Office Center Limited Partnership, a limited partnership, on behalf of said limited partnership.

Lois Y. Engstrom
Notary Public, Hennepin County, Minnesota
My commission expires January 20, 1987

LOIS Y. ENGSTROM
NOTARY PUBLIC - MINNESOTA
HENNEPIN COUNTY
My commission expires Jan. 20, 1987

I hereby certify that I have surveyed and platted the property described on this 8th day of April, 1986, as JOSTEN'S 4TH ADDITION; that this plat is a correct representation of said survey; that all distances are correctly shown in feet and hundredths of a foot; that all monuments have been correctly placed in the ground as shown; and that the outside boundary lines are correctly designated.

John Coulter Peterson
John Coulter Peterson, Licensed Land Surveyor
Minnesota License No. 13792

STATE OF MINNESOTA
COUNTY OF HENNEPIN
The foregoing Surveyor's Certificate was acknowledged before me this 6th day of JANUARY, 1986
by John Coulter Peterson, Land Surveyor.

Frank R. Lenz Jr.
Notary Public, Hennepin County, Minnesota
My commission expires July 12, 1986

FRANK R. LENZ JR.
NOTARY PUBLIC - MINNESOTA
HENNEPIN COUNTY
My Commission Expires July 12, 1986

BLOOMINGTON, MINNESOTA
This plat of JOSTEN'S 4TH ADDITION was approved and accepted by the City Council of Bloomington, Minnesota, at a regular meeting thereof held this _____ day of _____ A. D. 198____. If applicable, the written comments and recommendations of the Commissioner of Transportation and County Highway Engineer have been received by the City or the prescribed 30 day period has elapsed without receipt of such comments and recommendations, as provided by Minn. Statutes, Section 505.03, Subd. 2.

CITY COUNCIL OF BLOOMINGTON, MINNESOTA
By _____ Mayor By _____ Manager

PROPERTY TAX AND PUBLIC RECORDS DEPARTMENT, HENNEPIN COUNTY, MINNESOTA
I hereby certify that taxes payable in _____ and prior years have been paid for land described on this plat. Dated this _____ day of _____, 198____.

Dale G. Folstad,
Hennepin County Auditor By _____, Deputy

SURVEY DIVISION, HENNEPIN COUNTY, MINNESOTA
Pursuant to Chapter 810, Minnesota Laws of 1969, this plat has been approved this _____ day of _____, 198____.

Robert L. Bakka
Hennepin County Surveyor, By _____

REGISTRAR OF TITLES, HENNEPIN COUNTY, MINNESOTA
I hereby certify that the within plat of JOSTEN'S 4TH ADDITION was filed in this office this _____ day of _____, 198____ at _____ o'clock _____ M.

R. Dan Carlson
Registrar of Titles, By _____ Deputy