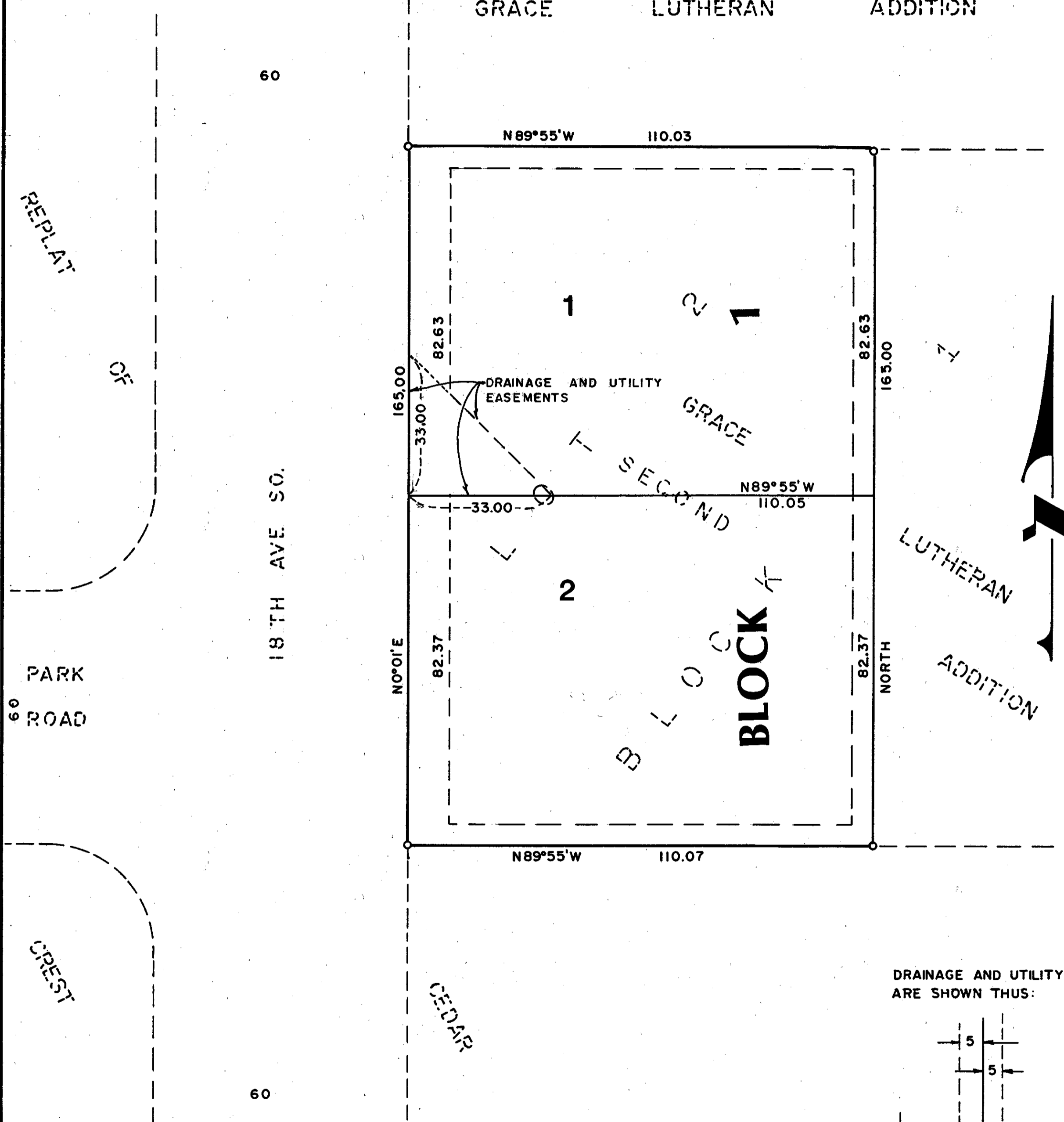


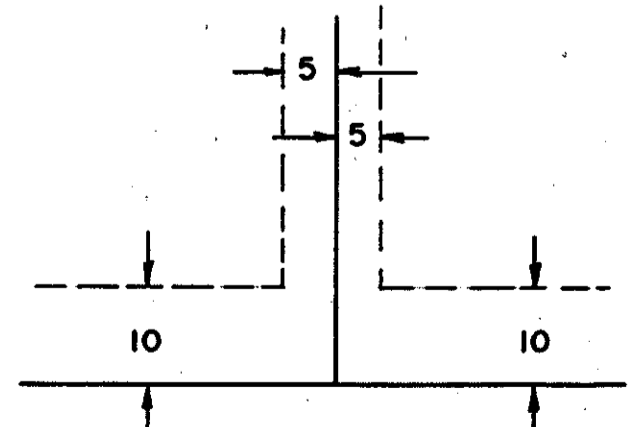
HOOVER ADDITION

GRACE LUTHERAN ADDITION

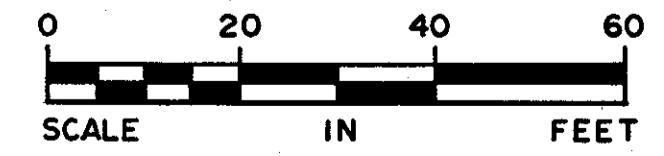


DRAINAGE AND UTILITY EASEMENTS

DRAINAGE AND UTILITY EASEMENTS ARE SHOWN THUS:



Being 5 feet in width and adjoining lot lines and 10 feet in width and adjoining street lines as shown on the plat.



○ DENOTES IRON MONUMENT
ALL BEARINGS SHOWN ARE ASSUMED

KNOW ALL MEN BY THESE PRESENTS: That Anderson - Keith Builders, Inc., a Minnesota corporation, fee owner and Minnesota Federal Savings and Loan Association, a United States Corporation, mortgagee and Paul H. Hoover and Joan M. Hoover, husband and wife, and Earl L. Hoover and Phyllis E. Hoover, husband and wife, contract purchasers of the following described property situated in the County of Hennepin, State of Minnesota, to wit:

Lot 2, Block 1, GRACE LUTHERAN SECOND ADDITION, according to the plat thereof on file or of record in the office of the Registrar of Titles, said Hennepin County, Minnesota.

Have caused the same to be surveyed and platted as HOOVER ADDITION and do hereby donate and dedicate to the public, for public use forever, the drainage and utility easements as shown on said plat. In witness whereof said Anderson - Keith Builders, Inc., a Minnesota Corporation, has caused these presents to be signed by its proper officers and its corporate seal to be hereunto affixed this 20th day of AUGUST, 1984. And in witness whereof said Minnesota Federal Savings and Loan Association, a United States Corporation, has caused these presents to be signed by its proper officers this 20th day of AUGUST, 1984. And in witness whereof said Paul H. Hoover and Joan M. Hoover, husband and wife, and Earl L. Hoover and Phyllis E. Hoover, husband and wife, have set their hands this _____ day of _____, 1984.

ANDERSON - KEITH BUILDERS, INC.
Everett J. Keith President
Ronald E. Anderson Vice-President

MINNESOTA FEDERAL SAVINGS AND LOAN ASSOCIATION
 By: Paul H. Hoover Its: Joan M. Hoover
 By: Earl L. Hoover Its: Phyllis E. Hoover

STATE OF MINNESOTA
 COUNTY OF HENNEPIN
 The foregoing instrument was acknowledged before me this 23 day of May, 1984, by Everett J. Keith, president and Ronald E. Anderson, vice-president of said Anderson Keith Builders, Inc., a Minnesota corporation on behalf of said corporation.

GEORGE F. CUMMINGS
 NOTARY PUBLIC - MINNESOTA
 HENNEPIN COUNTY
 My Commission Expires March 27, 1991

George F. Cummings
 Notary Public, Hennepin County, Minnesota
 My Commission Expires 5 27 91

STATE OF MINNESOTA
 COUNTY OF HENNEPIN
 The foregoing instrument was acknowledged before me this 20th day of August, 1984, by Paul H. Hoover and Joan M. Hoover, husband and wife, and Earl L. Hoover and Phyllis E. Hoover, husband and wife, on behalf of said Minnesota Federal Savings and Loan Association, a United States corporation on behalf of said corporation.

ANITA M. MAHLER
 NOTARY PUBLIC - MINNESOTA
 DAKOTA COUNTY
 MY COMM. EXPIRES OCT. 4, 1988

Anita M. Mahler
 Notary Public, Hennepin County, Minnesota
 My Commission Expires Oct. 4, 1988

STATE OF MINNESOTA
 COUNTY OF HENNEPIN
 The foregoing instrument was acknowledged before me this 17 day of May, 1984, by Paul H. Hoover and Joan M. Hoover, husband and wife, and Earl L. Hoover and Phyllis E. Hoover, husband and wife.

GEORGE F. CUMMINGS
 NOTARY PUBLIC - MINNESOTA
 HENNEPIN COUNTY
 My Commission Expires March 27, 1991

George F. Cummings
 Notary Public, Hennepin County, Minnesota
 My Commission Expires March 27, 1991

I hereby certify that I have surveyed and platted the property described on this plat as HOOVER ADDITION; that this plat is a correct representation of said survey; that all distances are correctly shown on said plat in feet and hundredths of a foot; that all monuments have been correctly placed in the ground as shown; that the outside boundary lines are correctly designated; and that there are no wetlands or public highways to be designated on said plat.

Calvin H. Hedlund
 Calvin H. Hedlund, Land Surveyor
 Minnesota License No. 5942

STATE OF MINNESOTA
 COUNTY OF HENNEPIN
 The foregoing Surveyors Certificate was acknowledged before me this 16th day of April, 1984, by Calvin H. Hedlund, Land Surveyor, Minnesota License No. 5942.

FREDERIC E. HAAS
 NOTARY PUBLIC - MINNESOTA
 HENNEPIN COUNTY
 My Commission Expires June 2, 1989

Frederic E. Haas
 Notary Public, Hennepin County, Minnesota
 My Commission Expires JUNE 2, 1989

BLOOMINGTON, MINNESOTA
 This plat of HOOVER ADDITION was approved and accepted by the City Council of the City of Bloomington, Minnesota at a regular meeting thereof held this _____ day of _____, 1984. If applicable, the written comments and recommendations of the Commissioner of Transportation and the County Highway Engineer have been received by the City or the prescribed 30 day period has elapsed without receipt of such comments and recommendations, as provided by Minn. Statutes, Section 505.03, Subd. 2.

CITY COUNCIL OF BLOOMINGTON, MINNESOTA
 By: _____ Its Mayor By: _____ Its Manager

PROPERTY TAXATION DEPARTMENT, Hennepin County, Minnesota
 I hereby certify that there are no delinquent taxes for all years prior to 19____ for land described on this plat. Dated this _____ day of _____, 1984.

Vernon T. Hoppe, Director By: _____ Tax Clerk

SURVEY DIVISION, Hennepin County, Minnesota
 Pursuant to Chapter 810, Minnesota Laws of 1969, this plat has been approved this _____ day of _____, 1984.

Robert L. Bakka, Hennepin County Surveyor By: _____

REGISTRAR OF TITLES, Hennepin County, Minnesota
 I hereby certify that the within plat of HOOVER ADDITION was filed for record in this office this _____ day of _____, 1984, at _____ o'clock __.M.

R. Dan Carlson, Registrar of Titles By: _____ Deputy

