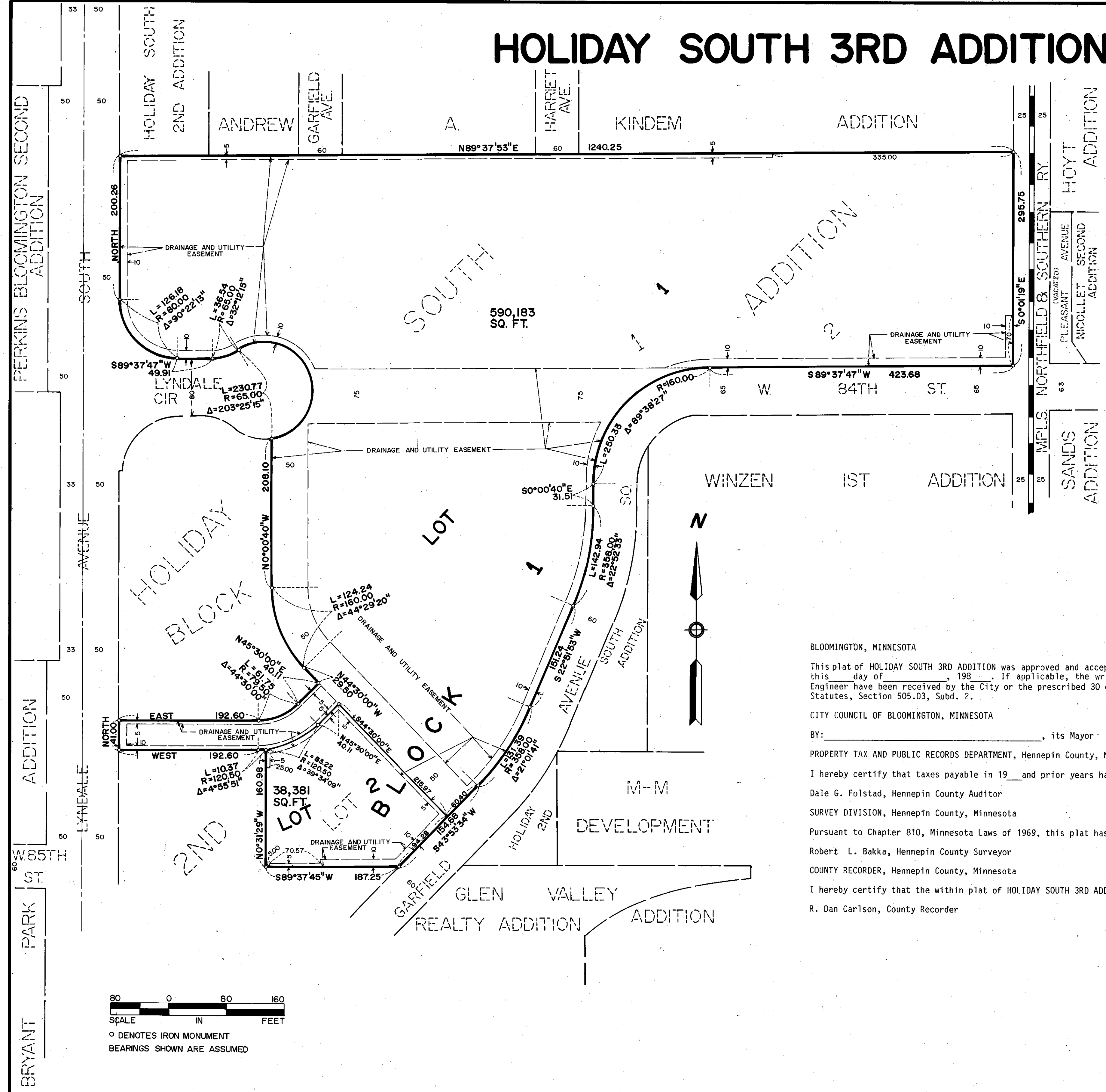


HOLIDAY SOUTH 3RD ADDITION

C.R. DOC. NO. _____



KNOW ALL MEN BY THESE PRESENTS: That LYNDALÉ TERMINAL CO., a Minnesota Corporation, owner and proprietor of the following described property situated in the County of Hennepin, State of Minnesota to wit:

Lot 2, Block 1, HOLIDAY SOUTH 2ND ADDITION, according to the recorded plat thereof, Hennepin County, Minnesota.

Has caused the same to be surveyed and platted as HOLIDAY SOUTH 3RD ADDITION and does hereby donate and dedicate to the public, for public use forever, the drainage and utility easements as shown on said plat.

In witness whereof said LYNDALÉ TERMINAL CO., a Minnesota Corporation, has caused these presents to be signed by its proper officers and its corporate seal to be hereunto affixed this 15th day of May, 1986.

LYNDALÉ TERMINAL CO.

SIGNED: Donovan A. Erickson its President
Ronald A. Erickson its Secretary

STATE OF MINNESOTA
 COUNTY OF Hennepin

The foregoing instrument was acknowledged before me this 15th day of May, 1986 by Donovan A. Erickson its President and Ronald A. Erickson its Secretary of said LYNDALÉ TERMINAL CO., a Minnesota Corporation, on behalf of said corporation.



Jerome A. Jensen
 Notary Public, Hennepin County, Minnesota
 My Commission Expires Jan. 17, 1990

I hereby certify that I have surveyed and platted the property described on this plat as HOLIDAY SOUTH 3RD ADDITION; that this plat is a correct representation of said survey; that all distances are correctly shown in feet and hundredths of a foot; that all monuments have been correctly placed in the ground as shown; that the outside boundary lines are correctly designated and that there are no wetlands or public highways to be designated on said plat.

Edward H. Sunde
 Land Surveyor
 Minnesota License No. 8612

STATE OF MINNESOTA
 COUNTY OF Hennepin

The foregoing surveyor's certificate was acknowledged before me this 13th day of May, 1986 by Edward H. Sunde, Land Surveyor.



John K. Barnes
 Notary Public, Hennepin County, Minnesota
 My Commission Expires SEPTEMBER 26, 1991

BLOOMINGTON, MINNESOTA

This plat of HOLIDAY SOUTH 3RD ADDITION was approved and accepted by the City Council of the City of Bloomington, Minnesota at a regular meeting thereof held this ___ day of ___, 198_. If applicable, the written comments and recommendations of the Commissioner of Transportation and the County Highway Engineer have been received by the City or the prescribed 30 day period has elapsed without receipt of such comments and recommendations, as provided by Minn. Statutes, Section 505.03, Subd. 2.

CITY COUNCIL OF BLOOMINGTON, MINNESOTA

BY: _____, its Mayor BY: _____, its Manager

PROPERTY TAX AND PUBLIC RECORDS DEPARTMENT, Hennepin County, Minnesota

I hereby certify that taxes payable in 19__ and prior years have been paid for land described on this plat. Dated this ___ day of ___, 198_.

Dale G. Folstad, Hennepin County Auditor

BY: _____ Deputy

SURVEY DIVISION, Hennepin County, Minnesota

Pursuant to Chapter 810, Minnesota Laws of 1969, this plat has been approved this ___ day of ___, 198_.

Robert L. Bakka, Hennepin County Surveyor

BY: _____

COUNTY RECORDER, Hennepin County, Minnesota

I hereby certify that the within plat of HOLIDAY SOUTH 3RD ADDITION was filed in this office this ___ day of ___, 198_ at ___ o'clock __.M.

R. Dan Carlson, County Recorder

BY: _____, Deputy