



## HENNEPIN COUNTY STATE AID HIGHWAY

H-127

R.T.DOC.NO. 1739505  
C.R.DOC.NO. 5132878

## NO. 1, PLAT 64

Those parts embraced within Section 20, Township 27, Range 24 described as follows:

Part of Tract Y, Registered Land Survey No. 63,  
Part of Tracts B and C, Registered Land Survey No. 272,  
Part of Tracts A, B, C and D, Registered Land Survey No. 725,  
Part of Tracts A, C and D, Registered Land Survey No. 824,  
Part of Lot 8, "DUNDEE MANOR",  
Part of Lots 4 and 6, Block 1, REARRANGEMENT OF LOTS 195 & 196 WALESWOOD PARK,  
Part of Lots 168, 177 and 194, "Waleswood Park" Hennepin County, Minn.,  
Part of the Northwest Quarter of the Southwest Quarter,  
Part of the Northeast Quarter of the Southwest Quarter,  
Part of the Southeast Quarter of the Northwest Quarter,  
Part of the Southwest Quarter of the Northeast Quarter,  
Part of the Southeast Quarter of the Northeast Quarter,  
Part of the Northeast Quarter of the Northeast Quarter.

Those parts embraced within Section 21, Township 27, Range 24 described as follows:

Part of the Northwest Quarter of the Northwest Quarter.

Those parts embraced within Section 32, Township 116, Range 21 described as follows:

Part of Lot 1, Block 1, L.M.J. 2ND ADDITION,  
Part of the Southwest Quarter of the Southwest Quarter,  
Part of the Northeast Quarter of the Southwest Quarter,  
Part of the Northwest Quarter of the Southeast Quarter,  
Part of the Southwest Quarter of the Southeast Quarter,  
Part of the Northeast Quarter of the Southeast Quarter,  
Part of the Southeast Quarter of the Southeast Quarter.

Those parts embraced within Section 33, Township 116, Range 21 described as follows:

Part of Government Lot 4.

This plat, compiled and prepared jointly by the Right-of-Way Division and the Survey Division, Hennepin County Bureau of Public Service, is hereby certified as the official plat of HENNEPIN COUNTY STATE AID HIGHWAY NO. 1, PLAT 64 as shown, pursuant to Minnesota Statutes 160.14 and 505.1792 as amended, and filed pursuant to Board Resolution dated October 28, 1969.

DATE July 14, 1986 COUNTY OF HENNEPIN  
BOARD OF COUNTY COMMISSIONERS

Sam S. Sivakich  
Sam S. Sivakich  
Chairman

DATE July 9, 1986 COUNTY OF HENNEPIN  
BUREAU OF PUBLIC SERVICE

David D. Swenson  
David D. Swenson  
Principal Right-of-Way Agent

I hereby certify that this plat was prepared by me or under my direct supervision this 14th day of July, 1986, and, that I am a duly Registered Land Surveyor under the laws of the State of Minnesota.

Gary L. Backer  
Acting Hennepin County Surveyor, MN License No. 10948

REGISTRAR OF TITLES, Hennepin County, Minnesota

I hereby certify that the within plat of HENNEPIN COUNTY STATE AID HIGHWAY NO. 1, PLAT 64 was filed in this office this 17th day of July, 1986 at 2:20 o'clock A. M.

R. Dan Carlson, County Recorder, by R. Odyne  
Deputy

COUNTY RECORDER, Hennepin County, Minnesota

I hereby certify that the within plat of HENNEPIN COUNTY STATE AID HIGHWAY NO. 1, PLAT 64 was filed in this office this 17th day of July, 1986 at 1:50 o'clock A. M.

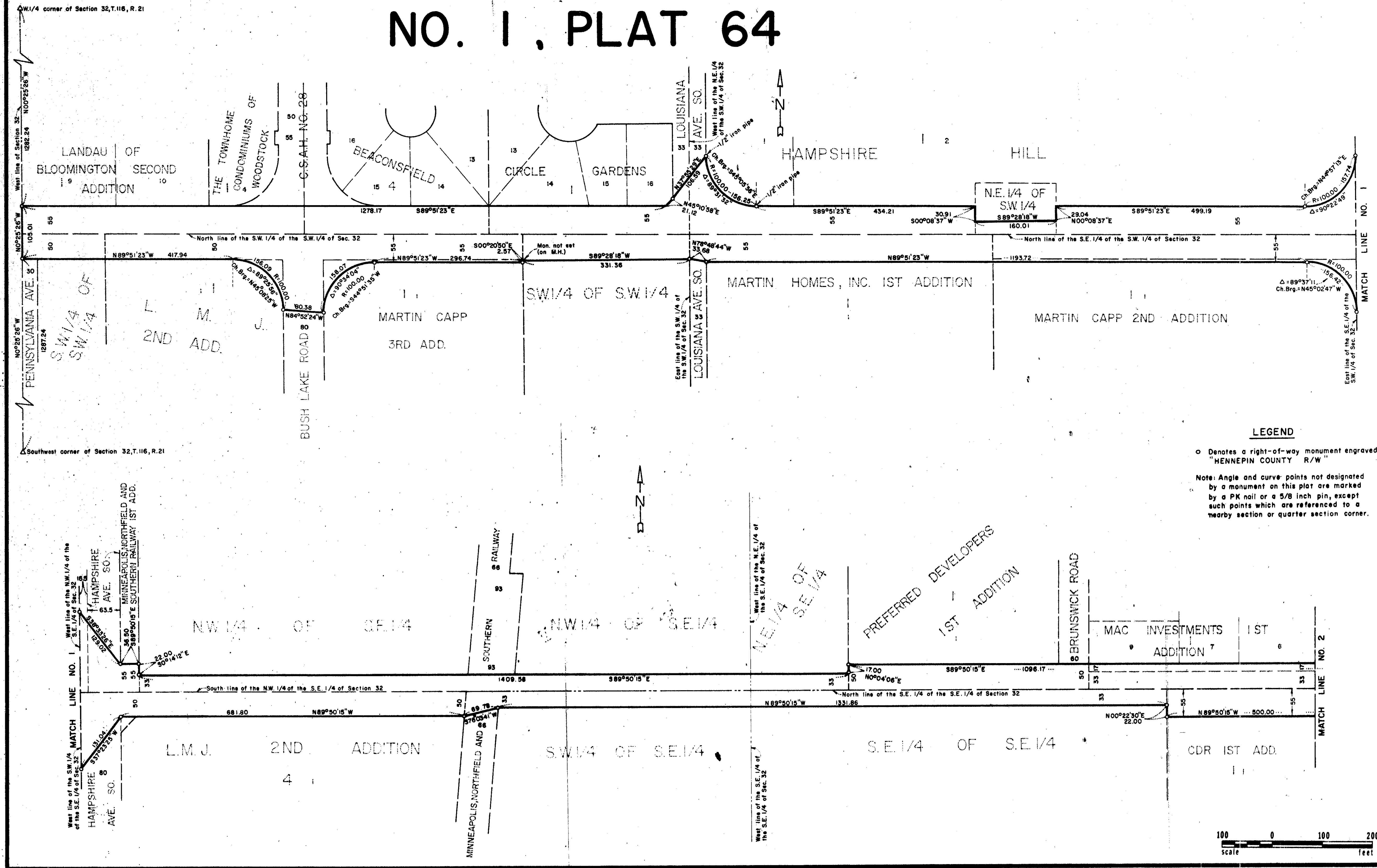
R. Dan Carlson, County Recorder, by Deputy  
Deputy



# HENNEPIN COUNTY STATE AID HIGHWAY H-127

R.T.DOC.NO. 505  
C.R.DOC.NO. 5232878

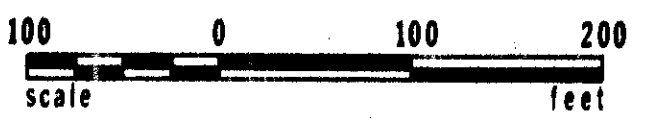
## NO. 1, PLAT 64



### LEGEND

○ Denotes a right-of-way monument engraved "HENNEPIN COUNTY R/W"

Note: Angle and curve points not designated by a monument on this plat are marked by a PK nail or a 5/8 inch pin, except such points which are referenced to a nearby section or quarter section corner.

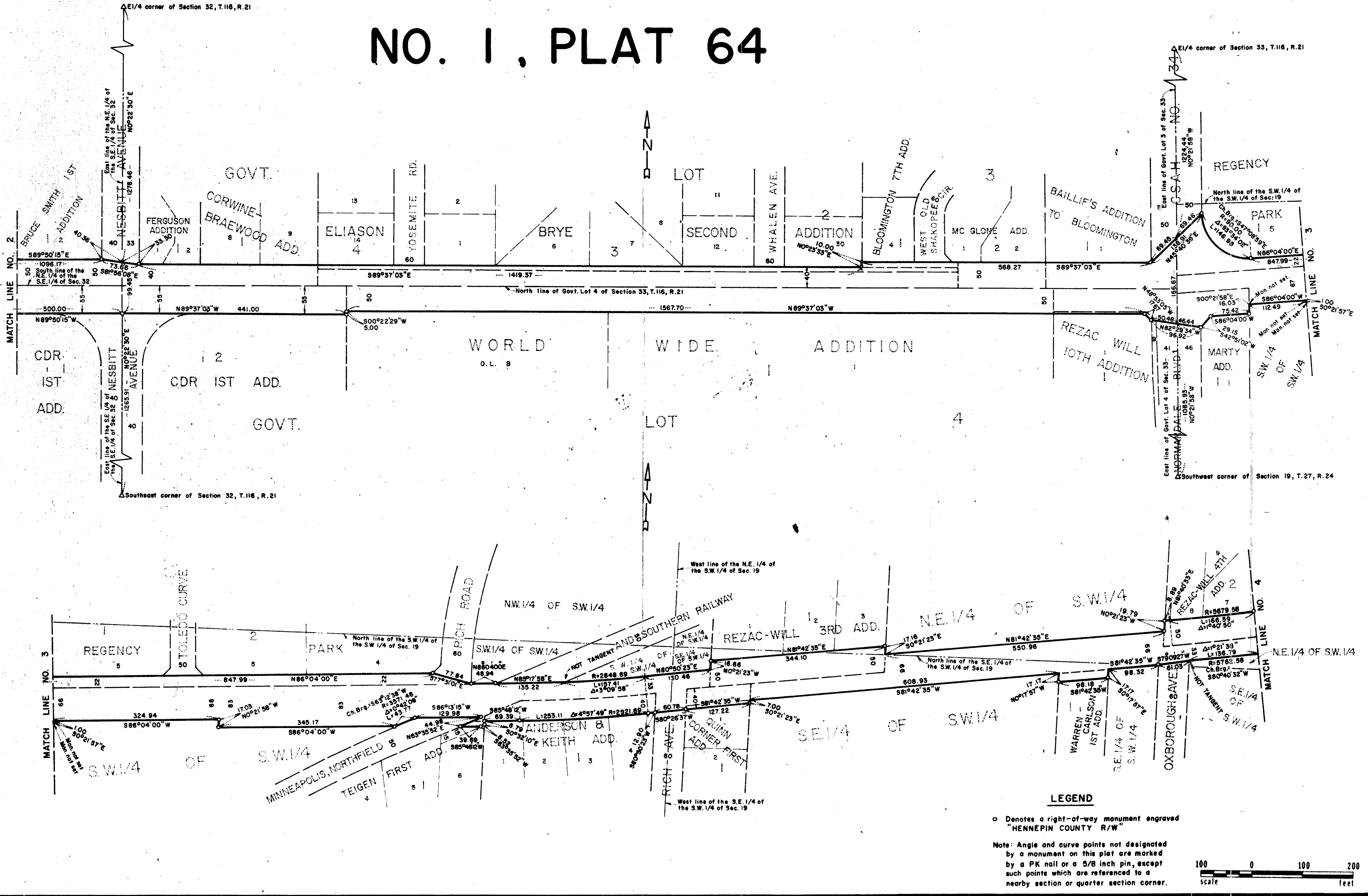




# HENNEPIN COUNTY STATE AID HIGHWAY NO. 1, PLAT 64

H-127

R.T.DOC. NO. 1789505  
C.R.DOC. NO. 5132273



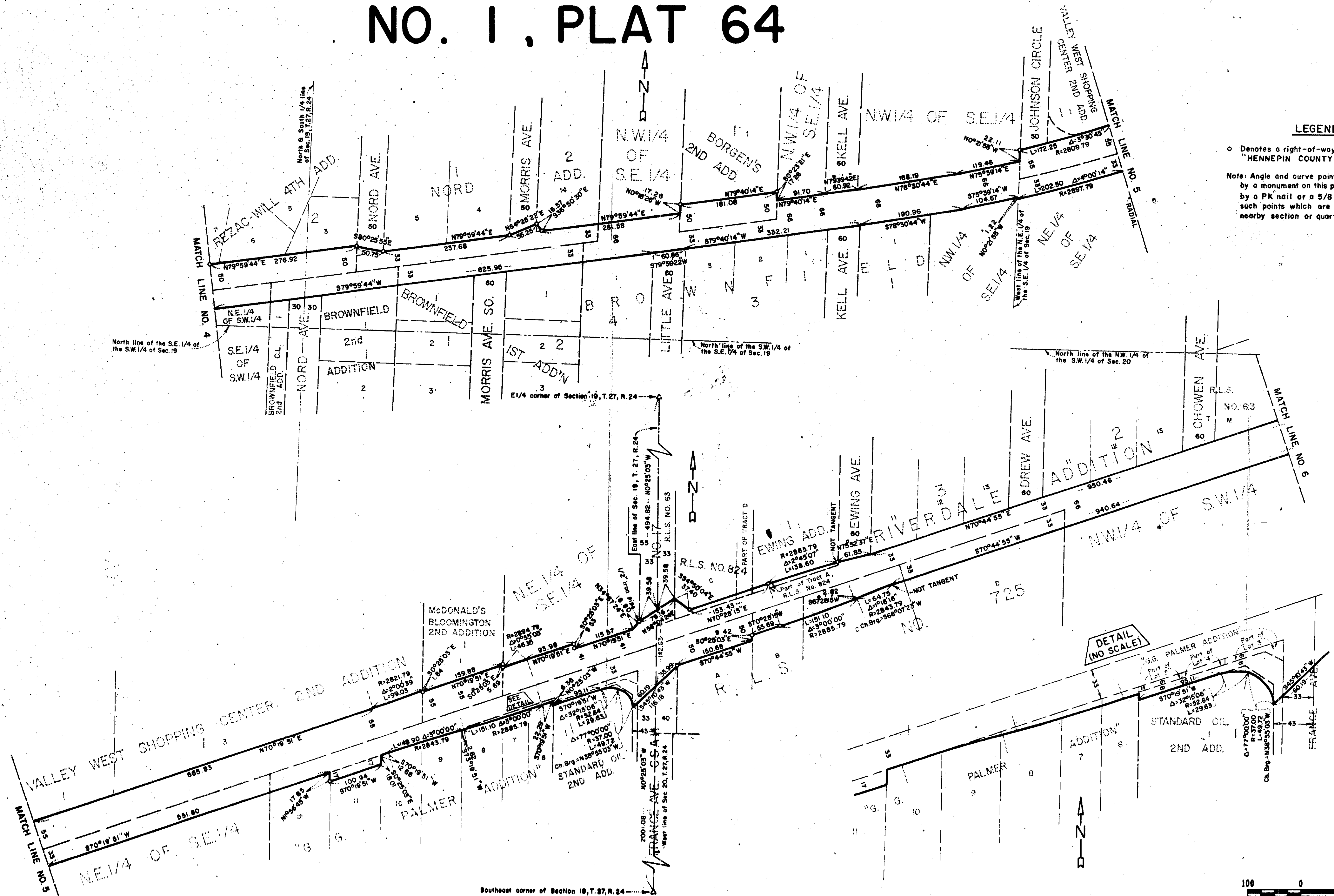


# HENNEPIN COUNTY STATE AID HIGHWAY

H-127

R.T.DOC.NO. 1734505  
C.R.DOC.NO. 5134378

## NO. 1, PLAT 64



### LEGEND

○ Denotes a right-of-way monument engraved "HENNEPIN COUNTY R/W"

Note: Angle and curve points not designated by a monument on this plat are marked by a PK nail or a 5/8 inch pin, except such points which are referenced to a nearby section or quarter section corner.

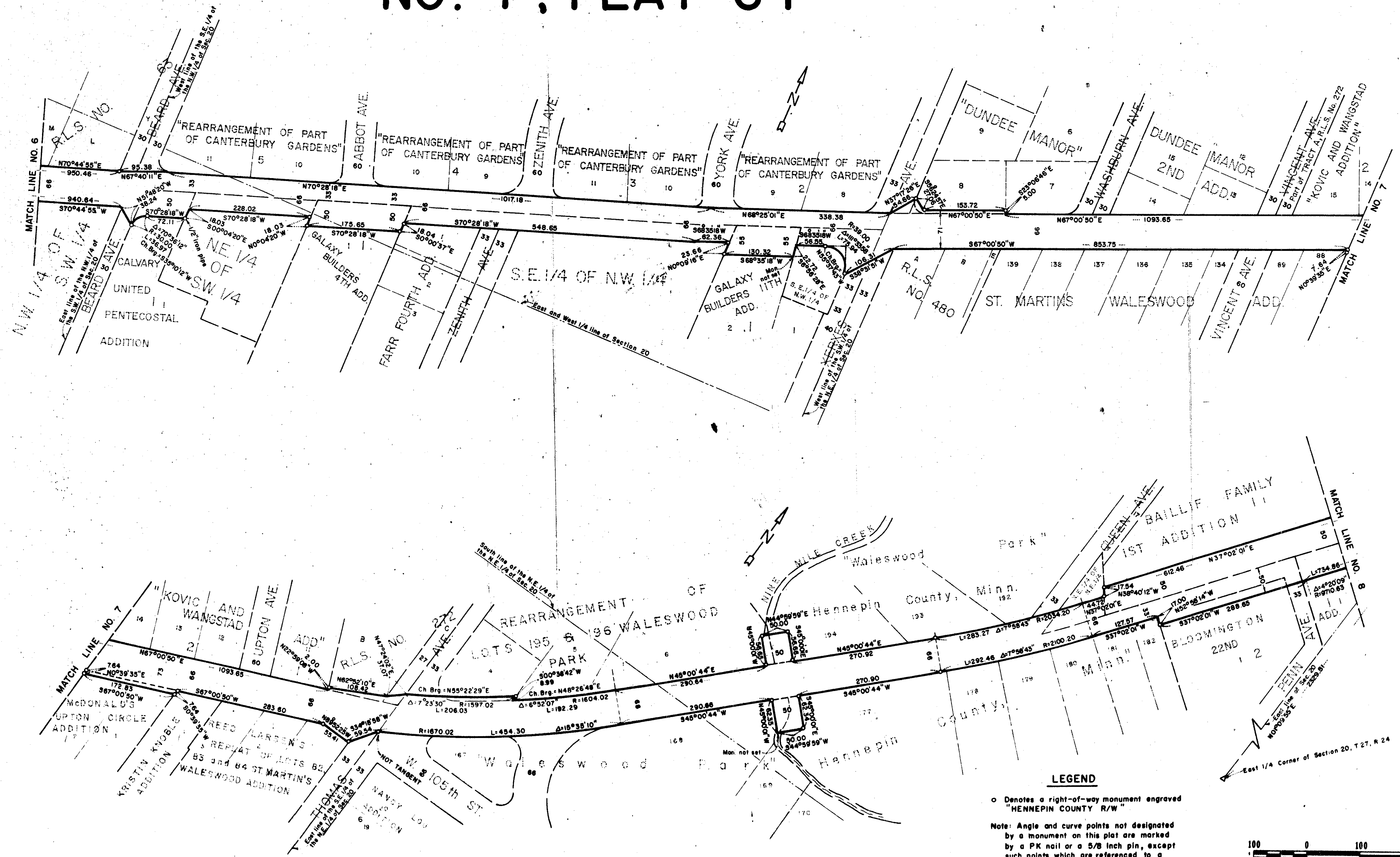




# HENNEPIN COUNTY STATE AID HIGHWAY NO. 1, PLAT 64

H-127

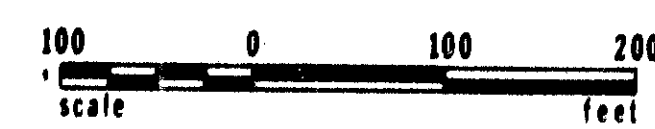
R.T.DOC.NO. 1739505  
C.R.DOC.NO. 5132878



**LEGEND**

○ Denotes a right-of-way monument engraved "HENNEPIN COUNTY R/W"

Note: Angle and curve points not designated by a monument on this plat are marked by a PK nail or a 5/8 inch pin, except such points which are referenced to a nearby section or quarter section corner.

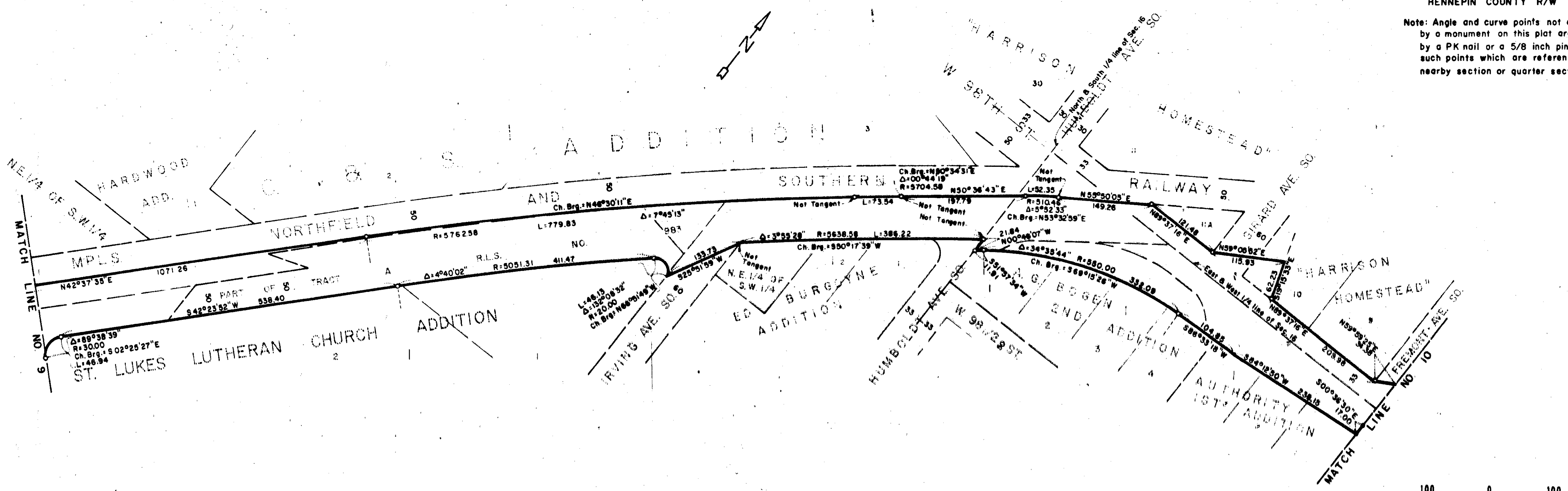
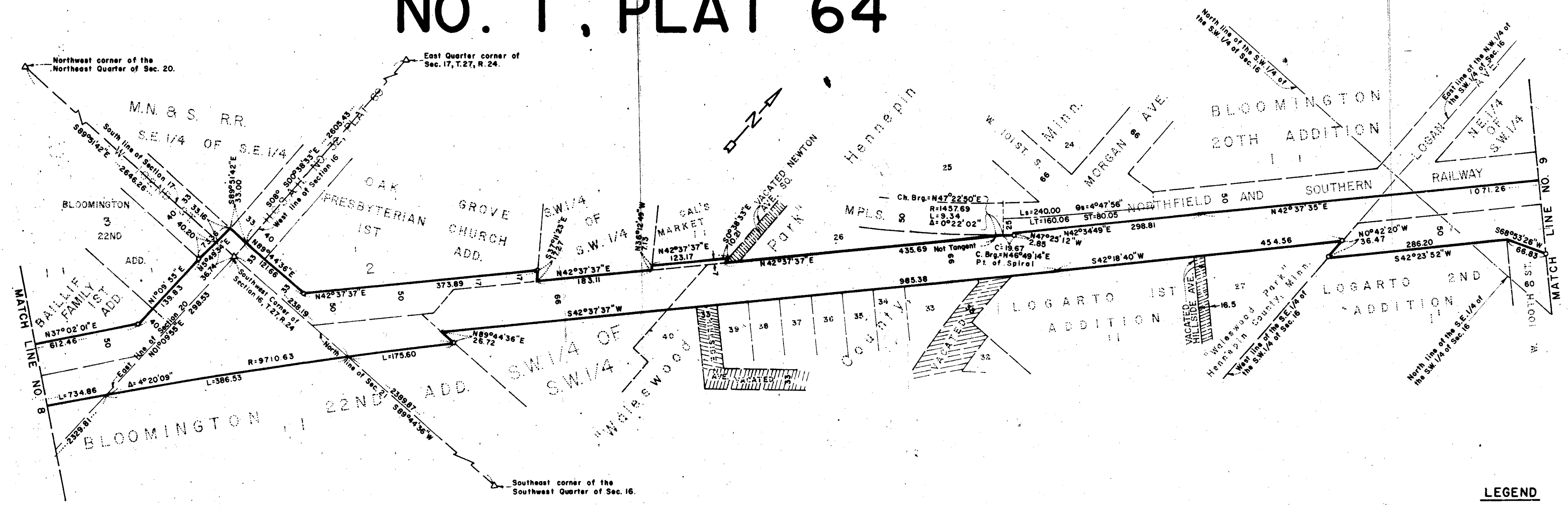




H-127

# HENNEPIN COUNTY STATE AID HIGHWAY NO. 1, PLAT 64

R.T.DOC.NO. 1739505  
C.R.DOC.NO. 5132278



### LEGEND

○ Denotes a right-of-way monument engraved "HENNEPIN COUNTY R/W"

Note: Angle and curve points not designated by a monument on this plat are marked by a PK nail or a 5/8 inch pin, except such points which are referred to a nearby section or quarter section corner.

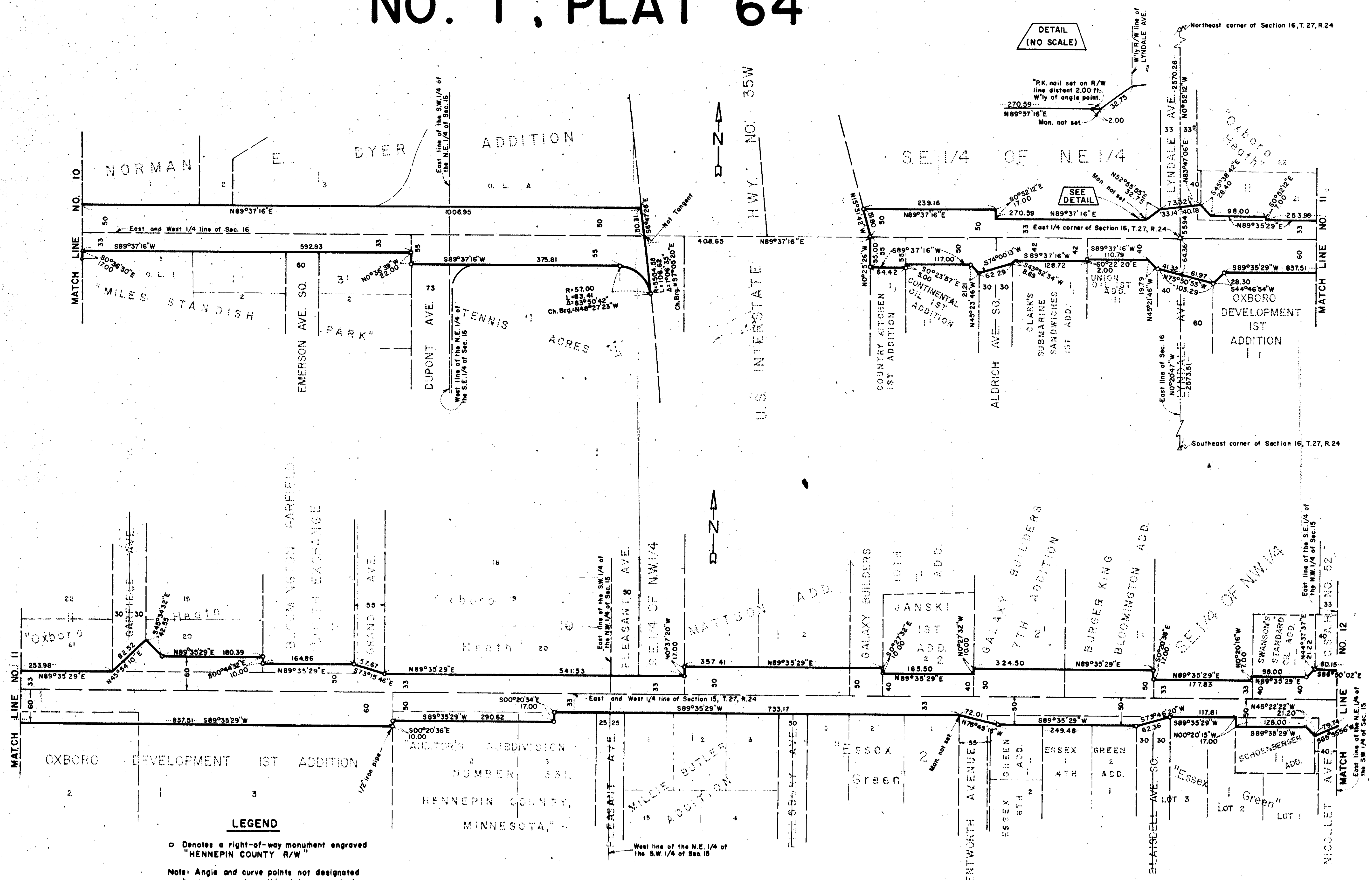




# HENNEPIN COUNTY STATE AID HIGHWAY H-127

## NO. 1, PLAT 64

R.T.DOC.NO. 1738505  
C.R.DOC.NO. 5132872



DETAIL (NO SCALE)

SEE DETAIL

### LEGEND

○ Denotes a right-of-way monument engraved "HENNEPIN COUNTY R/W"

Note: Angle and curve points not designated by a monument on this plat are marked by a PK nail or a 5/8 inch pin, except such points which are referenced to a nearby section or quarter section corner.

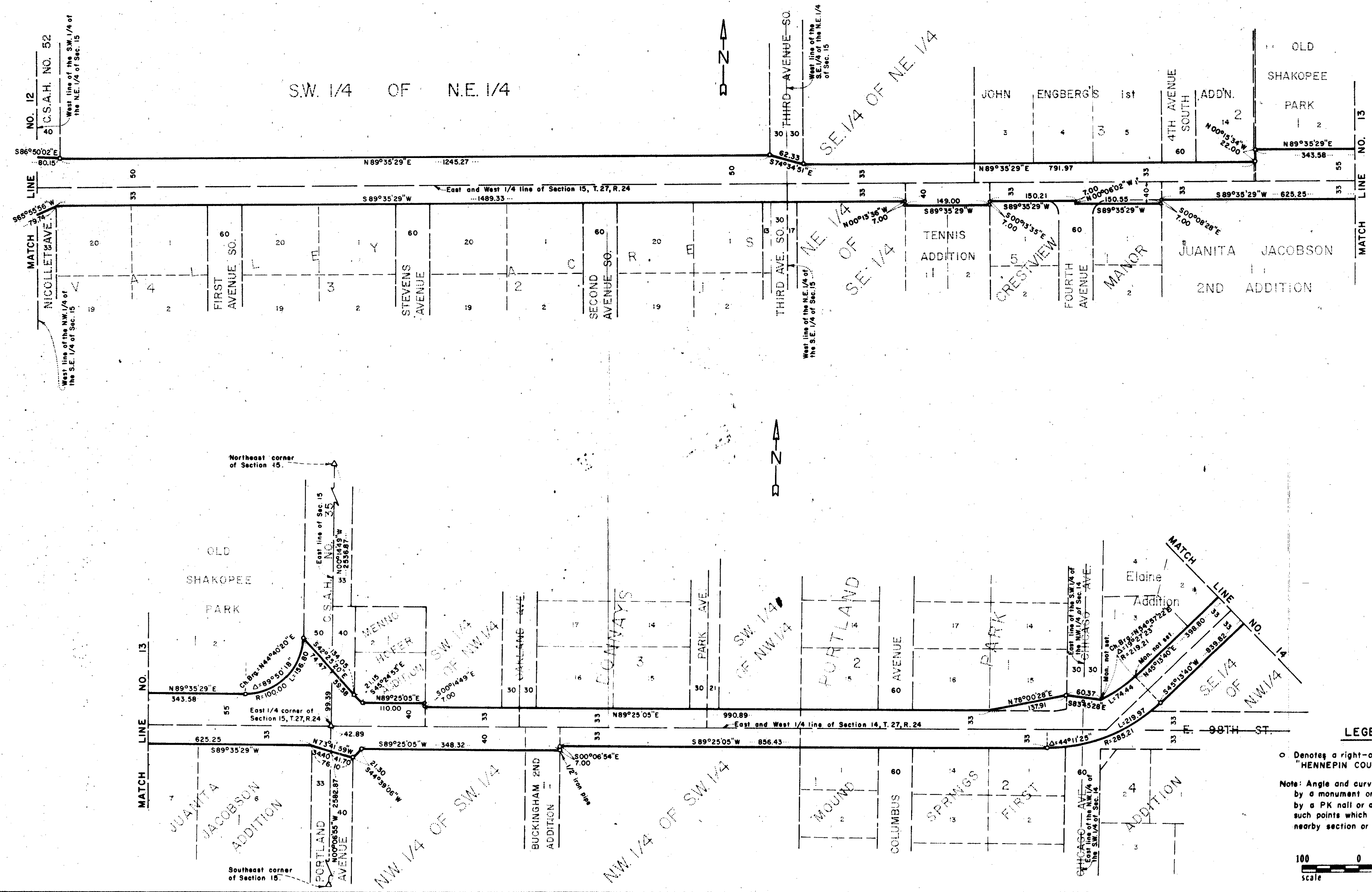




# HENNEPIN COUNTY STATE AID HIGHWAY NO. 1, PLAT 64

H-127

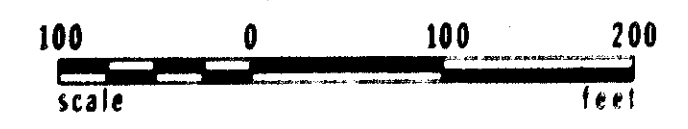
R.T.DOC.NO. 1789505  
C.R.DOC.NO. 1206278



### LEGEND

○ Denotes a right-of-way monument engraved "HENNEPIN COUNTY R/W"

Note: Angle and curve points not designated by a monument on this plat are marked by a PK nail or a 5/8 inch pin, except such points which are referenced to a nearby section or quarter section corner.





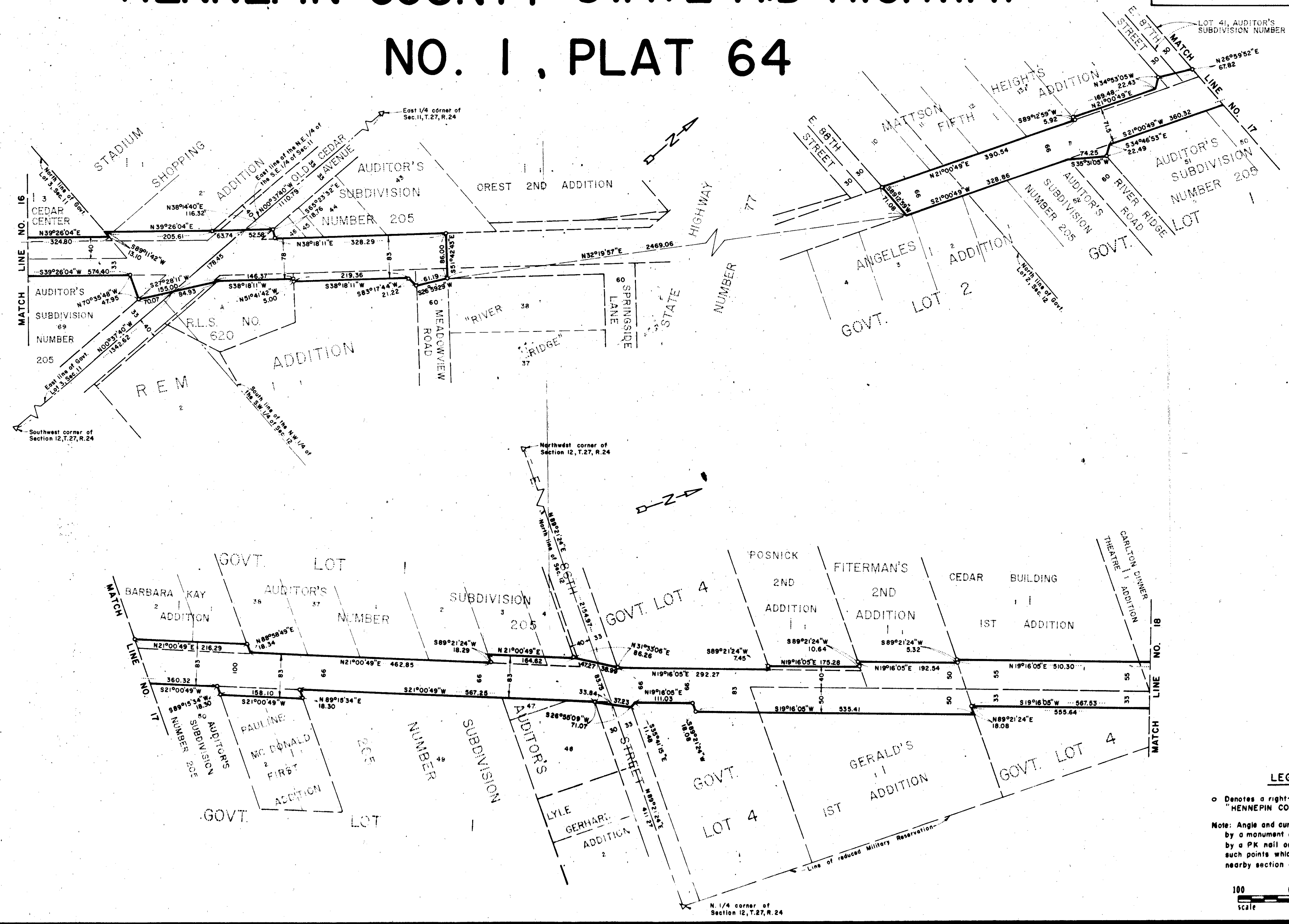




# HENNEPIN COUNTY STATE AID HIGHWAY NO. 1, PLAT 64

H-127

R.T.DOC.NO. 1739505  
C.R.DOC.NO. 518,778



**LEGEND**

○ Denotes a right-of-way monument engraved "HENNEPIN COUNTY R/W"

Note: Angle and curve points not designated by a monument on this plat are marked by a PK nail or a 5/8 inch pin, except such points which are referenced to a nearby section or quarter section corner.



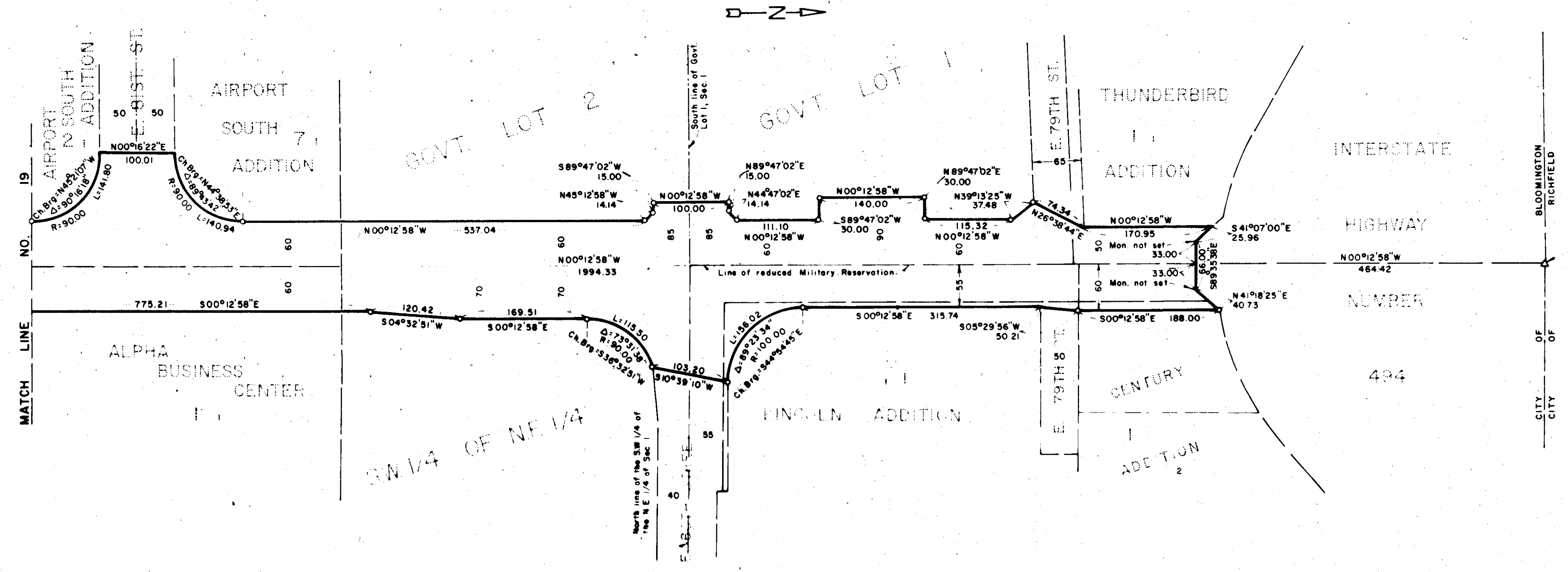
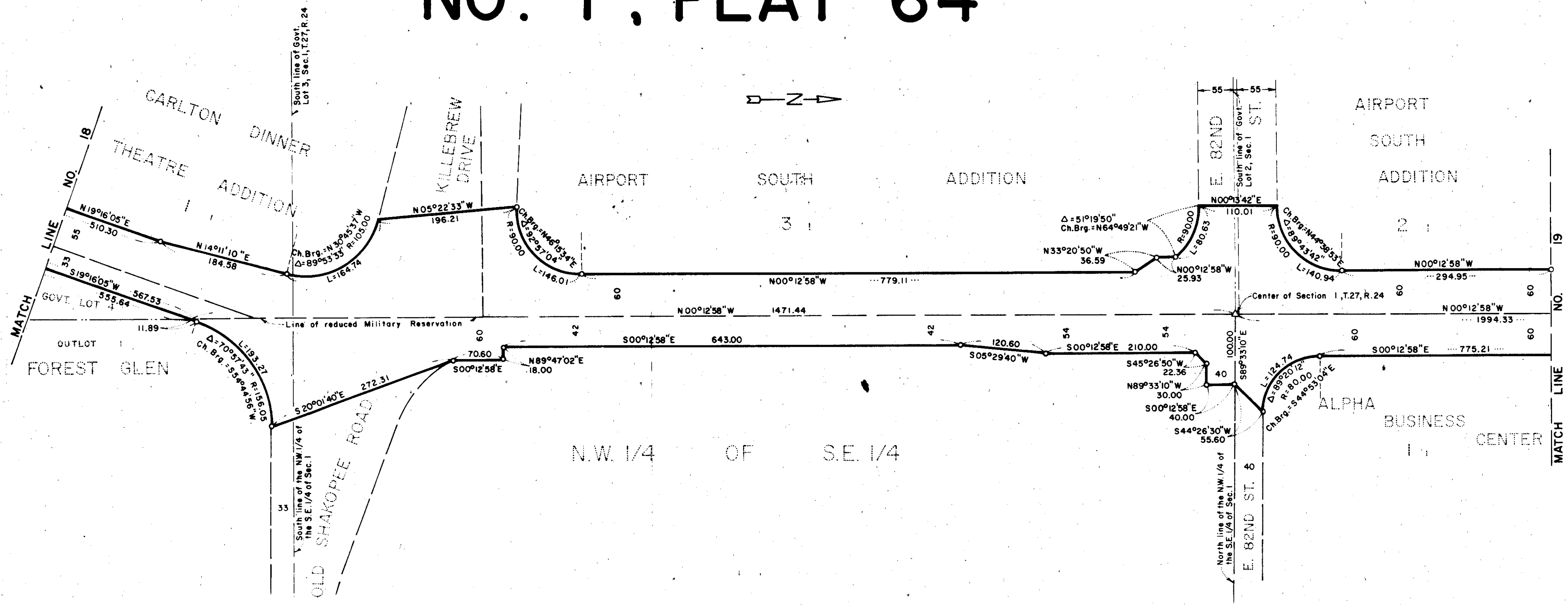


# HENNEPIN COUNTY STATE AID HIGHWAY

H-127

R.T.DOC.NO. 1789505  
C.R.DOC.NO. 128375

## NO. 1, PLAT 64



**LEGEND**

○ Denotes a right-of-way monument engraved "HENNEPIN COUNTY R/W"

Note: Angle and curve points not designated by a monument on this plat are marked by a PK nail or a 5/8 inch pin, except such points which are referenced to a nearby section or quarter section corner.

