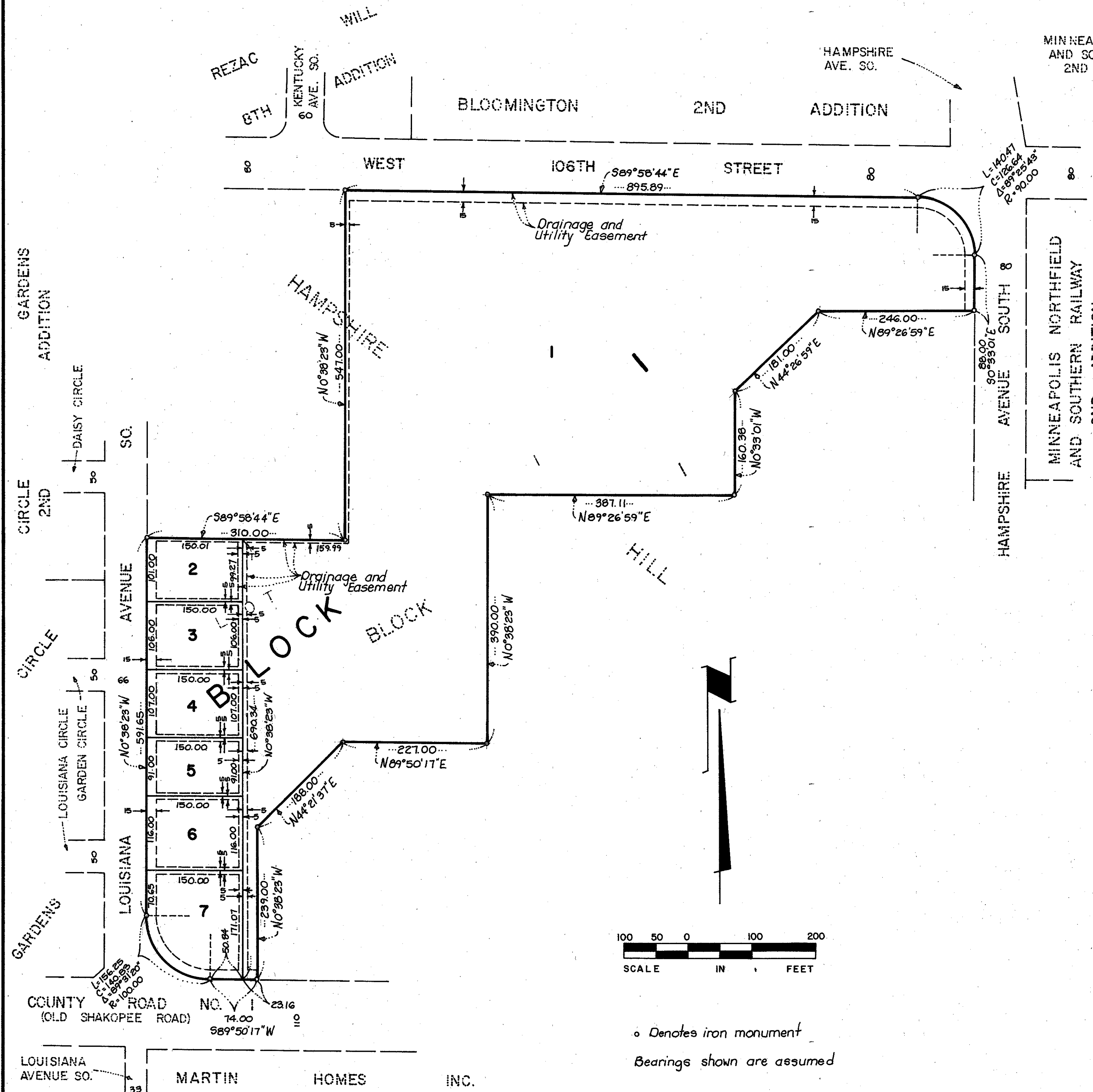


HAMPSHIRE HILL 2ND ADDITION

C.R. DOC. NO. _____



KNOW ALL MEN BY THESE PRESENTS: That HRC Company, Inc., a Minnesota corporation, fee owner, and First National Bank of Minneapolis, a national banking association, mortgagee, of the following described property situated in the State of Minnesota, County of Hennepin, to wit:

Lot 1, Block 1, HAMPSHIRE HILL, according to the recorded plat thereof.

Have caused the same to be surveyed and platted as HAMPSHIRE HILL 2ND ADDITION and do hereby donate and dedicate to the public for public use forever the drainage and utility easements as shown on the plat.

In witness whereof said HRC Company, Inc., a Minnesota corporation, has caused these presents to be signed by its proper officer this 7th day of August, 1986, and said First National Bank of Minneapolis, a national banking association, has caused these presents to be signed by its proper officers this _____ day of _____, 19____.

SIGNED:

HRC COMPANY, INC.
By Robert T. York its ASSISTANT SECRETARY

FIRST NATIONAL BANK OF MINNEAPOLIS
By John M. Nelson its ASST VICE PRESIDENT
By R. J. Stadium its ASST VICE PRESIDENT

STATE OF MINNESOTA
COUNTY OF HENNEPIN
The foregoing instrument was acknowledged before me this 7th day of August, 1986, by ROBERT T. YORK, ASSISTANT SECRETARY, of HRC Company, Inc., a Minnesota corporation, on behalf of the corporation.
Nancy Adams-Moe
Notary Public, Hennepin County, Minnesota
My Commission Expires _____

STATE OF MINNESOTA
COUNTY OF HENNEPIN
The foregoing instrument was acknowledged before me this 12th day of August, 1986, by John M. Nelson, Asst. Vice Pres. and R. J. Stadium, Asst. Vice Pres. of First National Bank of Minneapolis, a national banking association.
Nancy Adams-Moe
Notary Public, Hennepin County, Minnesota

I hereby certify that I have surveyed and platted the property described on this plat as HAMPSHIRE HILL 2ND ADDITION; that this plat is a correct representation of said survey; that all distances are correctly shown in feet and hundredths of a foot; that all monuments have been placed in the ground as shown; that the outside boundary lines are correctly designated on the plat and that there are no wetlands or public highways to be designated on said plat.
Theodore D. Kemna
Theodore D. Kemna
Land Surveyor
Minnesota License No. 17006

STATE OF MINNESOTA
COUNTY OF HENNEPIN
The foregoing instrument was acknowledged before me this 9th day of July, 1986, by Theodore D. Kemna, Land Surveyor.
David B. Roenig
David B. Toenies
Notary Public, Hennepin County, Minnesota
My Commission Expires January 23, 1991

BLOOMINGTON, MINNESOTA

This plat of HAMPSHIRE HILL 2ND ADDITION was approved and accepted by the City Council of the City of Bloomington, Minnesota, at a regular meeting thereof held this _____ day of _____, 19____. If applicable, the written comments and recommendations of the Commissioner of Transportation and the County Highway Engineer have been received by the City or the prescribed 30 day period has elapsed without receipt of such comments and recommendations as provided by Minnesota Statutes, Section 505.03, Subdivision 2.

CITY OF BLOOMINGTON, MINNESOTA

By _____, Mayor
By _____, City Manager

PROPERTY TAX AND PUBLIC RECORDS DEPARTMENT, Hennepin County, Minnesota

I hereby certify that taxes payable in _____ and prior years have been paid for land described on this plat. Dated this _____ day of _____, 19____.

Dale G. Folstad, Hennepin County Auditor
By _____, Deputy

SURVEY DIVISION, Hennepin County, Minnesota

Pursuant to Chapter 810, Minnesota Laws of 1969, this plat has been approved this _____ day of _____, 19____.

_____, County Surveyor
By _____

COUNTY RECORDER, Hennepin County, Minnesota

I hereby certify that the within plat of HAMPSHIRE HILL 2ND ADDITION was filed in this office this _____ day of _____, 19____, at _____ o'clock _____ M.

R. Dan Carlson, County Recorder
By _____, Deputy

60041-005