

GREENWAY PARK

CR DOC. NO. _____

KNOW ALL MEN BY THESE PRESENTS: That Cornerstone Advocacy Service, a Minnesota non-profit corporation, fee owner of the following described property situated in the County of Hennepin, State of Minnesota, to wit:

The West 150 feet of the East 300 feet of Lot 9, Block 2, Bloomington Industrial Park, according to the recorded plat thereof, Hennepin County, Minnesota.

AND

The East 150 feet of Lot 9, Block 2, Bloomington Industrial Park, according to the recorded plat thereof, Hennepin County, Minnesota.

Has caused the same to be surveyed and platted as GREENWAY PARK and does hereby donate and dedicate to the public, for public use forever, the drainage and utility easements as shown on said plat.

In witness whereof said Cornerstone Advocacy Service, a Minnesota non-profit corporation, has caused these presents to be signed by its proper officer this 27th day of February, 2002.

SIGNED: CORNERSTONE ADVOCACY SERVICE

By Susan Yi its Executive Director

STATE OF MINNESOTA
COUNTY OF Hennepin

The foregoing instrument was acknowledged before me this 27th day of February, 2002, by Susan Yi, its Executive Director, of Cornerstone Advocacy Service, a Minnesota non-profit corporation, on behalf of the non-profit corporation.

Anna Conrad
Notary Public, _____ County, Minnesota
My Commission Expires 1/31/05



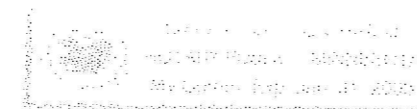
I hereby certify that I have surveyed and platted the property described on this plat as GREENWAY PARK; that this plat is a correct representation of said survey; that all distances are correctly shown on the plat in feet and hundredths of a foot; that all monuments have been correctly placed in the ground as shown on the plat; that the outside boundary lines are correctly designated on the plat; and that there are no wetlands as defined in Minnesota Statutes, Section 505.02, Subd. 1, or public highways to be designated.

Richard J. Williams, Jr.
Richard J. Williams, Jr., Land Surveyor
Minnesota License No. 19840

STATE OF MINNESOTA
COUNTY OF HENNEPIN

The foregoing surveyor's certificate was acknowledged before me this 15th day of February, 2002, by Richard J. Williams, Jr., Land Surveyor.

David B. Toenies
David B. Toenies
Notary Public, Hennepin County, Minnesota
My Commission Expires January 31, 2005



BLOOMINGTON, MINNESOTA

This plat of GREENWAY PARK has been approved and accepted by the City Council of the City of Bloomington, Minnesota, at a regular meeting thereof, held this _____ day of _____, 20____. If applicable, the written comments and recommendations of the Commissioner of Transportation and the County Highway Engineer have been received by the City or the prescribed 30 day period has elapsed without receipt of such comments and recommendations, as provided by Minnesota Statutes, Section 505.03, Subdivision 2.

CITY COUNCIL OF THE CITY OF BLOOMINGTON

By _____, Mayor By City Manager

TAXPAYER SERVICES DEPARTMENT, Hennepin County, Minnesota

I hereby certify that taxes payable in 20____ and prior years have been paid for land described on this plat. Dated this _____ day of _____, 20____.

Patrick H. O'Connor, Hennepin County Auditor

By _____, Deputy

SURVEY DIVISION, Hennepin County, Minnesota

Pursuant to MINN. STAT Sec. 383B.565 (1969), this plat has been approved this _____ day of _____, 20____.

William P. Brown, Hennepin County Surveyor

By _____

COUNTY RECORDER, Hennepin County, Minnesota

I hereby certify that the within plat of GREENWAY PARK was filed for record in this office this _____ day of _____, 20____, at _____ o'clock _____M.

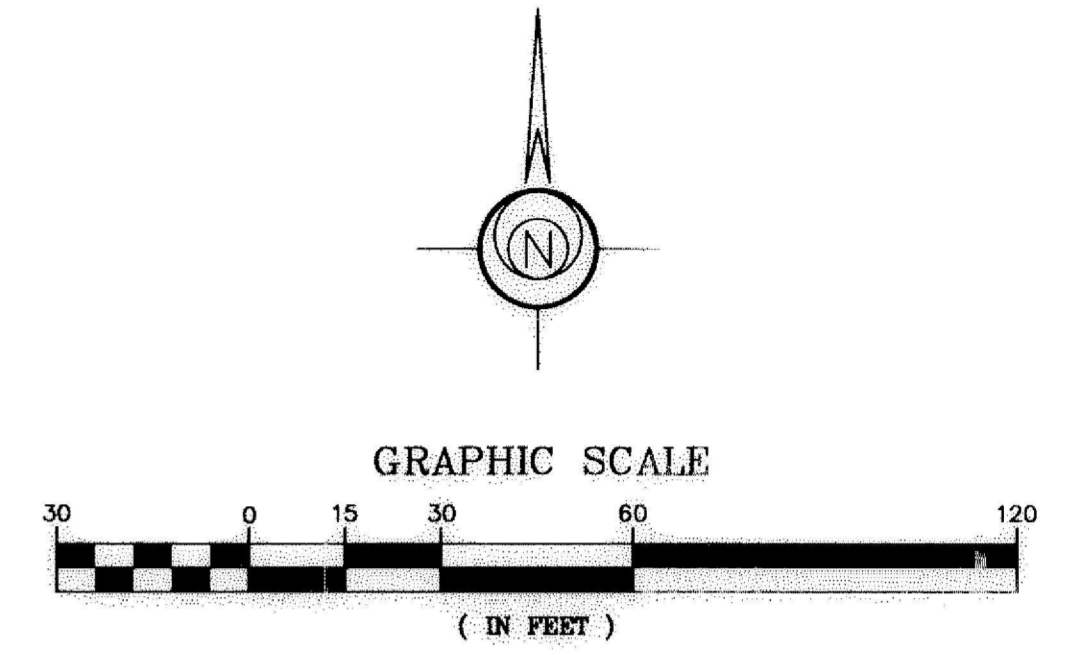
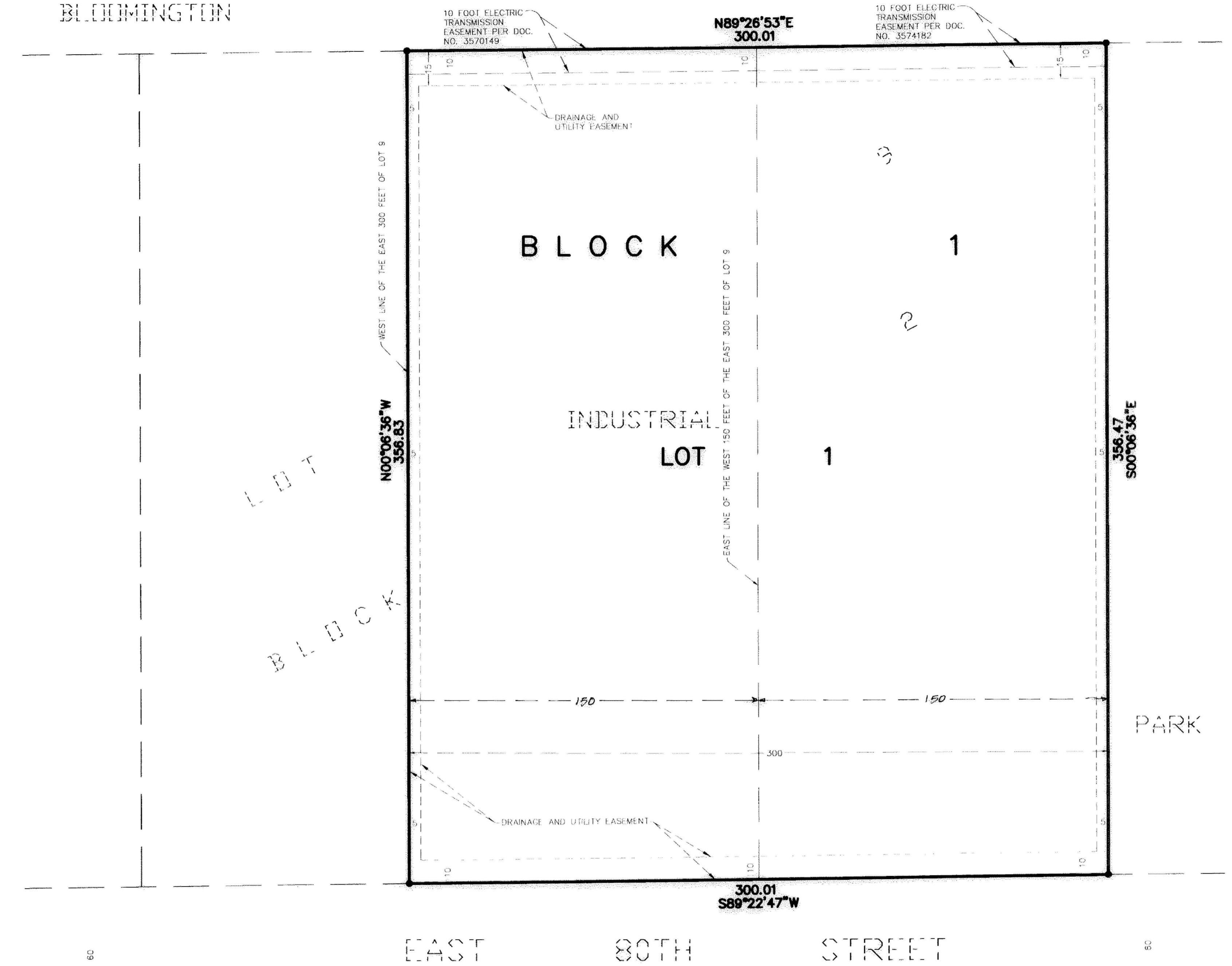
Michael H. Cunniff, County Recorder

By _____, Deputy

GREENWAY PARK

CR DOC. NO. _____

BLOOMINGTON



Orientation of the bearing system used for this plat is based on the South line of Lot 9, Block 2, Bloomington Industrial Park, which is assumed to have a bearing of $S89^{\circ}22'47''W$.

• - Denotes found iron monument.

SMITH PARK
2ND
ADDITION

DIETRICH'S

SOUTHGATE

SCHOELL & MADSON, INC.
ENGINEERS * SURVEYORS * PLANNERS
SOIL TESTING * ENVIRONMENTAL SERVICES