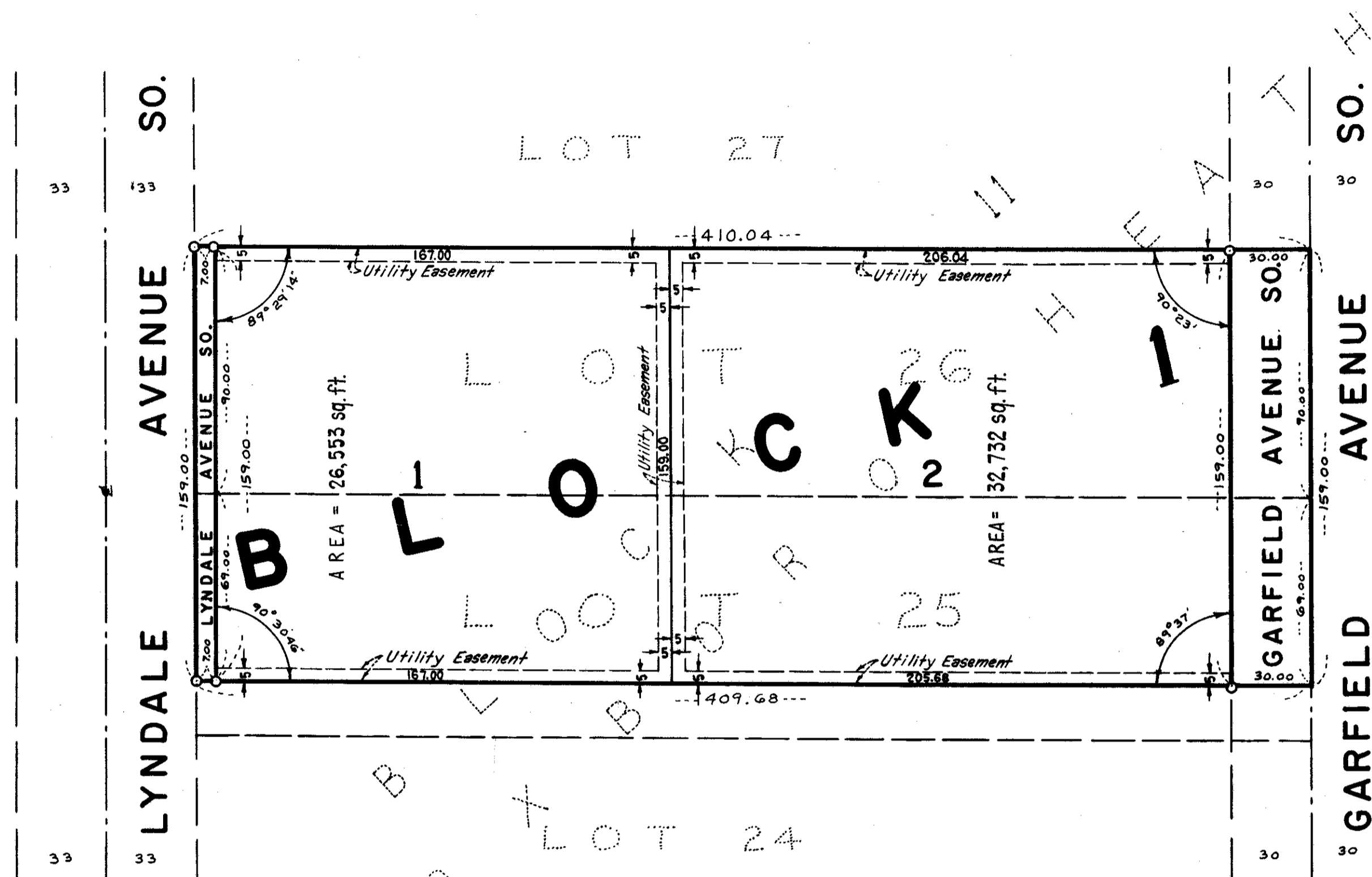


# GENERAL MILLS BLOOMINGTON ADDITION

EGAN, FIELD & NOWAK  
SURVEYORS  
MAY, 1970

• DENOTES IRON MONUMENT FOUND  
○ DENOTES IRON MONUMENT ESTABLISHED  
SCALE: 1 INCH EQUALS 40 FEET



Know all men by these presents that General Mills, Inc., a Minnesota corporation, owner and proprietor of the following described property situated in the State of Minnesota and County of Hennepin to wit: Lot 26 and the North 69 feet of Lot 25, Block 11, Oxboro Heath, according to the map or plat thereof on file and of record in the office of the Register of Deeds in and for Hennepin County, Minnesota, has caused the same to be surveyed and platted as GENERAL MILLS BLOOMINGTON ADDITION and does hereby donate and dedicate to the public for public use forever the avenues and easements for utility purposes as shown on this plat.

In witness whereof said General Mills, Inc. has caused these presents to be signed by its proper officers and its corporate seal to be hereunto affixed this 20th day of May A.D. 1970.

In presence of:  
John D. Sasins As to Stanley V. Tabak by Stanley V. Tabak its vice president  
Ruth M. Olson and Dorothy A. Bilodeau by Dorothy A. Bilodeau its Assistant Secretary  
 GENERAL MILLS, INC.

STATE OF MINNESOTA) S.S.  
 COUNTY OF HENNEPIN) On this 20th day of May A.D. 1970, before me a Notary Public, personally appeared Stanley V. Tabak and Dorothy A. Bilodeau, to me personally known who by me each duly sworn did say that they are respectively Vice President and Assistant Secretary of General Mills, Inc., the corporation named in the foregoing instrument, that the corporate seal affixed to said instrument is the corporate seal of said corporation and that said instrument was signed and sealed in behalf of said corporation by authority of its Board of Directors and said Stanley V. Tabak and Dorothy A. Bilodeau acknowledged said instrument to be the free act and deed of said corporation.

David C. Pielle  
 Notary Public, Hennepin County, Minnesota  
 My commission expires March 5, 1971

I hereby certify that I have surveyed and platted the property described on this plat as GENERAL MILLS BLOOMINGTON ADDITION; that this plat is a correct representation of said survey; that all distances are correctly shown on the plat in feet and decimals of a foot; that all monuments have been correctly placed in the ground as shown; that the outside boundary lines are correctly designated on the plat and that there are no wet lands to be designated on said plat.

Thomas A. Nielsen  
 Surveyor - Minnesota Registration No. 9053

STATE OF MINNESOTA) S.S.  
 COUNTY OF HENNEPIN) The surveyor's certificate was subscribed and sworn to before me, a Notary Public, this 20th day of MAY A.D. 1970.

Chris Kuntz  
 CHRIS KUNTZ  
 Notary Public, Hennepin County, Minnesota  
 My commission expires March 4, 1975.

This plat of GENERAL MILLS BLOOMINGTON ADDITION was approved and accepted by the City Council of Bloomington, Minnesota at a regular meeting thereof held this \_\_\_\_\_ day of \_\_\_\_\_ A.D. 1970.

CITY COUNCIL OF BLOOMINGTON, MINNESOTA  
 by \_\_\_\_\_ Mayor  
 by \_\_\_\_\_ Manager

The boundaries of this plat and the boundaries of the block therein have been mathematically checked and approved. No determination has been made to ascertain that the legal description agrees with said plat. Dated this \_\_\_\_\_ day of \_\_\_\_\_ A.D. 1970.

by \_\_\_\_\_  
 Elmer J. Peterson  
 Hennepin County Surveyor