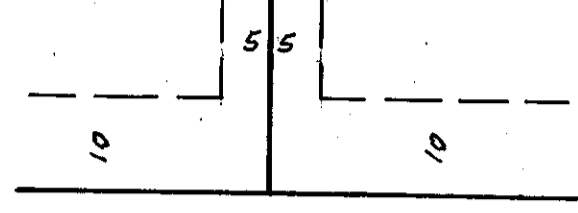


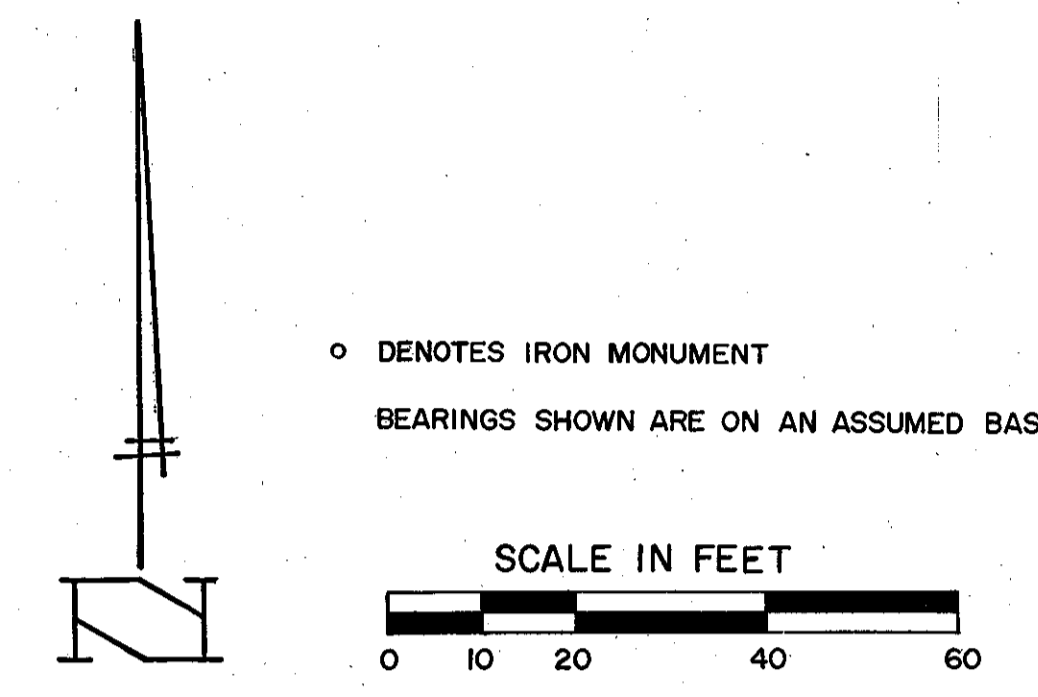
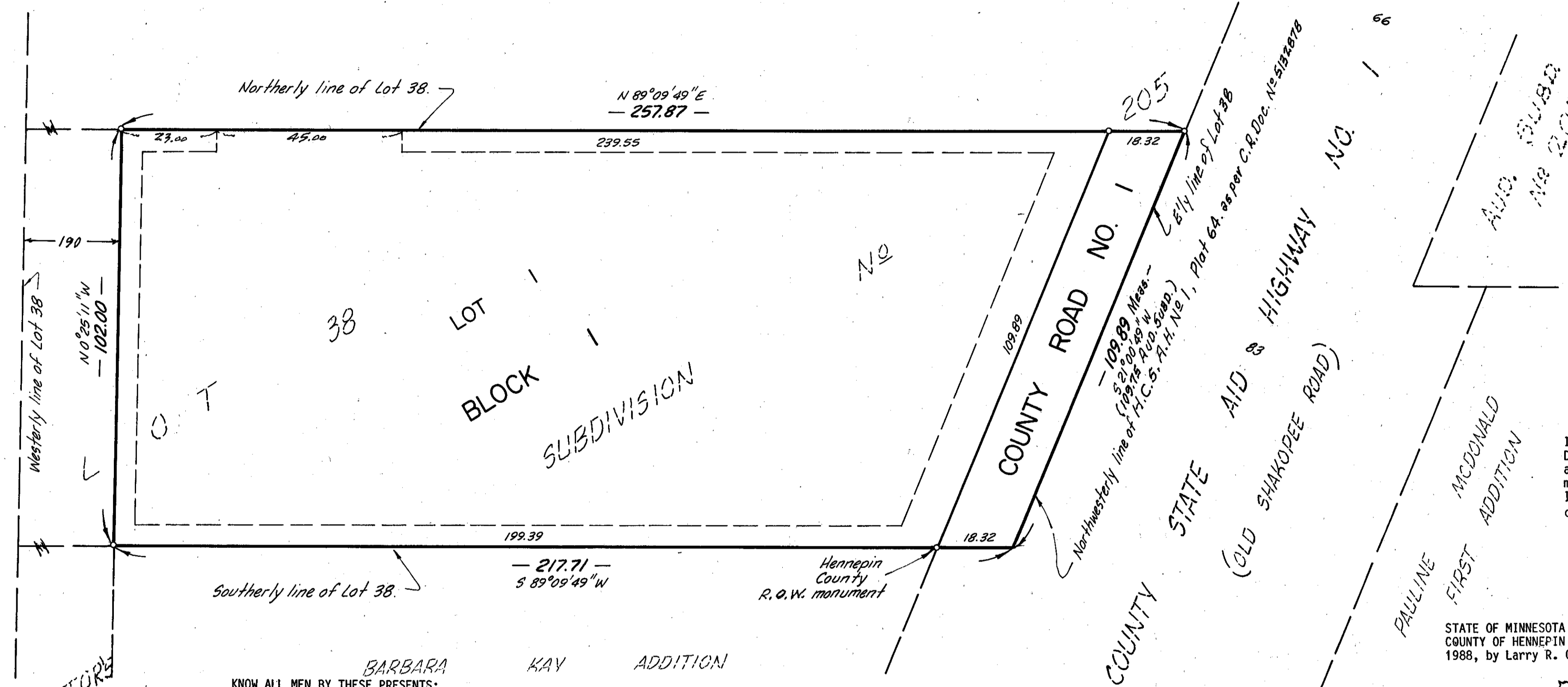
DOYLE ADDITION

C.R. DOC. NO. _____

UTILITY AND DRAINAGE EASEMENTS SHOWN THUS:



Being 5 feet in width and adjoining Lot lines and 10 feet in width adjoining street lines as shown on the plat.



o DENOTES IRON MONUMENT
BEARINGS SHOWN ARE ON AN ASSUMED BASIS.

I hereby certify that I have surveyed and platted the property described on this plat as DOYLE ADDITION; that this plat is a true and correct representation of said survey; that all distances are correctly shown on the plat in feet and hundredths of a foot; that all monuments have been correctly placed in the ground as shown; that the outside boundary lines are correctly designated on this plat and that there are no wet lands to be designated on said plat.

Larry R. Couture
Larry R. Couture, Land Surveyor
Minnesota License No. 9018

STATE OF MINNESOTA
COUNTY OF HENNEPIN The foregoing instrument was acknowledged before me this 29th day of July, 1988, by Larry R. Couture, Land Surveyor.

JOYCE W. M. COUTURE
NOTARY PUBLIC - MINNESOTA
HENNEPIN COUNTY
My commission expires Feb. 2, 1990

Joyce W. M. Couture
Notary Public, Hennepin County, Minnesota
My Commission expires Feb 2, 1990

KNOW ALL MEN BY THESE PRESENTS:
That Michael O. Doyle, single, owner and proprietor and First Bank Bloomington, a Minnesota State Banking Corporation, mortgagee of the following described property situated in the County of Hennepin and State of Minnesota to wit:

That part of Lot 38, lying East of the West 190 feet thereof, Auditor's Subdivision Number 205, Hennepin County, Minnesota.

Have caused the same to be surveyed and platted as DOYLE ADDITION and do hereby donate and dedicate to the public for public use forever the Road and Easements for utility and drainage purposes as shown on the plat. In witness whereof said Michael O. Doyle, single, has hereunto set his hand and seal this 24th day of August, 1988. In witness whereof said First Bank Bloomington, a Minnesota State Banking Corporation, has caused these presents to be signed by its proper officers this 1st day of AUGUST, 1988.

SIGNED:
by Michael O. Doyle Michael O. Doyle
by George F. Hayden its Vice President
by Karen L. Larson its Asst. Cashier

STATE OF MINNESOTA
COUNTY OF HENNEPIN The foregoing instrument was acknowledged before me this 2nd day of August, 1988, by Michael O. Doyle, single.

JOYCE W. M. COUTURE
NOTARY PUBLIC - MINNESOTA
HENNEPIN COUNTY
My commission expires Feb. 2, 1990

Joyce W. M. Couture
Notary Public, Hennepin County, Minnesota
My commission expires Feb 2, 1990

STATE OF MINNESOTA
COUNTY OF HENNEPIN The foregoing instrument was acknowledged before me this 1st day of August, 1988, by GEORGE F. HAYDEN, Vice Pres; KAREN L. LARSON, Asst. Cashier of First Bank Bloomington, a Minnesota State Banking Corporation, on behalf of said corporation.

W. Dan Carlson
Notary Public, Hennepin County, Minnesota
My commission expires 7/1/88

CITY OF BLOOMINGTON, Minnesota
This plat of DOYLE ADDITION was approved and accepted by the City Council of the City of Bloomington, Minnesota, at a regular meeting thereof held this _____ day of _____, 1988. If applicable the written comments and recommendations of the Commissioner of Transportation and the County Highway Engineer have been received by the City or the prescribed 30 day period has elapsed without receipt of such comments or recommendations, as provided by Minnesota Statutes, Section 505.03, Subdivision 2.

CITY COUNCIL OF THE CITY OF BLOOMINGTON, MINNESOTA
by _____ Mayor
by _____ Manager

PROPERTY TAX AND PUBLIC RECORDS DEPARTMENT, Hennepin County, Minnesota
I hereby certify that taxes payable in _____ and prior years have been paid for lands described on this plat. Dated this _____ day of _____, 1988.

Dale G. Folstad, Hennepin County Auditor by _____ Deputy

SURVEY DIVISION, Hennepin County, Minnesota
Pursuant to Chapter 810, Minnesota Laws of 1969, this plat has been approved this _____ day of _____, 1988.

Bernard H. Larson, Hennepin County Surveyor by _____

COUNTY RECORDER, Hennepin County, Minnesota
I hereby certify that the within plat of DOYLE ADDITION was filed in this office this _____ day of _____, 1988, at _____ o'clock _____ M.

R. Dan Carlson, County Recorder by _____ Deputy

