

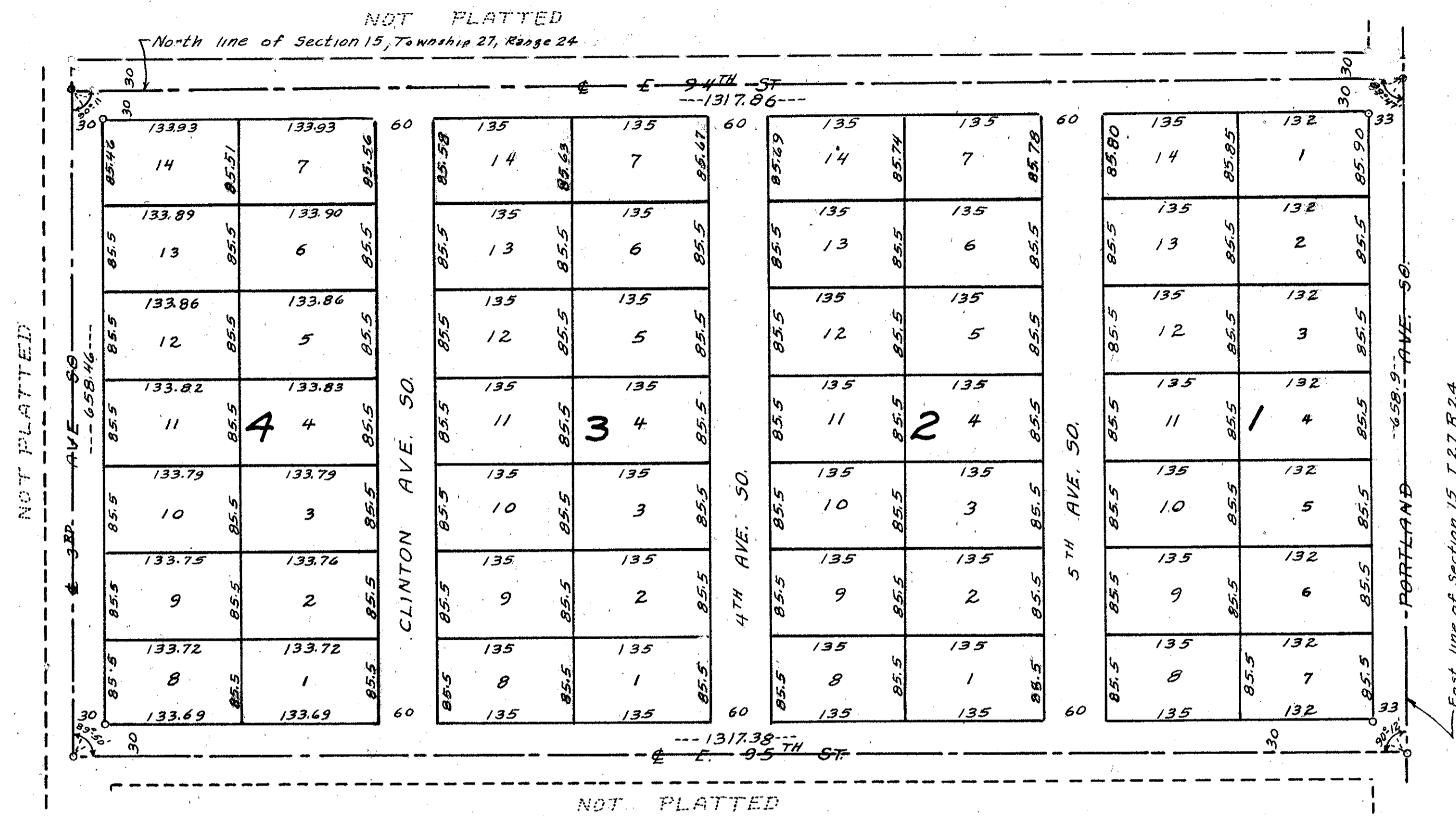
DON THORP'S SECOND ADDITION

VILLAGE OF BLOOMINGTON, HENNEPIN COUNTY, MINN.

SCALE 1"=100'

JANUARY, 1954

CLYDE H. PARKER
SURVEYOR



Know all men by these presents that D.E. Thorp Builders Incorporated, a Minnesota corporation, owners and proprietors of the following described property situate in the State of Minnesota and in the County of Hennepin, to wit: The North one half (N¹/₂) of the Northeast one quarter (NE ¹/₄) of the Northeast one quarter (NE ¹/₄) of Section 15 Township 27 North Range 24 West of the 5th P.M.

have caused the same to be surveyed and platted as "DON THORP'S SECOND ADDITION" and do hereby donate and dedicate to the public for public use forever, the streets and avenues as shown on the annexed plat. In witness whereof we have hereunto set our hands and seal and have caused these presents to be signed by the proper officers and the corporate seal to be hereunto affixed this _____ day of _____ AD 1954

President

Secretary
D.E. THORP BUILDERS, INCORPORATED

State of Minnesota) s.s. On this day _____ day of _____ AD 1954 before me, a notary public, within and for said County of Hennepin, County personally appeared Donald E. Thorp and Eleanor Thorp to me personally known who being by me each duly sworn did say that they are respectively President and Secretary of D.E. Thorp Incorporated, the corporation named in the foregoing instrument; that the seal affixed is the corporate seal of said corporation and that said instrument was signed and sealed in behalf of said corporation by authority of its Board of Directors and that Donald E. Thorp and Eleanor Thorp acknowledged said instrument to be the free act and deed of said corporation.

Notary Public Hennepin County, Minn.

State of Minnesota) s.s. I do hereby certify that I have surveyed and platted the property described on this plat as "DON THORP'S SECOND ADDITION"; that this plat is a correct representation of said survey; that all distances are correctly shown in feet and decimals of a foot; that the monuments for guidance of future surveys have been correctly placed in the ground as shown on this plat; that the outside boundary lines are correctly designated on the plat; that the topography of the land has been correctly shown, and that there are no wet lands or public highways to be shown on the plat other than as shown thereon.

Surveyor

Above certificate subscribed and sworn to before me this _____ day of _____ AD 1953

Notary Public Hennepin County Minn.
My commission expires _____

Approved this _____ day of _____ AD 1954 _____ County Surveyor.

This plat was approved and accepted by the Village Council of Bloomington Minnesota at a regular meeting thereof held this _____ day of _____ AD 1953

Mayor

Village Clerk