

DILLON CENTRE

KNOW ALL MEN BY THESE PRESENTS: That DILLON MOTEL INVESTORS, a Wisconsin General Partnership, owners and proprietors, and METROPOLITAN BANK, a Minnesota Banking Corporation, and James E. Madden and Joan C. Madden, mortgagees, of the following described property situated in the County of Hennepin, State of Minnesota, to wit:

Lots 1 and 2, Block 1, STADIUM BOWL ADDITION, according to the recorded plat thereof, Hennepin County, Minnesota.

And that WM. T. COLLINS SHOWS, INC., a Minnesota Corporation, owners and proprietors of the following described property situated in the County of Hennepin, State of Minnesota, to wit:

The South 52.5 feet of the North 757.5 feet of the West 164.25 feet of the East 986.5 feet of the Northeast Quarter (NE 1/4) of the Northwest Quarter (NW 1/4) of Section 2, Township 27, Range 24, West of the 4th Principal Meridian, Hennepin County, Minnesota.

And

The South 365 feet of the North 705 feet of the West 164.25 feet of the East 986.5 feet of the Northeast Quarter (NE 1/4) of the Northwest Quarter (NW 1/4) of Section 2, Township 27 North, Range 24 West of the 4th Principal Meridian, Hennepin County, Minnesota.

Have caused the same to be surveyed and platted as DILLON CENTRE and do hereby donate and dedicate to the public, for public use forever, the street and drainage and utility easements as shown on said plat.

In witness whereof THE DILLON INN COMPANY, INC., a Wisconsin Corporation, a general partner of said DILLON MOTEL INVESTORS, a Wisconsin General Partnership, has caused these presents to be signed by Roger E. Dehring, President, and Michael S. Margulies, its Secretary, on behalf of said partnership, this 21 day of MARCH, 1986.

DILLON MOTEL INVESTORS, a partnership
THE DILLON INN COMPANY, INC., a partner

SIGNED: Roger E. Dehring, President

Michael S. Margulies
Michael S. Margulies Secretary

And in witness whereof said METROPOLITAN BANK, a Minnesota Banking Corporation, has caused these presents to be signed by its proper officer and its corporate seal to be hereunto affixed this 17 day of April, 1986.

METROPOLITAN BANK

SIGNED: Steven A. Schmitt its U.P.

Steven M. Carrier its V.P.

And in witness whereof said James E. Madden and Joan C. Madden, husband and wife, have hereunto set their hands this 17 day of April, 1986.

SIGNED: James E. Madden

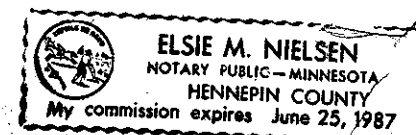
Joan C. Madden

And in witness whereof said WM. T. COLLINS SHOWS, INC., a Minnesota Corporation, has caused these presents to be signed by its proper officer this 22 day of March, 1986.

SIGNED: Mildred A. Collins its Secretary and Treasurer
President WM. T. COLLINS SHOWS, INC.

STATE OF MINNESOTA
COUNTY OF HENNEPIN

The foregoing instrument was acknowledged before me this 21 day of MARCH, 1986 by Roger E. Dehring, President, and Michael S. Margulies, Secretary of said THE DILLON INN COMPANY, INC., a Wisconsin Corporation, a general partner of DILLON MOTEL INVESTORS, a Wisconsin General Partnership on behalf of said partnership.

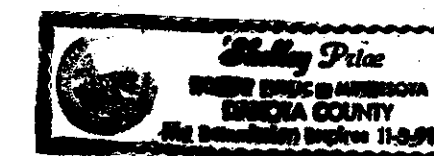


Elsie M. Nielsen
Notary Public, Hennepin County, Minnesota
My Commission Expires _____

STATE OF MINNESOTA
COUNTY OF DAKOTA

The foregoing instrument was acknowledged before me this 17 day of April, 1986 by Steven Schmitt, its Vice President and Steven Carrier, its Vice President of said METROPOLITAN BANK, a Minnesota Banking Corporation, on behalf of said corporation.

Shelley Price
Notary Public, Dakota County, Minnesota
My Commission Expires NOV 5, 1991



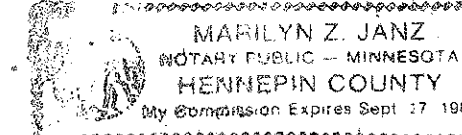
STATE OF MINNESOTA
COUNTY OF DAKOTA

The foregoing instrument was acknowledged before me this 17 day of April, 1986 by James E. Madden and Joan C. Madden, husband and wife.

Jean M. Doyle
Notary Public, Dakota County, Minnesota
My Commission Expires Feb 20, 1991

STATE OF MINNESOTA
COUNTY OF HENNEPIN

The foregoing instrument was acknowledged before me this 22 day of March, 1986 by Mildred A. Collins, its Secretary and Treasurer of said WM. T. COLLINS SHOWS, INC., a Minnesota Corporation, on behalf of said corporation.



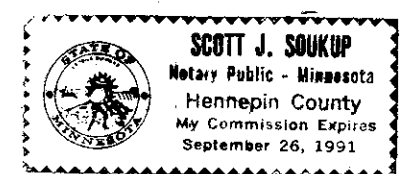
Marilyn Z. Janz
Notary Public, Hennepin County, Minnesota
My Commission Expires _____

I hereby certify that I have surveyed and platted the property described on this plat as DILLON CENTRE; that this plat is a correct representation of said survey; that all distances are correctly shown in feet and hundredths of a foot; that all monuments have been correctly placed in the ground as shown; that the outside boundary lines are correctly designated; and that there are no wetlands to be designated on said plat.

Edward H. Sunde
Edward H. Sunde, Land Surveyor
Minnesota License No. 8612

COUNTY OF MINNESOTA
COUNTY OF HENNEPIN

The foregoing surveyor's certificate was acknowledged before me this 22 day of MARCH, 1986 by Edward H. Sunde, Land Surveyor.



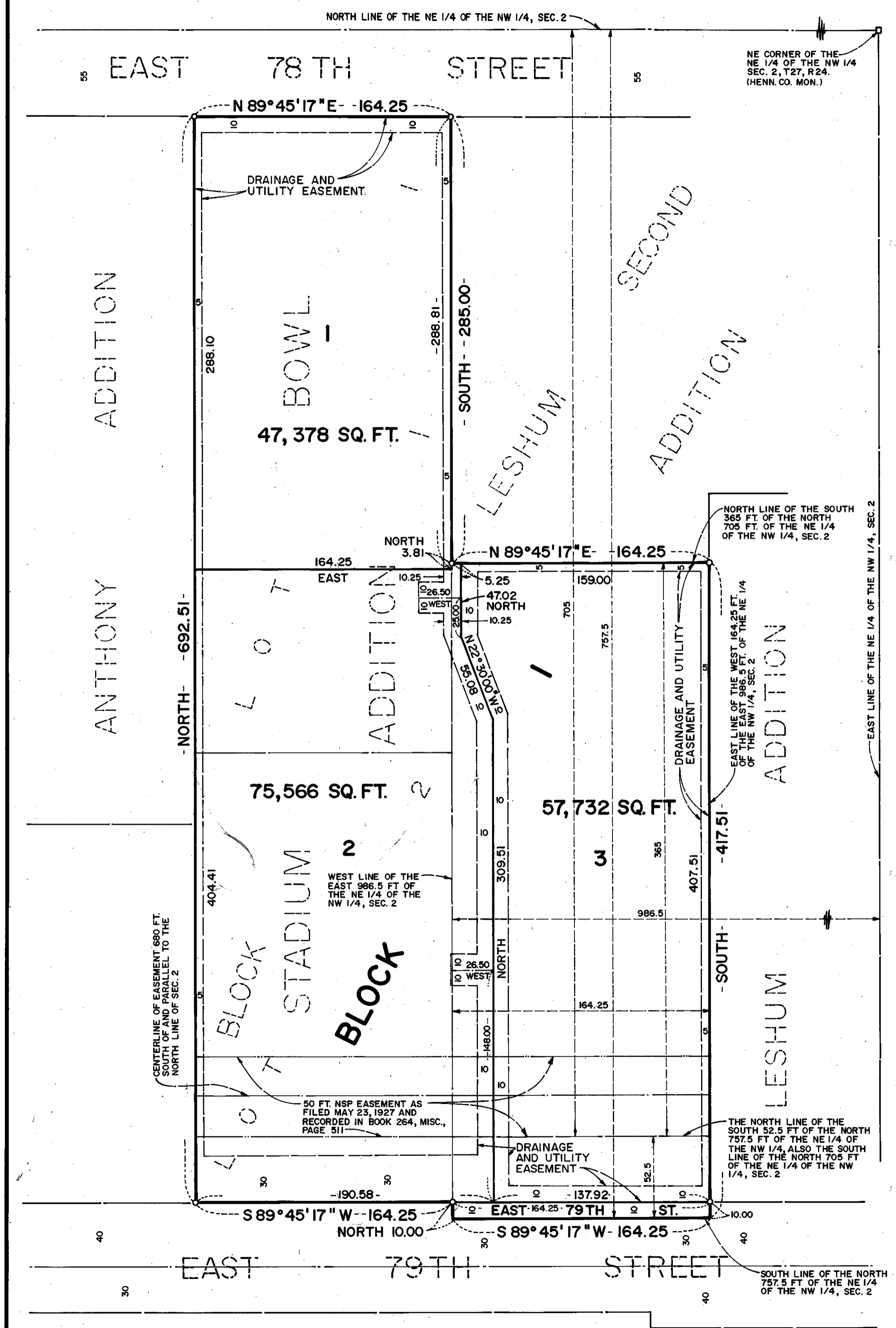
Scott J. Soukup
Notary Public, Hennepin County, Minnesota
My Commission Expires SEPTEMBER 26, 1991

Sunde Land Surveying Inc.

INTERSTATE HIGHWAY NO. 494

DILLON CENTRE

C.R. DOC. NO. _____



BLOOMINGTON, MINNESOTA

This plat of DILLON CENTRE was approved and accepted by the City Council of the City of Bloomington, Minnesota at a regular meeting thereof, held this ___ day of ___, 198___. If applicable, the written comments and recommendations of the Commissioner of Transportation and the County Highway Engineer have been received by the City or the prescribed 30 day period has elapsed without receipt of such comments and recommendations, as provided by Minn. Statutes, Section 505.03 Subd. 2.

CITY COUNCIL OF BLOOMINGTON, MINNESOTA

BY: _____ its Mayor

BY: _____ its Manager

PROPERTY TAX AND PUBLIC RECORDS DEPARTMENT, Hennepin County, Minnesota

I hereby certify that taxes payable in 19__ and prior years have been paid for land described on this plat. Dated this ___ day of ___, 198__.

Dale G. Folstad, Hennepin County Auditor

BY: _____ Deputy

SURVEY DIVISION, Hennepin County, Minnesota

Pursuant to Chapter 810, Minnesota Laws of 1969, this plat has been approved this ___ day of ___, 198__.

Robert L. Bakka, Hennepin County Surveyor

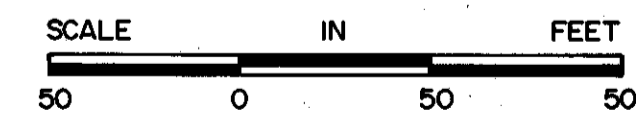
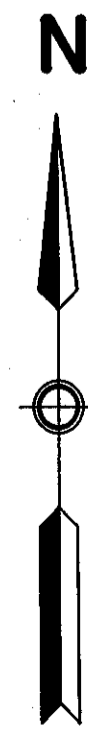
BY: _____

COUNTY RECORDER, Hennepin County, Minnesota

I hereby certify that the within plat of DILLON CENTRE was filed for record in this office this ___ day of ___, 198__ at ___ o'clock __.M.

R. Dan Carlson, County Recorder

BY: _____ Deputy



o DENOTES IRON MONUMENT
BEARINGS SHOWN ARE ASSUMED

BLOOMINGTON INDUSTRIAL PARK

Sunde Land Surveying Inc.