

CURRY FARMS 5TH ADDITION

R.T. DOC. NO. _____

COMMUNITY OF
THE CROSS LUTHERAN
CHURCH 1ST ADDITION

LANDAU OF BLOOMINGTON THIRD ADDITION

KNOW ALL MEN BY THESE PRESENTS:
That SHARE, a Minnesota nonprofit corporation, owner and proprietor of the following described
property situated in the County of Hennepin and State of Minnesota to wit:

Outlot A, Curry Farms 4th Addition, according to the plat thereof on file and of
record in the office of the Registrar of Titles, Hennepin County, Minnesota.

Has caused the same to be surveyed and platted as CURRY FARMS 5TH ADDITION and does hereby donate and
dedicate to the public for public use forever the Easements for utility and drainage purposes as shown
on the plat. In witness whereof said SHARE has caused these presents to be signed by its proper
officers this 17 day of June, 1987.

SHARE
by Brian D. Kovalchuk President by Naomi K. Evans Secretary
Brian D. Kovalchuk Naomi K. Evans

STATE OF MINNESOTA
COUNTY OF HENNEPIN The foregoing instrument was acknowledged before me this 17 day of
June, 1987, by Brian D. Kovalchuk, President and Naomi K. Evans, Secretary of
SHARE, a Minnesota nonprofit corporation, on behalf of said Corporation.

Lora Paul
Notary Public, Hennepin County, Minnesota
My commission expires _____

I hereby certify that I have surveyed and platted the property described on this plat as CURRY FARMS 5TH
ADDITION; that this plat is a true and correct representation of said survey; that all distances are
correctly shown on the plat in feet and hundredths of a foot; that all monuments have been correctly
placed in the ground as shown; that the outside boundary lines are correctly designated on this plat and
that there are no wet lands or public highways to be designated on said plat.

Larry R. Couture
Larry R. Couture, Land Surveyor
Minnesota License No. 9018

STATE OF MINNESOTA
COUNTY OF HENNEPIN The foregoing instrument was acknowledged before me this 10th day of June
1987, by Larry R. Couture, Land Surveyor.

ROYCE W. M. COUTURE
NOTARY PUBLIC - MINNESOTA
HENNEPIN COUNTY
My commission expires Feb. 2, 1990

Larry R. Couture
Notary Public, Hennepin County, Minnesota
My commission expires Feb. 2, 1990

CITY OF BLOOMINGTON, Minnesota
This plat of CURRY FARMS 5TH ADDITION was approved and accepted by the City Council of the City of Bloomington,
Minnesota, at a regular meeting thereof held this _____ day of _____, 1987. If applicable
the written comments and recommendations of the Commissioner of Transportation and the County Highway Engineer
have been received by the City or the prescribed 30 day period has elapsed without receipt of such comments or
recommendations, as provided by Minnesota Statutes, Section 505.03, Subdivision 2.

CITY COUNCIL OF THE CITY OF BLOOMINGTON, MINNESOTA

by _____ Mayor by _____ Manager

PROPERTY TAX AND PUBLIC RECORDS DEPARTMENT, Hennepin County, Minnesota
I hereby certify that taxes payable in _____ and prior years have been paid for lands described on this
plat. Dated this _____ day of _____, 1987.

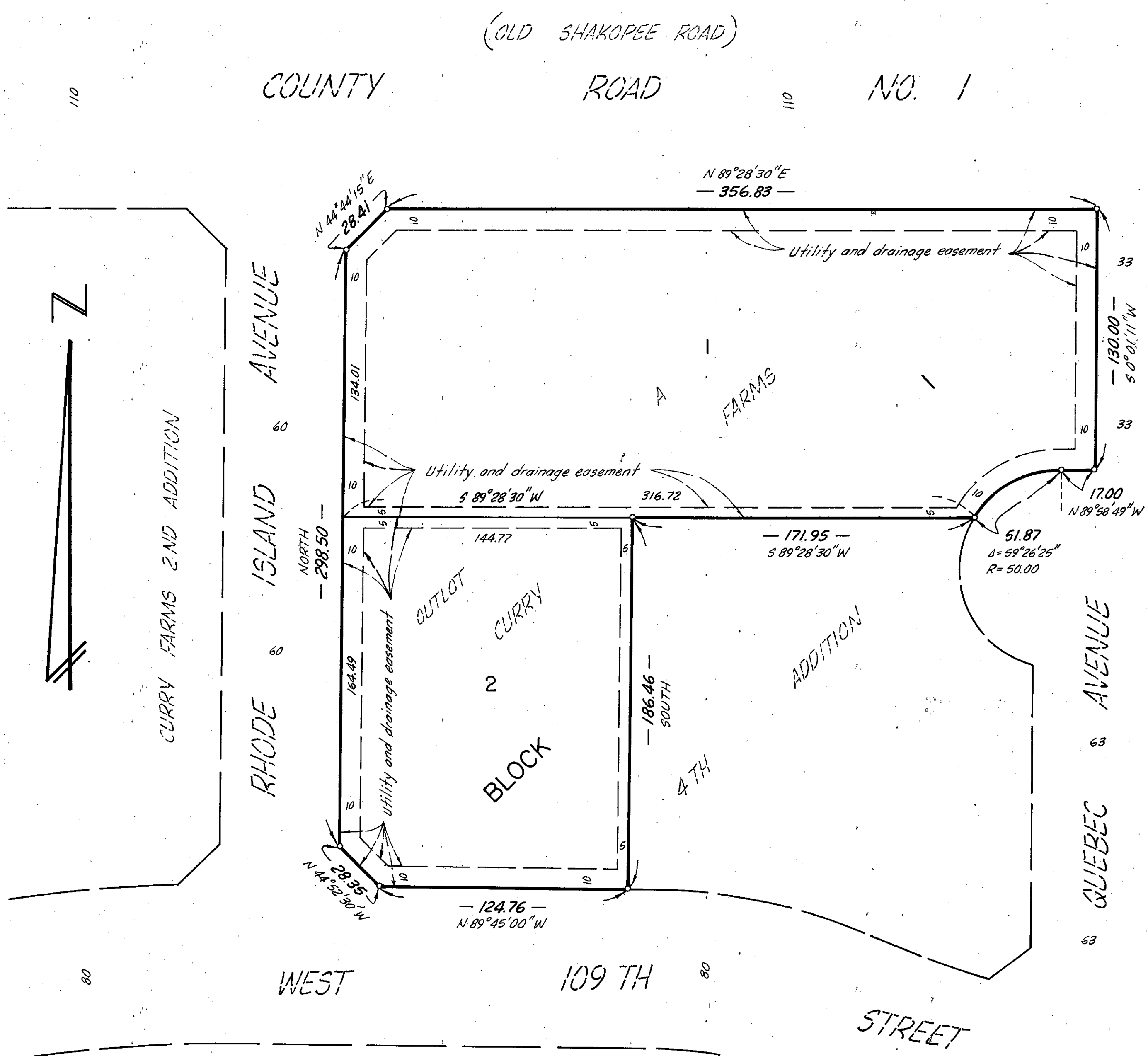
Dale G. Folstad, Hennepin County Auditor by _____ Deputy

SURVEY DIVISION, Hennepin County, Minnesota
Pursuant to Chapter 810, Minnesota Laws of 1969, this plat has been approved this _____ day of
_____, 1987.

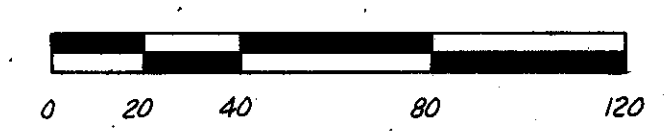
Bernard H. Larson, Hennepin County Surveyor by _____

REGISTRAR OF TITLES, Hennepin County, Minnesota
I hereby certify that the within plat of CURRY FARMS 5TH ADDITION was filed in this office this _____
day of _____, 1987, at _____ o'clock _____ M.

R. Dan Carlson, Registrar of Titles by _____ Deputy



CURRY FARMS
(CONDO. NO. 406 DEVONWOOD
CONDOMINIUM)



SCALE IN FEET

CURRY FARMS 3RD ADDITION

o Denotes iron monument
Bearings shown are on an assumed basis.