

CONTINENTAL OIL 1ST ADDITION

KNOW ALL MEN BY THESE PRESENTS: That Continental Oil Company, a Delaware corporation, owner and proprietor of the following described land, situate in the County of Hennepin, State of Minnesota, to wit:

East 162 feet of the North 200 feet of the West half of the Northeast Quarter of the Northeast Quarter of the Southeast Quarter of Section 16, Township 27, Range 24, Hennepin County, Minnesota, according to the United States Government Survey thereof.

Has caused the same to be surveyed and platted as CONTINENTAL OIL 1ST ADDITION and does hereby donate and dedicate to the public for public use forever the avenue, street and easements for drainage and utility purposes, as shown on the plat.

In witness whereof Continental Oil Company, a Delaware corporation, has caused these presents to be signed by its proper officers, and its corporate seal to be hereunto affixed this 10th day of May A.D., 1974.

SIGNED: CONTINENTAL OIL COMPANY

Tom W. Sigler Vice President
Wilmer J. Macomb its Assistant Secretary

STATE OF Texas
COUNTY OF Harris

The foregoing instrument was acknowledged before me this 10th day of May A.D., 1974 by Tom W. Sigler Vice President and Wilmer J. Macomb Asst. Secy of Continental Oil Company, a Delaware corporation, on behalf of said corporation.

RACHEL M. BAILEY
Notary Public, in and for Harris County, Texas
My Commission Expires June 1, 1975

Rachel M. Bailey
Notary Public, Harris County, Texas
My Commission Expires June 1, 1975

I hereby certify that I have surveyed and platted the property described on this plat as CONTINENTAL OIL 1ST ADDITION; and that this plat is a correct representation of said survey; that all distances are correctly shown in feet and hundredths of a foot; that all monuments have been correctly placed in the ground as shown; that the outside boundary lines are correctly designated; and there are no wet lands to be designated on said plat.

Arvid T. Bodin
Arvid T. Bodin
Land Surveyor
Minn. Reg. No. 9396

STATE OF MINNESOTA
COUNTY OF Hennepin

The foregoing instrument was acknowledged before me this 16th day of April A.D., 1974, by Arvid T. Bodin, Land Surveyor.

JOYCE A. PETERSON
Notary Public, Hennepin County, Minn.
My Commission Expires April 11, 1978.

Joyce A. Peterson
Notary Public, Hennepin County, Minnesota
My Commission Expires April 11, 1978

This plat of CONTINENTAL OIL 1ST ADDITION, was approved by the City Council of Bloomington, Minnesota at a regular meeting thereof held this _____ day of _____ A.D., 1974.

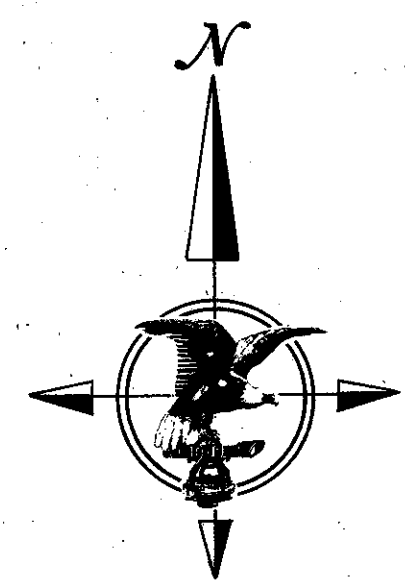
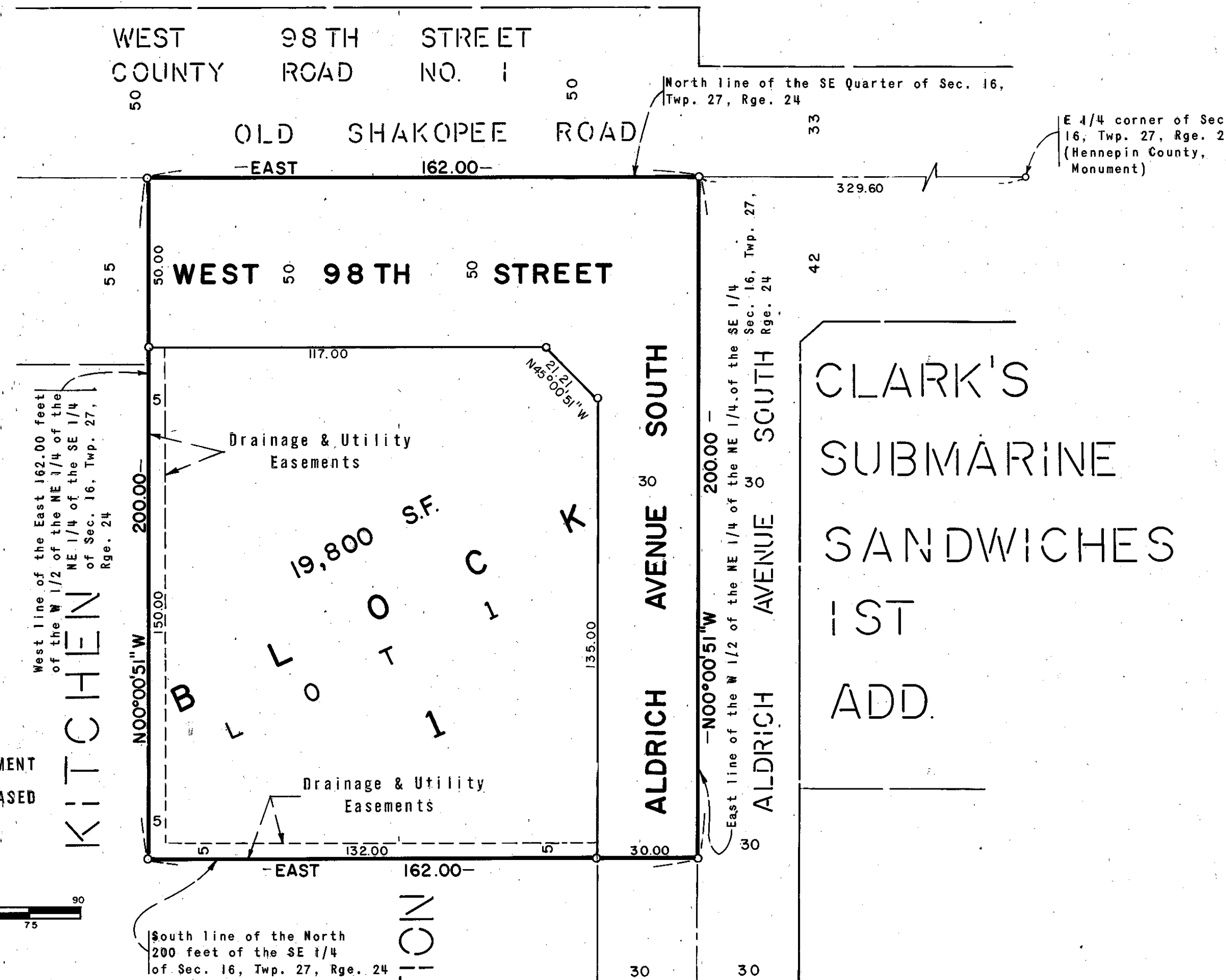
CITY COUNCIL OF BLOOMINGTON, MINNESOTA

By: _____ Mayor

By: _____ Manager

Pursuant to Chapter 810, Minnesota Laws of 1969, this plat has been approved this _____ day of _____ A.D., 1974.

By: Alver R. Freeman
Hennepin County Surveyor



○ DENOTES IRON MONUMENT
BEARINGS SHOWN ARE BASED ON AN ASSUMED DATUM

SCALE
0 30 45 60 75 90
IN FEET

COUNTRY

1ST

ADDITION

