

COLLIS 2ND ADDITION

KNOW ALL MEN BY THESE PRESENTS: That George C. Collis and Laurel Collis, husband and wife, owners and proprietors of the following described property situate in the County of Hennepin, State of Minnesota to wit:

Outlot A, Collis 1st Addition, according to the plat thereof on file or of record in the office of the Register of Deeds, Hennepin County, Minnesota.

Have caused the same to be surveyed and platted as COLLIS 2ND ADDITION, and do hereby donate and dedicate to the public for public use forever the street, circle and drainage and utility easements as shown on this plat.

In witness whereof George C. Collis and Laurel Collis have hereunto set their hands this 23 day of AUGUST A.D., 1973.

George C. Collis SIGNED *Laurel Collis*
George C. Collis Laurel Collis

State of Minnesota County of HENNEPIN On this 23 day of AUGUST A.D., 1973, before me, a Notary Public, personally appeared George C. Collis and Laurel Collis, husband and wife, to me personally known to be the persons described in and who executed the foregoing instrument and acknowledged that they executed the foregoing instrument as their own free act and deed.

Mary Lou Mason
Notary Public HENNEPIN County, Minnesota
My Commission Expires APRIL 24, 1977

I hereby certify that I have surveyed the property described on this plat as COLLIS 2ND ADDITION; that this plat is a correct representation of said survey; that all distances are correctly shown in feet and hundredths of a foot; that all monuments have been correctly placed in the ground as shown; that the outside boundary lines are correctly designated; and that there are no wetlands to be designated.

Gordon L. Christenson
Gordon L. Christenson
Land Surveyor, Minnesota Registration No. 9293

State of Minnesota County of SCOTT The Surveyor's Certificate was subscribed and sworn to before me, a Notary Public, this 13 day of AUGUST A.D., 1973.

Robert L. Peters
Notary Public SCOTT County, Minnesota
My Commission Expires MARCH 16, 1977

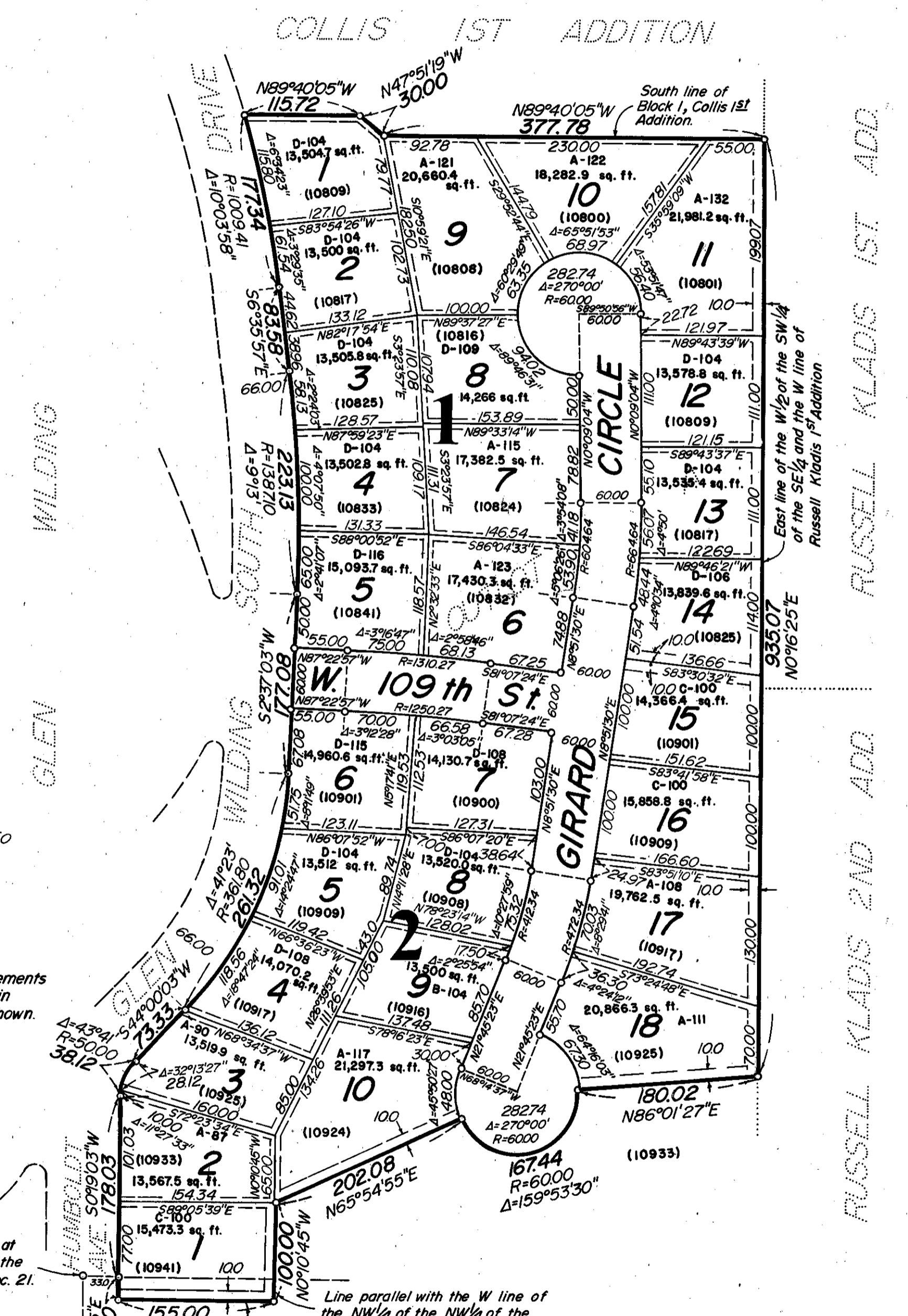
This plat of COLLIS 2ND ADDITION was approved and accepted by the City Council of Bloomington, Minnesota at a regular meeting thereof held this ___ day of ___ A.D., 1973.

CITY COUNCIL OF BLOOMINGTON, MINNESOTA

by _____ Mayor by _____ Manager

Pursuant to Chapter 810, Minnesota Laws of 1969, this plat has been approved this ___ day of ___ A.D., 1973.

by: Elmer J. Peterson
Hennepin County Surveyor



Drainage and Utility Easements shown thus being 5 feet in width unless otherwise shown.

Hennepin County Monument at the SW corner of the W 1/2 of the SW 1/4 of the SE 1/4 of Sec. 21.



MINNESOTA RIVER ADDITION

Bearings are assumed
o Denotes iron monument
Marked R.L.S. 9293
July 1973

