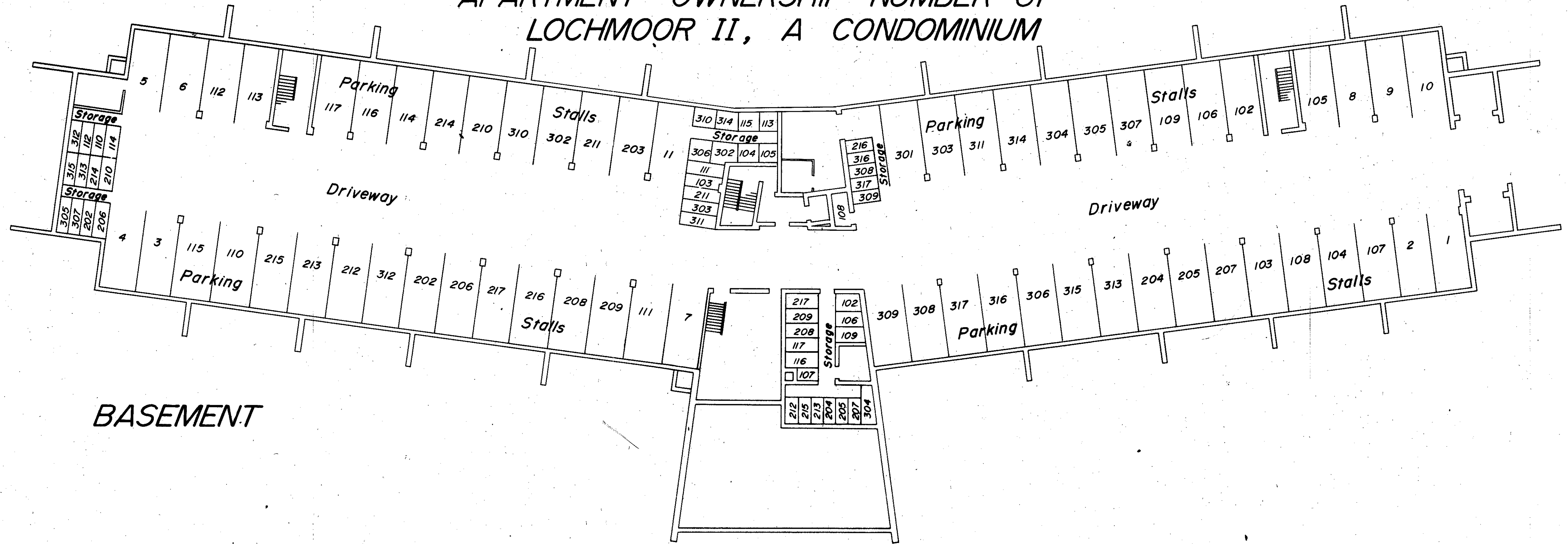


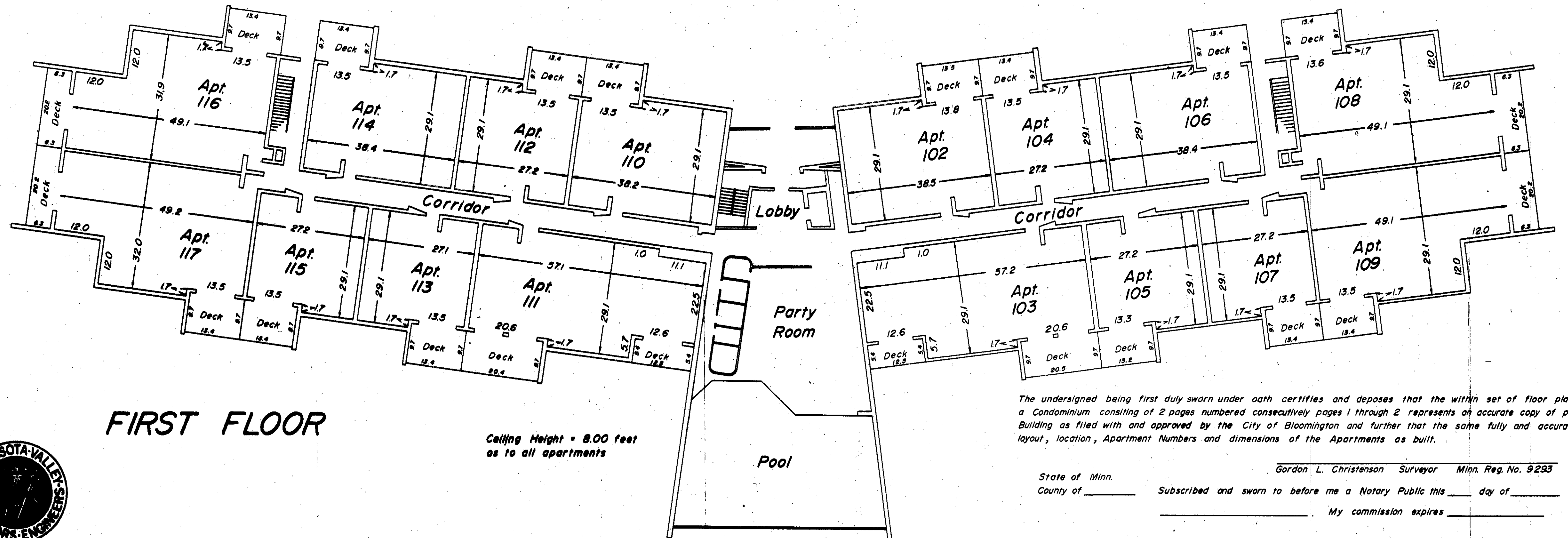
APARTMENT OWNERSHIP NUMBER 61
LOCHMOOR II, A CONDOMINIUM



BASEMENT

Ceiling Height = 9.20 feet

Scale 1 inch = 16 feet



FIRST FLOOR

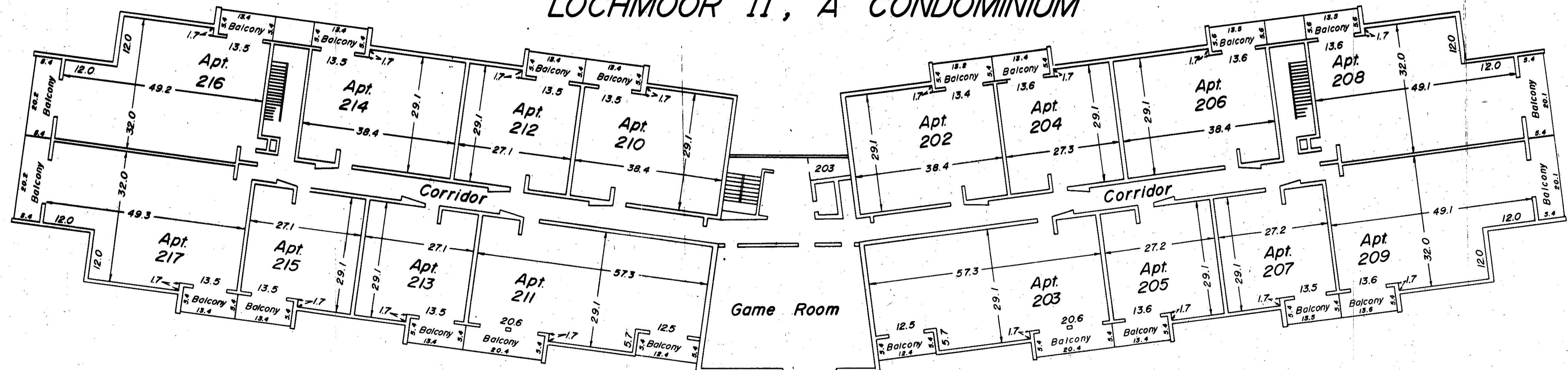
Ceiling Height = 8.00 feet
as to all apartments

The undersigned being first duly sworn under oath certifies and deposes that the within set of floor plans of Lochmoor II, a Condominium consisting of 2 pages numbered consecutively pages 1 through 2 represents an accurate copy of portions of the Building as filed with and approved by the City of Bloomington and further that the same fully and accurately depicts the layout, location, Apartment Numbers and dimensions of the Apartments as built.



State of Minn. _____
County of _____
Gordon L. Christenson Surveyor Minn. Reg. No. 9293
Subscribed and sworn to before me a Notary Public this _____ day of _____ 1975
My commission expires _____

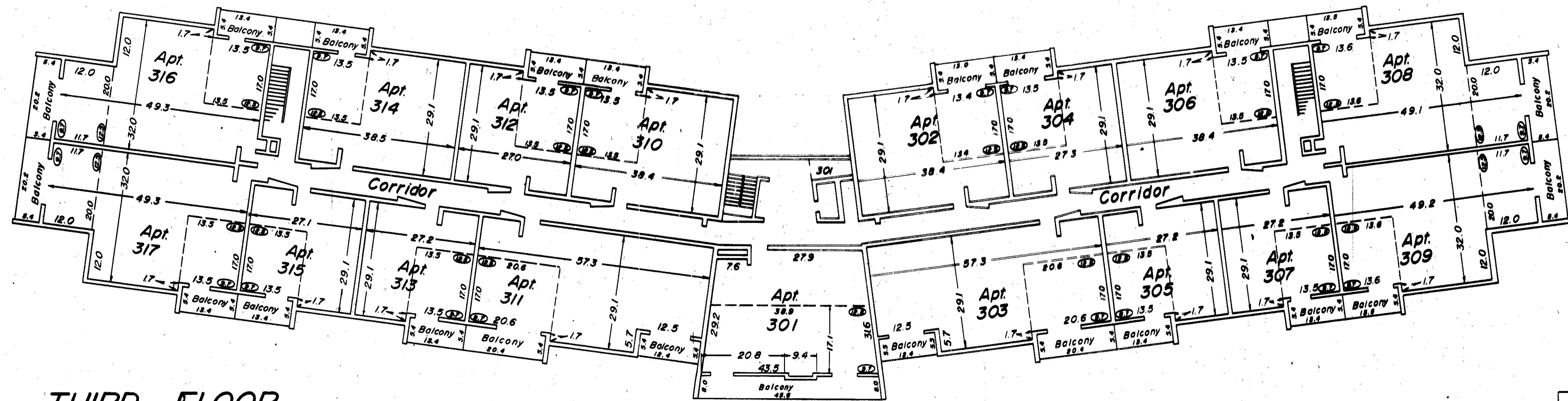
APARTMENT OWNERSHIP NUMBER 61 LOCHMOOR II, A CONDOMINIUM



Ceiling Height = 8.00 feet as to all apartments

SECOND FLOOR

Scale 1 inch = 16 feet



Ceiling Height = 8.00 feet as to all apartments
except vaulted areas. See detail

THIRD FLOOR

Dashed line denotes area where ceiling is vaulted
⊙ Denotes ceiling height

