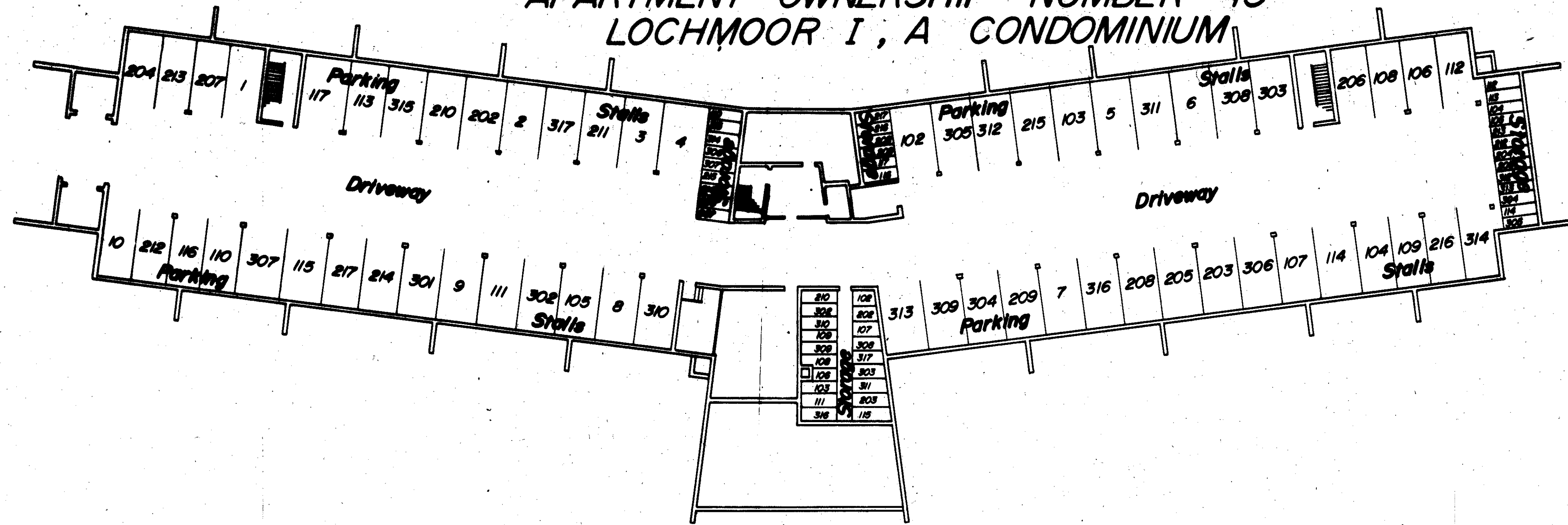


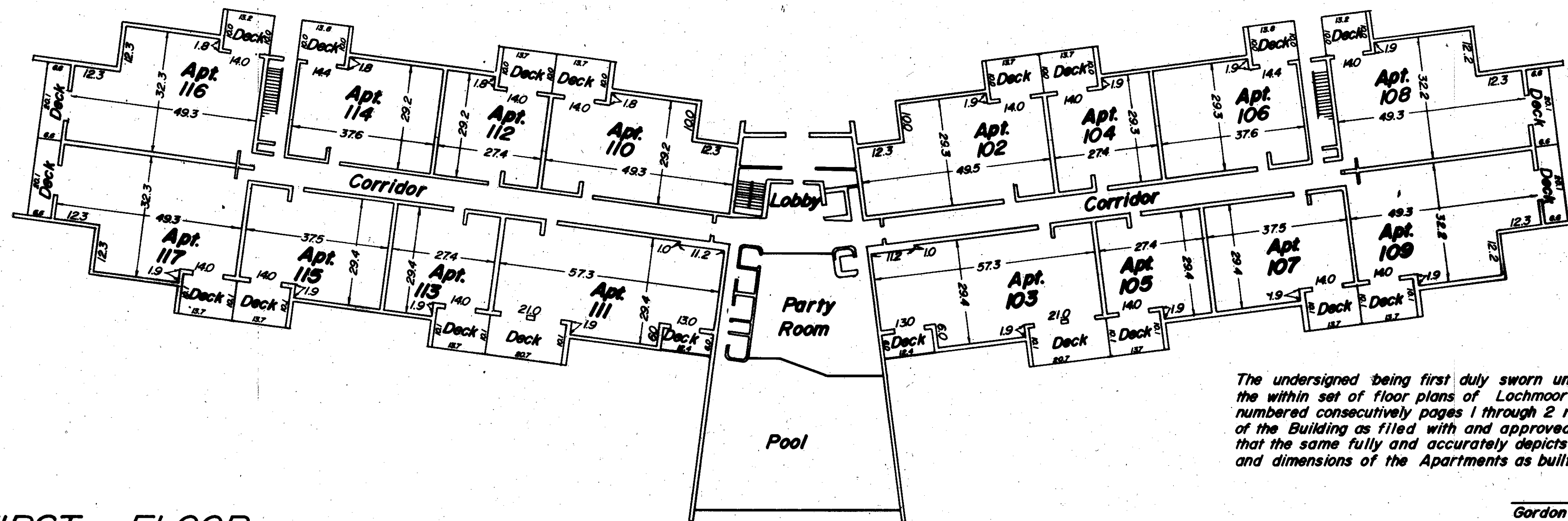
APARTMENT OWNERSHIP NUMBER 45  
LOCHMOOR I, A CONDOMINIUM



Ceiling Height +9.15

BASEMENT

Scale 1 Inch = 20 feet



Ceiling Height = 7.95 feet as to all apartments

FIRST FLOOR

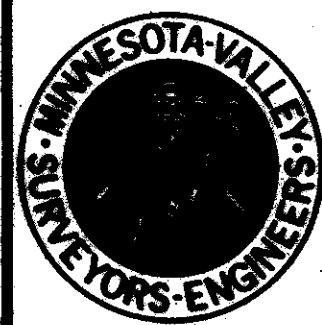
The undersigned being first duly sworn under oath certifies and deposes that the within set of floor plans of Lochmoor I, a Condominium consisting of 2 pages numbered consecutively pages 1 through 2 represents an accurate copy of portions of the Building as filed with and approved by the City of Bloomington, and further that the same fully and accurately depicts the layout, location, Apartment Numbers and dimensions of the Apartments as built.

Gordon L. Christenson Surveyor Minn. Reg. No. 9293

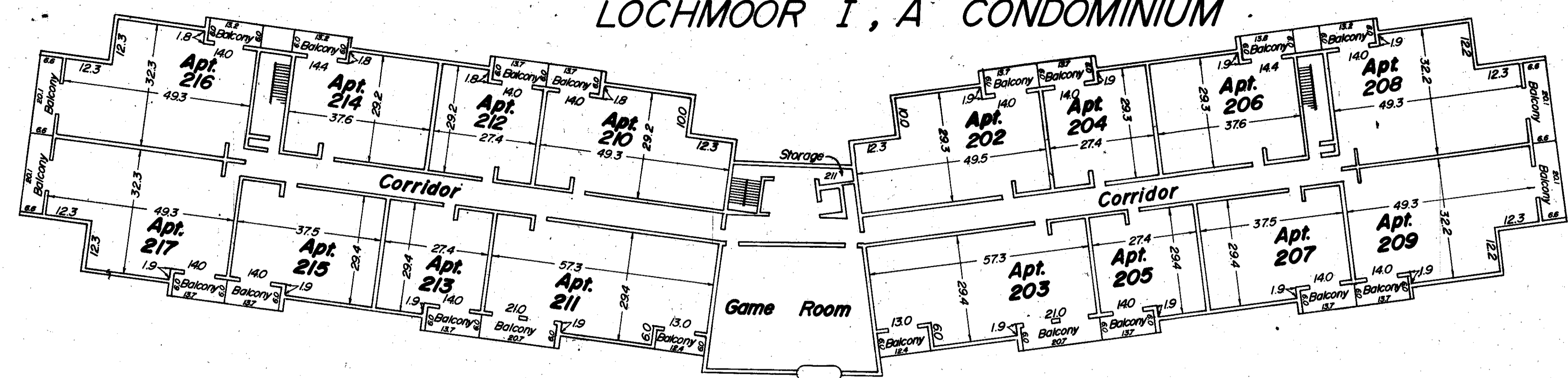
State of Minn.  
County of \_\_\_\_\_

Subscribed and sworn to before me a Notary Public this \_\_\_\_\_ day of \_\_\_\_\_ 1974 A.D.

My commission expires \_\_\_\_\_



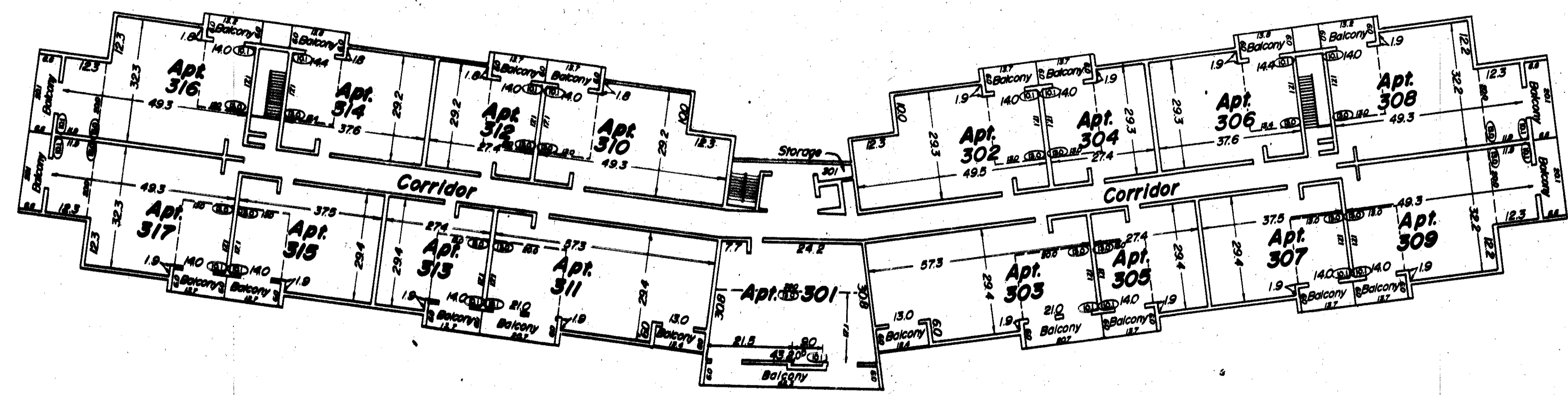
APARTMENT OWNERSHIP NUMBER 45  
LOCHMOOR I, A CONDOMINIUM



Ceiling Height = 7.95 feet as to all apartments

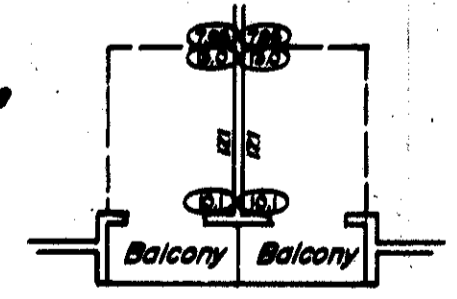
SECOND FLOOR

Scale 1 inch = 20 feet



Ceiling Height = 7.95 feet as to all apartments  
except vaulted areas. See detail.

Dashed line denotes area where  
ceiling is vaulted  
⊕ Denotes ceiling height



THIRD FLOOR