

NINE MILE WEST 4TH ADDITION

C.R. DOC. NO.

KNOW ALL PERSONS BY THESE PRESENTS: That Bloomington Ever MF, LLC, a Delaware limited liability company, fee owner of the following described property:

Lot 1, Block 1, NINE MILE WEST 2ND ADDITION

Has caused the same to be surveyed and platted as **NINE MILE WEST 4TH ADDITION** and do hereby dedicate to the public for public use the drainage and utility easements as created by this plat.

In witness whereof said Bloomington Ever MF, LLC, a Delaware limited liability company, has caused these presents to be signed by its proper officers this 23 day of August, 2024

Bloomington Ever MF, LLC, a Delaware limited liability company

By: **Enclave Manager, LLC, a North Dakota limited liability company**
Its: Manager

By [Signature]
Austin J. Morris, Manager

STATE OF Minnesota ~~North Dakota~~

COUNTY OF St. Louis ~~St. Louis~~
This instrument was acknowledged before me this 23 day of August, 2024, by Austin J. Morris, Manager of Enclave Manager, LLC, a North Dakota limited liability company, Manager of Bloomington Ever MF, LLC, a Delaware limited liability company, on behalf of the company.

[Signature] Lisa Island
(Signature) (Name Printed)

Notary Public CASE County, State of North Dakota
My Commission Expires 11-18-2027

I, Chris Ambourn do hereby certify that this plat was prepared by me or under my direct supervision; that i am a duly Licensed Land Surveyor in the State of Minnesota; that this plat is a correct representation of the boundary survey; that all mathematical data and labels are correctly designated on this plat; that all monuments depicted on this plat have been, or will be correctly set within one year; that all water boundaries and wet lands, as defined in Minnesota Statutes, Section 505.01, Subd. 3, as of the date of this certificate are shown and labeled on this plat; and all public ways are shown and labeled on this plat.

Dated this 19th day of AUGUST, 2024.

[Signature]
Chris Ambourn, Land Surveyor
Minnesota License No. 43055

STATE OF MINNESOTA
COUNTY OF Hennepin

This instrument was acknowledged before me on this 19th day of August, 2024, by Chris Ambourn.

[Signature] Wandy L. ...
(Signature) (Name Printed)

Notary Public Hennepin County, Minnesota
My Commission Expires 1-31-2027

CITY COUNCIL, CITY OF BLOOMINGTON, MINNESOTA

This plat of **NINE MILE WEST 4TH ADDITION** was approved and accepted by the City Council of the City of Bloomington Minnesota, at a regular meeting thereof held this 15th day of April, 2024 and said plat is in compliance with the provisions of Minnesota Statutes, Section 505.03, Subdivision 2.

CITY COUNCIL, CITY OF BLOOMINGTON, MINNESOTA

By [Signature] [Signature]
Mayor City Manager

COUNTY AUDITOR, Hennepin County, Minnesota

I hereby certify that taxes payable in 20___ and prior years have been paid for land described on this plat, dated this ___ day of ___, 20___.

Daniel Rogan, County Auditor By ___
Deputy

SURVEY DIVISION, Hennepin County, Minnesota

Pursuant to Minnesota. STAT. Sec. 383B.565 (1969) this plat has been approved this ___ day of ___, 20___.

Chris F. Mavis, County Surveyor By _____

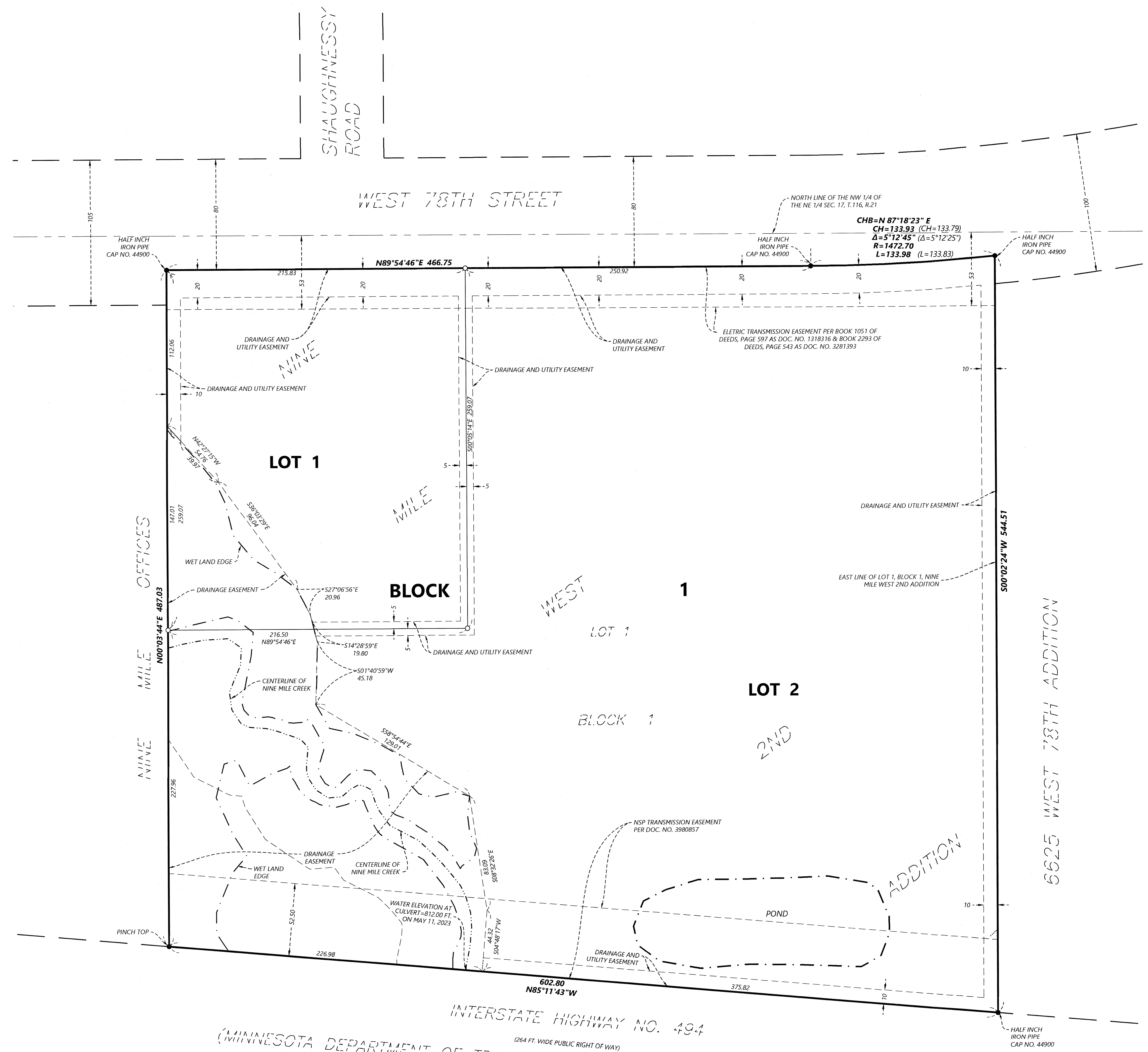
COUNTY RECORDER, Hennepin County, Minnesota

I hereby certify that the within plat of **NINE MILE WEST 4TH ADDITION** recorded in this office this ___ day of ___, 20___, at ___ o'clock __.M.

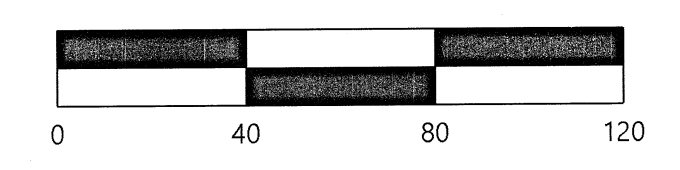
Amber Bougie, County Recorder By _____
Deputy

NINE MILE WEST 4TH ADDITION

C.R. DOC. NO.



SCALE IN FEET



The East line of LOT 1, BLOCK 1,
 NINE MILE WEST 2ND ADDITION is assumed to bear S 00°02'24" W.

- SET 1/2 INCH BY 14 INCH IRON PIPE MONUMENT WITH CAP 43055
- FOUND MONUMENT AS NOTED ON SURVEY
- (XX.XX) DENOTES PLAT DISTANCE
- (XX°XX'XX") DENOTES PLAT BEARING
- (---) DENOTES WET LAND EDGE

Elevations and ground contours shown hereon are relative to the NAVD88 vertical datum and are relative to MnDot Benchmark 2785 BM which has an elevation of 863.23 ft.