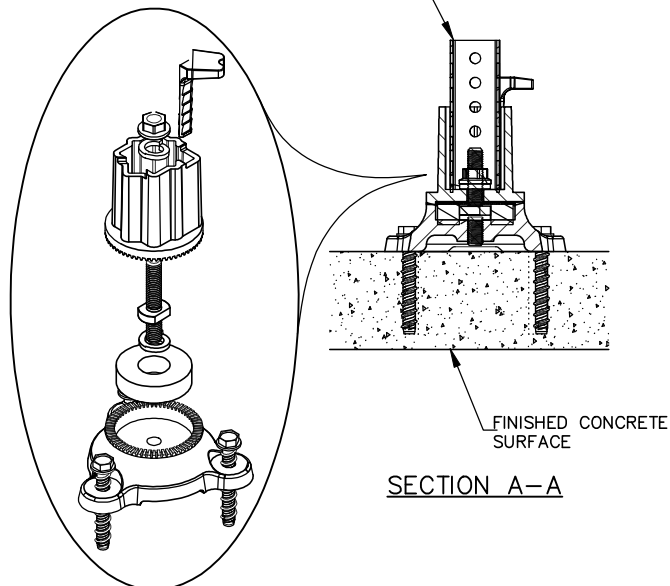


1 3/4" x 1 3/4" (O.D.) x 12"
 GALVANIZED TUBING WITH 7/16" DIA.
 HOLES 1" ON CENTER, ON ALL 4 SIDES
 WALL THICKNESS GAUGE #12 (.105 in.)
 INSERTED AT TIME OF SIGN INSTALLATION.



BREAK AWAY UNIT

NOTES:

1. ALL TRAFFIC CONTROL DEVICES, INSTALLATION AND SIGNING SHALL CONFORM TO THE LATEST VERSION OF THE MINNESOTA MANUAL ON UNIFORM TRAFFIC CONTROL DEVICES (MMUTCD).
2. ALL PRODUCTS SHALL CONFORM WITH THE LATEST MnDOT APPROVED PRODUCTS LIST
3. NO SUBSTITUTIONS MAY BE MADE ITEMS SHOWN IN THIS DETAIL WITHOUT THE EXPRESS AUTHORIZATION OF THE PROJECT ENGINEER

BREAK AWAY MOUNTING UNIT NOTES:

1. GENERAL REQUIREMENTS:
 - 1.1. SURFACE MOUNTED UNIT SHALL BE ATTACHED WITH NO LESS THAN 3 TITAN HD ANCHORS WITH A MINIMUM DIAMETER OF 1/2" AND A MINIMUM LENGTH OF 4". THE MINIMUM EMBEDDED DEPTH SHALL BE 3-3/8". THE ALLOWABLE TENSION LOAD SHALL BE 2270lbs WHEN INSTALLED IN NORMAL WEIGHT, 3000psi CONCRETE.
 - 1.2. UNITS SHALL BE INSTALLED PLUMB (SURFACE UNITS CAN BE SHIMMED TO A MAXIMUM HEIGHT OF 1/2").
 - 1.3. UNIT SHALL ALLOW FOR 360° INDEXING TO ALLOW FOR PROPER SIGN ORIENTATION AFTER INSTALLATION.
 - 1.4. UNIT SHALL HAVE A STUB HEIGHT OF 4" MAXIMUM AFTER BREAK AWAY.
 - 1.5. UNIT SHALL UTILIZE A SHEAR BOLT AS ITS' MEANS OF BREAKING AWAY.
 - 1.6. UNIT SHALL UTILIZE A LOCKING WEDGE OR SHIM TO ELIMINATE ALL TOLERANCE BETWEEN MOUNTING UNIT AND TELESPAR POST
 - 1.7. UNIT SHALL CONFORM WITH THE MnDOT APPROVED PRODUCTS LIST
2. UNIT SHALL BE INSTALLED PER THE MANUFACTURERS SPECIFICATIONS

700 - SIGN (CONC. MOUNTED)

700 - SIGN (CONC. MOUNTED).DWG 3/2018

PAYMENT: FURNISH AND INSTALLATION OF BREAK AWAY UNIT IS CONSIDERED INCIDENTAL TO "INSTALL SIGN" OR "SIGN PANEL TYPE C"; NO DIRECT PAYMENT THEREOF WILL BE MADE.

H:\Cad_Comm\Details Updated\0 - 700 - TRAFFIC complete\700 - Sign (Conc. Mounted)

CITY OF BLOOMINGTON MINNESOTA
 1700 W 98TH ST.
 BLOOMINGTON MN 55431
 PHONE (952) 563-8700

**ENGINEERING DIVISION
 PUBLIC WORKS DEPARTMENT**

PLATE NAME: 700 - Sign (Conc. Mounted)	
LAST REVISED: 3/27/2018	
LAST REVISED BY: KBO	